


## [Contents List]

Year	MODEL (SHOP: ●, ETM: ○, DTC: ■, None: X)											
	SA	JB	LD	ED	MG	UN	KM	BL	HM	VQ	GH	PU
09MY			●○■				●○■		●○■	●○■		
08MY	●○■	●○■	●○■	●○■	●○■	●○■	●○■	●○■		●○■	●○■	●○■
07MY	●○■	●○■	●○■	●○■	●○■	●○■	●○■	●○■		●○■	●○■	●○X
06MY	●○■	●○■	●○■	●○■	●○■		●○■	●○■		●○■	●○■	●○X
05MY	●○■	●○■	●○■				●○■	●○■			●○■	●○X
04MY	●○■		●○■								●○■	
03MY												

Year	MODEL (Body Repair : ■, None: X)											
	SA	JB	LD	ED	MG	UN	KM	BL	HM	VQ	GH	PU
ALL	■	■	■	■	■	■	■	■	■	■	■	X

Type	Model (Overhaul Manual - Transaxle)											
	SA	JB	LD	ED	MG	UN	KM	BL	HM	VQ	GH	PU
M/T	M5CF1	M5CF1	M5CF1	M5CF1	M5GF2	M6GF2	M6GF2			M5HF2		
		M5CF2	M5CF2	M5CF2	M6GF2							
A/T	A4CF0		M5CF3	M6GF2								
			A4CF1	A4CF1	A5GF1			A5SR2		A5HF1	A5HF1	
			A4CF2	A4CF2								

## [How to install]

1. Insert [GSW CONTENTS VIEWER CD/DVD](#) in your CD/DVD drive.
2. My computer --> CD/DVD drive and then select 'Explore' Run the **setup.exe** file in CD/DVD root drectory.
3. Program installation needs 1~5 minutes. And if installation is completed, the  icon will be shown in your desktop.

※ This program is needed the Microsoft.NET Framework 2.0.

The Microsoft.NET Framework 2.0 will be installed automatically during setup process.

※ The SVG Viewer, which provide the zoom in/out function and hyperlink function, will be **installed** automatically during setup process.

※ 'Body Repair' when it sees and the Acrobat reader is necessary.


When it establishes the Acrobat reader, press here. ([English](#), [French](#), [German](#), [Spanish](#))

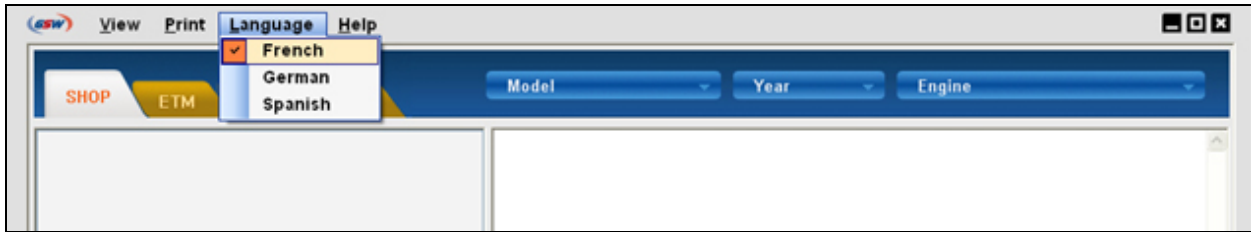
## [System requirements]

1. Operating system : MS Windows XP, VISTA
2. CPU : Pentium IV or higher.
3. Memory : 512MB RAM or faster recommended.
4. CD/DVD-ROM drive : 4X or faster recommended.
5. Browser : Internet Explorer 6.0 ( or IE 7.0)
6. Display resolution : 1,024 x 768 pixel ( or higher).

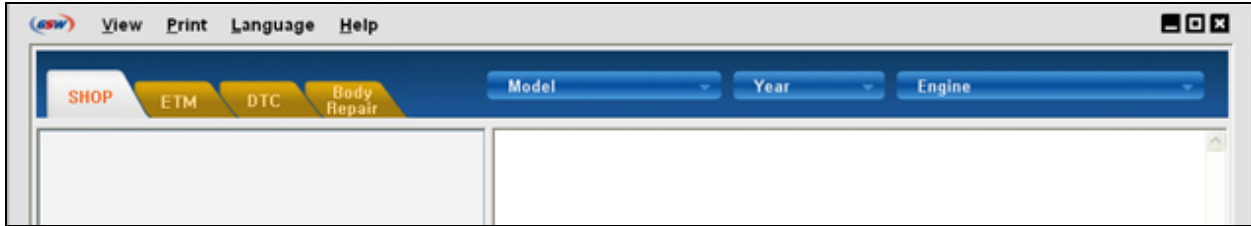
## [How to use the program]

**How to use the program:**

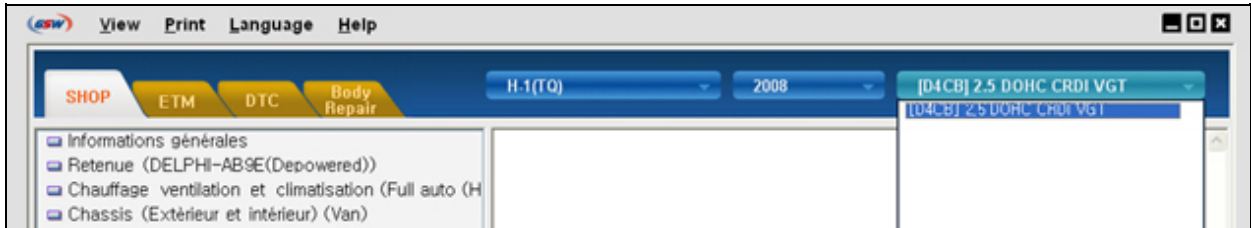
1. Insert the **shop manual** and **ETM CD/DVD** in your CD/DVD drive.
2. Double click the "  " icon in your desktop.
3. Select the 'Language' - 'English/French/German/Spanish' in the top menu.



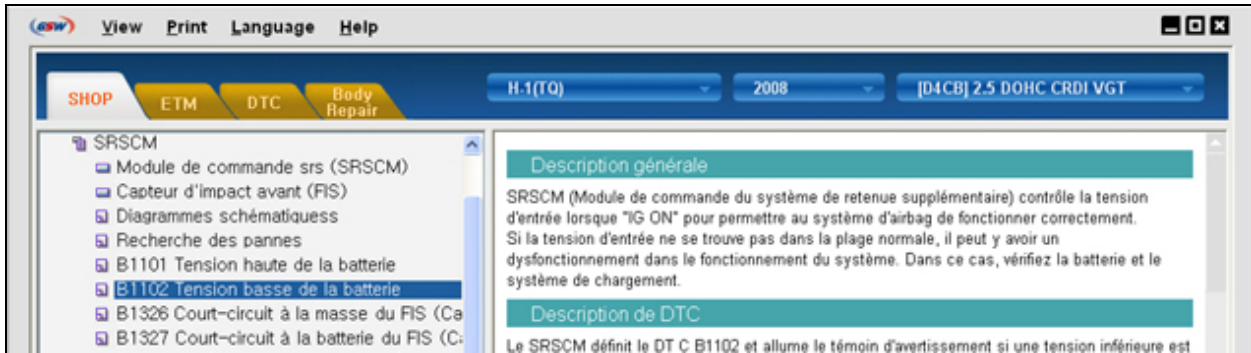
4. Select the 'SHOP' or 'ETM' or 'DTC' or 'Body Repair' menu which you want to know.



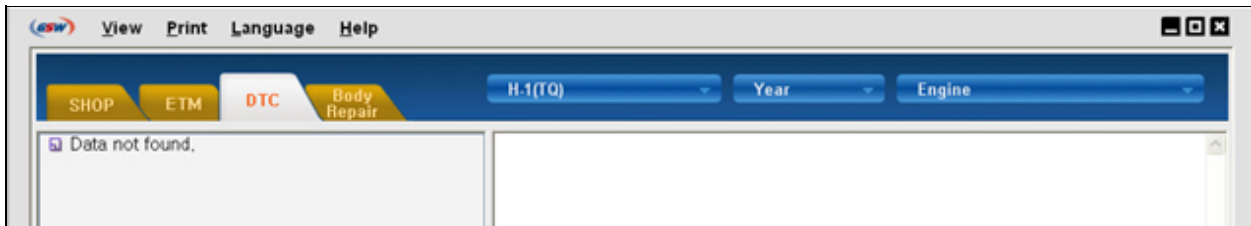
5. Select the 'Model', 'Year', 'Engine' then you can find a table of contents on the left side of monitor.



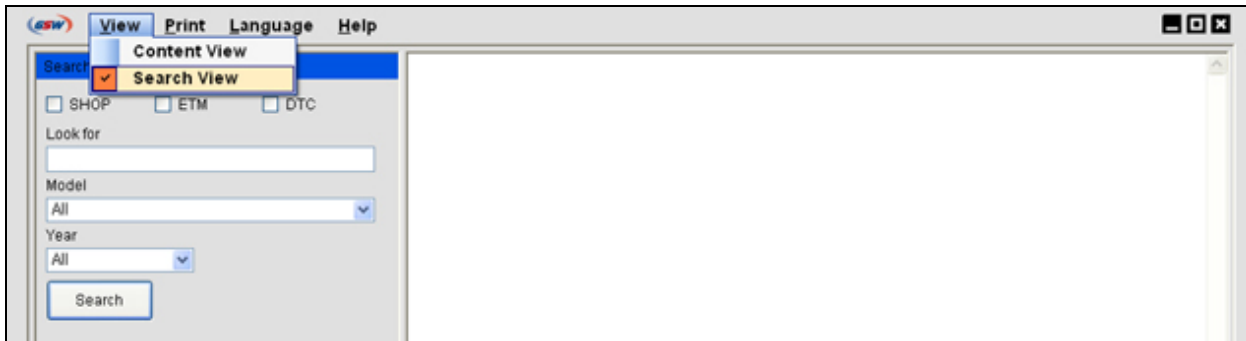
6. Click the table with mouse and then you can find the contents on right side of monitor.  
(One click: It is opened. One click: It is shut.)



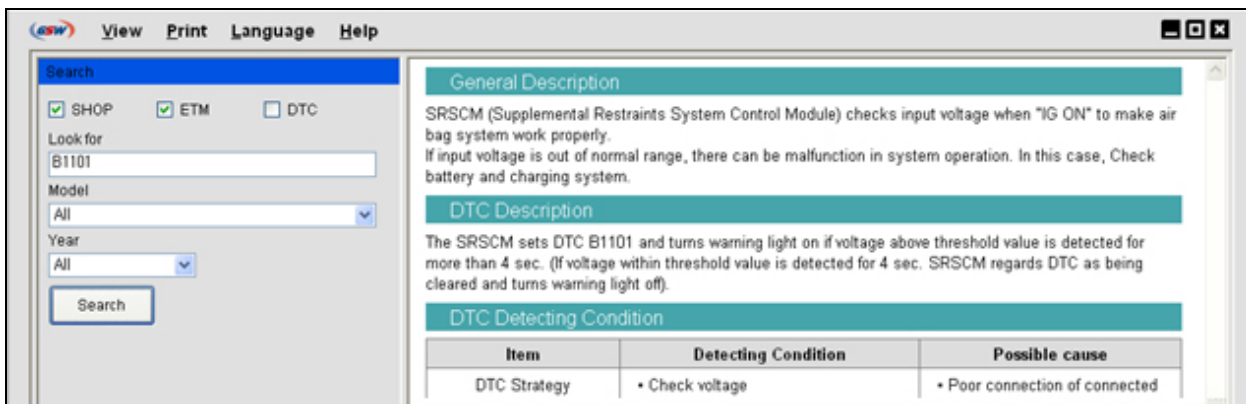
7. 'There is No Data.' is displayed when the contents is not exist.



8. How to search : Select the 'Content View', 'Search View' on the top menu.



Select the 'SHOP / ETM / DTC' and 'MODEL, YEAR' then click the 'SEARCH' after typing the "Look for ". Searching contents are displayed on the lower side of monitor and click it to see the detailed contents.



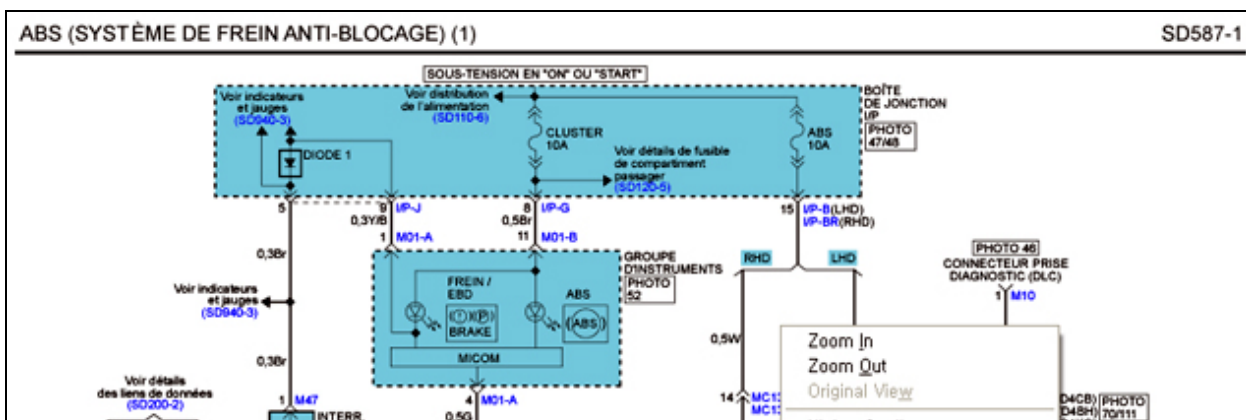
※ Detailed contents reading time might be delayed when opening the CD/DVD for the first time or leaving GSW Contents Viewer for a long time. In this case, please wait a moment(about 15 sec.), not to click another contents.

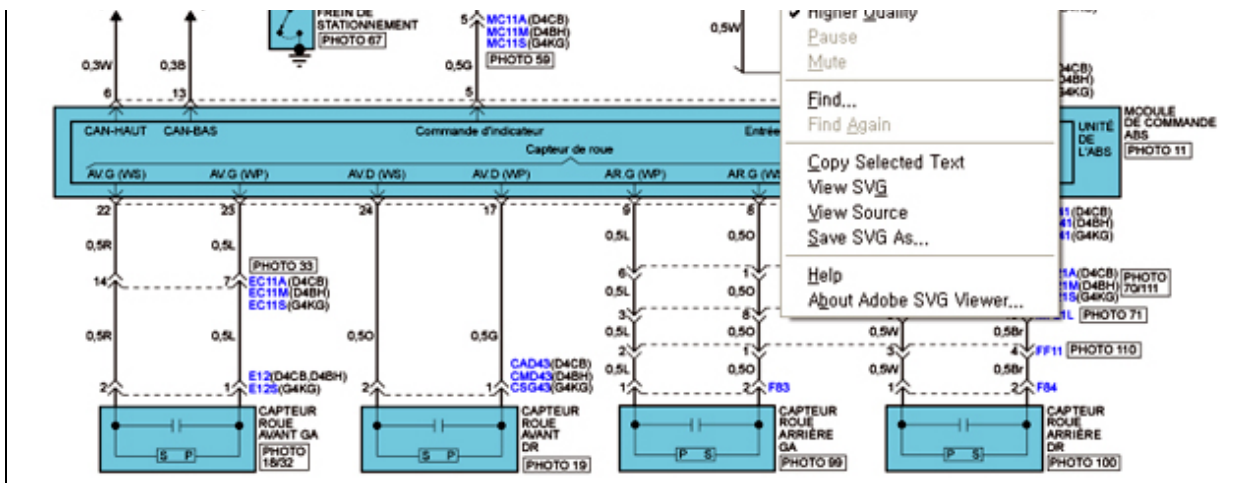
### [The way of using SVG image on the ETM]

ETM images consist of **SVG, SWF, JPG, GIF** image file format.

Especially, SVG image needs SVG Viewer program which will be installed automatically during setup process. SVG image is able to zoom in/out of view using the right mouse button and 'Find' function allow you to find text in the SVG image.

To see the 'Location' or 'Connector' or 'Harness' , click the **blue text** on the SVG image.





1. To zoom in of view, hold down the CTRL key and click the left mouse button.
  2. To zoom out of view, hold down the CTRL key, SHIFT key and click the left mouse button.
  3. To move the view, hold down the ALT key and left mouse button, and then drag the mouse point to where you want to see.
  4. To see the original view, click the right mouse button and select Original View.
- The end.

Close