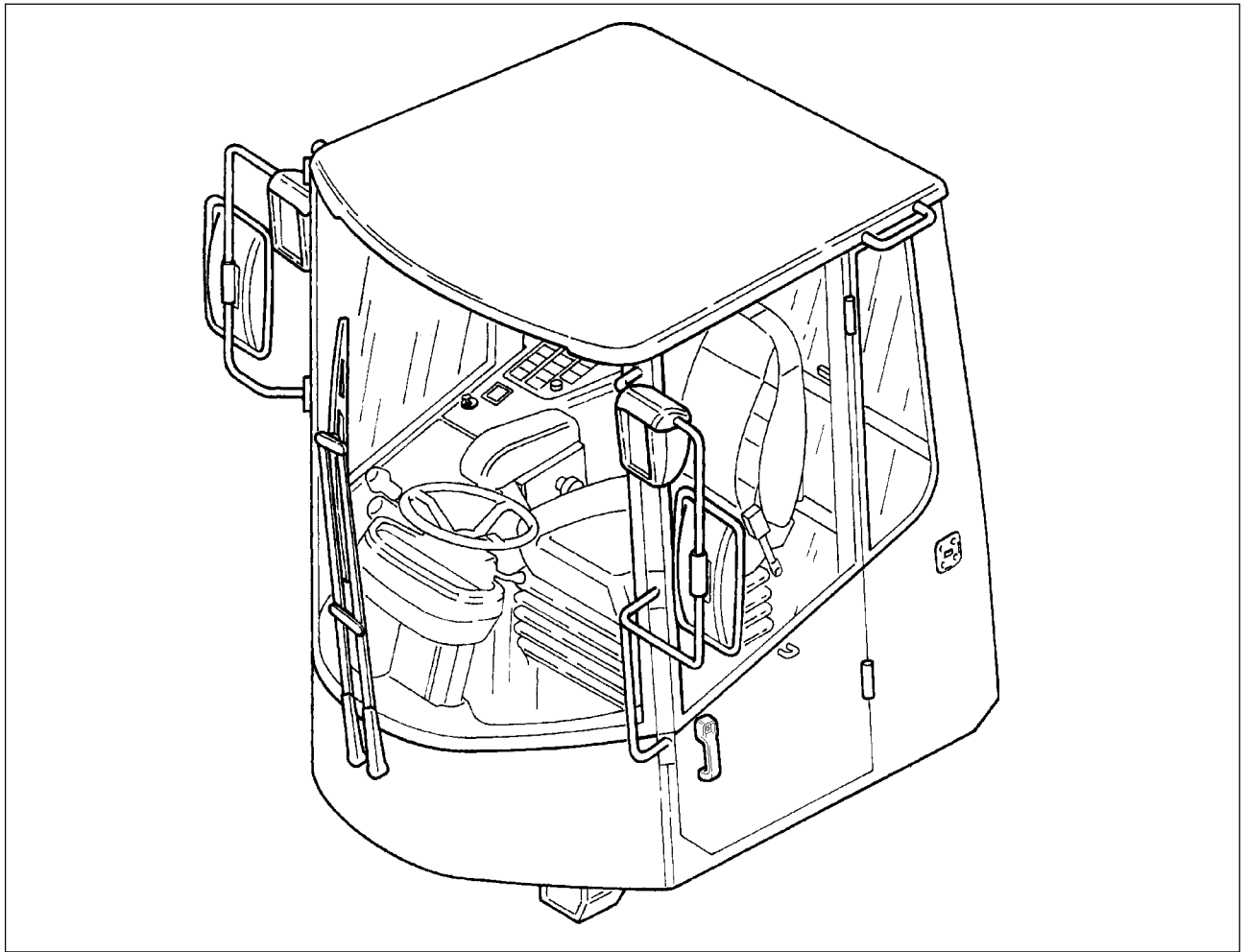


## 8.1 GENERAL DESCRIPTION



**Fig. 8-1**

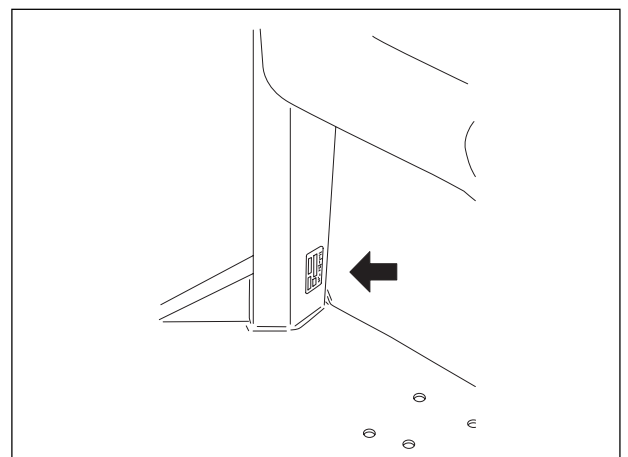
The cab is a tested protection structure against roll-over hazard (ROPS).

The cab is complete with the driver's seat, steering column, controls and instruments to drive and operate the machine.

Other standard features are the heating system, demister, front and rear windscreen washer-wipers, ceiling light, clock/thermometer, loud-speakers, safety glasses, rear-view mirrors, sun visor, and emergency exit.

Access inside the cab is through the left-hand door. The right-hand door is used to gain access to the heater/air conditioning system compartment. Doors can be locked wide open and are fitted with a key lock.

The main components such as the hydraulic reservoir, hydraulic pump and control valve, steering control valves and cylinders, and drive shafts can be removed or repaired without disassembling the cab.



**Fig. 8-2**

The cab serial number is etched on a plate located on the inner side of the cab left-hand post.

## 8.2 REPAIR

### 8.2.1 CAB (REMOVAL/INSTALLATION)

#### Removal

Park the machine on level ground and block wheels securely to prevent motion.

Disconnect the battery isolator switch.



#### WARNING

Always disconnect the battery isolator switch before cleaning, repairing, overhauling or parking the machine.

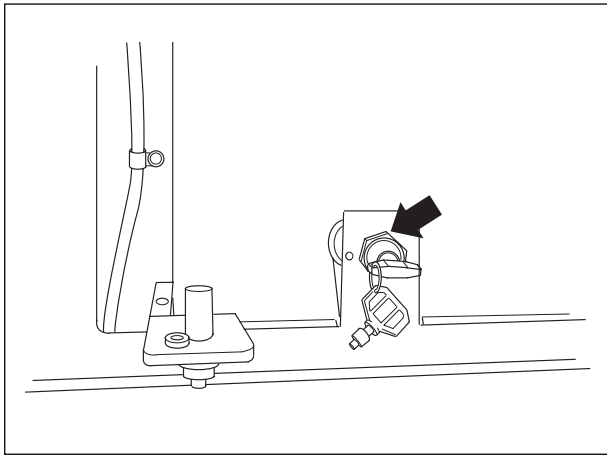


Fig. 8-3

Remove rear fenders (1) and steps (2).  
Remove protection panels (3) at the cab bottom, on both sides.  
Disconnect the cab to frame ground braid.

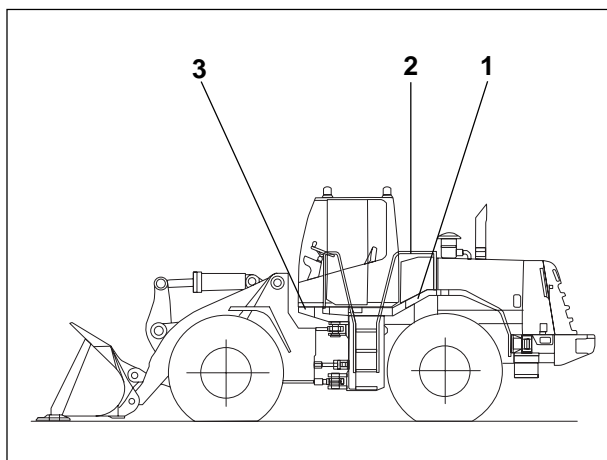


Fig. 8-4

Loosen the four safety screws and the four screws securing the cab to the frame.

Provide a suitable hoist above the cab and hook it to the lifting eyebolts (q.ty 4). These should have been screwed in at the cab top beforehand (cab weight: 700 kg approx.). Take out any slack in the lifting chains.



#### WARNING

Always use hoists or similar devices of suitable capacity to lift or move heavy components. Ensure that the sling is perfectly made.  
Use the lifting eyes.

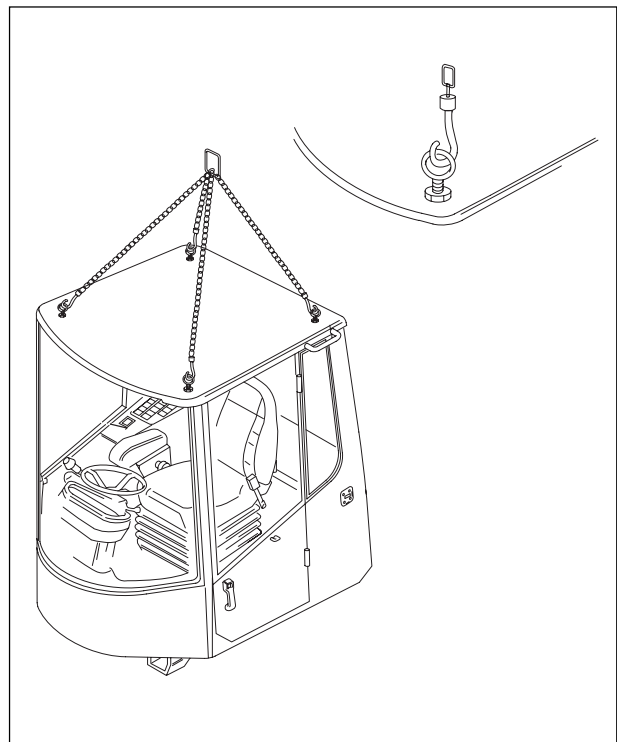


Fig. 8-5 Lifting cab

Slightly raise the cab taking care not to tension any electrical cables or hoses.

Lifting height should be such to allow detachment of all lines and cables from machine assemblies.

Disconnect the four connections **A-B-C-D** from the bottom of the cab, on the left side, loosening the Allen screws retaining the connection.

Disconnect the throttle pedal linkage, ball joint (**5**), link (**6**) from steering column (**10**). Loosen the screws securing the brake pedal valve and remove the pedal assembly, without disconnecting the pipes.

From the right side of the cab, open the panel and label the hoses of the equipment control levers (**3**) and three way valve (**4**). Disconnect the piping of the windshield washer from the reservoir, and disconnect the piping of the parking brake valve from the right side of the cab.

Close the heater feeding valves.

Disconnect the two heater hoses located in the rear right side of the cab.

Make sure that all connections on the machine are disconnected, then lift the cab, moving it sideways.

### Reinstallation

The installation is the reversal of the removal.

Tighten the cab screws to the frame to the specified torque.

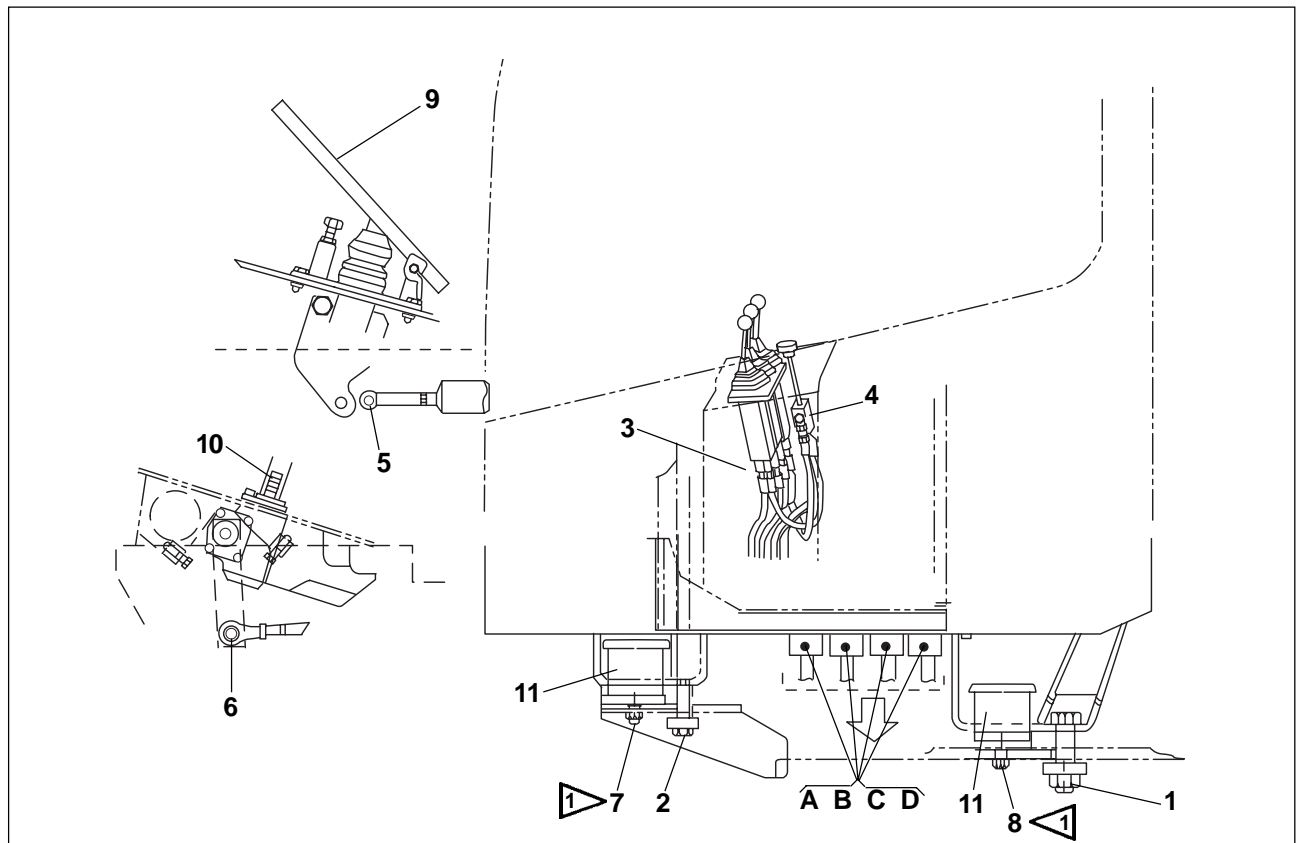



Fig. 8-6

Note -  Screw M16 - Tightening torque 230 Nm

1. Safety screw M30 - 2. Safety screw M24 - 3. Equipment control lever pipes - 4. Three-way valve pipes - 5. Throttle ball joint - 6. Steering lever ball joint - 7. Cab and frame front securing nut M16 - 8. Cab and frame rear securing nut M16 - 9. Throttle pedal - 10. Steering column - 11. Elastic pads.