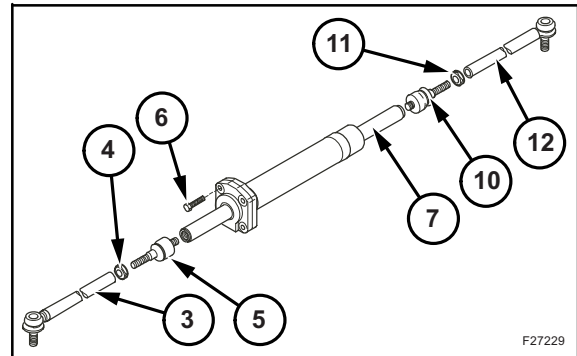




Remove the tie rods (3) and (12) by loosening the nuts (4) and (11) with a suitable wrench, then check the conditions.

Unscrew the fastening screws (6) and take the steering cylinder (7) out of its housing, if necessary use a rubber hammer.

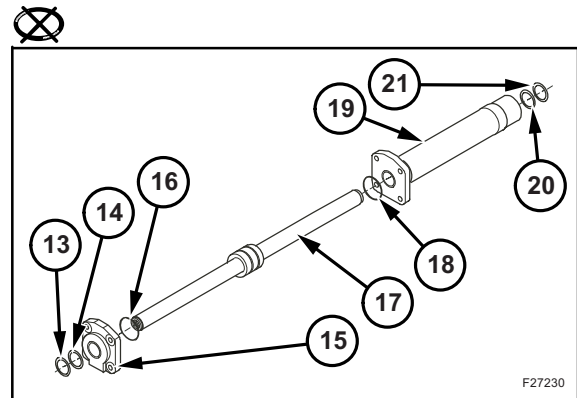
Remove only parts that need to be overhauled and/or replaced.



Remove the cylinder head (15) from the cylinder body (19) and remove it from the rod (17).

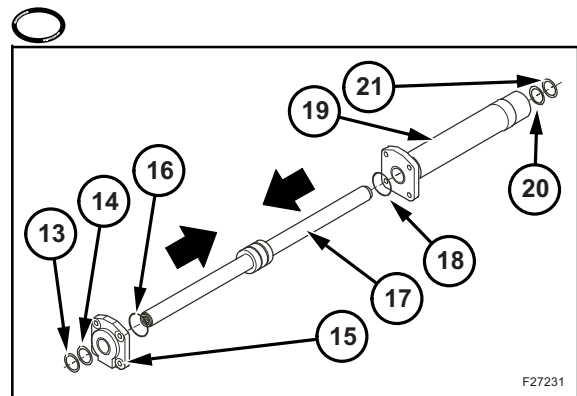
Remove the rod (17) from the cylinder body (19).

Remove all the seals and O-rings (13, 14, 16, 18, 20 and 21) from the cylinder body (19), the cylinder head (15), and the rod (17).

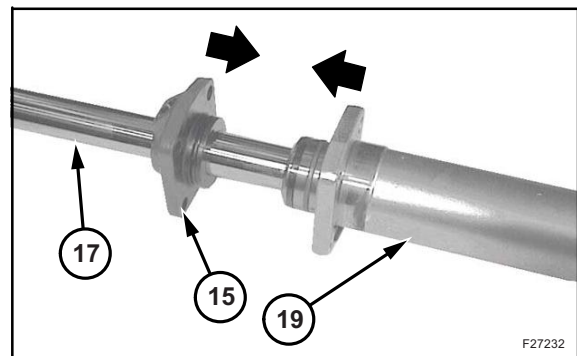


### Assembly

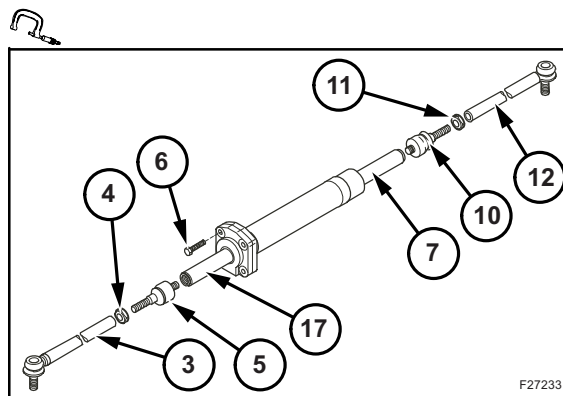
Assemble new seals and O-rings (13, 14, 16, 18, 20 and 21) on the cylinder head (15), on the rod piston (17) and on the cylinder body (19).



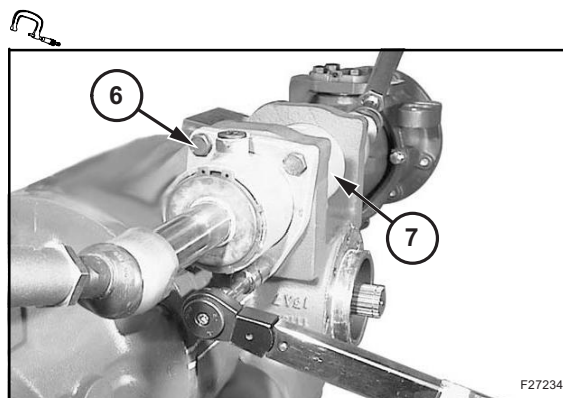
Assemble the cylinder head (15) on the rod (17). Slide the pre-assembled rod (17) into the cylinder body (19).



Assemble the tie rods (3) and (12), the ball joints (5) and (10), the nuts (4) and (11) to the ends of the rod (17), then tighten to the requested torque.



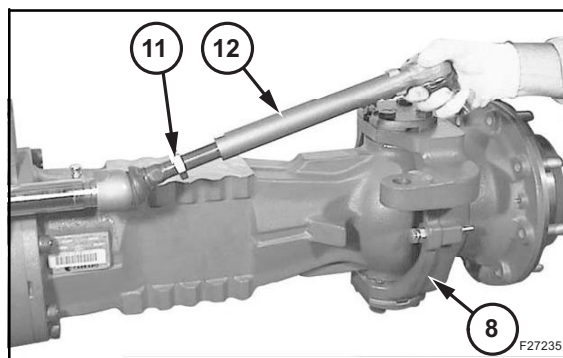
Install the steering cylinder (7) already assembled on the central body.  
Assemble and tighten the screws (6) to the requested torque.



Align the swivel housing (8) with the axle.  
Screw the tie rod (12) so that its ball joint can be inserted into the swivel housing (8).

**NOTE:** it is important to unscrew the locknut (11) to carry out this operation.

Repeat the whole sequence of the mentioned operations to the other side.



Assemble the ball joint of the tie rod (3) into its housing on the swivel housing (2).  
Assemble and tighten the locknut (1) to the requested torque.  
Repeat the whole sequence of the mentioned operations to the other side.

