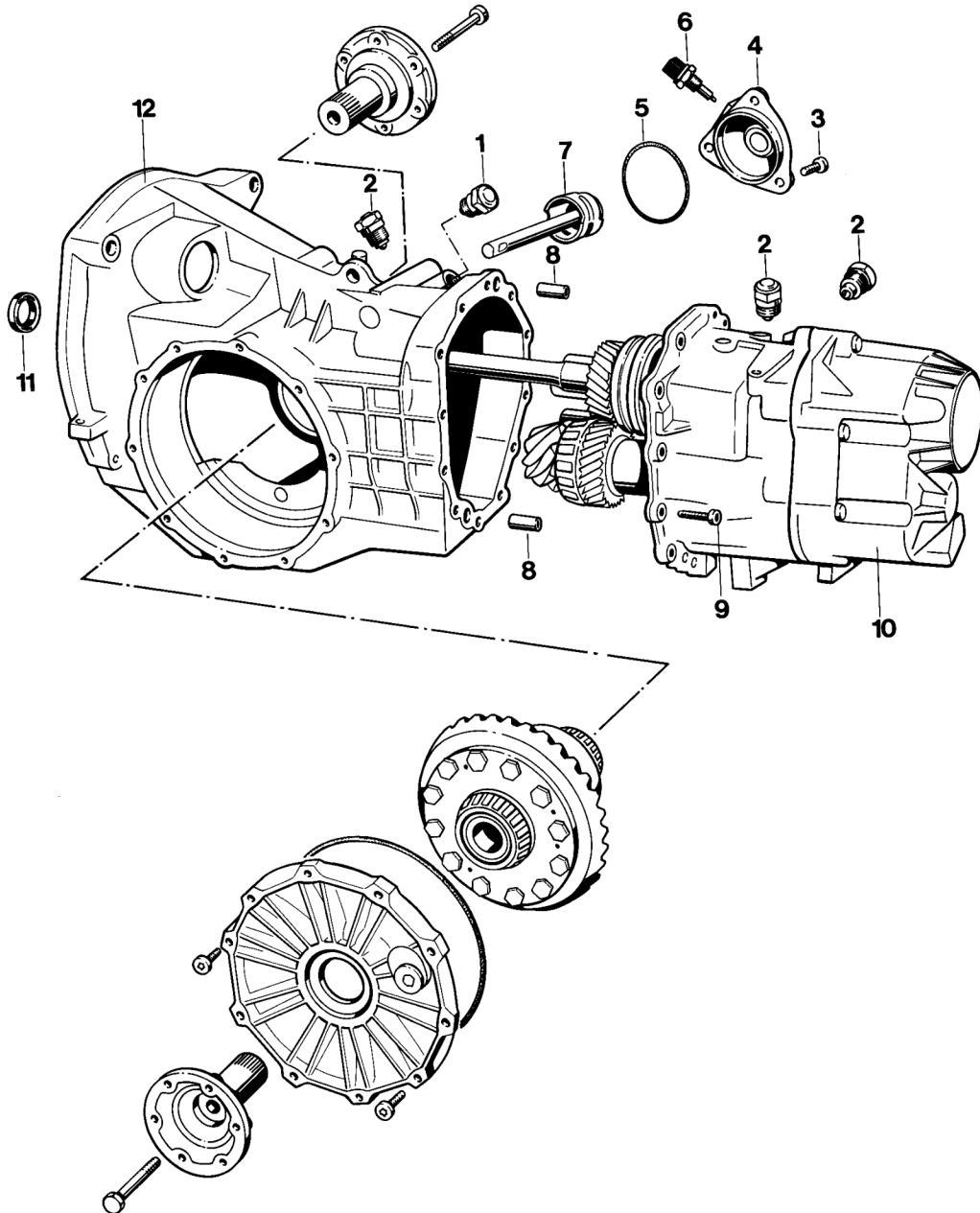


Removing and installing gear set



No.	Designation	Qty.	Note:	
			Removal	Installation
1	Shift catch (black)	1		Do not confuse with shift catch (No. 2) Tightening torque 70 Nm (52 ftlb)
2	Shift catch (light)	3		Do not confuse with shift catch (No. 1) Tightening torque 70 Nm (52 ftlb)
3	Bolt M 8 x 22	3		Insert with Loctite 573 and tighten to 25 Nm (18 ftlb)
4	Cover	1		
5	Sealing ring	1		Replace
6	Reverse light switch	1		Tighten to 20 Nm (15 ftlb)
7	Selector shaft with shift cylinder	1		
8	Adapter sleeves	2	Use Special Tool 9532 to drive out	
9	Bolt M 8 x 36	12		Tighten to 25 Nm (18 ftlb)
10	Full gear set	1		
11	Shaft seal	1	May be replaced without dismantling the transmission (refer to page 34 - 7)	Replace, fit only after gear set has been installed as it may otherwise be damaged. Pack space between sealing lip and dust lip with multi-purpose grease
12	Transmission housing			

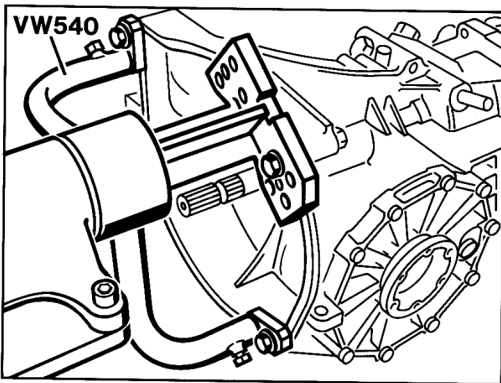
Removal and installation notes

Removal

Note

When working on the gear set, it is not necessary to remove the differential.

1. Clamp transmission with Special Tool VW 540 into assembly stand and drain transmission oil.



1152-34

Installation

Note

To avoid damaging the seal, install drive shaft seal only after the gear set has been installed.

1. Coat end shield/transmission housing sealing surface with sealant (Loctite 573) and place full gear set carefully into transmission housing.
2. Drive adapter sleeves into position and tighten mounting screws to 25 Nm (18 ftlb)
3. Fit seal for drive shaft (refer to page 34 - 7).