

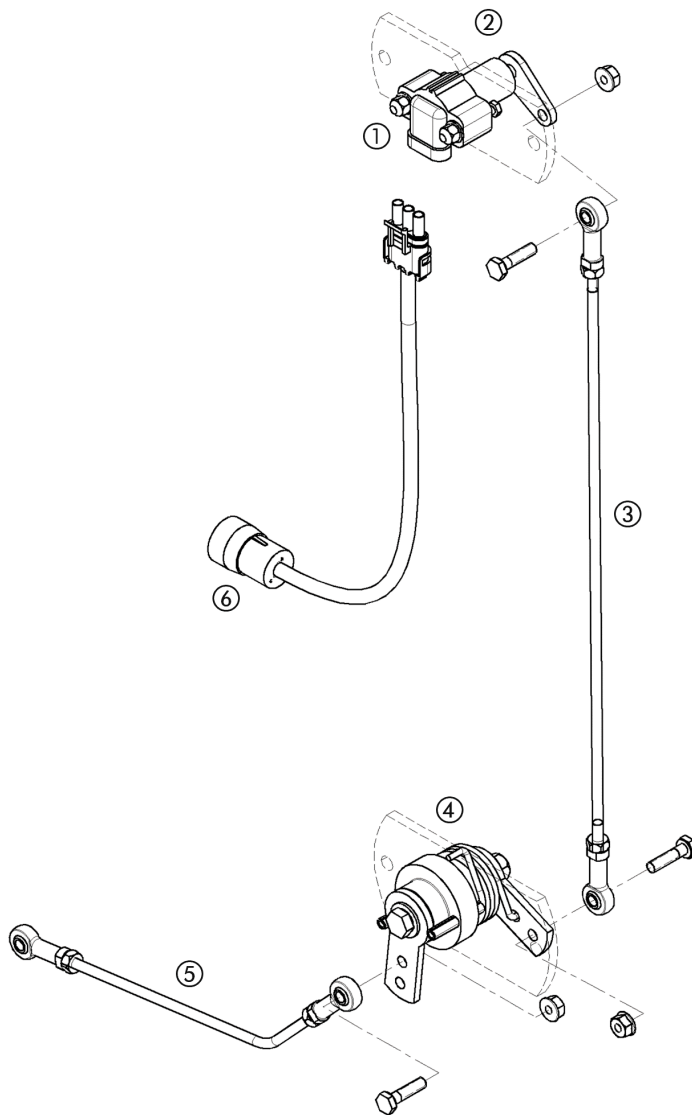
1020 FLEXIBLE CUTTER BAR HEADER

Linkage Sensing


The following illustration shows the correct adjustment and orientation of the linkage type height control components. Periodically check the height control system for correct adjustment and service as needed. This will ensure good performance of the height control system.

Include in the checks:

1. Sensor tube and feeler adjustment, see previous pages
2. Header height indicator adjustment, see previous pages
3. Header potentiometer adjustment



1.	Potentiometer
2.	Upper Pivot Support
3.	Upper Rod; Length Center Of Ball Socket to Ball Socket: 455 mm (17.9")
4.	Lower Pivot Support
5.	Lower Rod; Length Using A Straight Line Center Of Ball Socket to Ball Socket: 264 mm (10.4")
6.	Extension Harness

 **REMEMBER:** the rods should be centered between the ball sockets; the same amount of threads showing on each end of the rod.

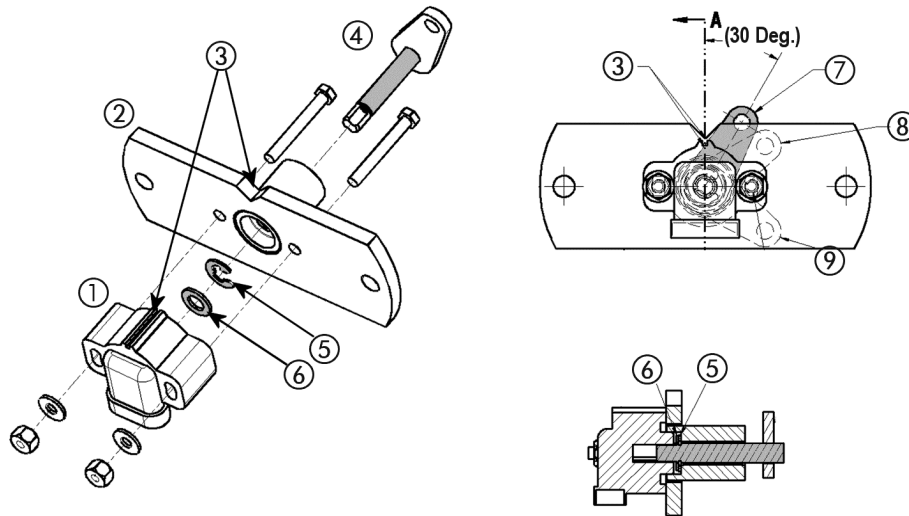
Refer to installation instructions RAC6-12240 for addition information.

M173301

1020 FLEXIBLE CUTTER BAR HEADER

Linkage Sensing

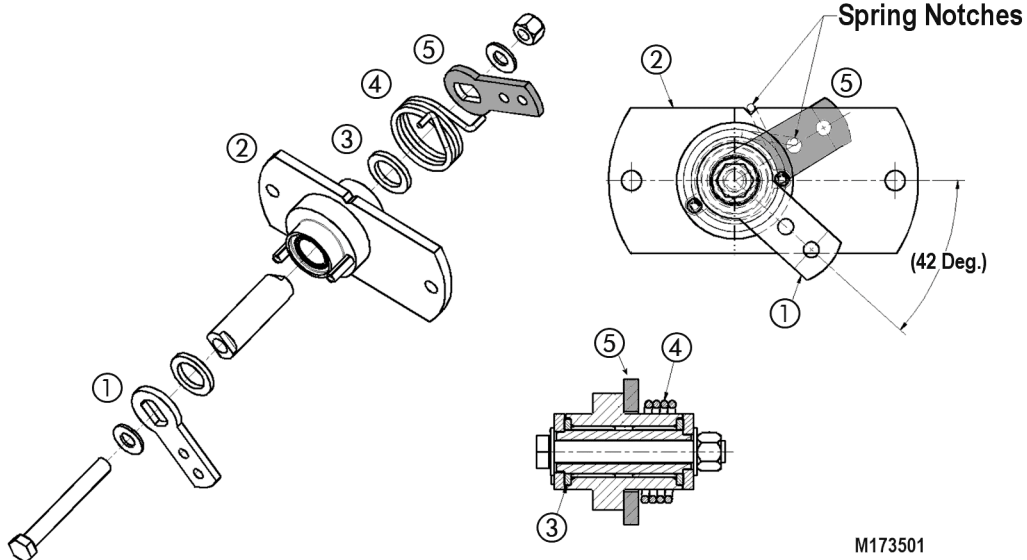
Potentiometer Mounting



M173401

1.	Potentiometer	4.	Pivot Shaft	7.	Arm With Rod Dis-connected
2.	Upper Pivot Bracket	5.	Snap Ring	8.	Arm Cutter Bar Held Down
3.	Alignment Slots	6.	Washer	9.	Arm Cutter Bar Held UP

Lower Pivot Support



M173501

1.	Lower Rod Arm	3.	Dirt Seal	5.	Upper Rod Arm
2.	Lower Pivot Support	4.	Spring		

1020 FLEXIBLE CUTTER BAR HEADER

Linkage Sensing Adjustment

Before making any adjustments to the sensing linkage, make sure the header sensing tube, feeler pads and springs have been set properly. The following instructions will assume that the header is set correctly.

1. Verify that when the cutter bar flexes through its complete range that the upper pivot shaft and arm rotates 70° . With the cutter bar held in the center of its flex range the upper pivot's mounting bolts, potentiometer shaft and upper rod ball socket should all be in alignment (a straight line through all points).
2. Using a voltmeter monitor the voltage signal on the wire located in the "B" terminal of the connector. The voltage should vary from approximately 0.75 – 5.0 volts when the cutter bar flexes through its complete range. With the cutter bar held in the center of its flex range the voltage should be approximately 2- 2.5 volts.

