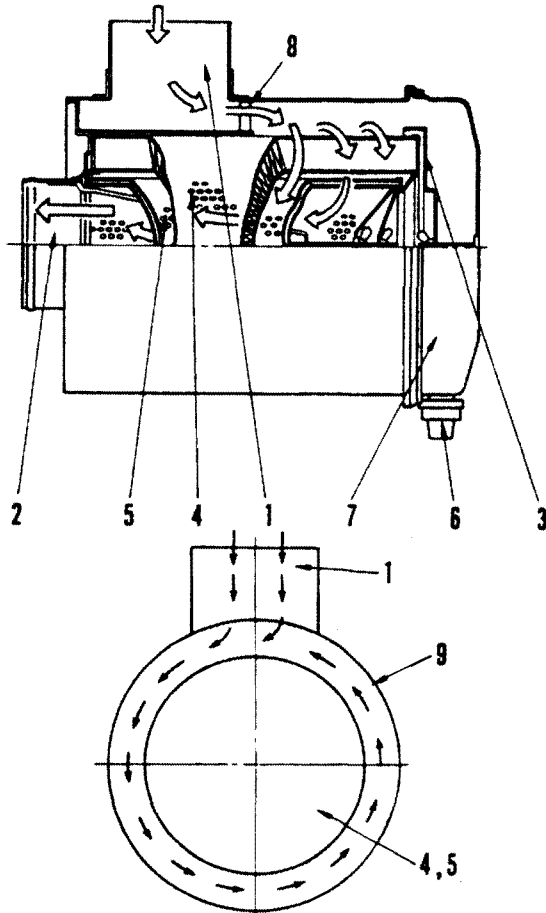
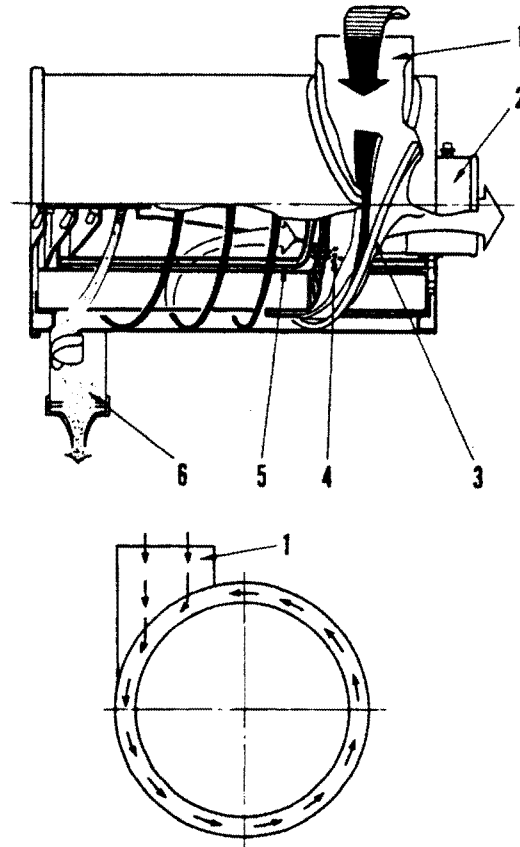


AIR CLEANER

Current type (FHG)



FTG type



- | | | |
|---------------|--------------------|----------------------------|
| 1. Inlet | 4. Primary element | 7. Dust pan |
| 2. Outlet | 5. Safety element | 8. Diffusion vane (sleeve) |
| 3. Guide vane | 6. Vacuator | 9. Body |

ADVANTAGES

- The diameter of the element is the same but the outside diameter of the body is smaller. The inlet is placed in the direction of connection, so ample centrifugal force can be obtained from a simple spiral guide vane, without using a diffusion vane.
- There is no dust pan of diffusion vane, so the structure is simple.

STRUCTURE

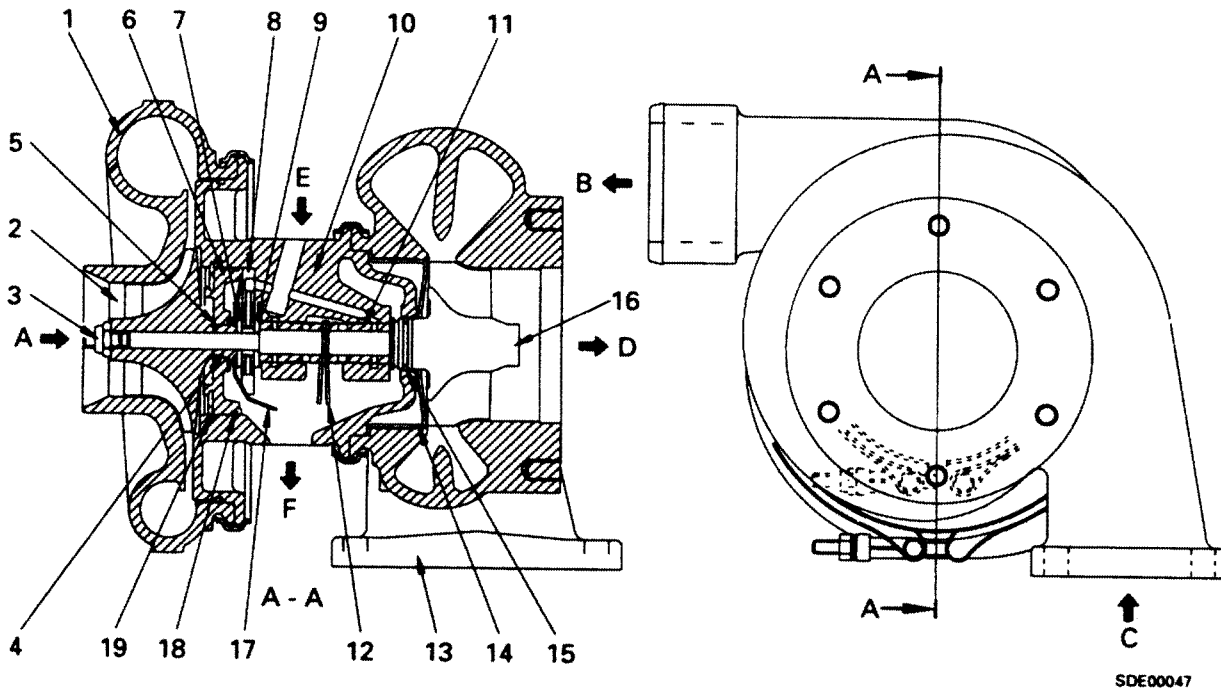
- Air containing dust is sucked in from inlet (1) at a tangent, and the dust is separated by the centrifugal force of guide vane (3). More than 99.9% of the remaining dust is removed by primary element (4), and the cleaned air then passes through safety element (5) and outlet (2), and is sucked into the engine.
The dust and moisture that is separated by the guide vane (3) rotates around the inside wall of body (9), and goes inside vacuator (6), where is discharged automatically to the outside.

6137F009-10

615002

TURBOCHARGER

SCHWITZER S3A



- | | |
|---------------------|--------------------------|
| 1. Blower housing | 15. Piston ring |
| 2. Blower impeller | 16. Turbine impeller |
| 3. Locknut | 17. Oil deflector |
| 4. Flinger | 18. O-ring |
| 5. Piston ring | 19. Snap ring |
| 6. Insert | |
| 7. Thrust ring | A. Air intake |
| 8. Thrust bearing | B. Air output |
| 9. Spacer | C. Exhaust (inlet port) |
| 10. Center housing | D. Exhaust (outlet port) |
| 11. Journal bearing | E. Oil (inlet port) |
| 12. Clip | F. Oil (outlet port) |
| 13. Turbine housing | |
| 14. Back plate | |

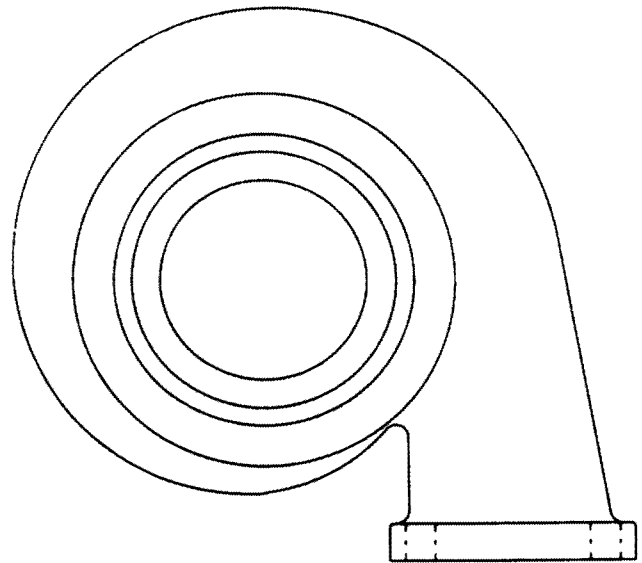
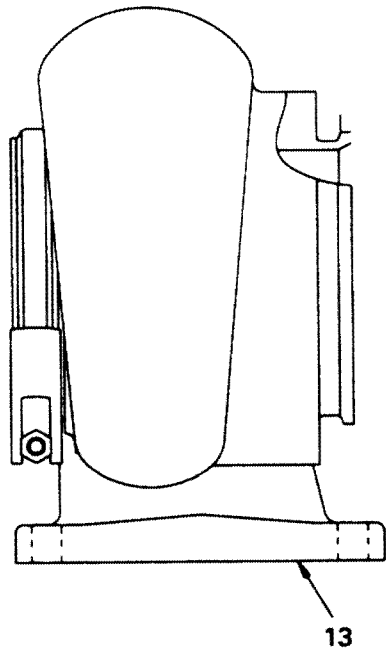
Turbocharger specifications

- | | |
|-----------------------|-----------------------------------|
| Type | : Schwitzer S3A |
| Overall length | : 274.3 mm |
| Overall width | : 277.8 mm |
| Overall height | : 225.3 mm |
| Weight | : 16 kg |
| Direction of rotation | : Clockwise (as seen from blower) |

615002

SDE00047

615002

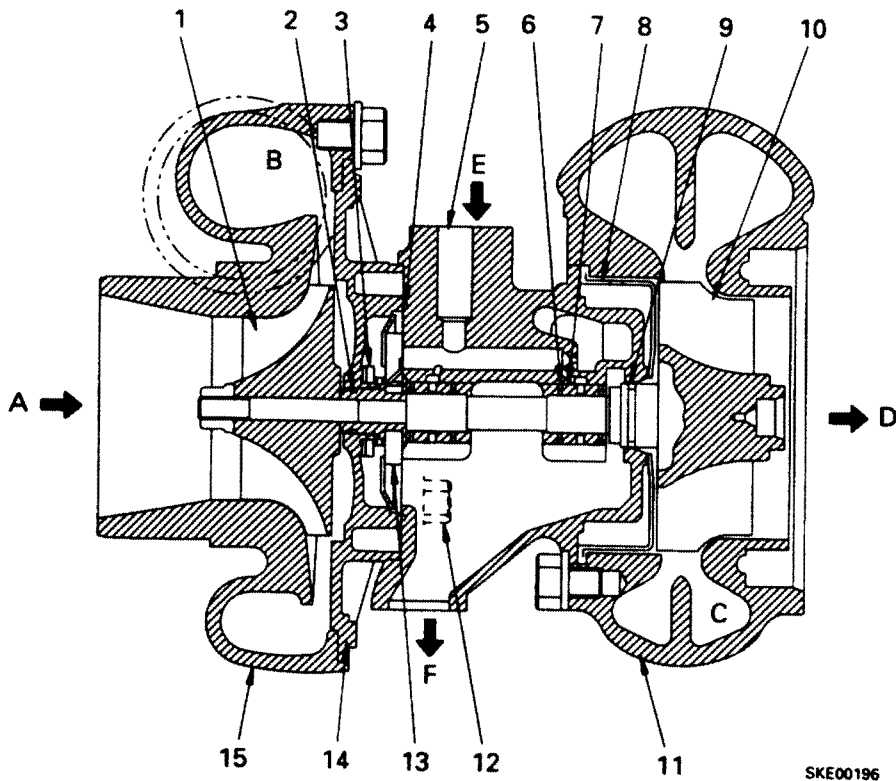


SKE00195

Turbocharger exhaust port: Seal ring type

D. Exhaust outlet port

GARRET TO4E



615002

- 1. Blower impeller
- 2. Seal ring (piston ring)
- 3. Thrust collar
- 4. Seal ring
- 5. Center housing
- 6. Snap ring (retaining)
- 7. Journal bearing
- 8. Heat shroud
- 9. Seal ring (piston ring)
- 10. Shaft and turbine impeller
- 11. Turbine housing
- 12. Bolt
- 13. Thrust bearing
- 14. Back plate
- 15. Blower housing

- A. Intake inlet port
- B. Air supply outlet port
- C. Exhaust inlet port
- D. Exhaust outlet port
- E. Oil inlet port
- F. Oil outlet port

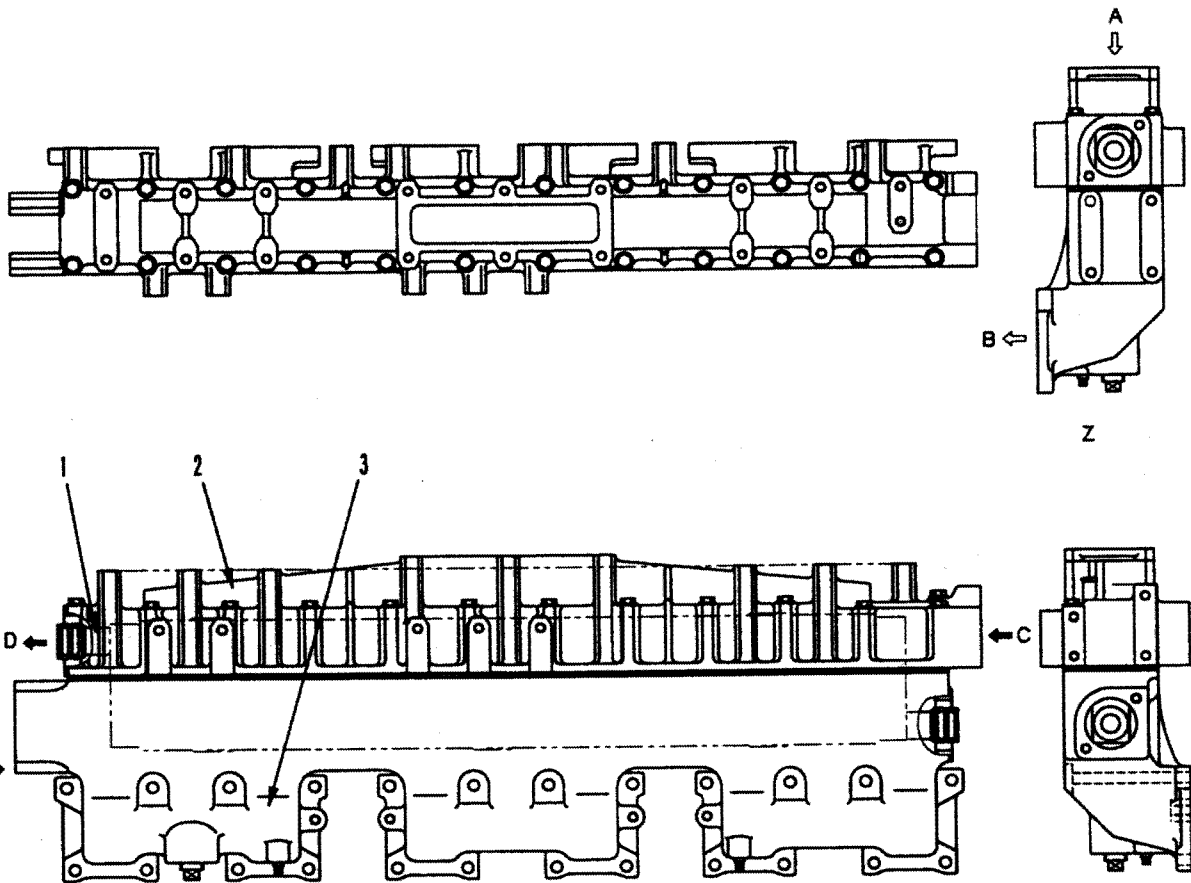
Turbocharger

Type: Garret TO4E
 Overall length: 229 mm
 Overall width: 222 mm
 Overall height: 185 mm
 Weight: 9 kg
 Direction of rotation: Right (as seen from blower)

AFTERCOOLER

Water-cooled type
SA6D125-2

★ The specifications may be different from the following figure, depending on the type of machine.



615002

SXE01518

- 1. Aftercooler core
- 2. Aftercooler cover
- 3. Intake manifold

- A. Intake air inlet
- B. Intake air outlet
- C. Water inlet (from cylinder head)
- D. Water outlet (to thermostat)