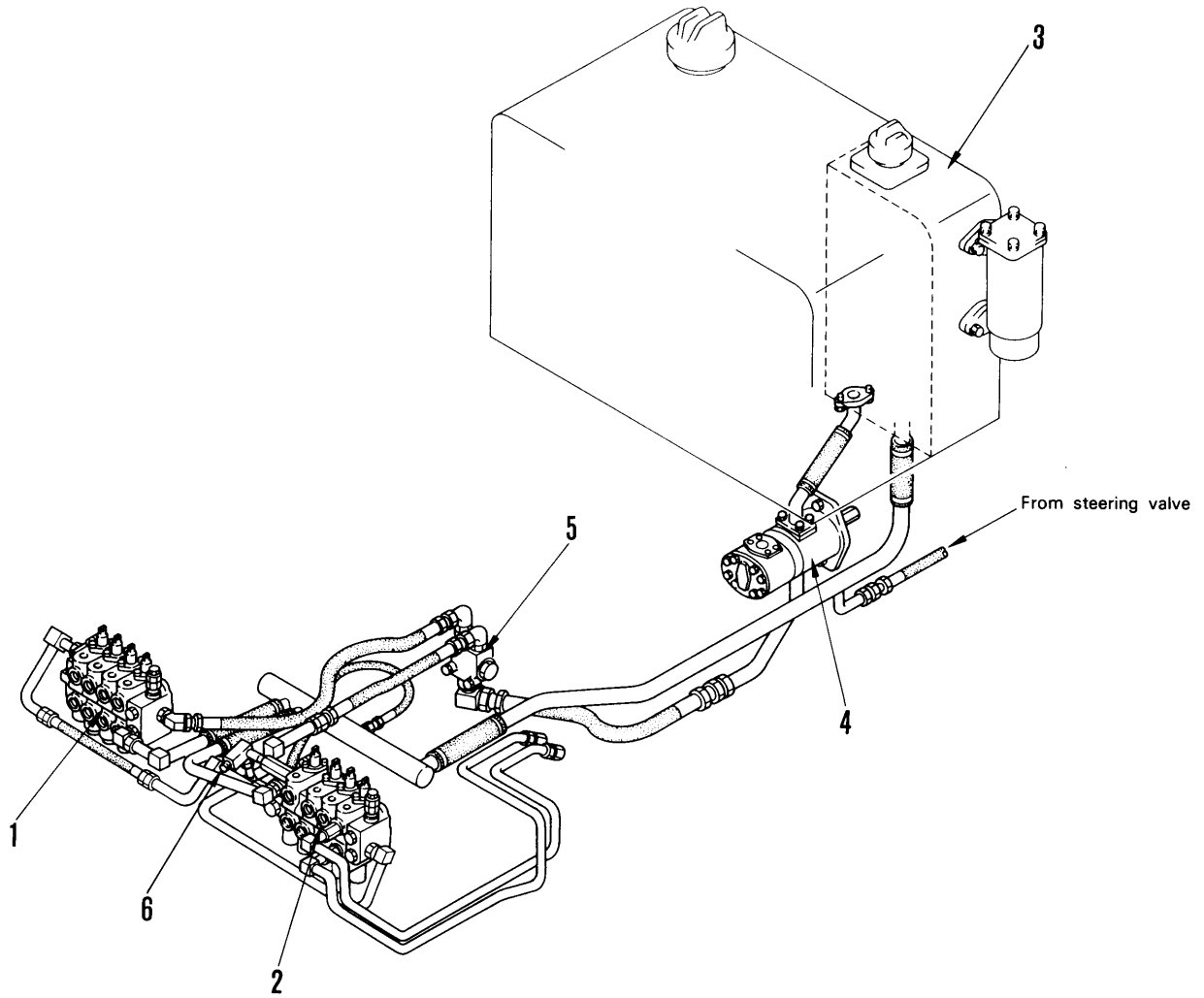


P Type

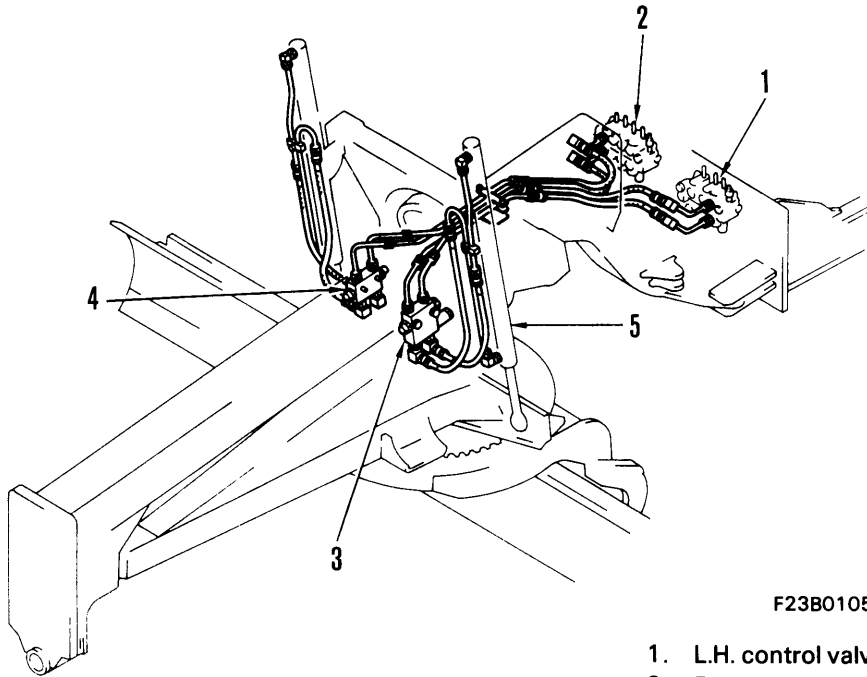


F23BH1039-1

- 1. Hydraulic control valve (R.H.)
- 2. Hydraulic control valve (L.H.)
- 3. Hydraulic oil tank
- 4. Work equipment pump
- 5. Flow divider
- 6. Circle rotation relief valve

BLADE LIFT CONTROL PIPING

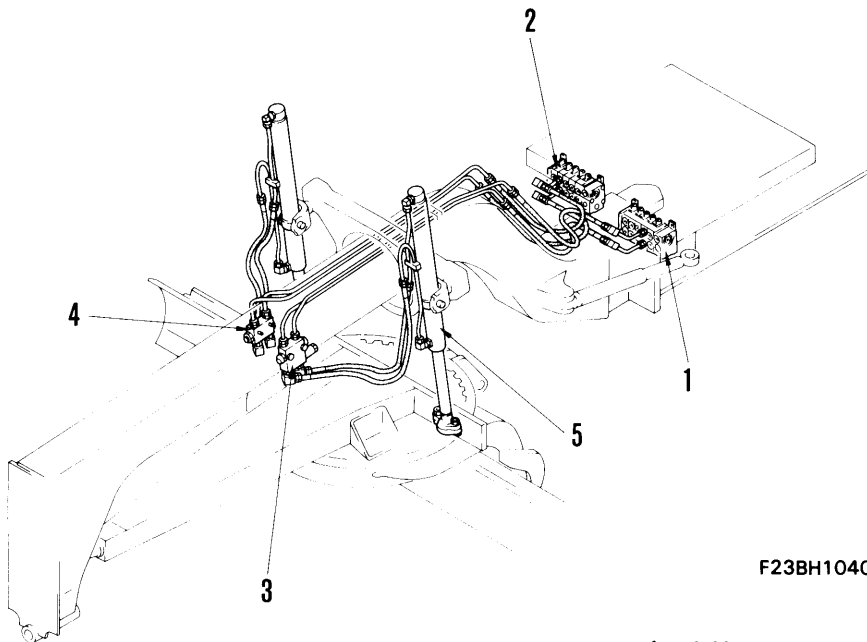
A, B, C, E, F, Type



F23B01053

- 1. L.H. control valve
- 2. R.H. control valve
- 3. Pilot check valve, L.H. (for blade lift)
- 4. Pilot check valve, R.H. (for blade lift)
- 5. Blade lift cylinder

D, M, N Type



F23BH1040

- 1. L.H. control valve (5 spools)
- 2. R.H. control valve (5 spools)
- 3. Pilot check valve, L.H. (for blade lift)
- 4. Pilot check valve, R.H. (for blade lift)
- 5. Blade lift cylinder