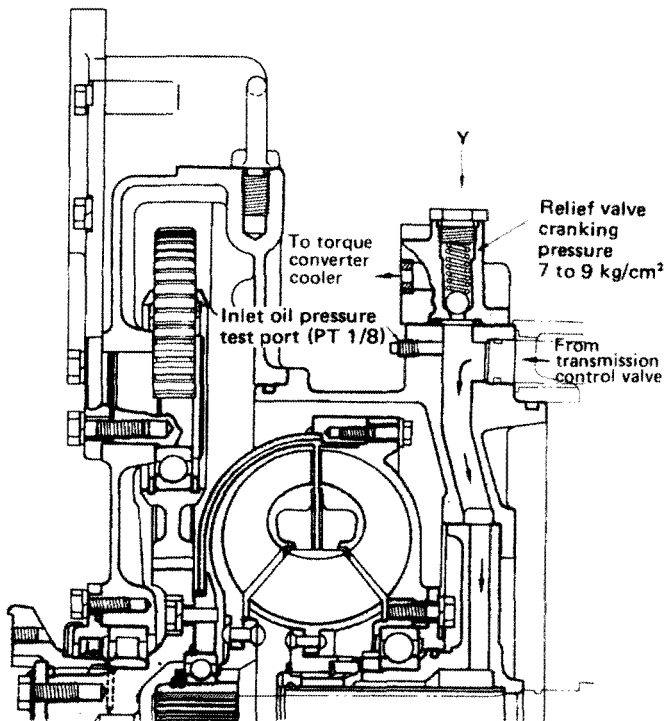


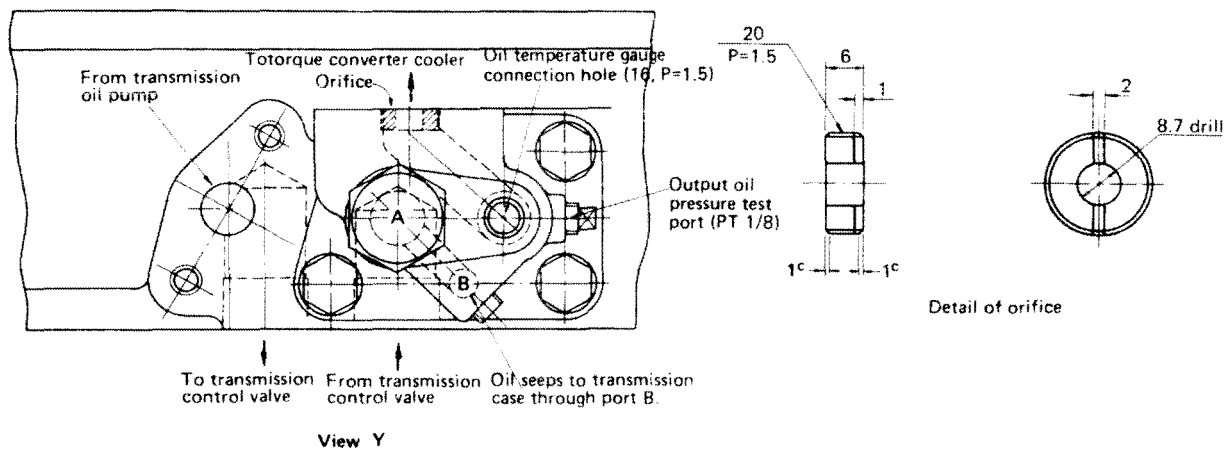
TORQUE CONVERTER RELIEF VALVE



Relief valve

The relief valve provided in the inlet port prevents oil pressure within torque converter from excessively rising. Oil supplied from the control valve under pressure flows through the oil passage in the torque converter housing to the torque converter after filling port A. When the pressure of oil flowing into the torque converter rises to 7 kg/cm² or more, the relief valve opens to drain oil to the transmission case through the port B.

The orifice provided in the torque converter outlet port always keeps oil pressure in the converter to 3 kg/cm² or more.



TORQFLOW TRANSMISSION

D58E-1 Serial No. 80888-81637

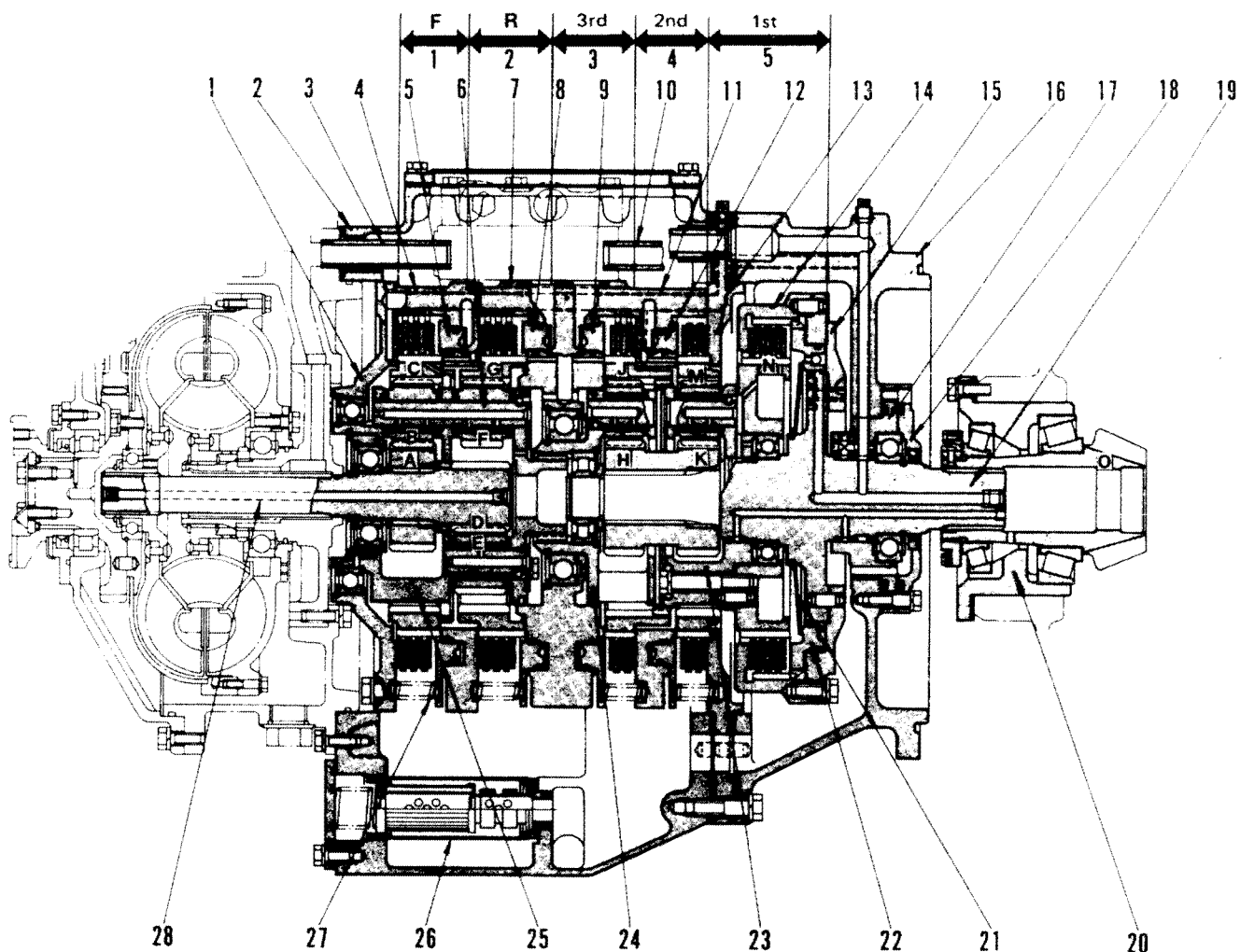
D58E-1A Serial No. 80888-81637

D58P-1 Serial No. 80588-81058

Model D58-1 is equipped with planetary type transmission and is a combination of planet gear system and disc clutch, and is get Forward and Reverse three speeds. For the forward or reverse and each speed, two of 5 disc clutches of the planetary gear system are hydraulically

locked by actuating the control valve.

No. 1 clutch is for Forward, No. 2 for Reverse, No. 3 for 3rd speed, No. 4 for 2nd speed, and No. 5 for 1st speed.



135F016