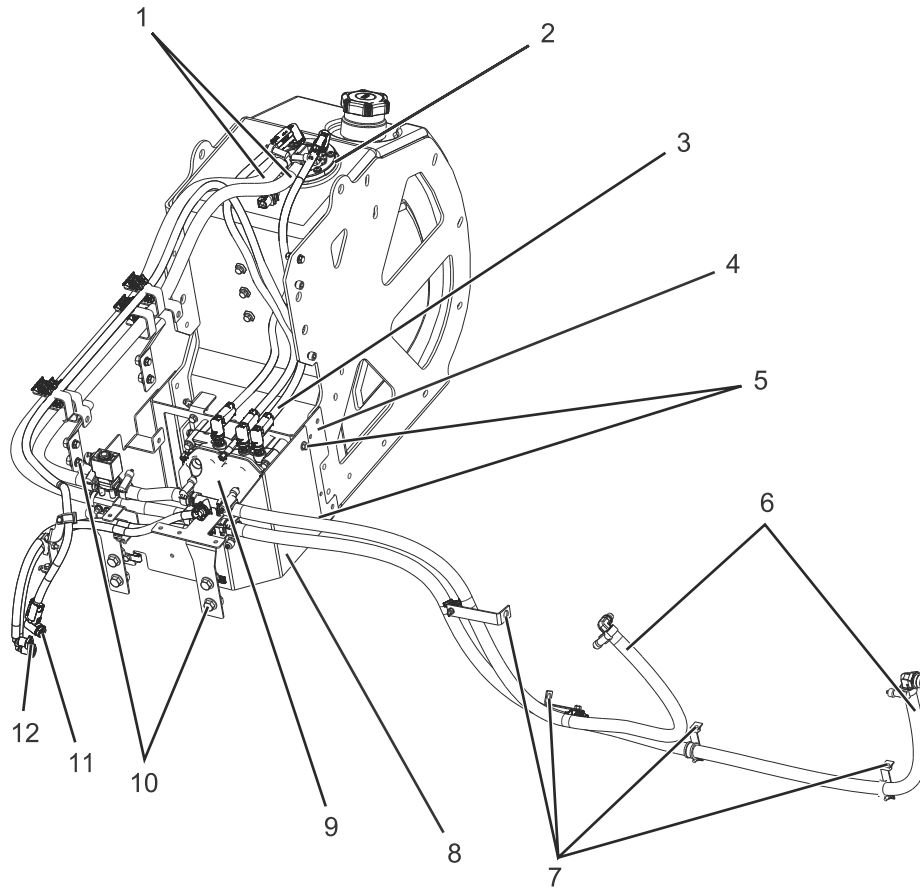


12.1.21. Diesel Exhaust Fluid (DEF) Pressure Line and Coolant Lines – Removal



0000042173

- |   |   |
|---|---|
| 1. Diesel Exhaust Fluid (DEF) tank coolant line (2) | 8. DEF supply module cover                              |
| 2. DEF tank pickup assembly                         | 9. DEF supply module                                    |
| 3. DEF supply module pressure line                  | 10. DEF line and coolant line mounting bracket bolt (8) |
| 4. DEF supply module bracket                        | 11. DEF dosing valve pressure line                      |
| 5. DEF supply module cover bolt (4)                 | 12. DEF dosing valve coolant line (2)                   |
| 6. DEF engine block coolant line (2)                |   |
| 7. DEF coolant line support bracket (4)             |   |

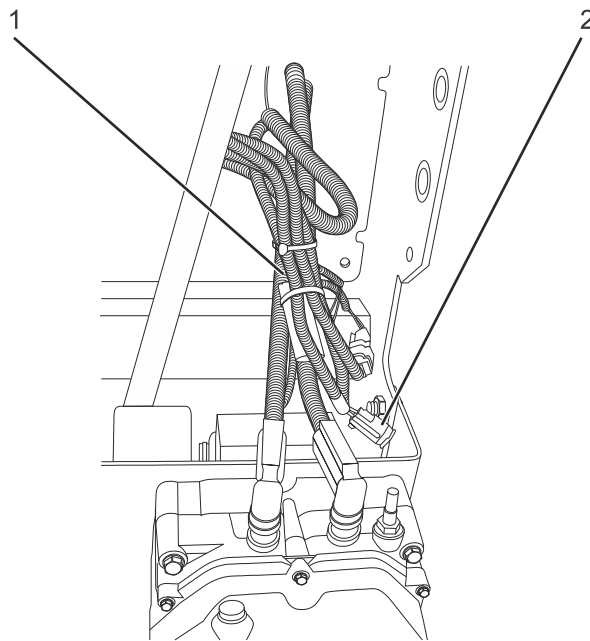
Figure 116 Diesel Exhaust Fluid (DEF) Pressure Line and Coolant Lines.

**NOTE – To disconnect DEF lines from fittings, push inward on white quick-release clip.**

**NOTE – Depending on vehicle configuration, DEF coolant lines may be equipped with quick disconnect fittings. To disconnect fittings, press inward on release tab.**

1. Disconnect two DEF coolant lines (Figure 116) (Item 1) from DEF tank pickup assembly (Figure 116) (Item 2).
2. Disconnect DEF dosing valve pressure line (Figure 116) (Item 11) from DEF dosing valve.

3. Disconnect two DEF dosing valve coolant lines (Figure 116) (Item 12) from DEF dosing valve.
4. Remove eight DEF line and coolant line mounting bracket bolts (Figure 116) (Item 10) from vehicle frame.
5. Remove four DEF coolant line support bracket bolts (Figure 116) (Item 7) from engine block.
6. Disconnect two DEF engine block coolant lines (Figure 116) (Item 6) from engine block coolant line fittings.
7. Remove four DEF supply module cover bolts (Figure 116) (Item 5) from DEF supply module bracket (Figure 116) (Item 4), remove DEF supply module cover (Figure 116) (Items 4 and 5).
8. Disconnect DEF supply module pressure line (Figure 116) (Item 3) from DEF supply module (Figure 116) (Item 9).



0000041914

1. Diesel Exhaust Fluid (DEF) tank harness

2. DEF pressure line heater electrical connector

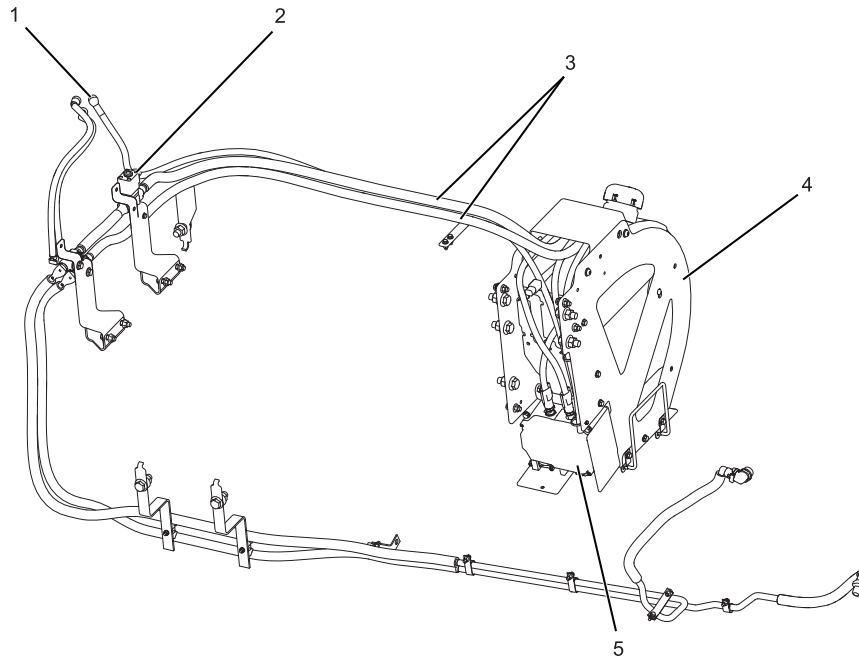
**Figure 117 Diesel Exhaust Fluid (DEF) Tank Wiring Harness.**

9. Disconnect DEF pressure line heater electrical connector (Figure 117) (Item 2) from DEF tank wiring harness (Figure 117) (Item 1).
10. Remove DEF pressure line (Figure 116) (Items 11 and 3) and DEF coolant lines (Figure 116) (Items 1, 6 and 12) from vehicle.

### 12.1.22. Diesel Exhaust Fluid (DEF) Pressure Line and Coolant Lines – Installation

1. Install eight DEF line and coolant line mounting bracket bolts (Figure 116) (Item 10) to vehicle frame.
2. Connect DEF pressure line heater electrical connector (Figure 117) (Item 2) to DEF tank wiring harness (Figure 117) (Item 1).
3. Connect DEF supply module pressure line (Figure 116) (Item 3) to DEF supply module (Figure 116) (Item 9).
4. Install four DEF supply module cover bolts (Figure 116) (Item 5) to DEF supply module bracket (Figure 116) (Item 4).
5. Connect two DEF engine block coolant lines (Figure 116) (Item 6) to engine block coolant fittings.
6. Install four DEF coolant line support bracket bolts (Figure 116) (Item 7) to engine block.
7. Connect two DEF dosing valve coolant lines (Figure 116) (Item 12) to DEF dosing valve.
8. Connect DEF dosing valve pressure line (Figure 116) (Item 11) to DEF dosing valve..
9. Connect two DEF coolant lines (Figure 116) (Item 1) to DEF tank pickup assembly (Figure 116) (Item 2).

12.1.23. Diesel Exhaust Fluid (DEF) System



0000053805

- |   |                              |
|---|------------------------------|
| 1. Diesel exhaust fluid (DEF) pressure line | 3. DEF tank coolant line (2) |
| 2. DEF tank heater valve                    | 4. DEF tank                  |
|   | 5. DEF tank supply module    |

Figure 118 DEF System.

**NOTE – Removal and installation procedures for the DEF system shown above are similar to the conventional system previously mentioned. Actual component location may vary depending on vehicle configuration.**