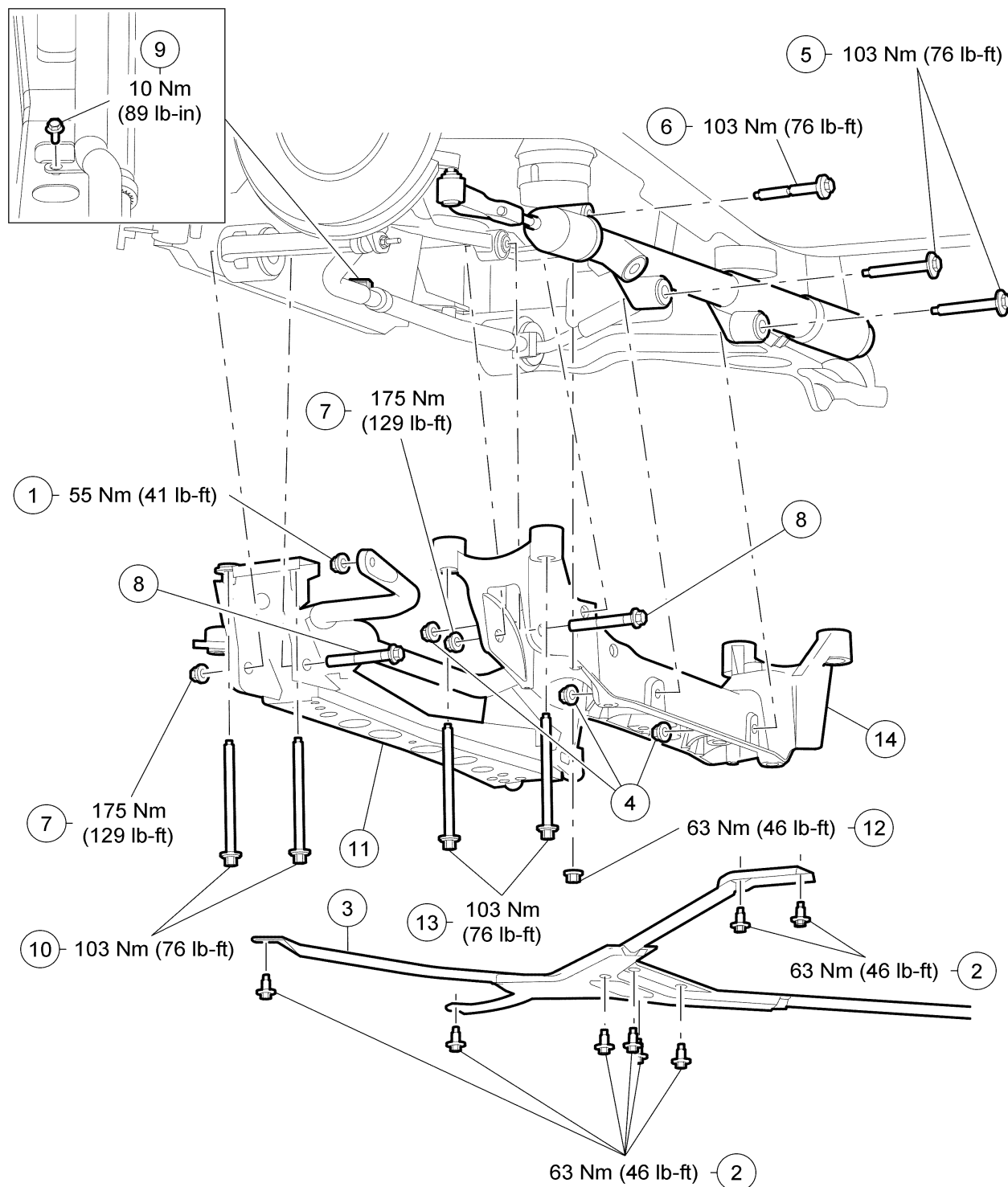


## REMOVAL AND INSTALLATION

### Front Subframe and Components — Exploded View



N0002792

**REMOVAL AND INSTALLATION (Continued)**

Item	Part Number	Description
1	—	Front stabilizer bar link nuts (2 required)
2	N606702-S	Front cross brace bolts (10 required)
3	025K30	Front cross brace
4	W520214-S60	Steering gear nuts (3 required)
5	W705112-S426	Steering gear bolts (2 required)
6	W705051-S426	Steering gear bolt
7	W105518-S427	Control arm nuts (4 required)

(Continued)

Item	Part Number	Description
8	3B236	Control arm cam bolts (4 required)
9	W705968-S	A/C line bracket bolt
10	W708091-S426	Radiator crossmember bolts
11	5019	Radiator crossmember
12	—	Engine isolator mount nuts (2 required)
13	W706329-S426	Engine crossmember bolts (4 required)
14	5025	Engine crossmember

1. For additional information, refer to the procedures in this section.