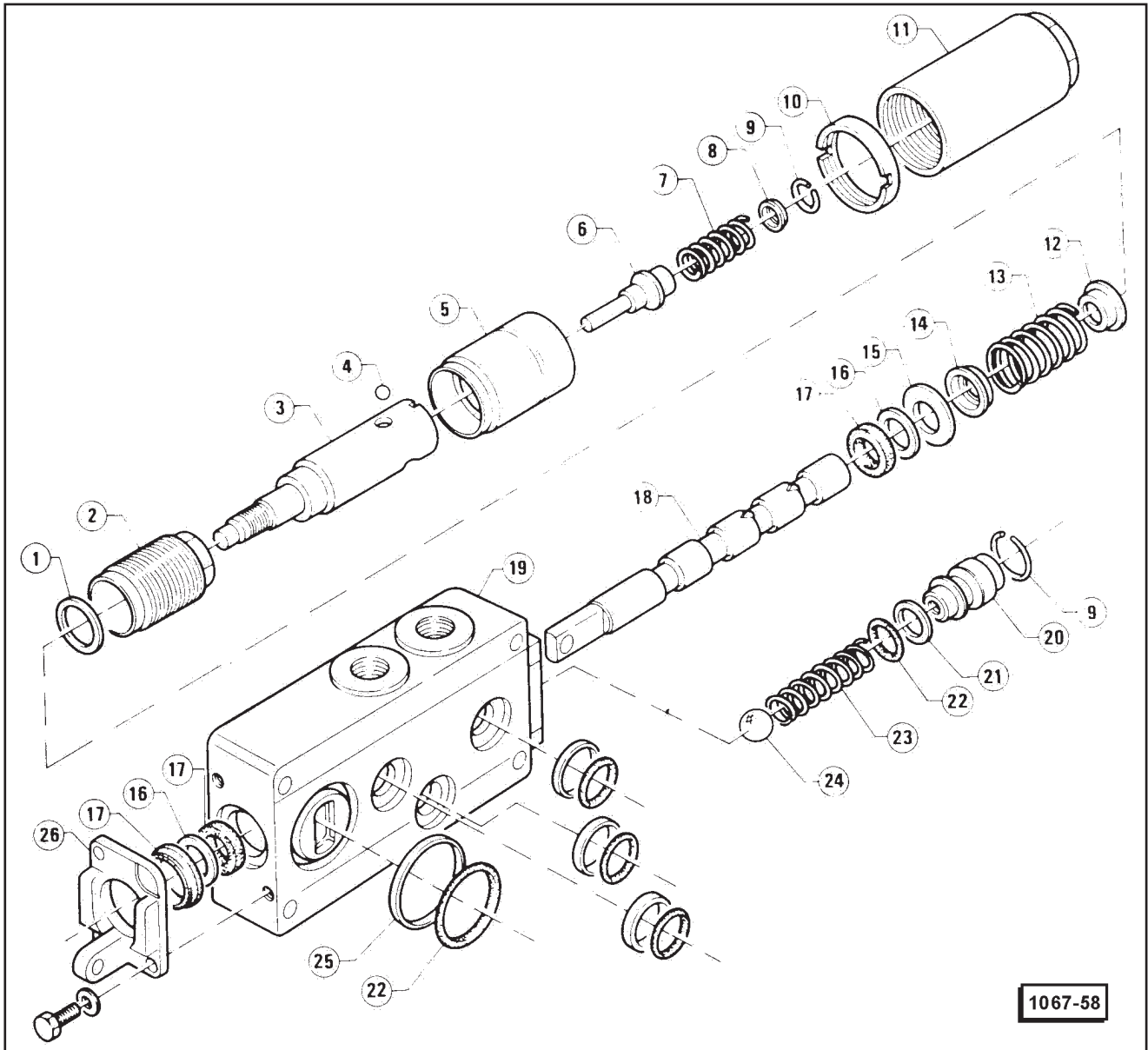


DOUBLE EFFECT DISTRIBUTOR WITH FLOAT POSITION



- | | | |
|--------------------|------------------------|----------------------------|
| 1 - Shim ring | 10 - Ring nut | 19 - Distributor casing |
| 2 - Fitting | 11 - Cap | 20 - Non return valve |
| 3 - Threaded bush | 12 - Outside bell | 21 - Teflon ring |
| 4 - Ball | 13 - Spring | 22 - O-ring |
| 5 - Outside bush | 14 - Inside bell | 23 - Spring |
| 6 - Pin | 15 - Shim ring | 24 - Non return ball valve |
| 7 - Spring | 16 - Teflon ring | 25 - Teflon ring |
| 8 - Washer | 17 - Oil guard ring | 26 - Support |
| 9 - Retaining ring | 18 - Distributor shaft | |

DISASSEMBLY

With reference to the previous diagram carry out disassembly as described in “Simple/double Effect Distributors with Automatic Centering” noting the following differences:

- The distributor is not equipped for the transformation to a single effect, therefore it does not have the relative transformation screws.
- In the distributor shaft **18** there is no pin valve.

- The threaded bush 3 is not equipped with the automatic centering device.
- There is no shim adjustment at C between outside bush 5 and fitting 2.

CHECKS AND VERIFICATIONS

Refer to: Simple/double Effect Distributors - Checks and Verifications.

REASSEMBLY

Proceed to remount using the reverse method to that of the dismantling taking note of the following recommendations:

- Clean with suitable solvent the cap threads and fittings.
- Apply recommended sealer on the cap threads. Replace all the copper gaskets and the seal rings.
- Tighten to the recommended torque the following components:

Tightening torque

Threaded bush which clamps spring to distributor shaft

15 ÷ 20 Nm

(1,5 ÷ 2 kgm; 10.85 to 14.46 ft lb)

Cap on the rear end of distributor

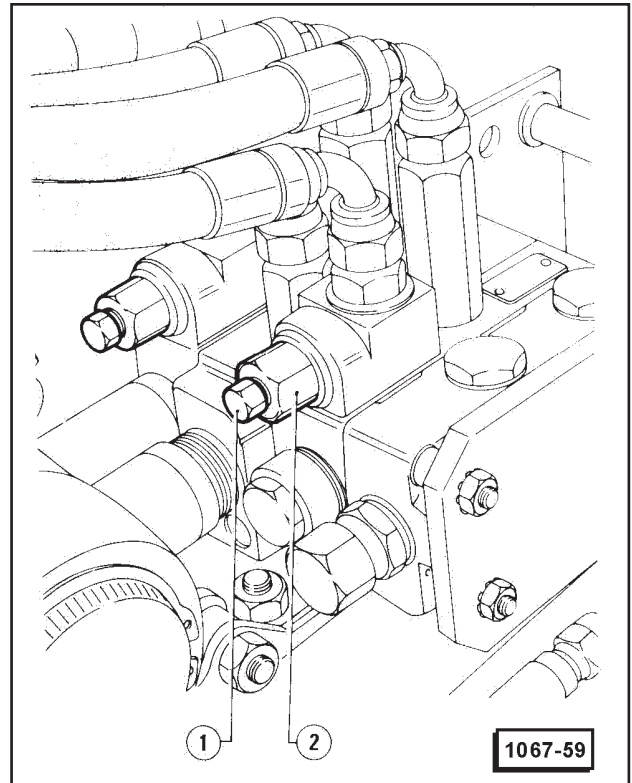
35 ÷ 50 Nm

(1,5 ÷ 2 kgm; 25.31 to 36.15 ft lb)

- Referring to diagram on page 400, remount the outside bush 5 with the outside notching towards the cap 11.

TRANSFORMATION OF DISTRIBUTOR FROM DOUBLE TO SINGLE EFFECT

For certain requirements it is possible to change the distributor from double effect to single effect. To carry out the transformation from double to single effect it is necessary to unscrew the screw 1; by 4 to 5 turns, keeping the fitting blocked 2. And vice-versa by totally unscrewing to double effect.



- 1 - Transformation screw - single/double effect
- 2 - Fitting

INSTALLATION

Proceed to reassemble the distributors and safety valve using the reverse order to that of the disassembly taking note of the following instructions.

- Replace the teflon rings and O-rings on the surface of the distributor couplings and the safety valve.
- Clean with recommended solvent the fitting threads.
- Apply recommended sealer to the fitting threads on the distributor.
- Tighten the fittings on the distributor inserting the new copper gaskets.
- When the reassembly is completed, start the engine and the distributor so as to check the correct functioning and the absence of leaks.
- Control and eventually refill the gear oil level.