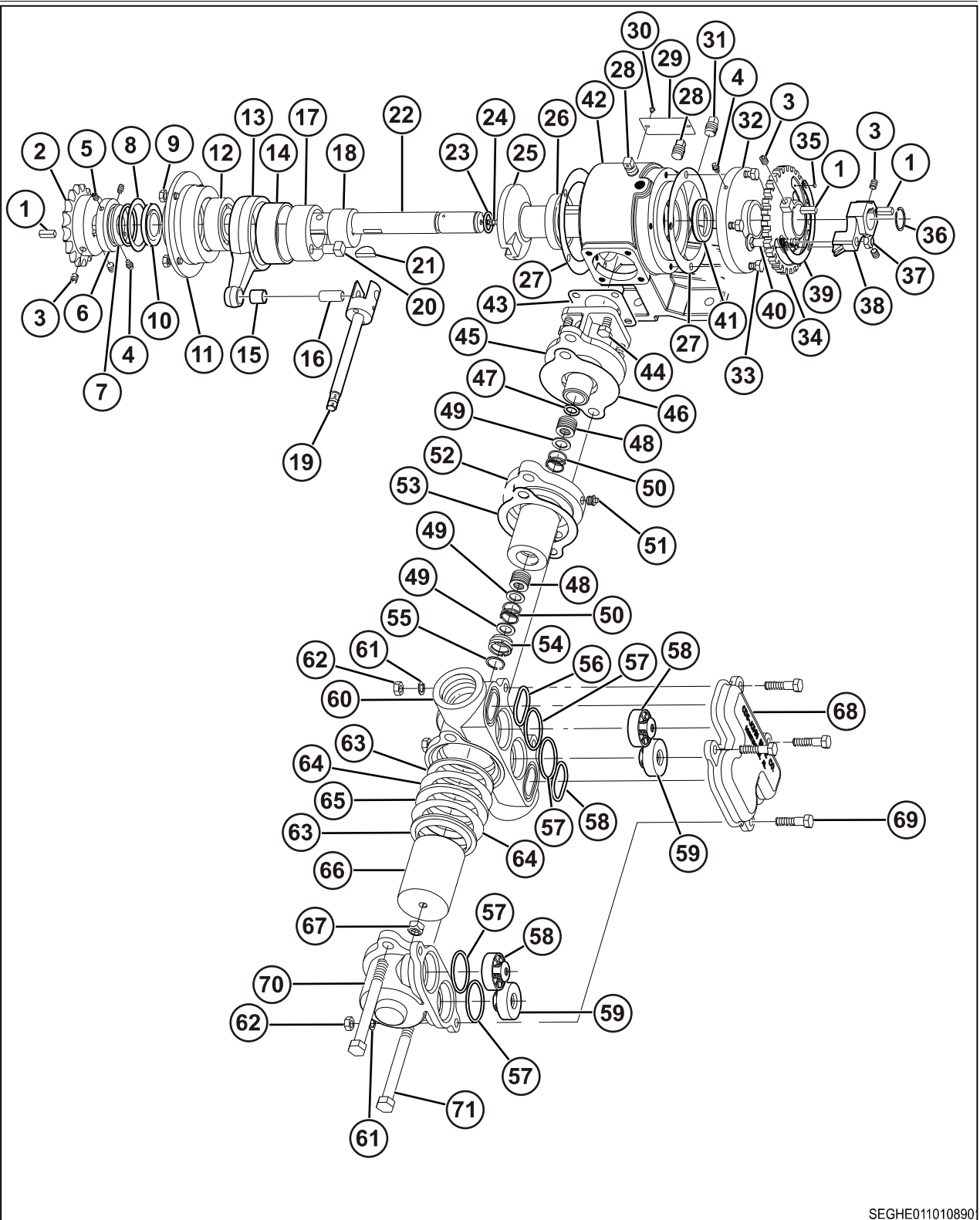


### 8.1.3 Single piston pump components



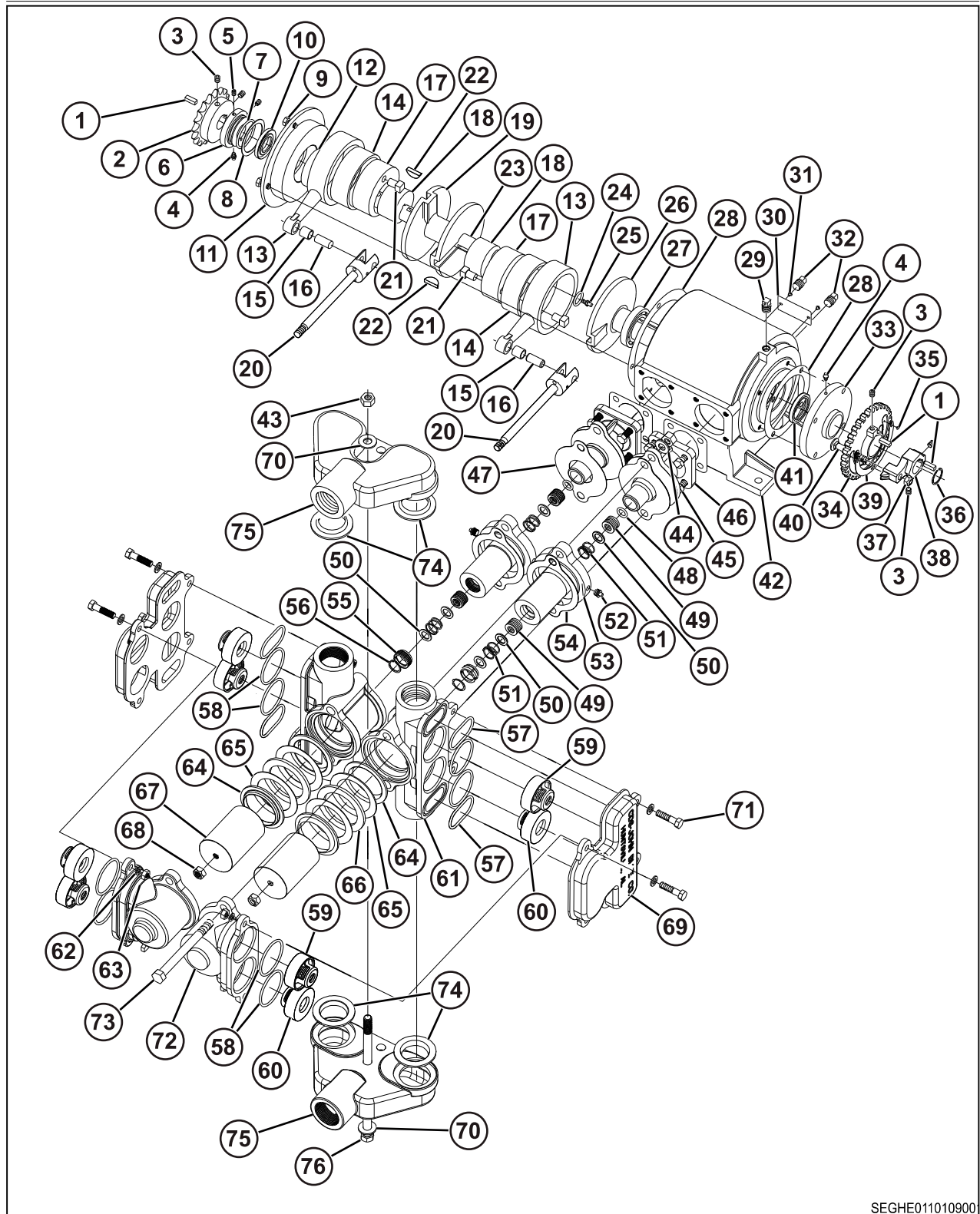
SEGHE011010890

Fig. 3

- |                    |                     |
|--------------------|---------------------|
| (1) Key            | (5) Set screw       |
| (2) Sprocket       | (6) Sprocket spacer |
| (3) Set screw      | (7) O-ring          |
| (4) Grease fitting | (8) Thrust washer   |

- |                          |                              |
|--------------------------|------------------------------|
| (9) Bolt                 | (41) Oil seal                |
| (10) Oil seal            | (42) Crankcase               |
| (11) Cover plate         | (43) Crosshead gasket        |
| (12) Bearing             | (44) Bolt                    |
| (13) Connecting rod      | (45) Crosshead guide         |
| (14) Journal bearing     | (46) Stuffing box gasket     |
| (15) Rod bushing         | (47) O-ring                  |
| (16) Rod pin             | (48) Packing V set           |
| (17) Outer eccentric     | (49) Packing washer          |
| (18) Inner eccentric     | (50) Packing spring          |
| (19) Piston rod assembly | (51) Grease fitting          |
| (20) Eccentric pin       | (52) Stuffing box            |
| (21) Woodruff key        | (53) Inboard cylinder gasket |
| (22) Crankshaft          | (54) Stuffing box insert     |
| (23) O-Ring              | (55) Snap ring               |
| (24) Grease fitting      | (56) O-ring                  |
| (25) Setting sleeve      | (57) O-ring                  |
| (26) Bearing             | (58) Discharge valve         |
| (27) Gasket              | (59) Suction valve           |
| (28) Vent plug           | (60) Inboard cylinder        |
| (29) Name plate          | (61) Lock washer             |
| (30) Drive shaft         | (62) Hex nut                 |
| (31) Oil plug            | (63) Piston - packing        |
| (32) Flange cover        | (64) Piston - gasket         |
| (33) Hex bolt            | (65) Piston - washer         |
| (34) Setting hub         | (66) Piston                  |
| (35) Setting scale screw | (67) Piston - locking nut    |
| (36) Snap ring           | (68) Valve cover             |
| (37) Lock nut            | (69) Bolt                    |
| (38) Setting pointer     | (70) Outboard cylinder       |
| (39) Setting scale       | (71) Bolt                    |
| (40) Carriage bolt       |                              |

### 8.1.4 Double piston pump components



SEGHE011010900

Fig. 4

- |                    |                     |
|--------------------|---------------------|
| (1) Key            | (5) Set screw       |
| (2) Sprocket       | (6) Sprocket spacer |
| (3) Set screw      | (7) O-ring          |
| (4) Grease fitting | (8) Thrust washer   |