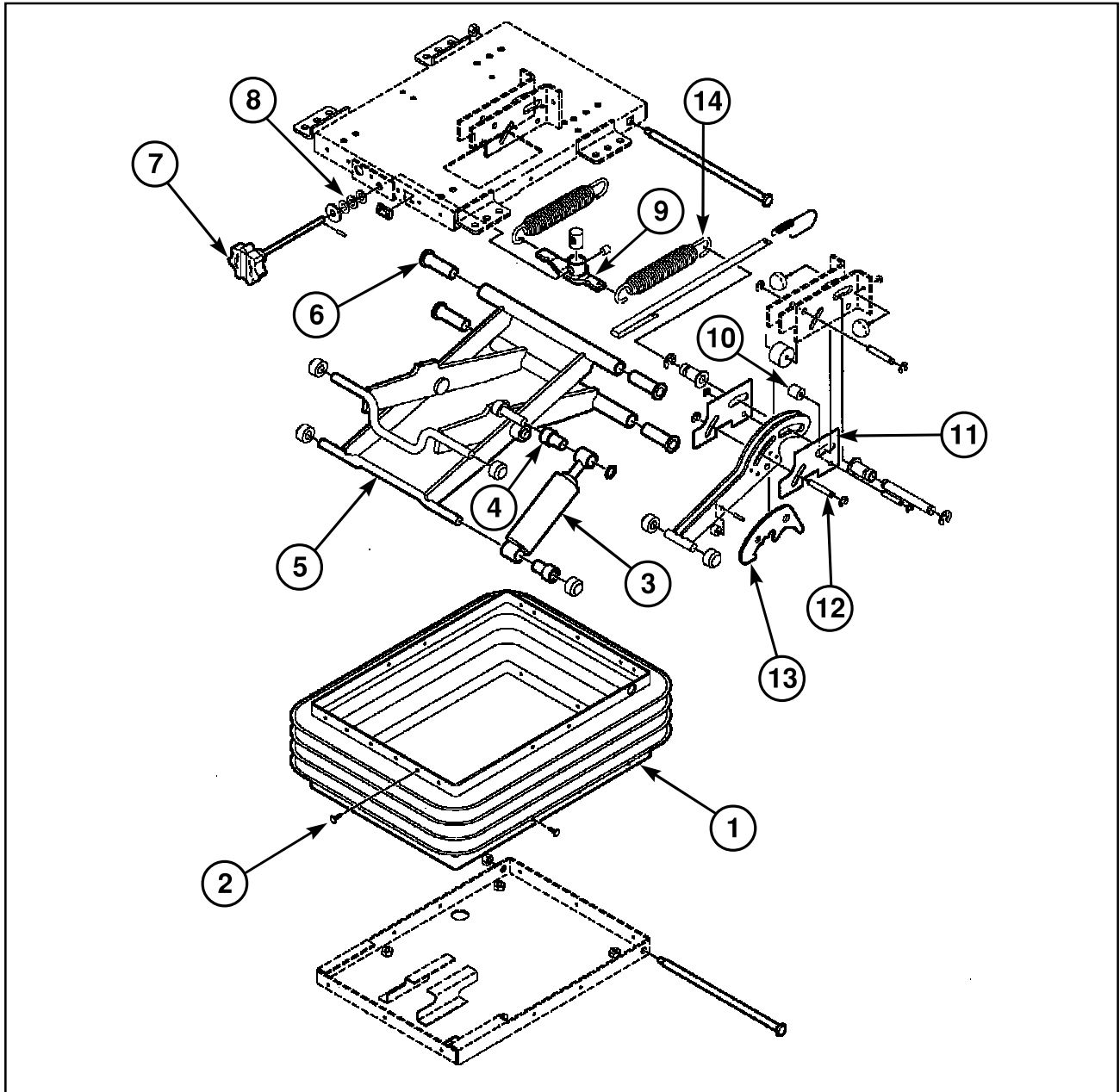


SEAT SUSPENSION



MECHANICAL SEAT

L99A-346

- | | |
|-----------------------|--------------------------|
| 1. Suspension Boot | 8. Thrust Bearing |
| 2. Boot Button | 9. Adjuster |
| 3. Shock Absorber Kit | 10. Cam Follower |
| 4. Shock Bearing (2) | 11. Spacer (2) |
| 5. Seat Scissor Arm | 12. Pin-with Grooves (2) |
| 6. Shaft Bearing (4) | 13. Cam |
| 7. Spinner Knob | 14. Springs (2) |

WINDSHIELD

See the safety warnings at the beginning of this section and follow the procedures.

If necessary, contact a glass installation dealer to install the windshield.

The following items will be needed to install the glass:

- a. Glass Cleaner, Essex part number 435.18, or equivalent.
 - b. Glass Primer, Essex part number 435.20, or equivalent.
 - c. Metal Primer, Essex part number 435.48, or equivalent.
 - d. Urethane Sealant, Essex part number 57302, or equivalent.
 - e. Duct tape. The duct tape is used to hold the windshield in position while the sealant cures.
1. Park the machine on a solid level surface and lower the header to the floor.
 2. Stop the engine and apply the parking lock. Make sure the steering wheel is centered and locked.
 3. Remove all of the old glass from the opening.
 4. Remove any loose sealant from the opening.
 5. Loosen the mounting hardware for the glass adjusters. Slide the glass adjusters out away from the cab.
 6. Using the adhesive tape, install the two filler straps on the glass adjusters.
 7. Lay the glass on a level surface so the inner surface of the glass is up.
 8. Apply a 13 mm (1/2 IN) wide area of the cleaner to both sides of the windshields perimeter.
 9. As soon as the cleaner is applied, wipe the cleaner dry to assure the thinnest layer as possible.
 10. Let the cleaner dry an additional five minutes.
 11. Apply a 13 mm (1/2 IN) wide area of the glass primer to both sides of the windshields perimeter. The glass primer must be 3 MILS thick.
 12. Allow the primer to dry 30 minutes before doing the next step.
 13. Apply a thin layer of the metal primer to all of the surfaces where the windshield contacts metal.
 14. Let the metal primer dry for an additional 30 minutes.
 15. Apply a 10 mm (.375 IN) diameter bead of sealant to the primed area where the windshield contacts the metal surfaces.
 16. Install the 14 rubber pads, seven on the top edge and seven on the bottom edge of the windshield. The rubber pads must be spaced evenly across the surface.
 17. Set the top of the windshield in the channel in the top of the cab frame. Move the bottom of the windshield toward the cab until the windshield contacts the sealant. Immediately move the windshield into position so there is full contact between the sealant and the windshield.
 18. Move the windshield adjusters and the lower rails upward to support the bottom of the windshield. Make sure the windshield is between the lower outer rail and the lower inner rail.
 19. Use light pressure to make sure the windshield contacts the sealant all the way around the opening. Hand pressure is enough.
 20. After the windshield is pressed into position, apply a good quality black silicone along the top and bottom inside and outside surfaces of the windshield.
- NOTE: DO NOT open or close the cab door quickly. The change in the air pressure in the cab can cause the windshield to move.*
21. Move the glass adjusters inward to secure the side of the windshield. Tighten the mounting hardware for the glass adjusters.
 22. Clean the windshield using a dry lint free cloth or rag.