

HYDROSTATIC TYPE

Construction

FIG. 8A-04: The Auxiliary pump, 1, supplies oil to the reducing valve, 2. The primary circuit of the reducing valve supplies oil to the steering orbit roll. Refer to the "TRANSMISSION" Section and "HYDRAULIC" Section for more information on the pump and reducing valve.

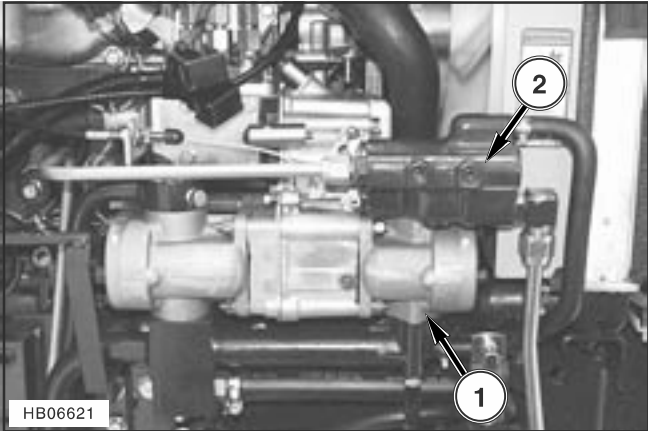


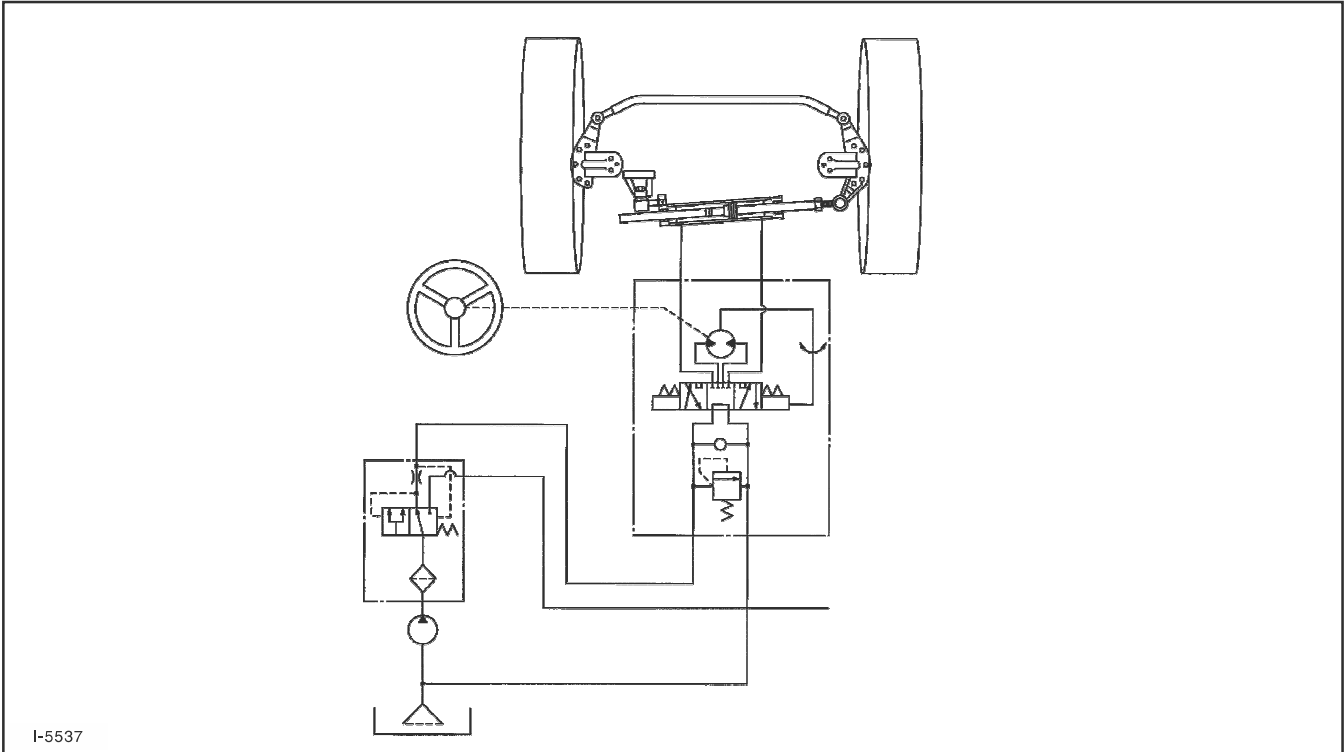
FIG. 8A-04

FIG. 8A-05: The steering unit (mini-orbit roll) controls hydraulic power and activates the front wheels directly through the power steering cylinder. It features minimized vibration at the steering wheel because vibration of the front wheels is not directly transmitted to the steering wheel.

Hydraulic fluid divided into the system through the flow-divider valve is controlled by the orbit roll to activate the cylinder.

In accordance with the operation of the steering wheel, the rotary valve and metering device built in the orbit roll controls the direction and flow rate of the hydraulic fluid and activates the power steering system works.

The relief valve for the steering system is located in the orbit roll and is non-adjustable.



I-5537

FIG. 8A-05

Integral Orbit Roll

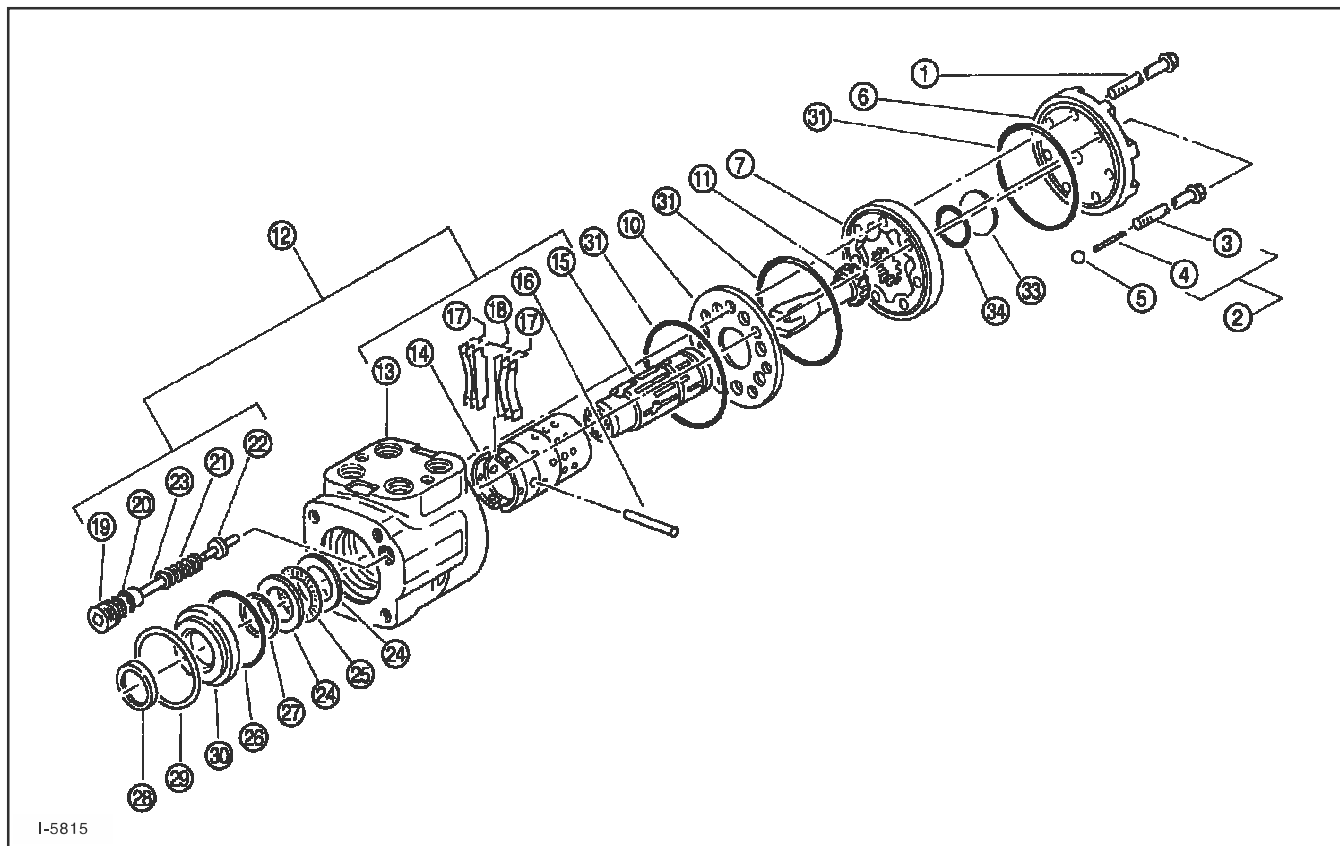


FIG. 8A-06

Components

1	Bolts	6
2	Retainer bolt assembly	1
3	Retainer bolt	(1)
4	Spring pin	(1)
5	Ball	1
6	End cap	1
7	Gerotor	1
10	Spacer plate	1
11	Drive	1
12	Relief valve assembly	1
13	Housing	(1)
14	Sleeve	(1)
15	Spool	(1)
16	Pin	(1)
17	Centering springs	(4)

18	Flat springs	(2)
19	Adjust plug	(1)
20	O-ring	(1)
21	Spring	(1)
22	Poppet	(1)
23	Collar	(1)
24	Bearing races	2
25	Thrust needle bearing	1
26	Seal	1
27	Oil seal	1
28	Dust seal	1
29	Retaining ring	1
30	Seal bushing	1
31	O-rings	3
33	Seal	1
34	O-ring	1