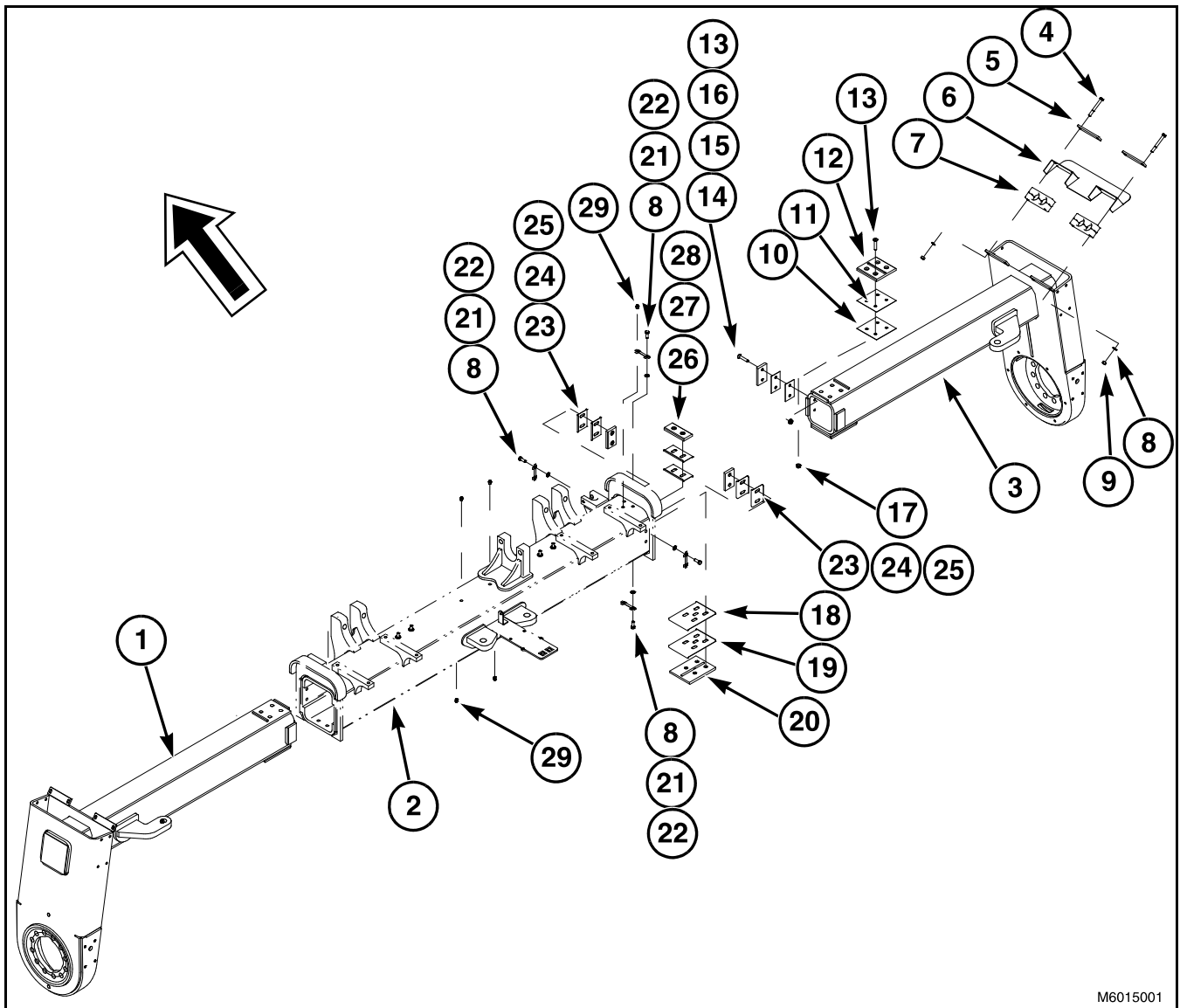


Theory of Operation

Rear Axle Exploded View



M6015001

FIG. 2

FIG. 2: Rear Axle Exploded View.

The large arrow points to the forward direction of the machine.

Item	Quantity	Description
1	1	LH REAR WHEEL LEG
2	1	REAR AXLE 8X8
3	1	RH REAR WHEEL LEG
4	8	0.37-16NCX3.25 BOLT
5	4	COVER PLATE
6	2	REAR LEG WHEEL COVER
7	4	1.50 TWIN CLAMP
8	28	3/8 FLAT WASHER
9	8	0.37-16NC NUT
10	A/R	LARGE WEAR PAD SHIM 20 GA
11	A/R	LARGE WEAR PAD SHIM 16 GA
12	2	LARGE WEAR PAD
13	12	0.38-24X2.00 G8 SCREW
14	A/R	SMALL WEAR PAD SHIM 20 GA
15	A/R	SMALL WEAR PAD SHIM 16 GA
16	2	INNER BOLT ON WEAR PAD
17	12	0.38-24 UNF FLANGE NUT
18	A/R	TOP WEAR PAD SHIM 20 GA
19	A/R	TOP WEAR PAD SHIM 16 GA
20	2	OUTER TOP WEAR PAD
21	10	LOCK STRAP
22	20	3/8-24UNFX1.00 G5 BOLT
23	A/R	SIDE WEAR PAD SHIM 20 GA
24	A/R	SIDE WEAR PAD SHIM 16 GA
25	4	OUTER WEAR PAD
26	A/R	SIDE WEAR PAD SHIM 20 GA
27	A/R	SIDE WEAR PAD SHIM 16 GA
28	2	OUTER WEAR PAD
29	6	0.12-27NPTFX0.68 LUBE FITTING