

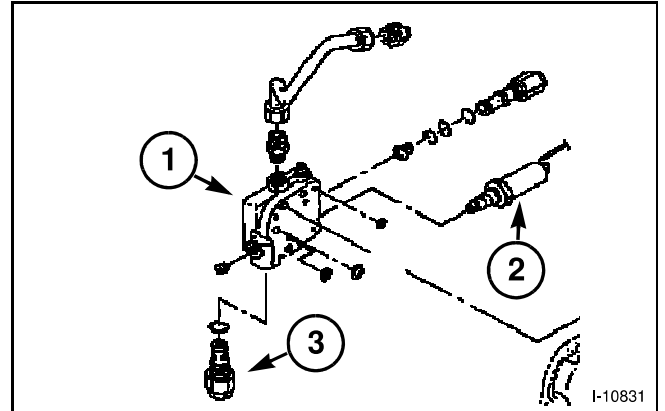
## MAIN RELIEF VALVE

### Parts and Hydraulic Diagram

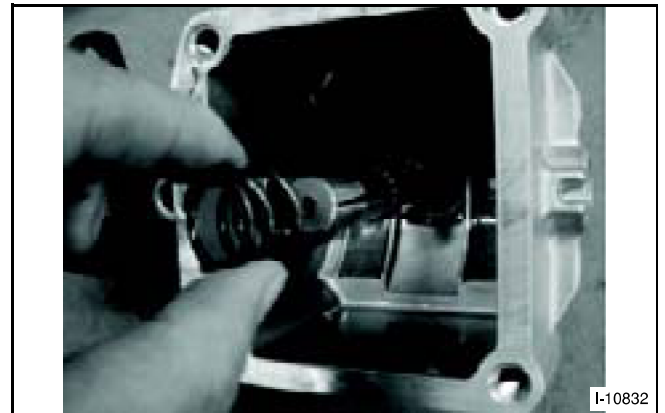
#### Synchro Version and HST Version

**FIGS. 18–19:** Valve Assembly

- (1) Valve Assembly
- (2) PTO Control valve
- (3) Main Relief Valve



**FIG. 18**

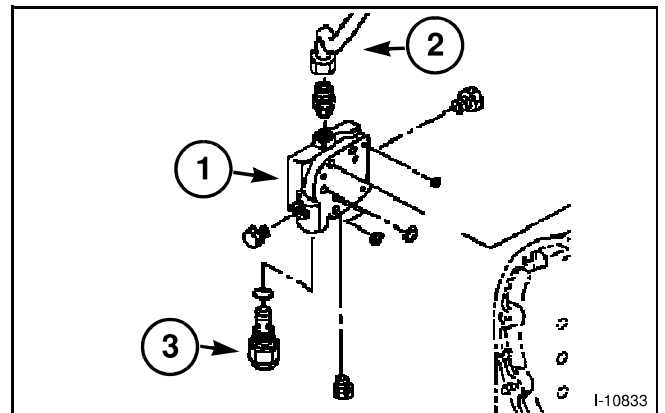


**FIG. 19**

#### Power Shuttle Version and Power Shift Version

**FIG. 20:** Valve Assembly

- (1) Valve Assembly
- (2) Rear Delivery Pipe
- (3) Main Relief Valve

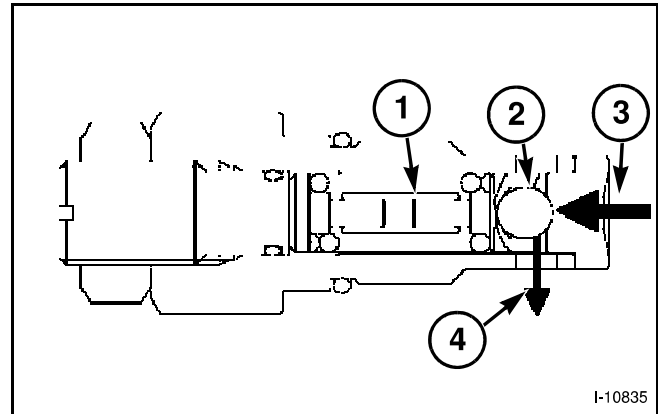


**FIG. 20**

## Component Breakdowns

**FIG. 21:** Detail View-Main relief

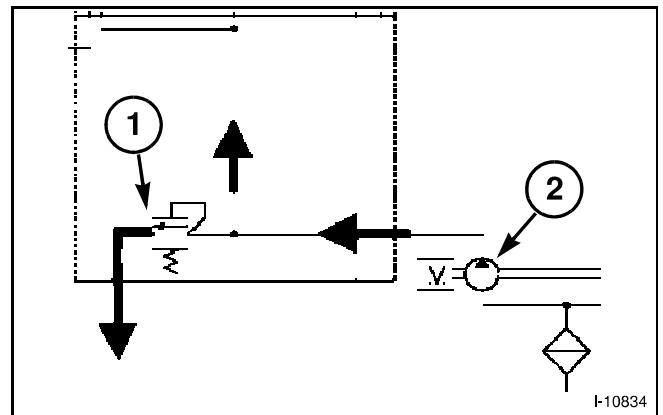
- (1) Spring
- (2) Steel Ball
- (3) In
- (4) Out (to tank)



**FIG. 21**

**FIG. 22:** Circuit- Power Shuttle and Power Shift

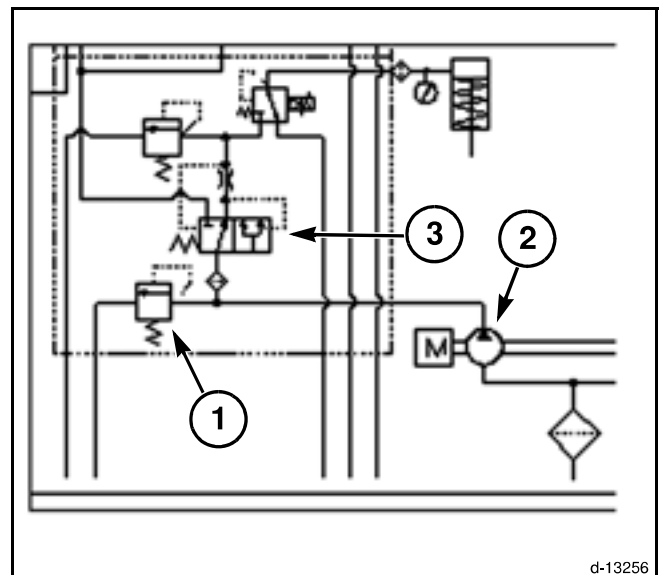
- (1) Relief Valve
- (2) Main Pump



**FIG. 22**

**FIG. 23:** Circuit - Synchro and HST

- (1) Relief Valve
- (2) Main Pump
- (3) PTO Control Valve



**FIG. 23**