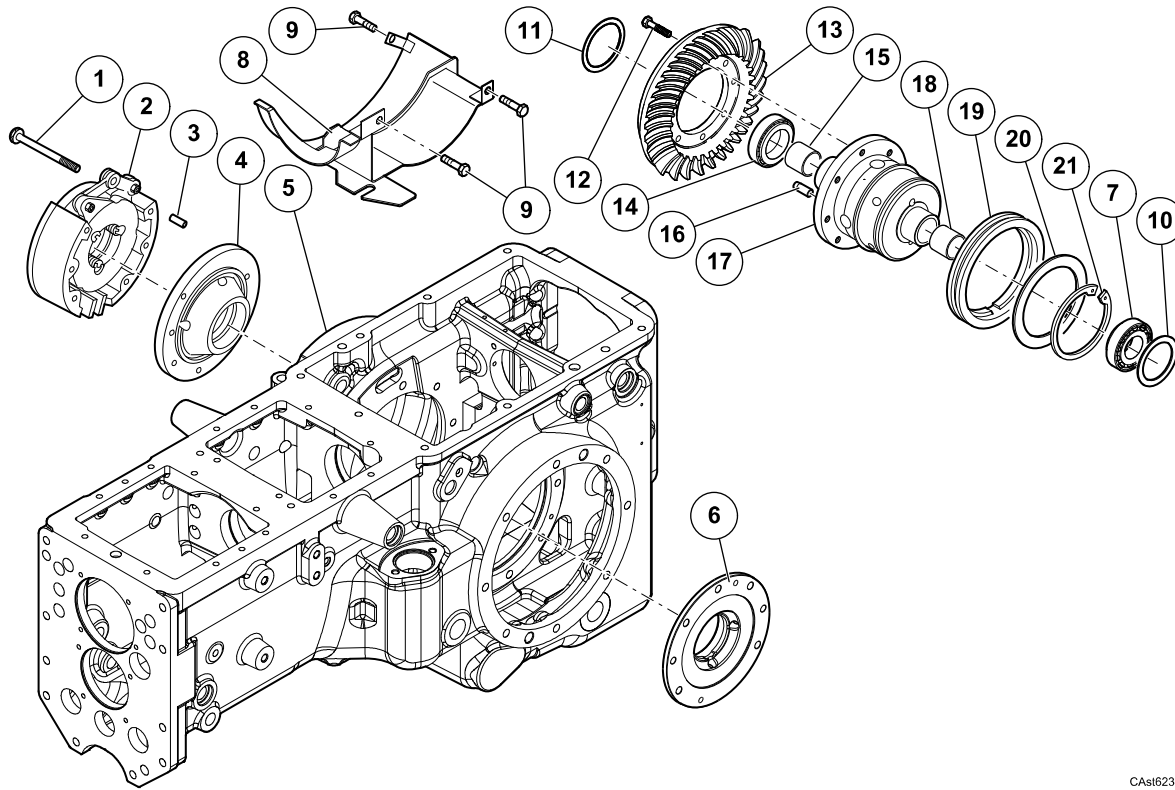


# Differential Assembly



CAst6231

**8+8  
synchro  
reverser**

**12+12  
synchro  
reverser**

**24+24  
synchro  
reverser and  
synchro splitter**

**24+24  
synchro reverser  
and power  
splitter**

**12+12  
power  
reverser**

**24+24  
power reverser  
and synchro  
splitter**

For models

1

1

1

1

1

1

# Differential Assembly

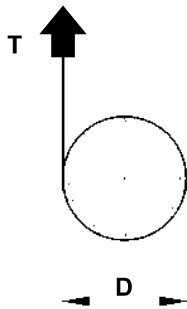
## DISASSEMBLY

1. Before starting the disassembly, use a dynamometer whose cord is wound on the pinion ring nut with diameter  $D=80$  mm to check for bearing preload. If during assembly the bearings are not changed, the expected load will have a value 40-50% lower than the expected for new bearings.

Refer to: figures 1 and 2.



Figure 1



CAst6287

Figure 2

2. Disconnect brake control.
3. Disassembly screws (1).
4. Remove brake (2).  
Refer to: section D.XX.
5. Remove flange (4).
6. Remove bearing cup (14) from flange (4).
7. Repeat the same operations from the other side.
8. Remove bearings cones (14) and (7) from differential box (17).
9. Remove screws (12) and disassemble bevel gear crown (13).
10. Remove screws (9).
11. Remove guard (8).