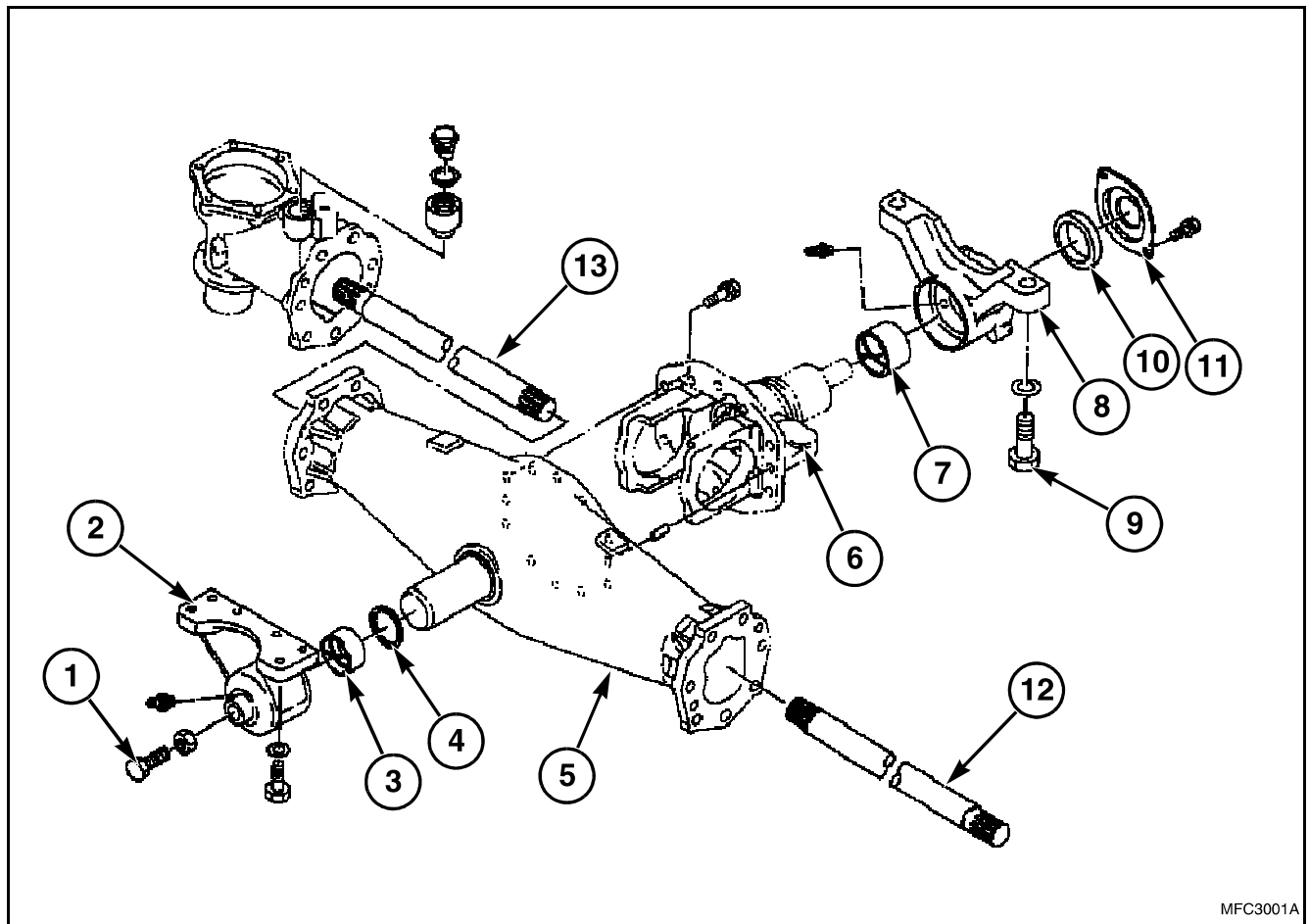


Removal and Installation



MFC3001A

FIG. 4

FIG. 4: Front Axle Component List:

1. Adjusting Bolt
2. Pivot Support
3. Bushing (55 x 60 x 50)
4. Oil Seal
5. Axle Housing
6. Bevel Gear Case Carrier
7. Bushing (65 x 70 x 44)
8. Rear Pivot Support
9. Bolt
10. Oil Seal
11. Cover
12. Axle, left-hand
13. Axle, right-hand

FRONT AXLE

Inspection

FIG. 5: Bevel Gear Housing Shaft Diameter

Measure diameter at a bushing contact point with a micrometer or vernier calipers. Standard value is 65 mm (2.559 in). If measured value is less than usable limit 64.9 mm (2.555 in), replace housing.

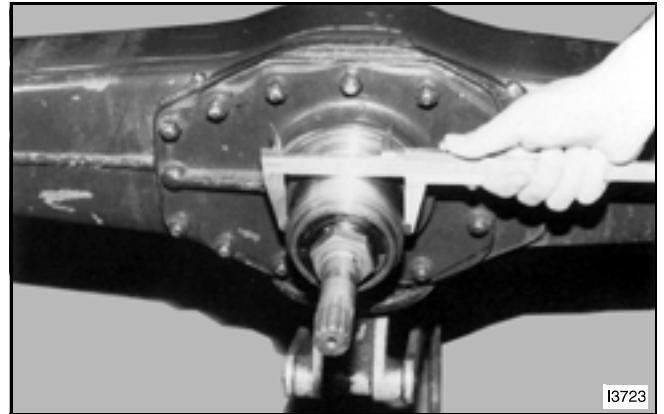


FIG. 5

FIG. 6: Bevel Case Bushing Bore

Measure bore diameter of bushing for pivot support with a cylinder gauge or vernier calipers. Standard value is 65.1 mm (2.567 in). If measured value exceeds usable limit 65.2 mm (2.562 in), replace bushing.

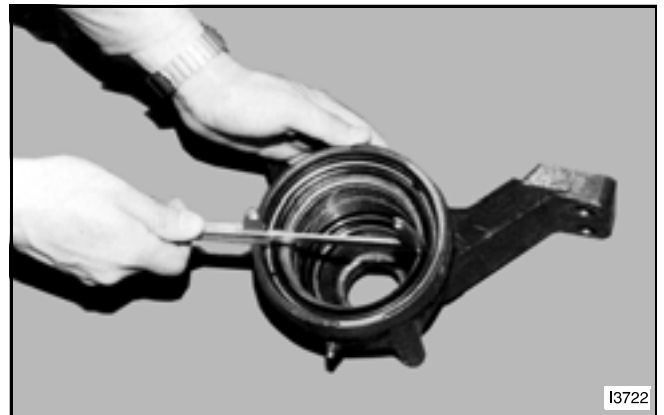


FIG. 6

FIG. 7: Front Axle Shaft Diameter

Measure diameter at a bushing contact point with a micrometer or vernier caliper. Standard value is 55 mm (2.165 in). If measured value is less than usable limit 54.9 mm (2.161 in), replace center section.



FIG. 7