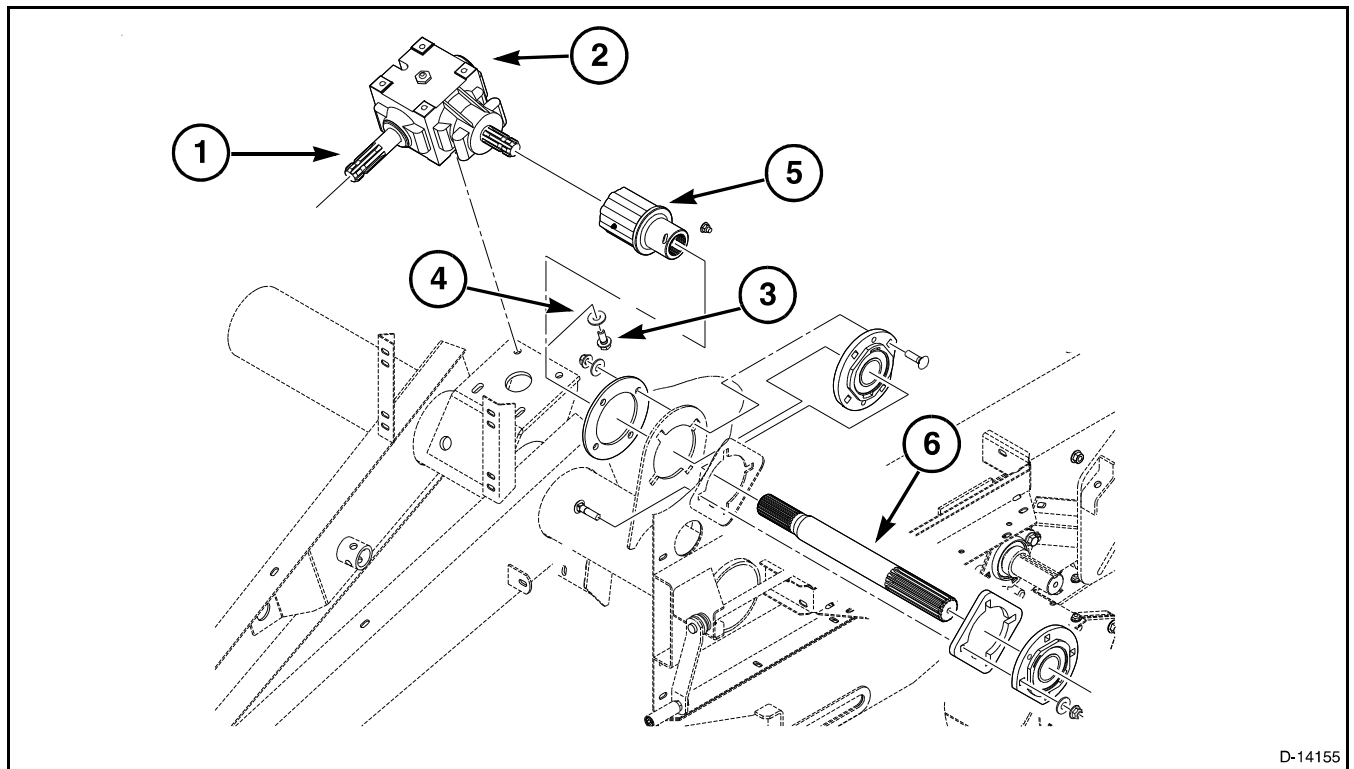


Drives

Removal



D-14155

FIG. 2

FIG. 2: Open the shield over the gearbox.

Disconnect the implement driveline from the tractor PTO shaft. Disconnect and remove the implement driveline from the baler input shaft (1) on the gearbox (2).

Support the gearbox and remove the four mounting cap screws (3) and flat washers (4) from under the gearbox.

Slide the output shaft of the gearbox from the main drive clutch (5) on the main drive shaft (6) and remove the gearbox (2) from the baler.

Remove the radial pin clutch from the starting roll shaft.

Disassembly

NOTE: The procedure to repair the slip clutch on this baler is similar to the pictures shown. There are four rows to remove instead of two as shown.

FIG. 3: Remove the snap ring (1) from the radial pin clutch.



FIG. 3

FIG. 4: Remove the plastic ring (1).

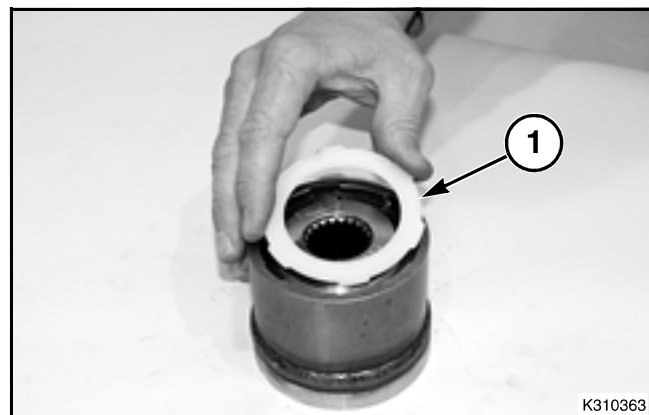


FIG. 4

FIG. 5: Remove the metal ring (1).

NOTE: Follow the procedure for a controlled release of the spring loaded pins.

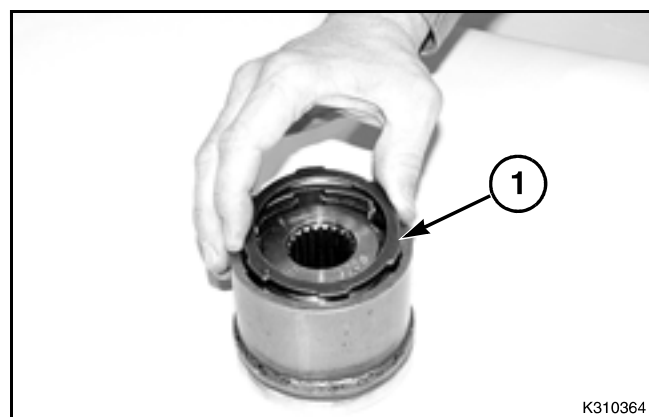


FIG. 5