

HEADER DRIVE MOTOR

General Information

The following procedures are the same for the left-hand and right-hand header drive motors for the double conditioner machine.

Components

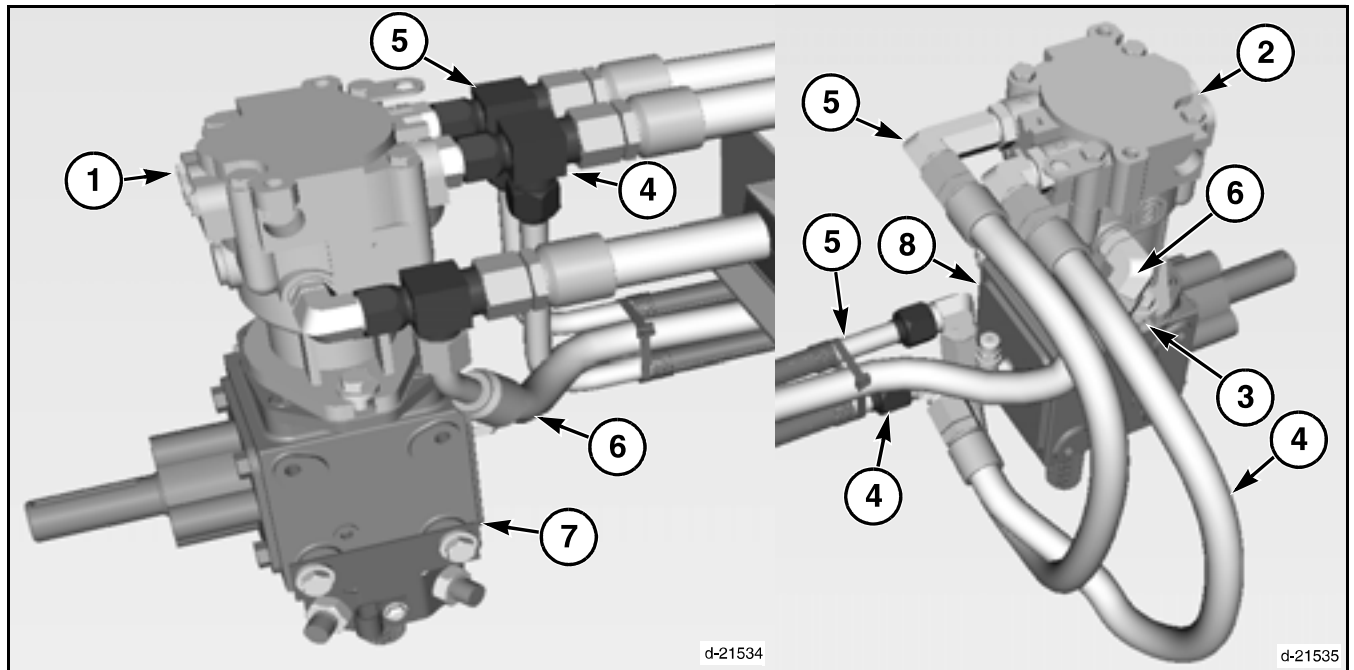


FIG. 9

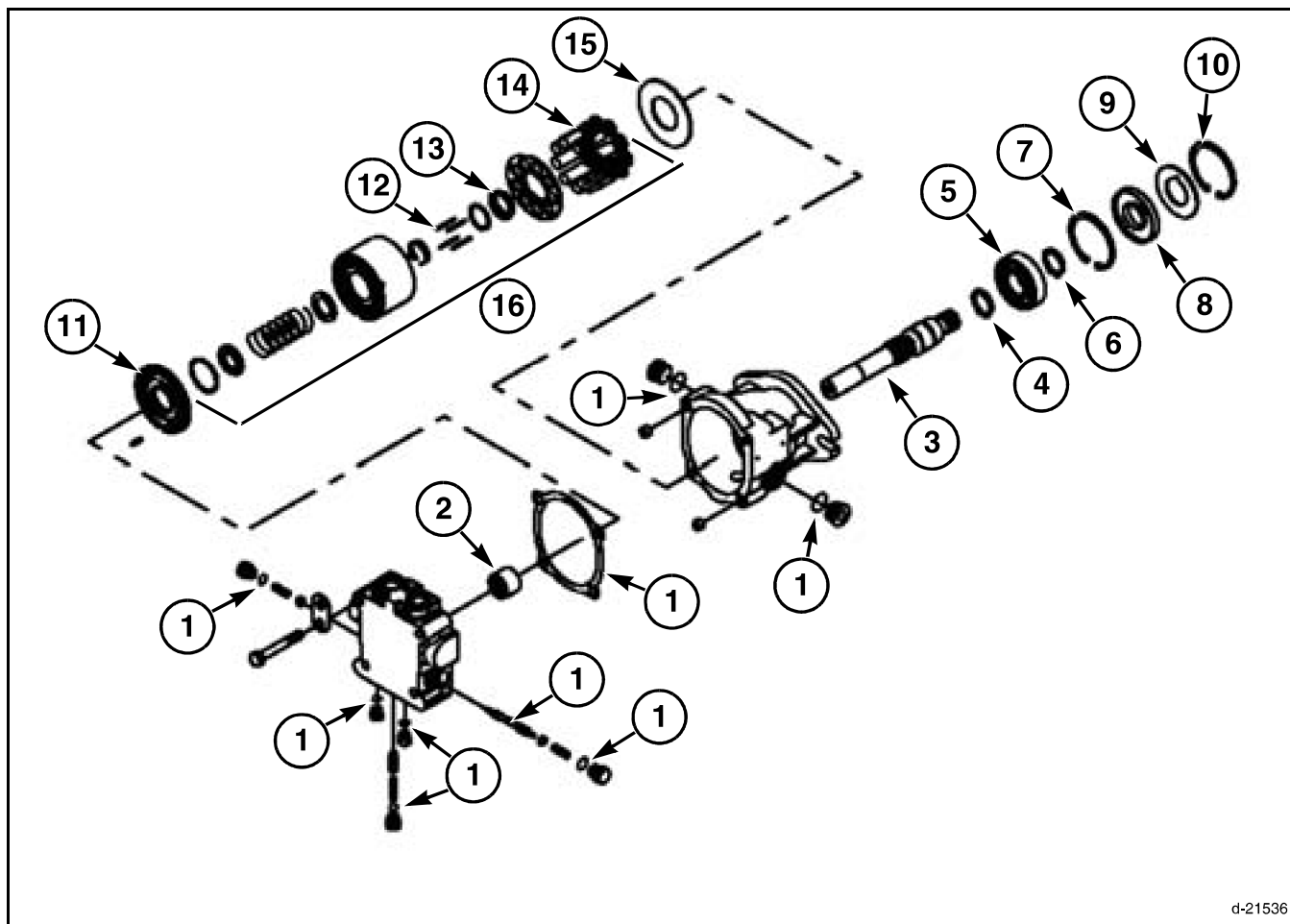
FIG. 9: Fasten identification tags to all of the hydraulic hoses and lines.

After the hoses are disconnected from the machine, plug or cap the hoses or fittings.

- (1) Header Motor - Left-Hand
- (2) Header Motor - Right-Hand
- (3) Gasket
- (4) Return Hose - Port B
- (5) Pressure Line - Port A
- (6) Case Drain Hose
- (7) Gearbox - Left-Hand
- (8) Gearbox - Right-Hand

NOTE: If the hoses are not connected to the correct ports at assembly, the header drive motor will rotate in the wrong direction and will lock up. The drive motors on a rotary header rotate in opposite directions. Make sure to fasten identification tags to the hoses and lines before removal.

Hydraulics



d-21536

FIG. 10

FIG. 10: Exploded View of Header Drive Motor

(16) *^Cylinder Block Kit

* indicates item comes in a overhaul seal kit.

*^ indicates items comes in a cylinder block kit.

- (1) * O-rings* and Gasket
- (2) Needle Bearing
- (3) Shaft
- (4) Retaining Ring
- (5) Bearing
- (6) Retaining Ring
- (7) Retaining Ring
- (8) * Shaft Seal
- (9) Support Washer
- (10) Retaining Ring
- (11) Valve Plate
- (12) Slipper Hold Down Pin
- (13) Slipper Retainer Guide
- (14) Piston Assembly
- (15) Thrust Plate