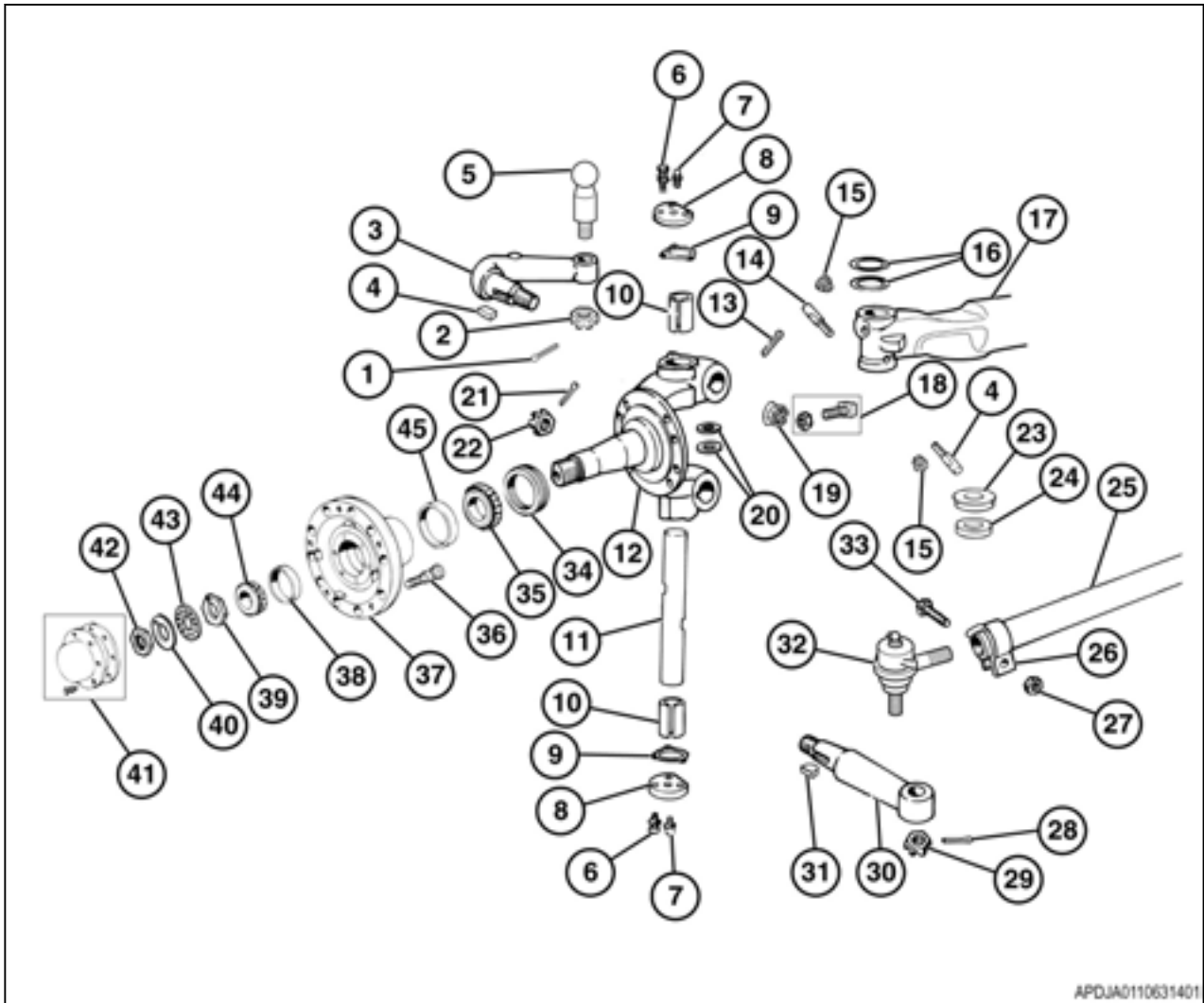


3.1 Front axle

3.1.1 Front axle introduction



Fig. 1



APDJA0110631401

Fig. 2

- | | |
|---|--|
| (1) Cotter pin | (23) Cover-type bearing seal |
| (2) Castle nut — drag link to steering arm | (24) Thrust bearing |
| (3) Steering arm | (25) Cross tube |
| (4) Key | (26) Clamp, cross tube |
| (5) Ball stud | (27) Locknut, clamp |
| (6) Bolt | (28) Cotter pin |
| (7) Grease fitting | (29) Castle nut — tie rod arm to tie rod end |
| (8) Knuckle cap — greaseable | (30) Knuckle tie rod arm |
| (9) Gasket | (31) Woodruff key |
| (10) King pin bushing — Easy Steer™ | (32) Tie rod end |
| (11) King pin | (33) Bolt, clamp |
| (12) Knuckle | (34) Hub grease seal |
| (13) Cotter pin | (35) Inner wheel bearing cone |
| (14) Threaded draw key | (36) Stud |
| (15) Nut, threaded draw key | (37) Hub |
| (16) Shims | (38) Outer wheel bearing cup |
| (17) Axle beam | (39) Adjusting nut |
| (18) 3/4-inch stop bolt and jam nut | (40) Lock washer |
| (19) Castle nut (flared base) — steering arm to knuckle | (41) Hubcap, gasket, bolt, and washer |
| (20) Seal — king pin bushing | (42) Wheel bearing nut |
| (21) Cotter pin | (43) Pierced lock ring |
| (22) Castle nut — tie rod arm to knuckle | (44) Outer wheel bearing cone |
| | (45) Inner wheel bearing cup |