

**FIG. 57:** Apply Loctite® Primer N and Loctite® 680 to the bearing contact area on the shaft (1) in the drive roller.

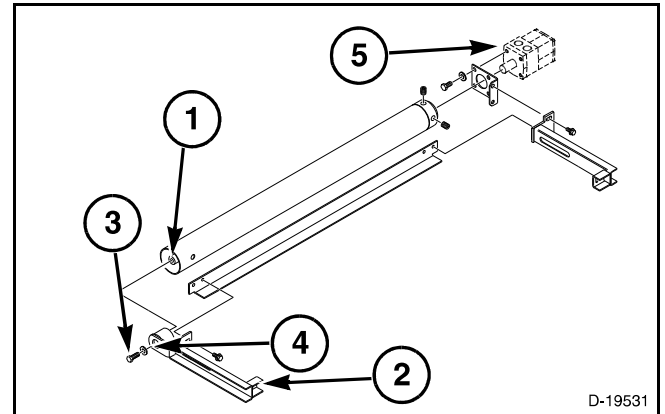
Put the drive roller into position on the header. Slide the drive roller shaft into the bearings in the front tightener (2).

Install the 3/8-16 x 1 capscrew (3) and spring washer (4).

*NOTE: The convex side of the spring washer must be toward the bolt head.*

Tighten the retaining bolt to pull the drive roller shaft into the bearing assembly.

Be sure that the drive key is in the conveyor drive motor (5) shaft. Align the key in the shaft with the keyway in the canvas driver tube. Slide the motor with the mount weldment into the canvas driver tube.

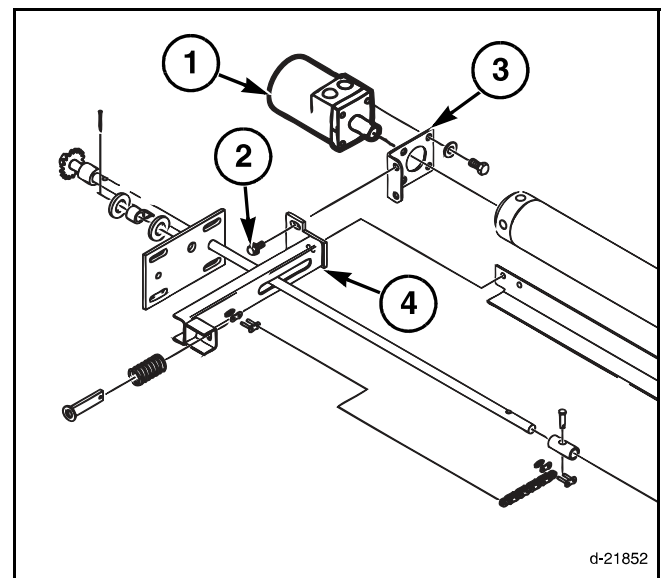


**FIG. 57**

**FIG. 58:** Install the motor (1) with the ports up and the shaft facing forward.

Install the two 3/8-16 X 3/4 inch hex washer head machine screws (2) holding the motor with the mount weldment (3) to the rear tightener (4).

Adjust the motor so the key is fully engaged in the driver tube and tighten the two machine screws.



**FIG. 58**

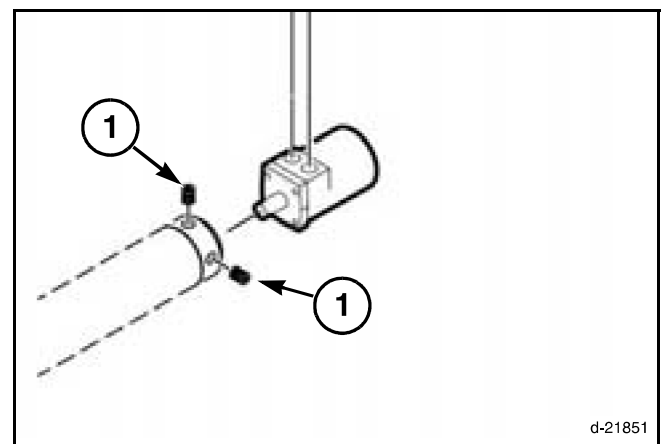
**FIG. 59:** Tighten the two 1/2-20 X 3/4 inch cup point square head set screws (1) holding the motor shaft in the canvas driver roller. Tighten the set screw on the opposite side of the key first.

Check the roller alignment. See Roller Alignment in this section.

Close the bearing removal holes on the drive roller with silicone.

Fill the hole in the front mount around the bearing retaining bolt with silicone.

After the silicon has cured, install and tighten the draper.



**FIG. 59**

**NOTES**