

19. Remove the gib key (1) from the packer drive sprocket (2).
20. Remove the sprocket.
21. Remove the hardware that fastens the pickup pivot support bracket to the strut on the left side of the mainframe.
22. Remove the carriage bolts that fasten the bearing flanges to the pickup assembly.
23. Loosen the locking collar for the pickup pivot bearing on the right-hand end of the packer crank.
24. Remove the bearing and flanges from the packer crank.
25. Drive a 10 mm wide tapered chisel (1) between the stake nut (2) and the groove (3) in the packer crank (4) to push the stake nut out of the groove.
26. Remove the stake nut from the packer crank.
27. Pull the packer drive sprocket from the splines on the packer crank.
28. Remove the machinery bushings from the packer crank.
29. Rotate the packer crank so the right journal is all the way down.
30. Connect lifting equipment to the packer crank.
31. Loosen the locking collar on the bearings at both ends of the packer crank.
32. Remove the bolts, lock washers, and nuts (1) that fasten the bearing flanges (2) to the machine.
33. Remove the loose bearing flanges.
34. Remove the bearings from the packer crank.
35. Remove the bearing flanges.
36. Move the packer crank all the way to the right.
37. Raise the left end of the packer crank all the way to the top of the opening.
38. Pull the packer crank toward the rear and out the left-hand side of the machine.

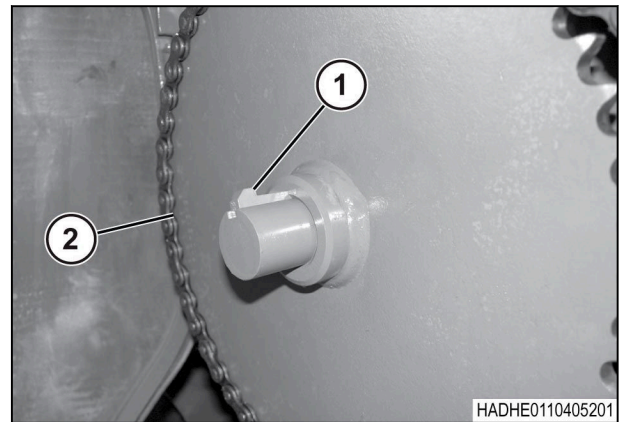


Fig. 209

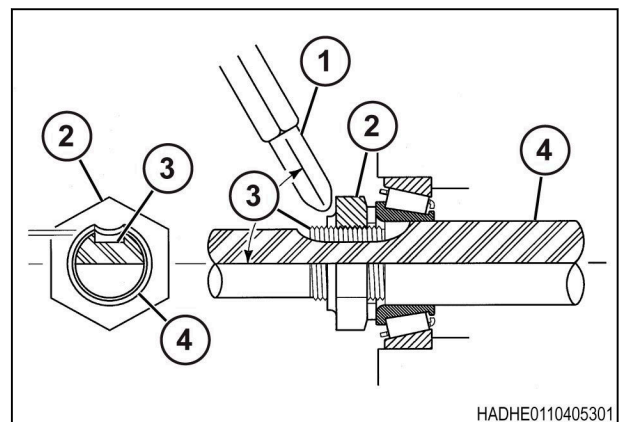


Fig. 210

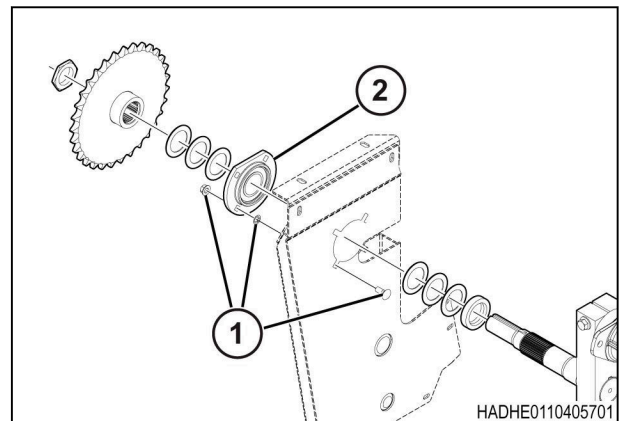


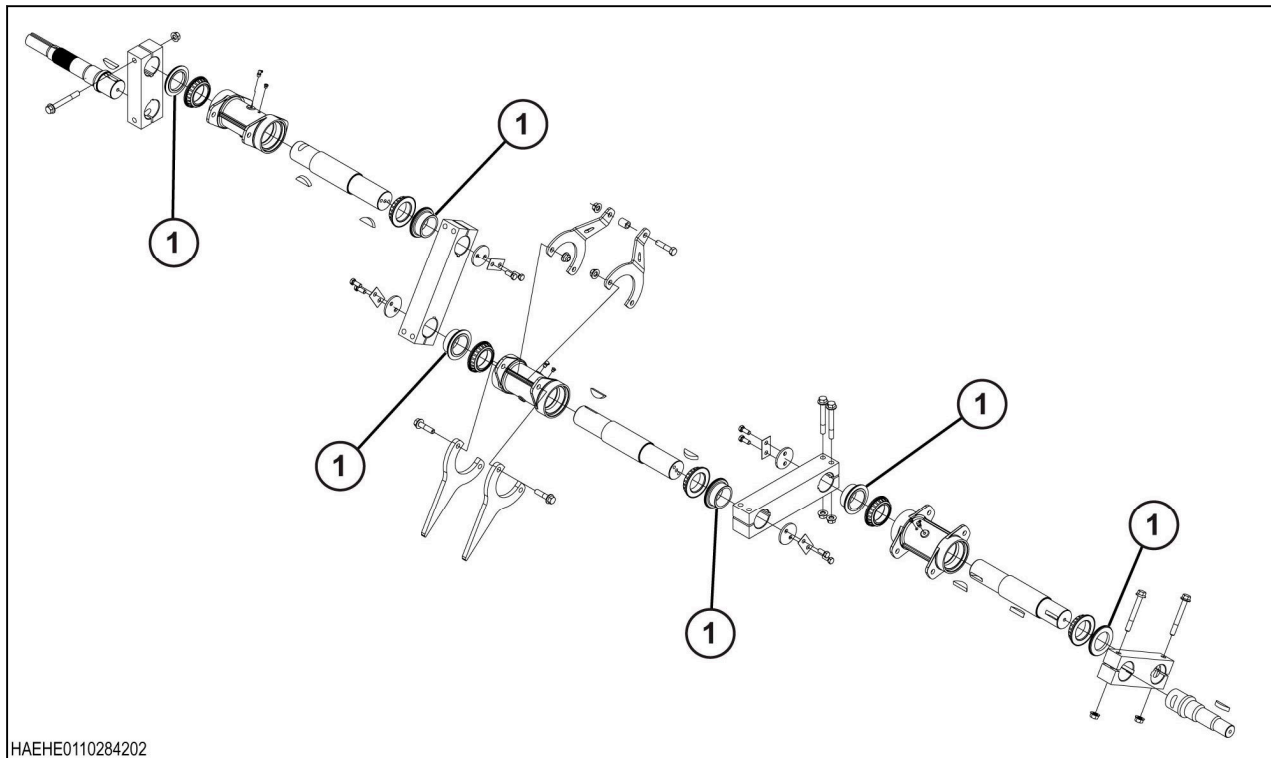
Fig. 211

## 7.4.15 Assembling the packer crank

### Before starting the procedure

Use the latest shields (1).

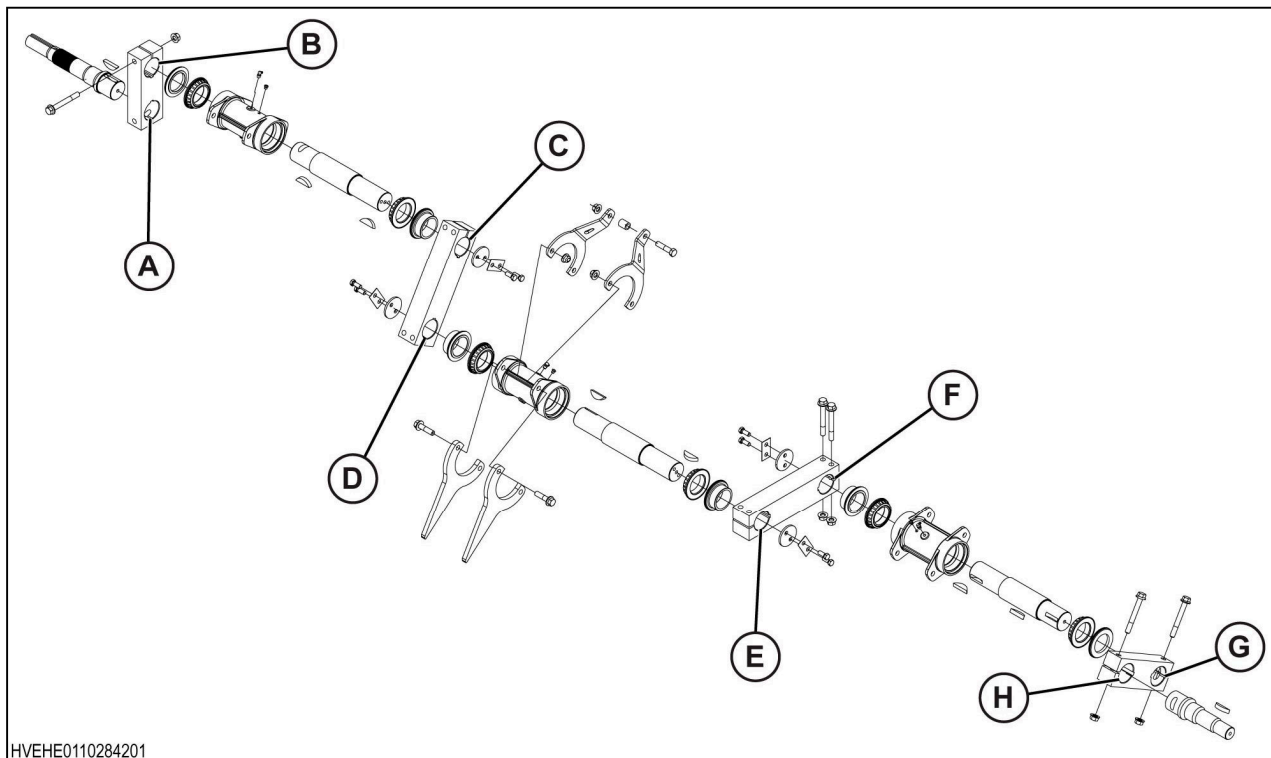
Assemble the packer crank at a vertical angle.



HAEHE0110284202

Fig. 212

**Six twine machine**



HVEHE0110284201

Fig. 213

The six twine machine has three sets of packer fingers with eight joints.