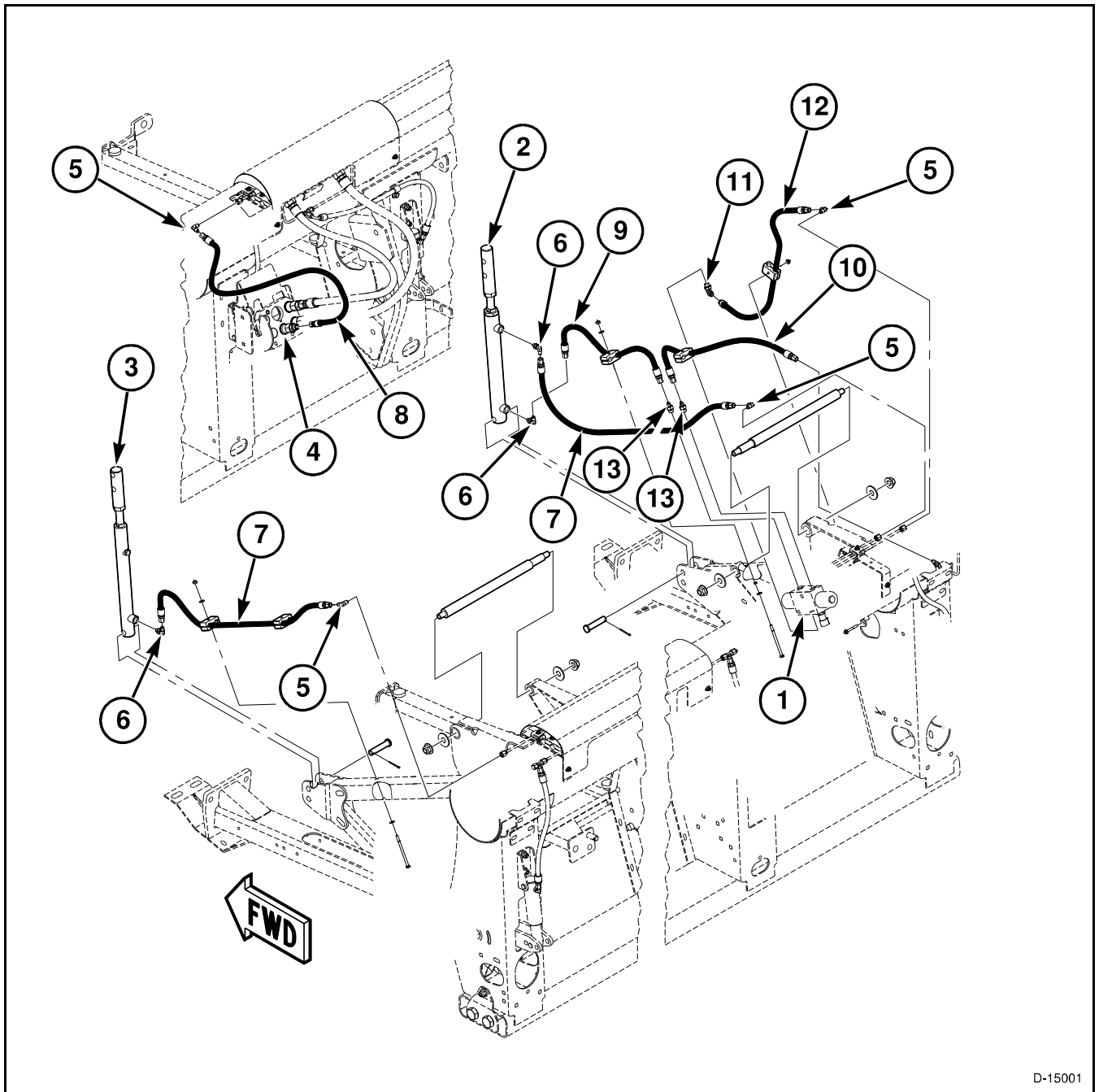


REEL LIFT HYDRAULIC SCHEMATIC



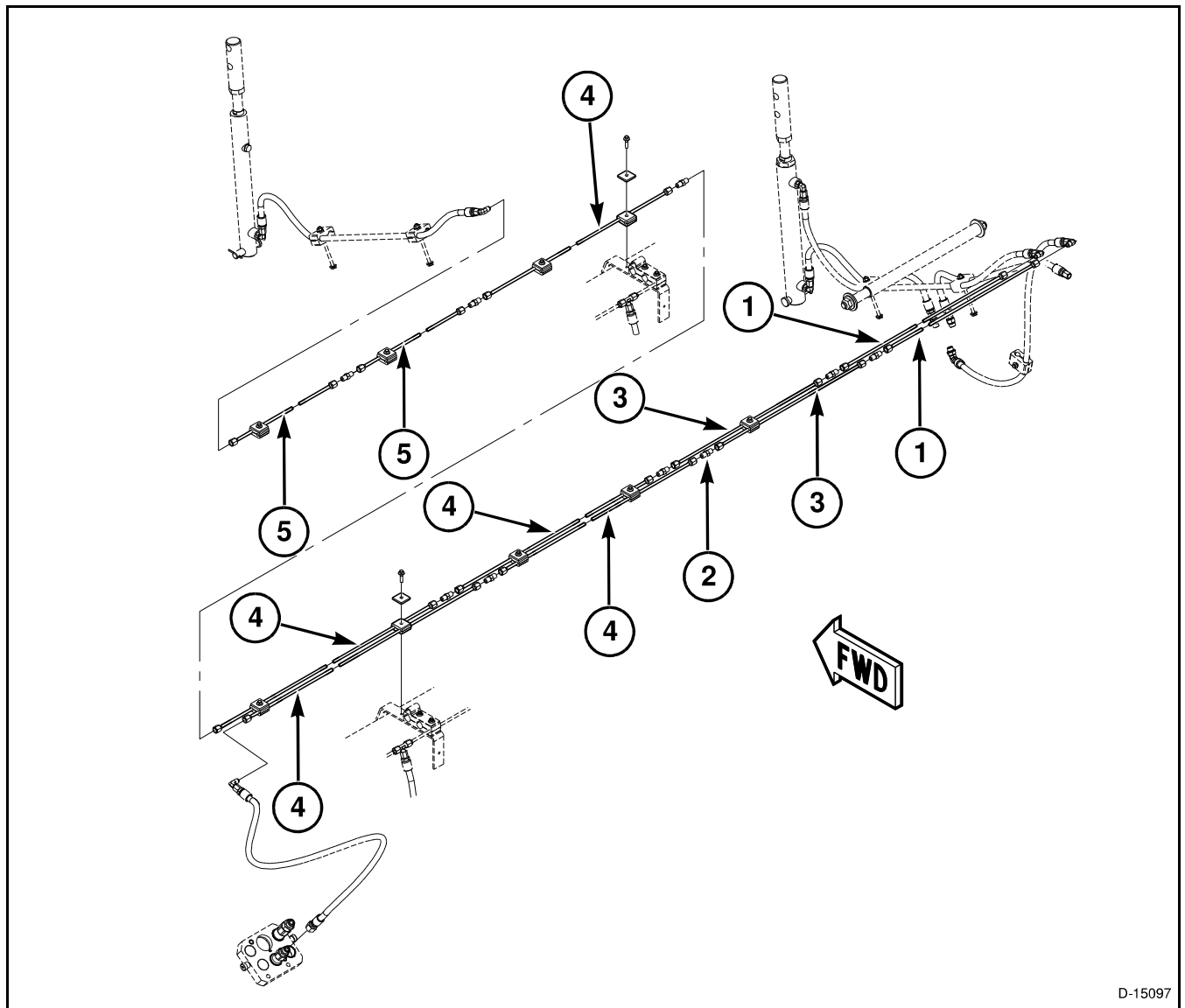
D-15001

FIG. 3

FIG. 3: Reel lift and lower hydraulic schematic.

- | | |
|-----------------------------------|---|
| (1) Float/Reel Valve Assembly | (8) Hose - 49 inch |
| (2) Reel Master Lift Cylinder | (9) Hose - 25 inch |
| (3) Reel Slave Lift Cylinder | (10) Hose - 25 inch |
| (4) Single Point Mobile Connector | (11) Fitting 7/16 JIC x 9/16 ORB O-ring |
| (5) Fitting 7/16 JIC x 7/16 JIC | (12) Hose - 30-1/2 inch |
| (6) Elbow 7/16 x 90 degree O-ring | (13) Connector 7/16-20 x 9/16-18 O-ring |
| (7) Hose - 42-1/2 inch | |

Hydraulics



D-15097

FIG. 4

FIG. 4: Reel lift hydraulic lines; 10.668 (35 ft) shown.

- (1) Tube
- (2) Union 1-1/16 - 12 JIC
- (3) Tube
- (4) Tube
- (5) Tube