

### 5.4.3 Lift limit switch

The frame height limit switch (1) is on the wheel assembly left of the center line of the machine.

The switch speeds up the lift cycle at headlands by stopping the lift cylinders part way through the stroke.

When activated, the lift limit switch energizes the lift height solenoid in port 1 of the lift valve block. When energized, the lift height solenoid blocks oil flow from entering the lift cylinders and stopping the planter from lifting more.

When the planter is lifted, the lift limit switch is open.

When the planter is lowered in the field position, the lift limit switch is closed.

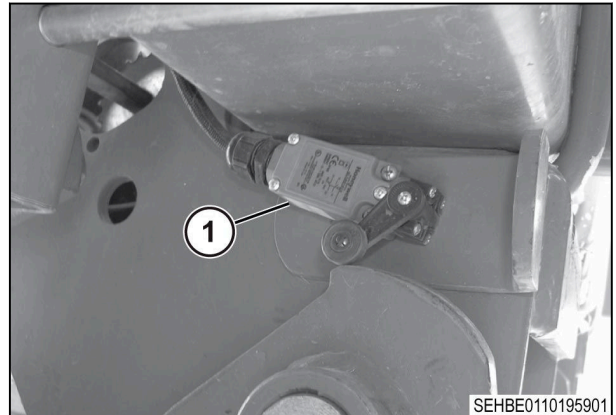


Fig. 34

#### 5.4.3.1 Remove the lift limit switch

##### Procedure

1. Disconnect the wire harness (1).
2. Remove the two screws that attach the switch to the frame (2).
3. Remove the switch (3).
4. Replace if necessary.

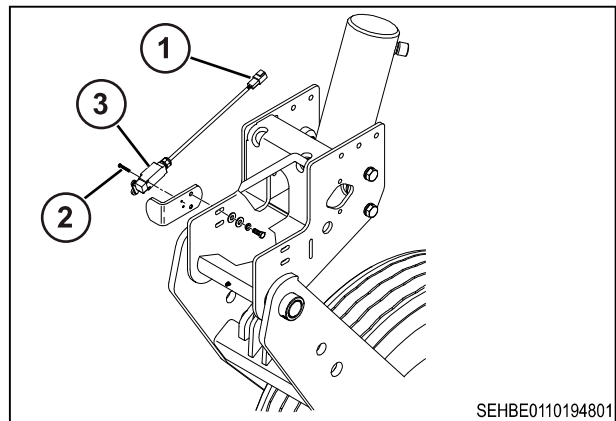


Fig. 35

#### 5.4.3.2 Install the lift limit switch

##### Procedure

1. Attach the switch to the frame. Tighten the screws to .5 Nm (.37 lbf-ft).
2. Make sure the switch is in the correct position.
3. Connect the wire harness.

### 5.4.4 Adjust the frame height limit switch

##### Procedure

1. Park the machine on a solid, level surface.
2. Apply the parking brake, stop the engine, and take the key with you.
3. Block the wheels.
4. Install the cylinder stops.

5. Electrical system

5. Loosen the capscrews (1) fastening the height limit switch to the machine.
6. Move the height limit switch to the desired position.

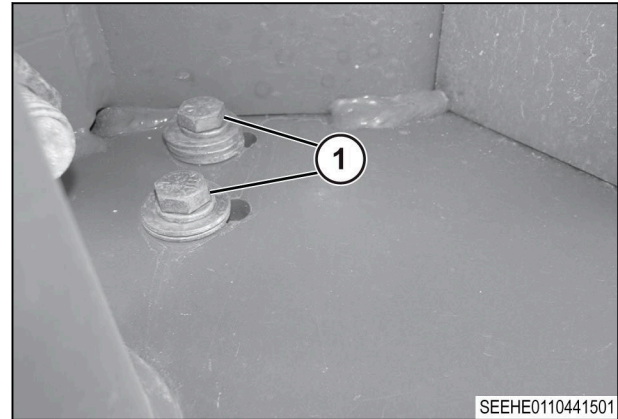


Fig. 36

Installation position of the height limit switch	Approximate row unit ground clearance
Factory installation	356 mm (14 in)
All the way forward	203 mm (8 in)
All the way rearward	508 mm (20 in)

7. Tighten the capscrews for the height limit switch.

**IMPORTANT:**

*Use shims to keep the capscrews from causing damage to the height limit switch.*

**5.4.5 Marker position switch**

As the frame is folded, the marker position switch opens, disconnecting the marker lift / lower circuit. When the frame is unfolded, the switch is closed and the marker can operate.

The position switch is on the frame of the hitch behind two panels (1) that are on each side of the frame.

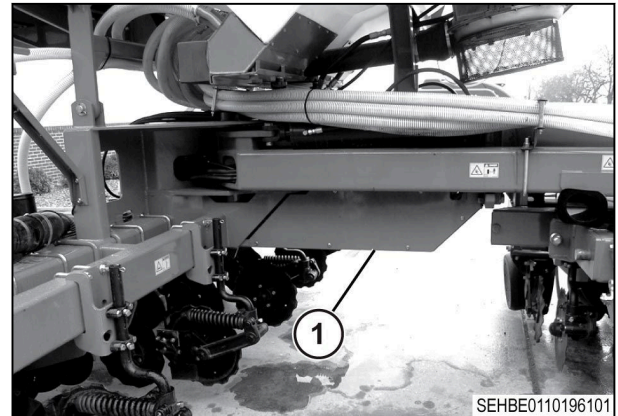


Fig. 37