

2.3 Header drive gearbox

2.3.1 Header drive gearbox components

Left header drive and gearbox assembly

1. Fixed hydraulic motor
2. Sheave - Gearbox header drive
3. Gearbox - Header drive

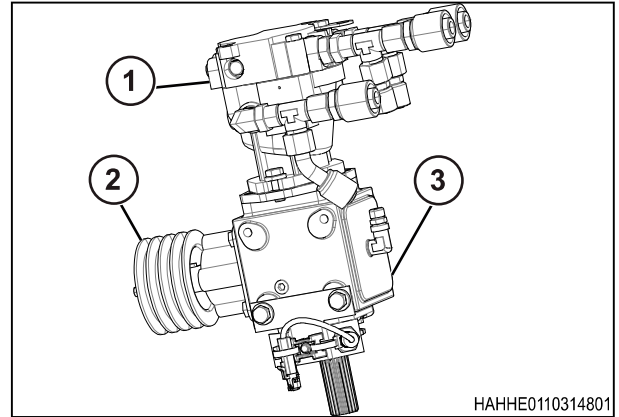


Fig. 7

Header gearbox components

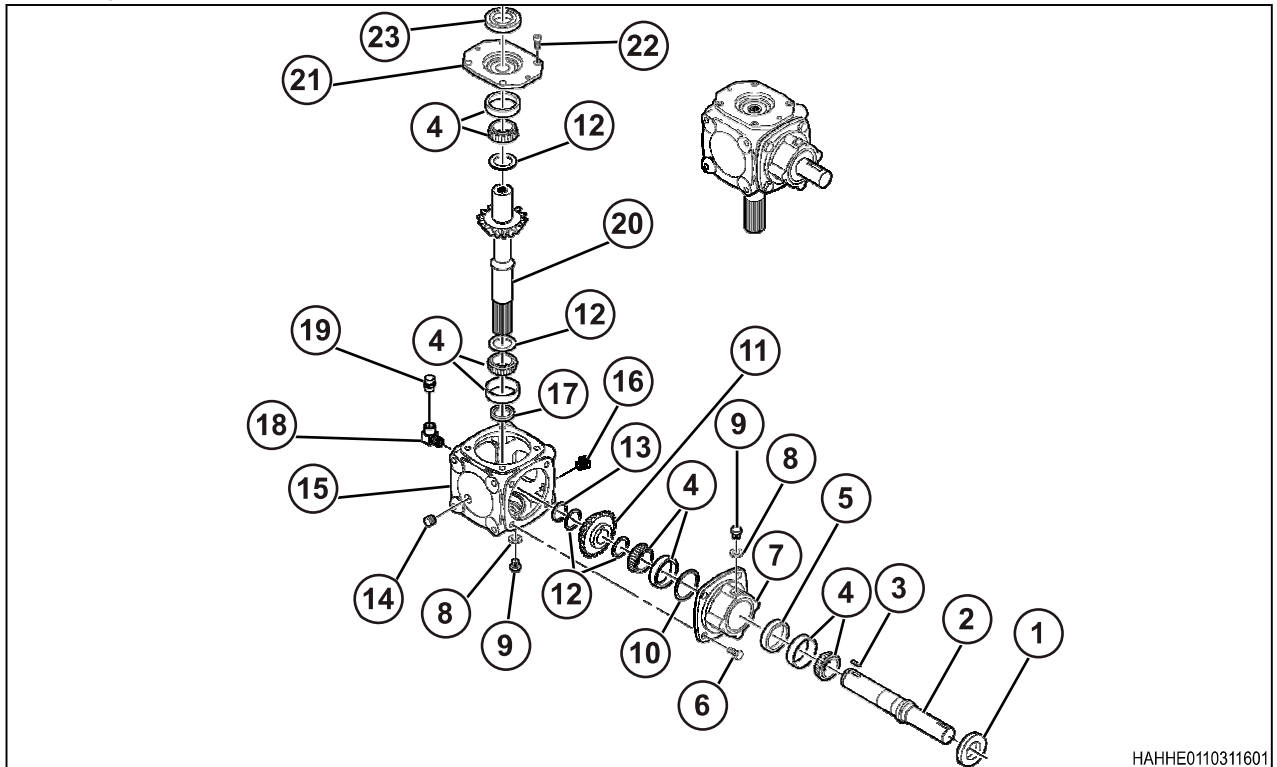


Fig. 8

- | | |
|---|---|
| (1) Seal | (11) Crown gear, 19 tooth |
| (2) Output shaft | (12) Shims, 48 x 35.3 mm (1-7/8 x 1-3/8 in) |
| (3) Key | (13) Snap ring |
| (4) Tapered bearing assembly | (14) Plug |
| (5) Spacer | (15) Housing |
| (6) Cap screw | (16) Sight glass |
| (7) Extension | (17) Seal |
| (8) Copper washer | (18) Elbow |
| (9) Cap screw | (19) Breather |
| (10) Shims, 71.7 x 60.3 mm (2-7/8 x 2-3/8 in) | (20) Pinion shaft |

2. Drive system

- (21) Motor flange
- (22) Cap screw

- (23) Seal

2.3.2 Special tools (header drive gearbox)

Use a dial indicator lever to examine the backlash on the output shaft.

Parts Necessary:

- Pipe (1): 25 mm (1 in) long, 31.75 mm (1-1/4 in) inside diameter
- Lever (2): 25 mm (1 in) long, 31.75 mm (1-1/4 in) high
- Bolt (3)

Weld the lever to the pipe.

Drill and tap a hole for the bolt 90 degrees from the lever.

Put a mark at a distance (A) of 47.5 mm (1-7/8 in) from the center of the pipe.

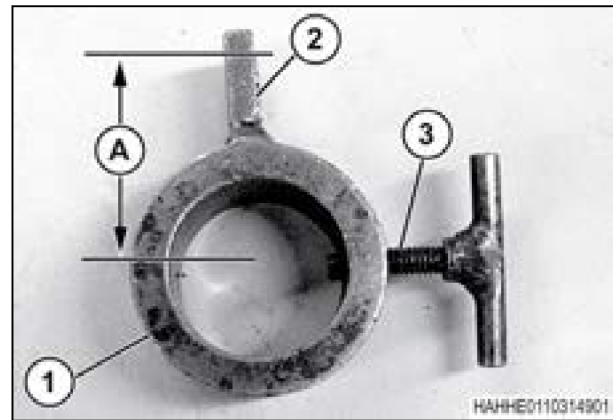


Fig. 9

2.3.3 Remove the header drive gearbox

Procedure

1. Remove the two flange screws and flange top lock nuts (1) that attach the left deck support (2) to the left panel weldment (3).
2. Remove the left panel weldment from the machine.
3. Remove the flange screws and flange top lock nuts that attach the left panel weldment (1).
4. Put the left panel weldment to a location that will let you remove the hydraulic motor.
5. To get the drive sheave on the gearbox, remove the three washer head screws that hold the cover plate (2).

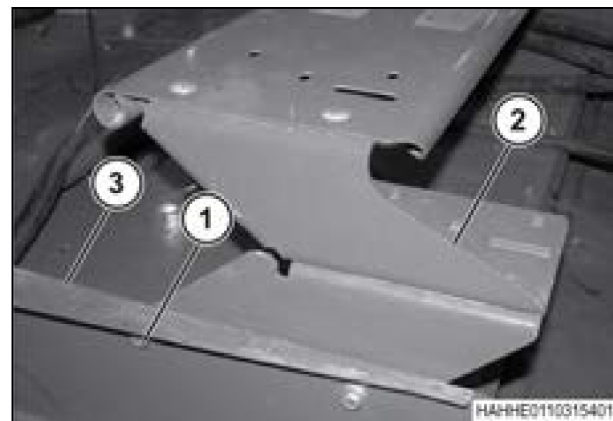


Fig. 10

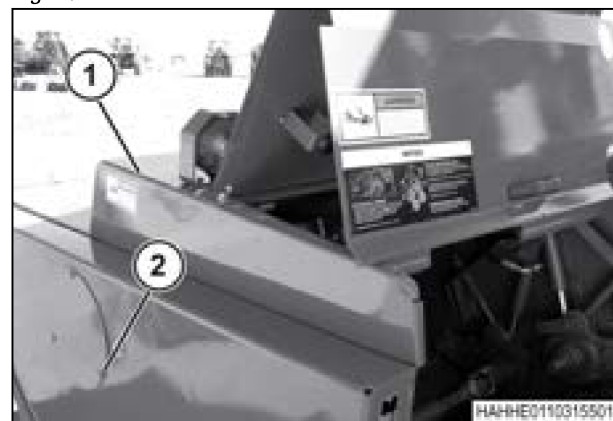


Fig. 11