

## 7.4 Stuffer arm

### 7.4.1 Remove the stuffer arm

#### Procedure

1. Park the machine on a solid level surface. Stop the engine, apply the park brake, and take the key with you.
2. Disconnect the implement driveline from the tractor.
3. Check the timing to make sure the knotter drive and the stuffer drive timing is correct.
4. Put a board under the tips of the stuffer fingers.
5. Remove the three bolts (1) that fasten one end of the stuffer finger bar (2) to the stuffer arm (3).
6. Have another person hold the stuffer finger bar at the unfastened end.
7. Remove the bolts that fasten the other end of the stuffer finger bar to the stuffer arm.
8. Remove the stuffer finger bar.

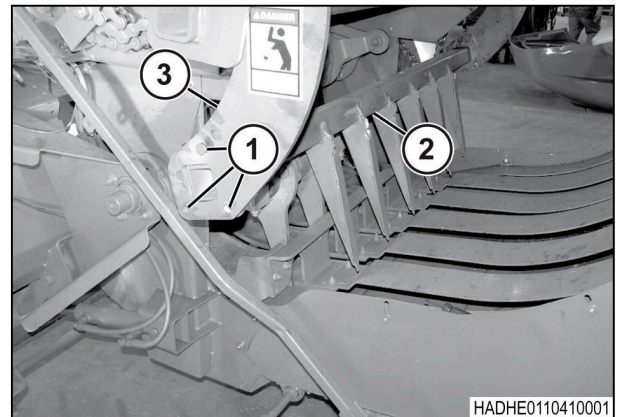


Fig. 22

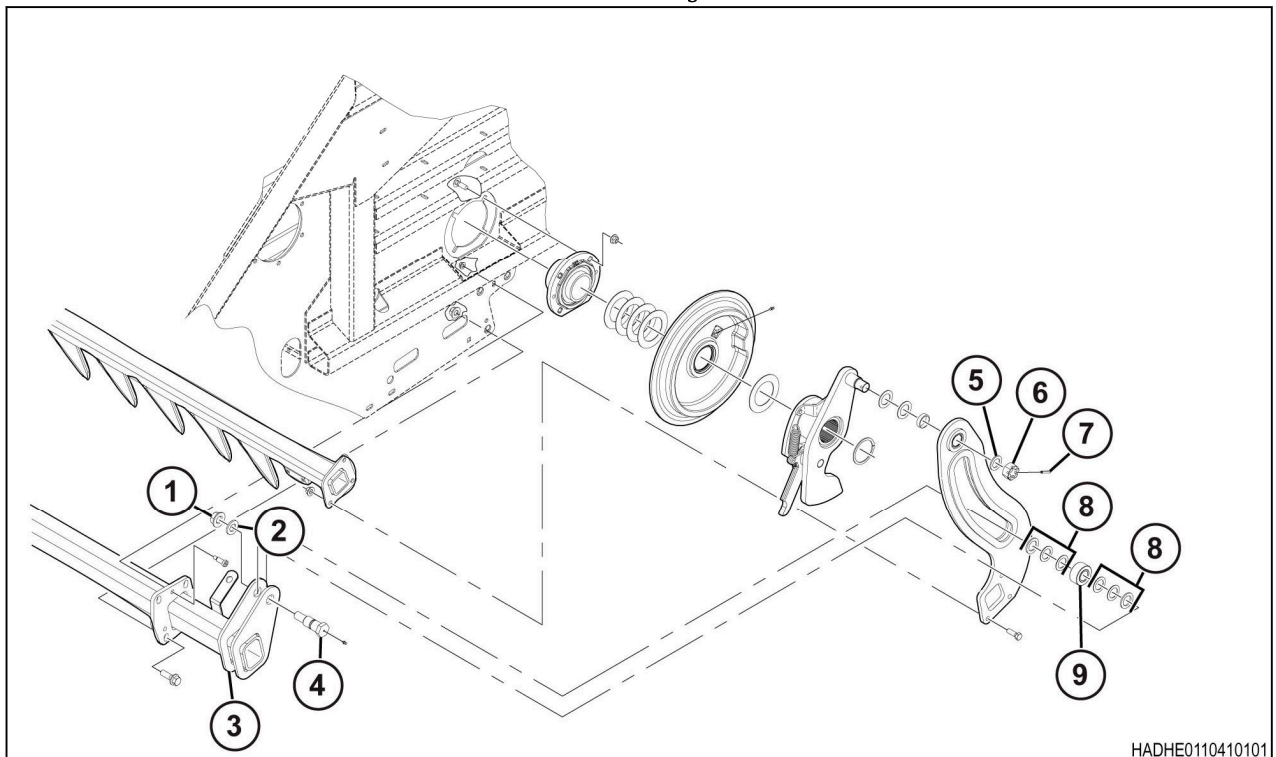


Fig. 23

9. Remove the roll pin (7), the nut (6), and the machinery bushing (5) from the stuffer arm crank pivot.
10. Loosen the special bolt (4) that fastens the stuffer arm to the cam roller support (3).
11. Make a note of the bushings (8) on both sides of the bearing (9).

12. Remove the special bolt, the lock nut (1), the washer (2), the machinery bushings (8), and the bearing (9).
13. Remove the stuffer arm (1), the spacer (2), and the machinery bushings (3) from the stuffer arm crank pivot (4).

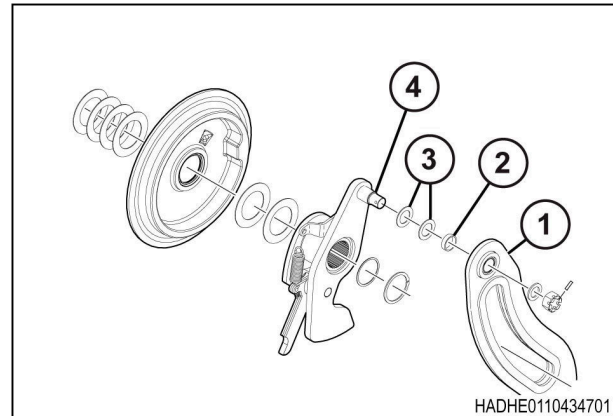


Fig. 24

### 7.4.2 Install the stuffer arm

#### Procedure

1. Install the machinery bushing (1), the spacer (2), the stuffer arm (3), the machinery bushing (4) and the nut (5). Do not tighten at this time.
2. Install machinery bushings as necessary to center the stuffer arm on the bearing (6).
3. Tighten the nut (5) and install the roll pin (7).
4. Install machinery bushings (8) as necessary to center the bearing (9) between the mounting ears (10) of the cam roller support.
5. Install the special bolt (11), the washer (12), and the lock nut (13).
6. Tighten the lock nut (13) to 360 Nm.
7. With the stuffer arms all the way forward, put a board on top of the stuffer chute.
8. Put the stuffer fingers on a board.
9. Fasten the stuffer finger bar to the stuffer arms with three bolts in each stuffer arm.
10. Adjust the clutch.
11. Check the timing.

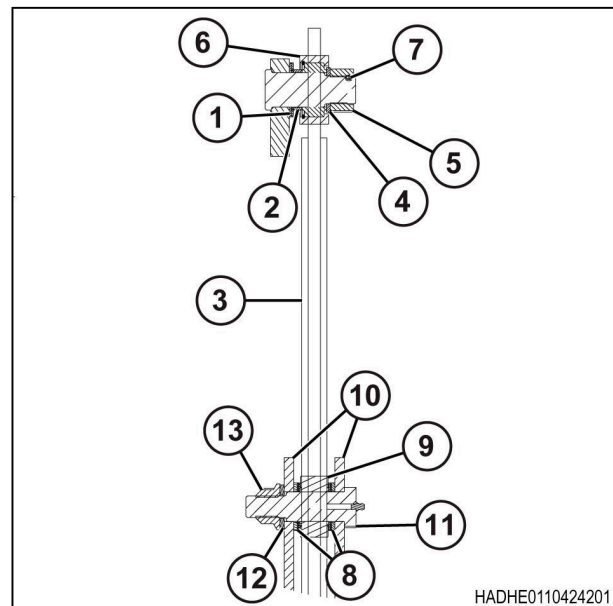


Fig. 25