

3. Hydraulic system

10. Remove the cap screws (1) and the washers.
11. Remove the upper (2) and lower (3) pin.
12. Remove the mounts (4) and the cylinder assembly (5) out of the wheel lift arm.
13. Separate the mounts.
14. Remove the cylinder.

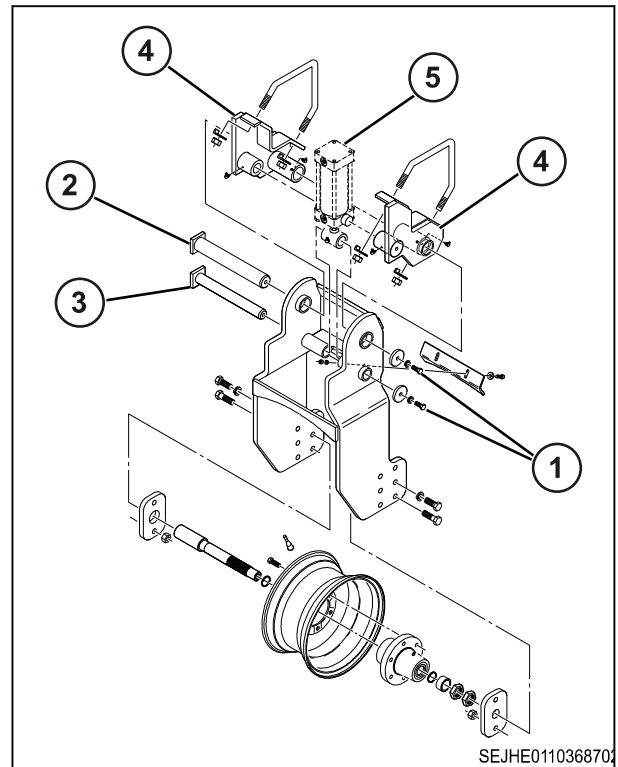


Fig. 53

**3.12.3 Install the lift cylinder**

**Procedure**

1. Install the cylinder (1) into the mounts (2).
2. Install the cylinder and the mount assembly into the wheel lift arm.
3. Line up the holes of the mounts with the wheel lift arm.
4. Install the upper pin (3) and lower pin (4) through the wheel lift arms.
5. Install the washers and the cap screws (5).
6. Attach the hydraulic hoses to the correct ports.
7. Bleed the air from the cylinder by extending and retracting the cylinder rod several times.

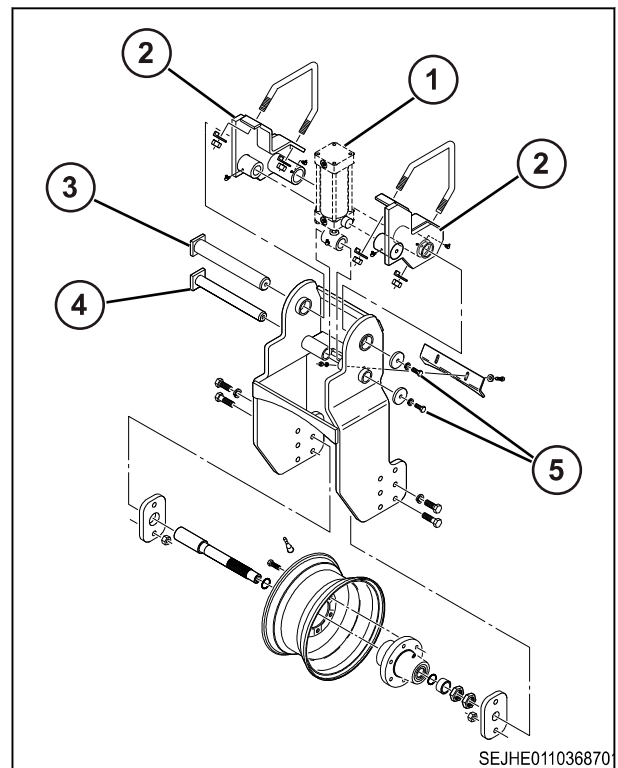


Fig. 54

8. Put grease into the grease fittings (1).

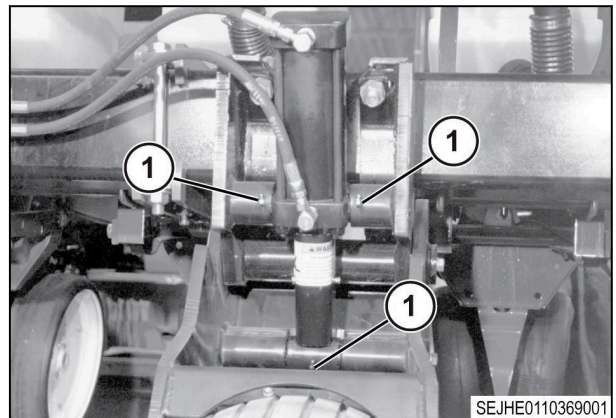


Fig. 55

### 3.12.4 Disassemble the lift cylinder

Contain all fluids during inspection, maintenance, testing, adjustment, and repair of the machine. Before opening or disassembling any component containing fluids, prepare to contain fluids by having the correct containers available. Discard fluids according to local regulations and laws.

#### Procedure

1. Clean the external side of the cylinder assembly.
2. Put the cylinder barrel in a bench vise. Make sure the hose ports point down.
3. Do not over tighten the vise and distort the cylinder barrel.
4. Remove the hydraulic fittings from the two ports of the cylinder.
- 5.
6. Retract and extend the cylinder rod by hand until all oil is drained from the cylinder barrel.

7. Remove the tie rod nuts (1).
8. Remove the tie rods (2).
9. Remove the base end (3).
10. Move the cylinder rod assembly out of the cylinder barrel.

**IMPORTANT:**

*Do not clamp the chromed finished area of the cylinder rod in the vice.*

11. Remove the locknut (4) from the cylinder rod.
12. Remove the piston (5).
13. Remove the head (6).
14. Remove and discard the seals and O-rings from the cylinder rod, the head, and the piston.
15. Clean and dry all of the cylinder parts.

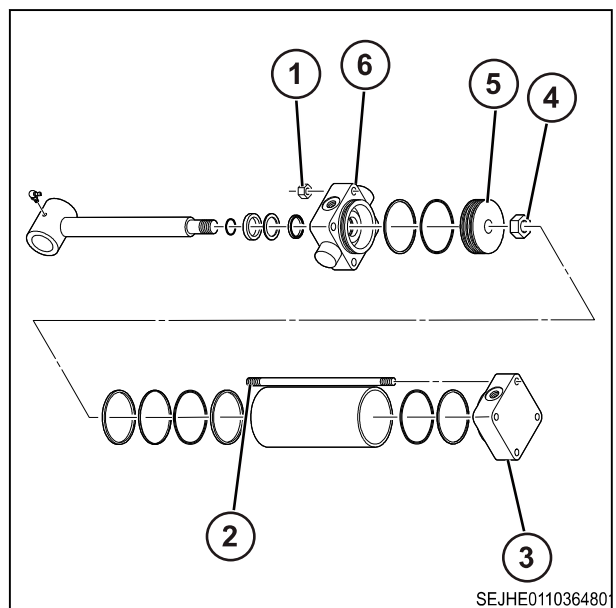


Fig. 56