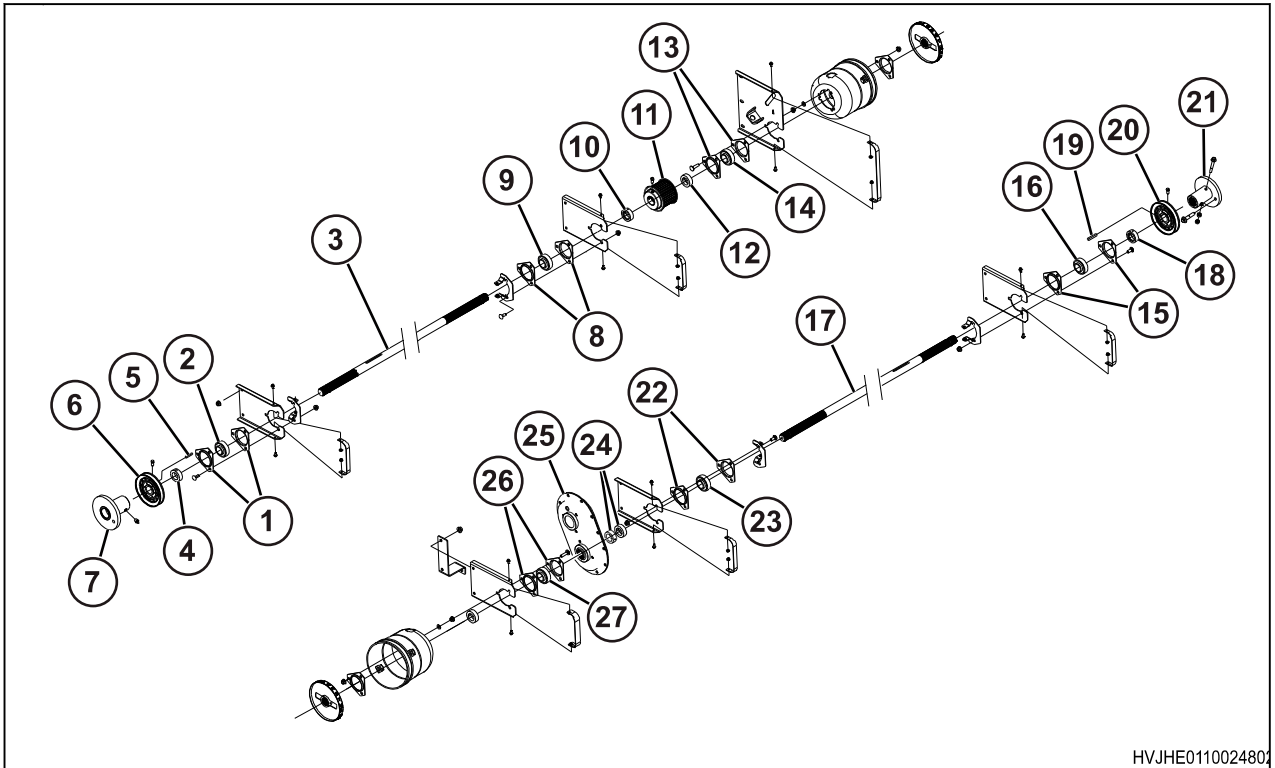


4.2.3 Assemble the primary draper drive

Procedure



HVJHE011002480

Fig. 36

1. Put the bearing flanges (1) and bearing (2) into position on the right drive shaft (3).
2. Put the lock collar (4) into position.
3. Put the key (5) and sheave (6) into position.
4. Put the hub (7) into position.
5. Put the bearing flanges (8) and bearing (9) into position.
6. Put the lock collar (10) into position.
7. Put the drive sprocket (11) into position.
8. Put the lock collar (12) into position.
9. Put the bearing flanges (13) and bearing (14) into position.
10. Put the bearing flanges (15) and bearing (16) into position on the left drive shaft (17).
11. Put the lock collar (18) into position.
12. Put the key (19) and sheave (20) into position.
13. Put the hub (21) into position.
14. Put the bearing flanges (22) and bearing (23) into position.
15. Put the lock collars (24) into position.
16. Put the gearbox (25) into position.
17. Put the bearing flanges (26) and bearing (27) into position.

4.2.4 Install the primary draper drive

Procedure

1. If the header is not on a machine, put the header on a machine.
2. Park the machine on a solid, level surface.
3. Raise the header all the way up.
4. Apply the parking brake, stop the engine, and take the key with you.
5. Engage all the cylinder stops.
6. Install the drive shaft (1) as an assembly. Make sure the drive belts are on the drive shaft assembly before installation.
7. Put the brackets (2) for the drive shaft into position.
8. Install the gap covers (3).
9. Install, but do not tighten the bearing flange hardware (4).
10. Turn the drive shaft ten times and then tighten the bearing flange hardware.
11. Install but do not tighten the bearing lock collars (5).
12. Put the drive shaft (1) a distance (A) of 110 mm to 114 mm (4.31 in to 4.50 in) from the bearing bracket (2).
13. Tighten all the bearing lock collars.
14. Repeat for the other drive shaft assembly.

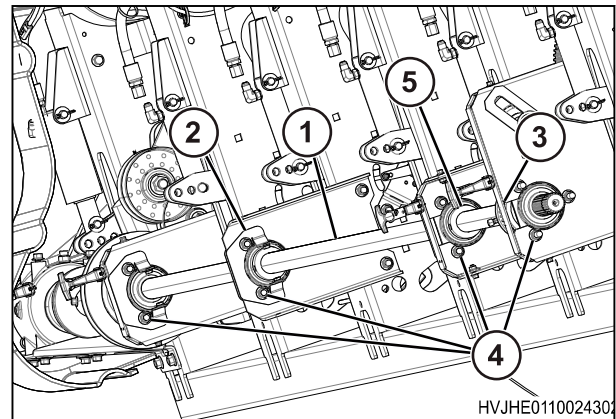


Fig. 37

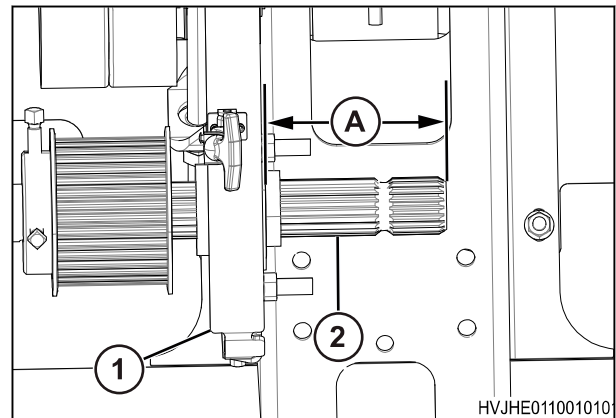


Fig. 38

15. Retract the servo (1) and install the draper drive belt (2).
16. If necessary, repeat for the draper drive belt on the other end of the machine.

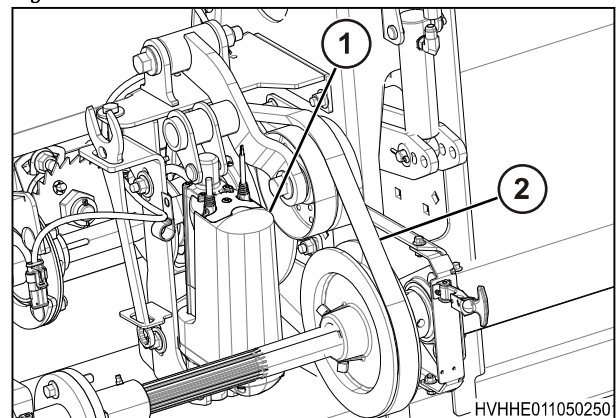


Fig. 39