

Display functions

On-board diagnosis

Menu 3 - Display of the analogue inputs (1) (3_ In A)

These menus show the voltages of the hydraulic potentiometers (3) in V and the current of the proportional valve for lowering the main lift. If they function correctly, these are values between 0 and 9.99V and 0-600mA for the current. When one of the functions is selected, the value changes. If the corresponding functions are not selected, a value between minimum and maximum is displayed (2).

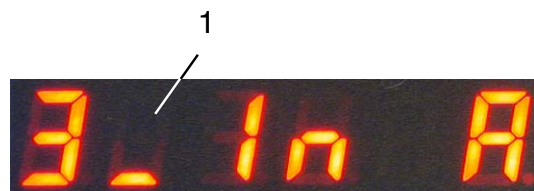
Submenus and examples of values (maximum and minimum):

Men.	Potentiomet.	U (V)	Potentiomet.	U (V)	+/- (V)
30	Lowering	1,97	Lifting	7,68	0,5
31	Reaching LS	2,06	Reaching DE	7,87	0,5
32	Tilting LS	2,12	Tilting DE	7,51	0,5
33	Side left	2,11	Side right	7,77	0,5
		I (mA)	typical (mA)	I (mA)	
34	Lower. valve	0	200-600	999	

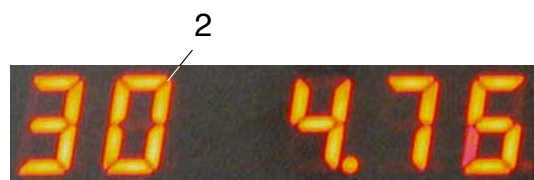
Remark: You can switch over between the menus as described under "Starting diagnosis, Menu selection". This menu is only for diagnosis. No changes can be made here.

Menu 4 - vehicle type (4_FtyP)

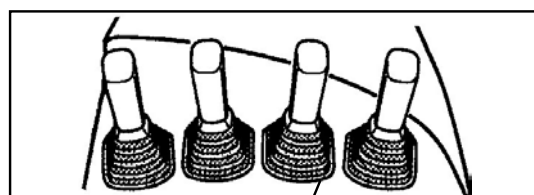
The vehicle type is shown here (4), e.g. "40 14" (5) if the vehicle has a load-bearing capacity of 1.4 tonnes. There are no other submenus.



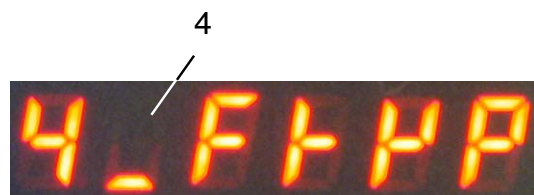
40988



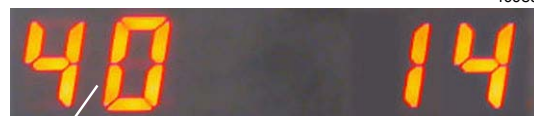
40950



10133



40989



40951

Display functions

On-board diagnosis

Menu 5 - Display of the software versions (1) (5_SoFt)

Menu point	Software
5A	Display
5L	LAS main processor
5L_	LAS monitoring processor
5E	ELK main processor, operation
5E_	ELK monitoring processor
5F	FPS-SR main processor, operation
5F_	FPS-UE monitoring processor
5UF	Converter, travel, main processor
5UP	Converter, pump, main processor



40990



40952

Remark: You can switch over between the menus as described under "Starting diagnosis, Menu selection". This menu is only for diagnosis. No changes can be made here.