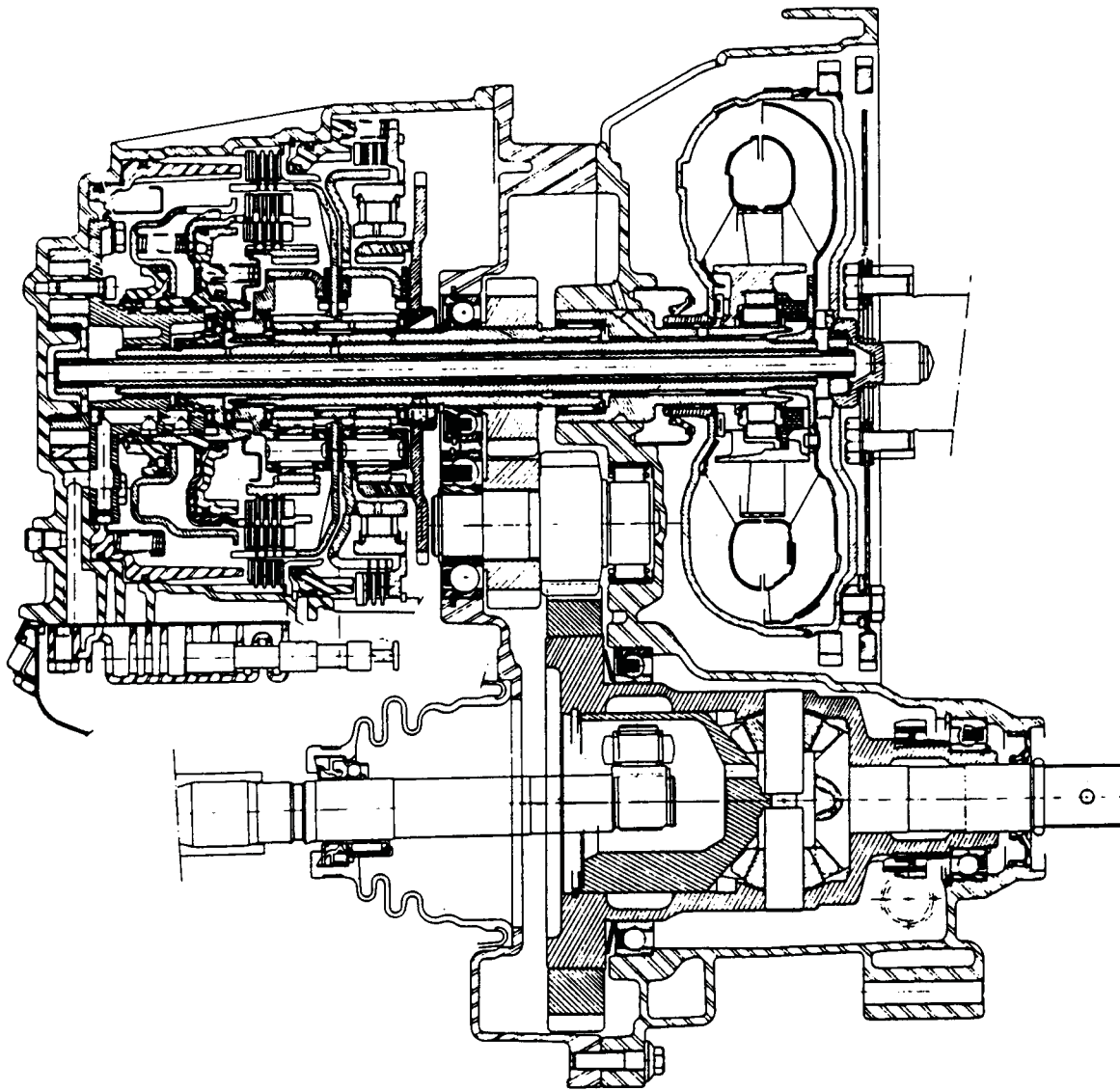




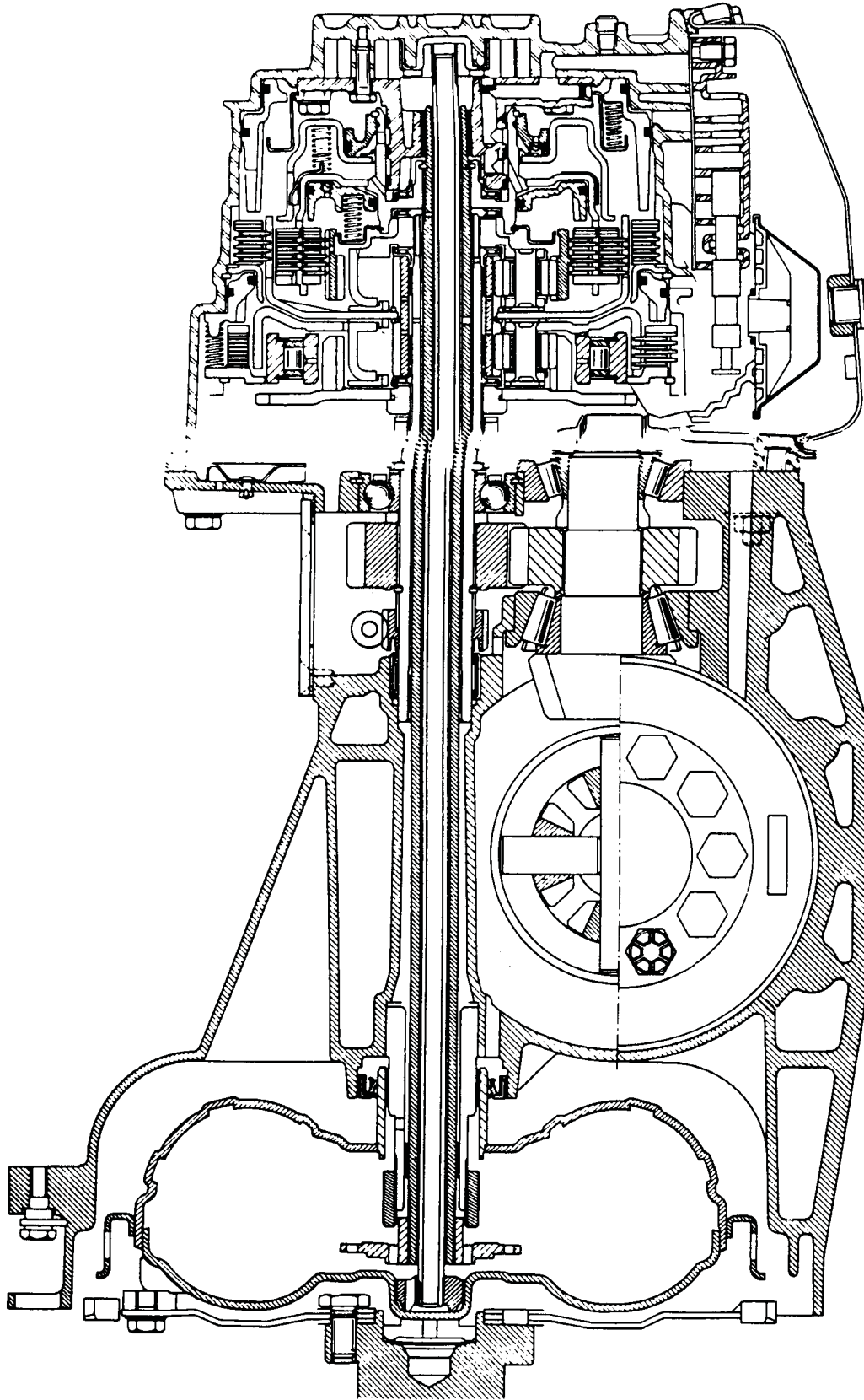
**MB TRANSAXLE (CUTAWAY VIEW)**





# Technical Service Information

## MJ TRANSAXLE (CUTAWAY VIEW)



AUTOMATIC TRANSMISSION SERVICE GROUP



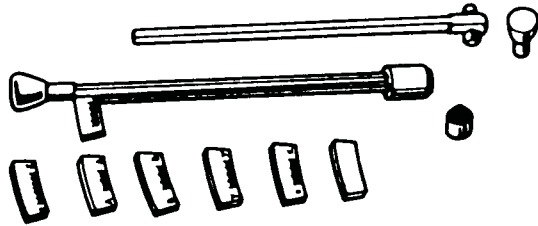
# Technical Service Information

## SPECIAL TOOLS

Tool Ref.	Description	Required	Recommended
<b>B.Vi. 31-01</b>	Set of 3 Roll Pin Drifts		▪
<b>B.Vi. 946</b>	Planetary Snap Ring Installer		▪
<b>B.Vi. 952</b>	Feed Hub Alignment Dowels and Front Piston Removing Tool		▪
<b>Mot. 50</b>	Torque Wrench or Equivalent Beam Type Torque Wrench		▪
<b>Mot. 53</b>	Drain Plug Wrench (98 mm square drive)	▪	
<b>B. Vi. 465</b>	Converter Oil Seal Replacement Tool and Converter Holding Lug	▪	
<b>B. Vi. 466-04</b>	Oil Pressure Gauge (or J-24027 with adapter 8981 320759)	▪	
<b>B. Vi. 466-06</b>	Oil Pressure Gauge for B. Vi. 466-04	▪	
<b>B. Vi. 715</b>	Tool From B. Vi. 710 Kit or use B. Vi. LM	▪	
<b>B. Vi. 883</b>	Differential Outside Band Installer	▪	
<b>B. Vi. 905</b>	Speedometer Shaft Seal Replacement Tool	▪	
<b>B. Vi. 945</b>	Planetary Oil Seal Installing Mandrel	▪	
<b>B. Vi. 947</b>	Intermediary Case Bearing Installer	▪	
<b>B. V. 951</b>	Differential Oil Seal Installer	▪	
<b>B. Vi. 953</b>	Step Down Driven Gear Holding Tool	▪	
<b>B. Vi. 955</b>	Differential Pinion Bearing Preload Measuring Tool	▪	
<b>B. Vi. 958</b>	Diagnostic Tester (or MS 1700 With Adapter)	▪	
<b>B. Vi. 959</b>	Output Shaft Circlip Installing Tool	▪	
<b>B. Vi. 961</b>	Differential Pinion Bearing Race Install- ing Tool	▪	
<b>B. Vi. 962</b>	Converter Oil Seal Installing Tool	▪	

SPECIAL TOOLS

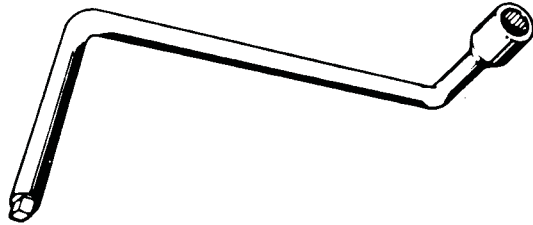
Mot. 50



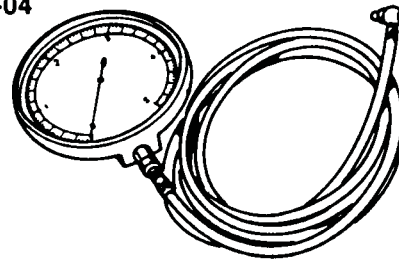
B.Vi. 715



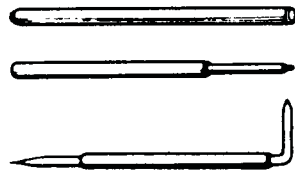
Mot. 593



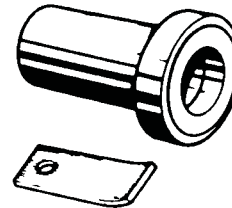
B.Vi. 466-04



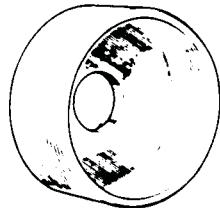
B.Vi. 31-01



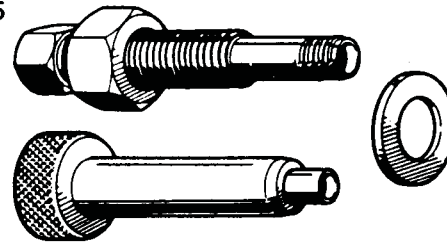
B.Vi. 465



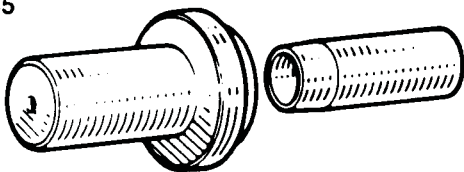
B.Vi. 883



B.Vi. 905



B.Vi. 945



B.Vi. 946

