

Illustration 4

g01517533

6. Measurement (V) is stamped on the head of pinion shaft (30). Measurement (S) is the thickness of the shim that is used between pinion shaft (30) and the bearing cone. Use the following formula in order to calculate Measurement (S) :  $X \text{ mm} - V \text{ mm} = S \text{ mm}$ .
7. Among the available list of shims, choose the shim with the thickness of Measurement (S) .

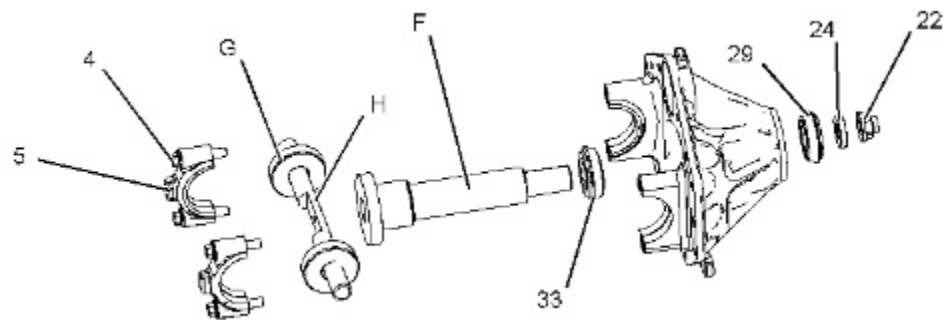
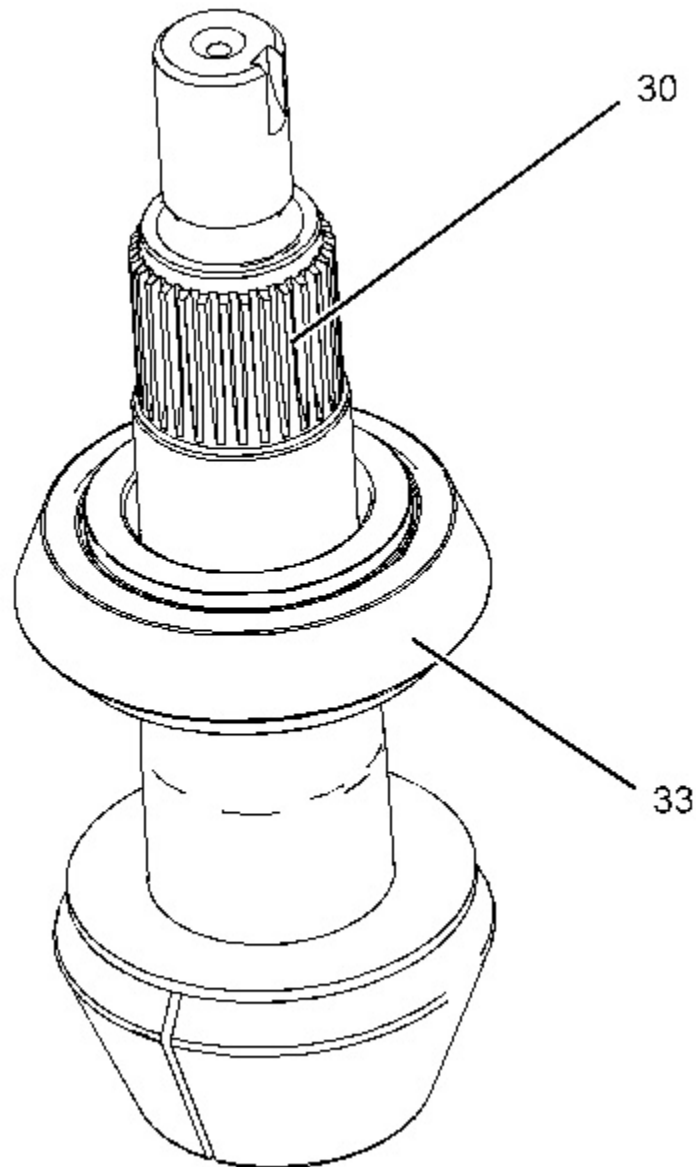


Illustration 5

g0151

8. Remove bolts (4), caps (5), Tooling (G), and Tooling (H). Remove nut (22), washer (24), and bearing cone (29). Remove Tooling (F) and bearing cone (33) .

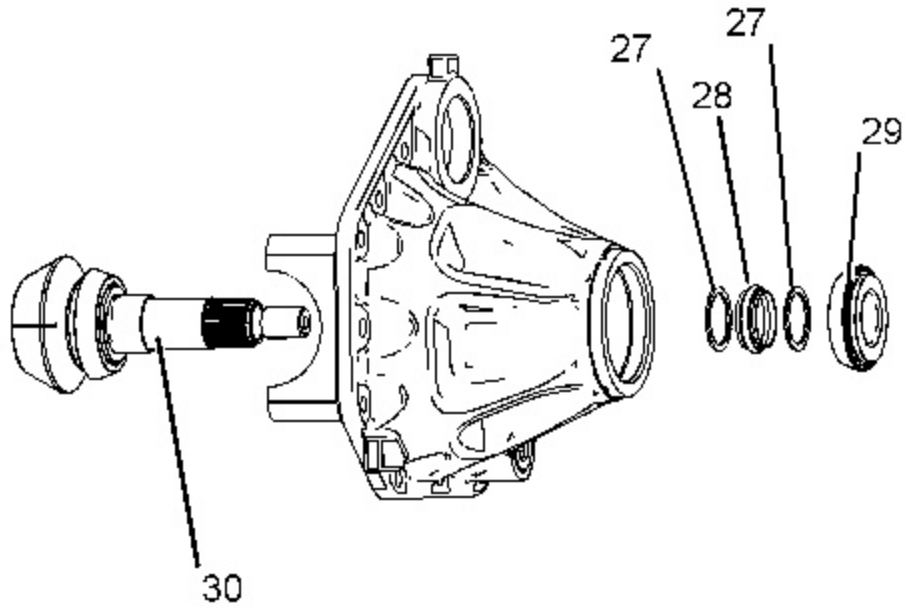


---

Illustration 6

g01517558

9. Install the suitable shim onto pinion shaft (30). Install the shim with the chamfer against the gear. Raise the temperature of bearing cone (33) and install bearing cone (33) onto pinion shaft (30) .
-



---

Illustration 7

g01517455

10. Install pinion shaft (30), washers (27), collapsible spacer (28), and bearing cone (29).
-

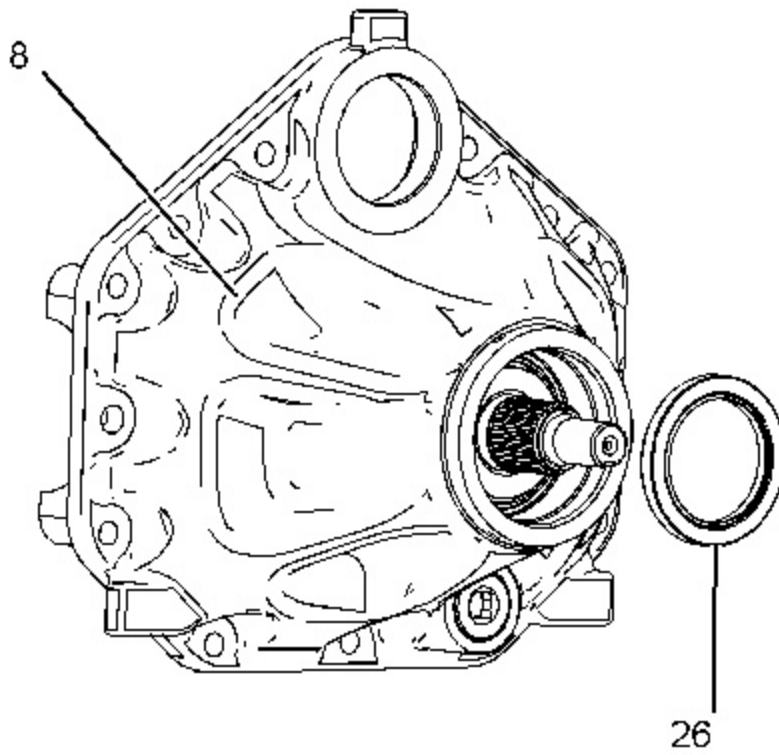
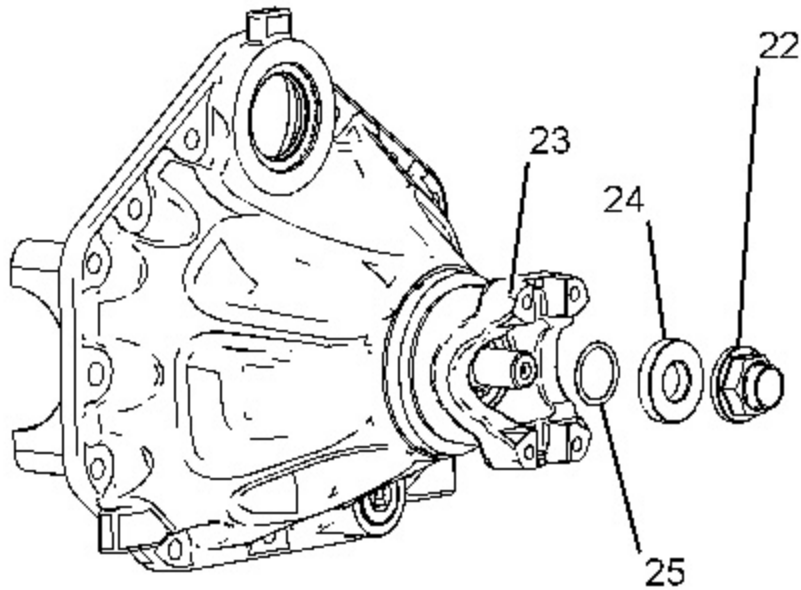


Illustration 8

g01517453

11. Install lip seal (26) to a depth of 16.50 mm (0.650 inch) from the surface of differential housing (8) .
-



---

Illustration 9

g01517573

**Note:** Check the O-ring seal for wear or for damage. If necessary, replace the O-ring seal.

12. Install yoke (23). Install O-ring seal (25), washer (24), and nut (22) .
-