

GS320010

## Removing and installing left handlebar fitting

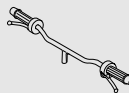
- **[RS]** Remove left side fairing.
- **[GS/R]** Detach fuel tank and pull to the rear.
- **[RT]** Remove upper section of fairing.
- Separate plug connection (1) at clutch switch.
- Disconnect cable for raised idle speed (choke) at actuating lever (2).
- Disconnect clutch cable from release lever, then from handlebar lever.
- Unfasten screw (3) and pull out handlebar weight.
- Remove combination switch.

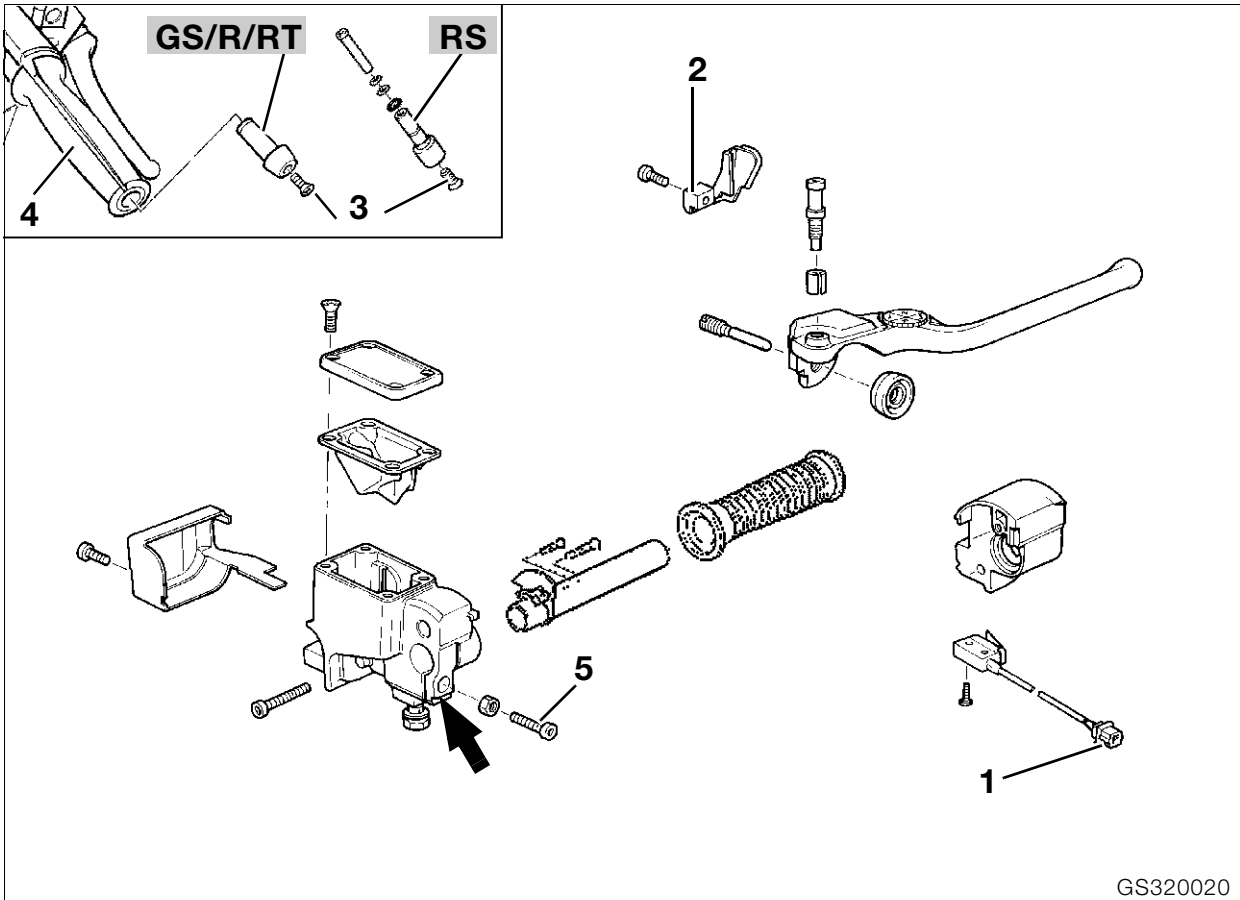
### With heated handlebar grips

- Fold back rubber grip at handlebar fitting end.
- Unfasten retaining screws for heated handlebar grip.
- Separate connector to heated handlebar grip.
- Unfasten cable shoes at connector.
- Pull lead through handlebar.

### Without heated handlebar grips

- Cut through rubber grip and pull it off.
- Loosen clamp screw (4) on handlebar fitting.
- Remove fitting from handlebar.
- Install in the reverse order of work.
- Align slot of handlebar fitting (arrow) with punchmark on handlebar.
- Secure handlebar grip with **Loctite 638 adhesive and surface activator**.
- Adjust clutch cable and lubricate pivot with **Shell Retinax A**.
- ➡ See Group 00
- Check/adjust raised idle speed (choke) setting.
- ➡ See Group 00





GS320020

## Removing and installing right handlebar fitting

- **[RS]** Remove left side trim.
- **[GS/R]** Detach fuel tank and pull it to the rear.
- **[RT]** Remove upper section of fairing.
- Separate connector (1) at brake light switch.
- Detach brake line and seal off.

### **Caution:**

Do not allow brake fluid to come into contact with painted parts of the motorcycle, because brake fluid destroys paint.

- Remove combination switch.
- Unfasten throttle cable cover (2) and disconnect throttle cable.
- Unfasten screw (3) and pull out handlebar weight.

### **With heated handlebar grips**

- Fold back rubber grip at handlebar fitting end.
- Unfasten retaining screws for heated handlebar grip.
- Separate connector to heated handlebar grip.
- Unfasten cable shoes at connector.
- Pull lead through handlebar.

### **Without heated handlebar grips**

- Cut open rubber grip (4) and pull off.
- Unfasten clamp screw (5) from fitting housing.
- Remove handlebar fitting.
- Install in the reverse order of work.
- Align slot of handlebar fitting (arrow) with punch mark on handlebar.
- Secure rubber handlebar grip with **Loctite 638 adhesive and surface activator**.

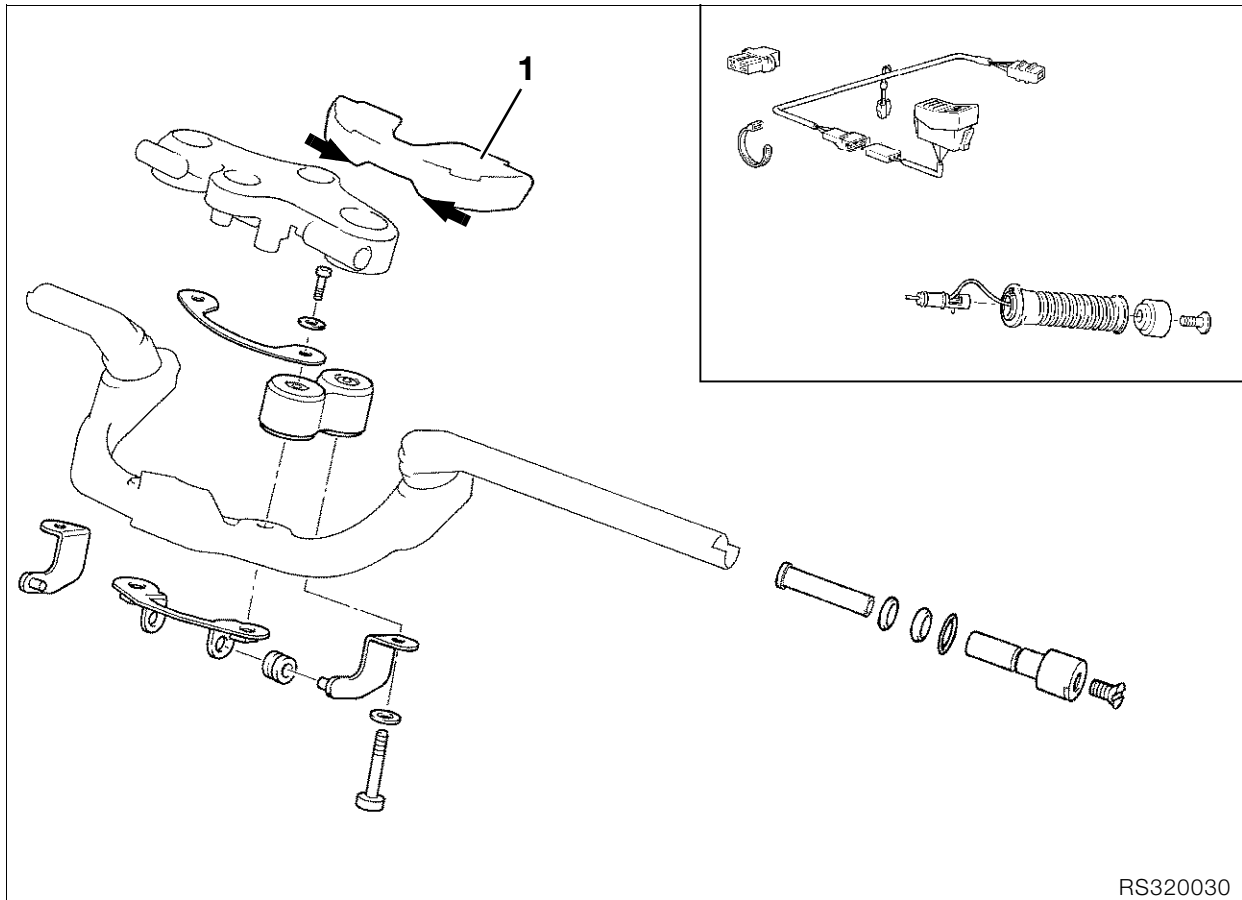
### **Caution:**

Top up brake fluid, bleed brake system.

**– Adjustable handlebar –** In the center position the brake hose fitting at the master brake cylinder must have sufficient clearance (app. 5 ... 10 mm (0.1969...0.3937in)) from the center section of the handlebar. If necessary, unfasten the wiring harness.

### **Tightening torque:**

Brake hose to fitting ..... 7 Nm



RS320030

## [RS] Removing and installing handlebar

- Remove left/right handlebar fittings.
- Remove trim (1) from fork bridge (press hooks in direction of arrow).
- Remove handlebar.
- Install in the reverse order of work.



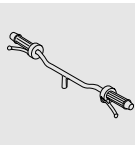
### Caution:

Ensure that brake hoses are correctly located.

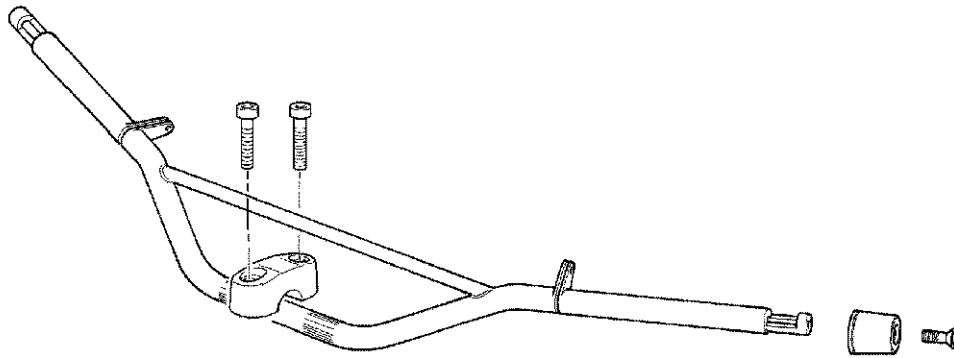


### Tightening torquet:

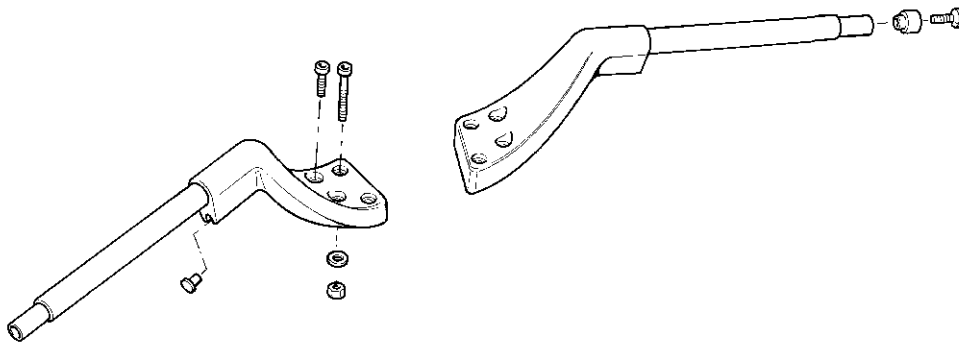
Handlebar at rubber mount .....	40 Nm
Rubber mount at fork bridge .....	40 Nm
Handlebar weight to fixed handlebar .....	20 Nm
Handlebar weight to adjustable handlebar (clean thread + Loctite 2701).....	7 Nm



**GS**



**R/RT**



GS320030

### [GS/R/RT] Removing and installing handlebar

- Remove left/right handlebar fittings.
- Remove handlebar.
- Install in the reverse order of work.



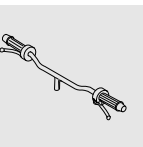
**Caution:**

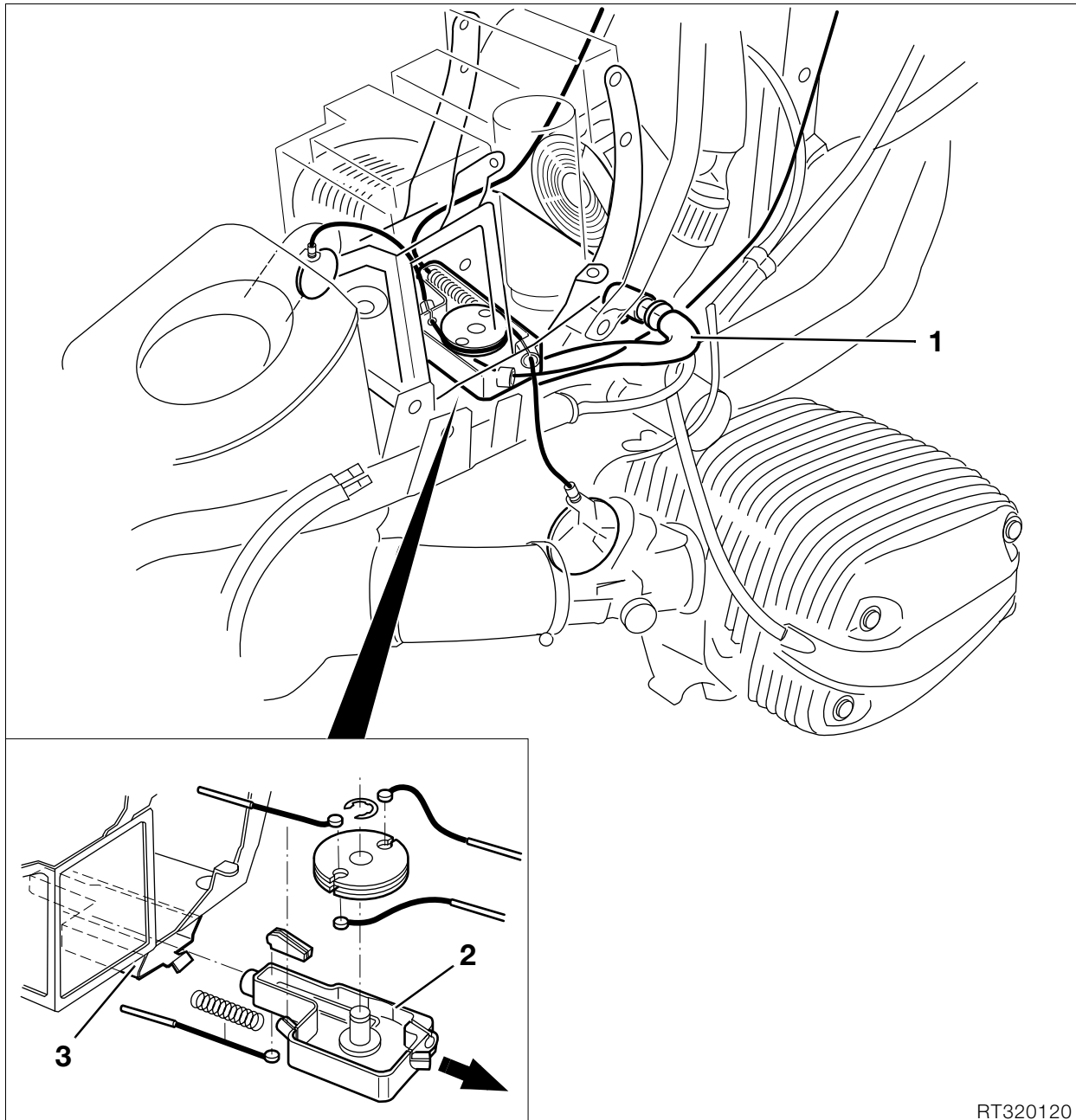
Make sure that brake hoses are correctly routed.  
**[GS]** Align punch mark on handlebar with gap between clamp blocks.



**Tightening torque::**

Clamp to fork bridge	
<b>[GS]</b> .....	21 Nm
Handlebar to fork bridge	
<b>[R/RT]</b> .....	21 Nm
Weight to handlebar .....	20 Nm

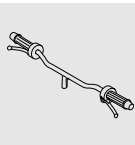




RT320120

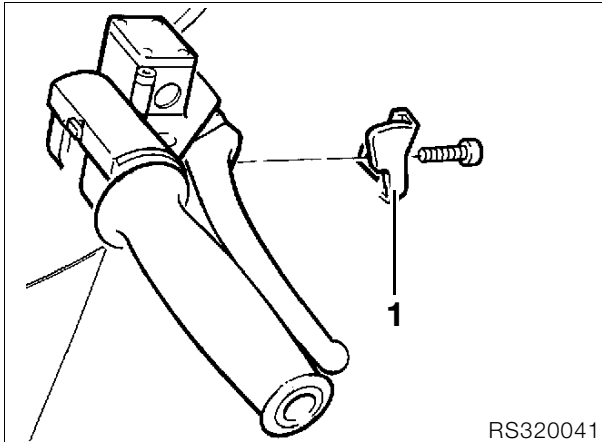
## Removing and installing wire cable distributor block

- **[RS/RT]** Remove side fairings.
  - Unscrew fuel tank and pull to the rear.
  - Remove cold-start lever (increased idle speed)/ disconnect the wire cable.
  - Remove the cable cover at the throttle operating fitting.
  - Detach the wire cables at the left and right throttle stub pipes.
  - Release the cable straps.
  - Detach the engine breather pipe (1) from the engine.
  - Pull the wire cable distributor block (2) out of holder (3) in the direction of the arrow.
  - Install in the reverse order of work.
  - Adjust the wire cables.
- ➡ See Group 00

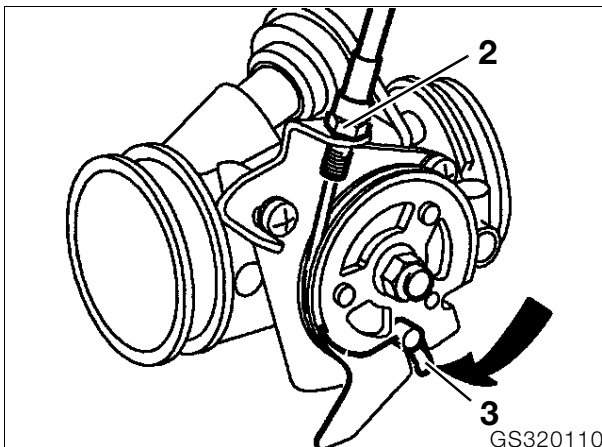


## Removing and installing throttle cable

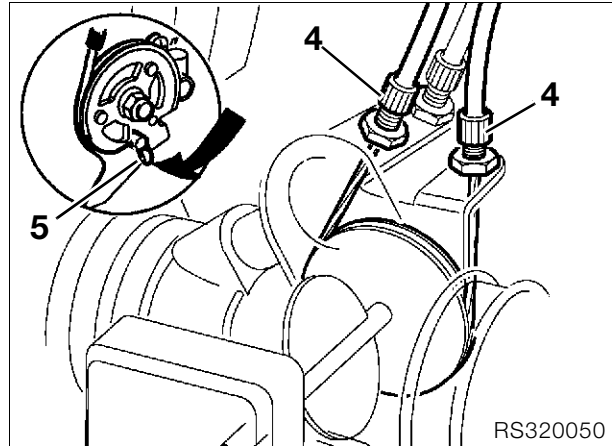
- [RS] Remove left side fairing.
- [GS/RT] Detach fuel tank and pull it to the rear.



- Remove cable cover (1) from handlebar fitting and disconnect cable.



- Unfasten cable adjusting screw (2) on the right throttle body.
- Press in retaining spring (3) and disconnect cable.

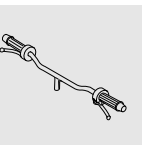


- Unfasten both cable adjusting screws (4) on left throttle body
- Press in retaining spring (5) and disconnect cable
- Install in the reverse order of work.



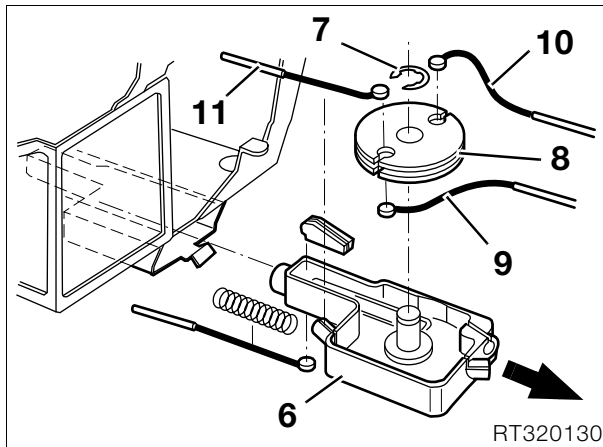
**Caution:**  
Install wire cable without kinking.

- Adjust wire cable.
- ➡ See Group 00

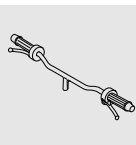


### With wire cable distribution block

- Remove cable cover (1) at fitting/disconnect the cable.
- Remove the choke lever/disconnect the cable.
- Remove the wire cable adjusting screws (2) at the right and left throttle stub pipes.
- Press in retaining spring (3) and disconnect the cables.

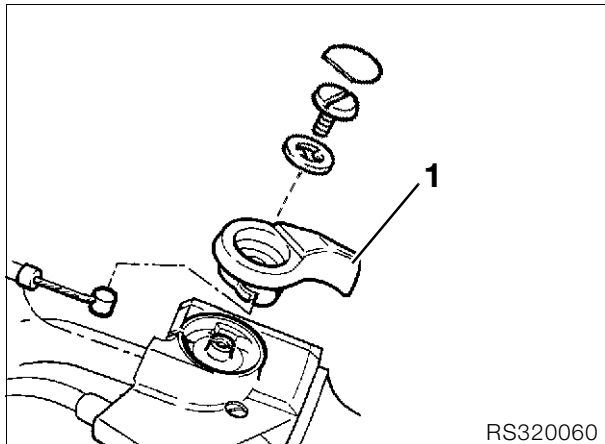


- Pull out the cable distribution block (6) in the direction of the arrow.
  - Release the keeper (7) and remove the distributing disk (8).
  - Disconnect cables (9), (10) and (11).
  - Install in the reverse order of work.
  - Adjust the wire cables.
- ➡ See Group 00

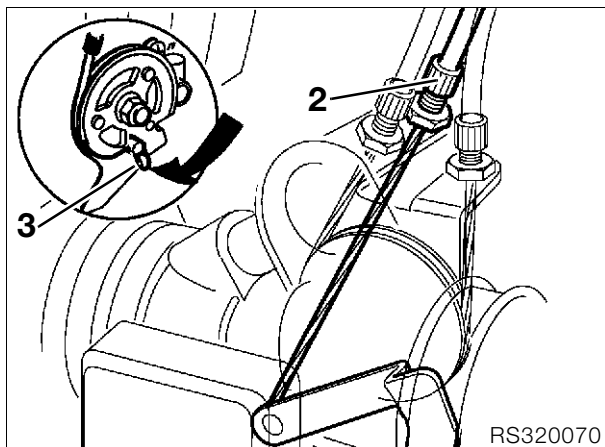


## Removing and installing cold-start cable

- [RS/RT] Remove the left fairing.
- [GS] Detach the fuel tank and pull it to the rear.



- Remove actuating lever (1)/disconnect cable



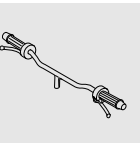
- Slacken off cable adjustment screw (2) on left throttle body
- Press in retaining spring (3) and disconnect cable.
- Install in the reverse order of work..



### Caution:

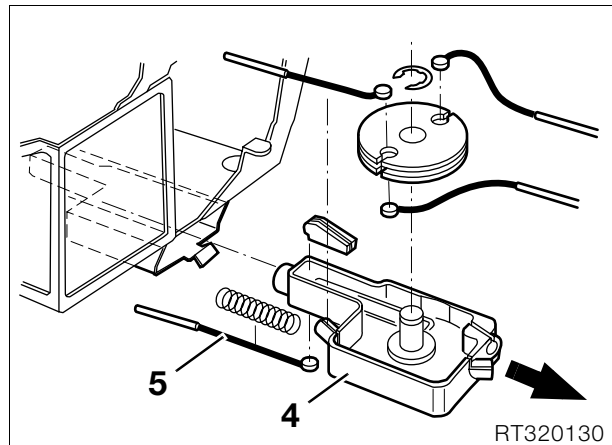
Install wire cable without kinking.

- Adjust wire cable.
- ➡ See Group 00



### With wire cable distribution block

- Remove cable cover at throttle fitting/disconnect the cable.
- Remove actuating lever (1)/disconnect cable.
- Remove the cable adjusting screws at the right and left throttle stub pipes.
- Press in the retaining spring and remove the cable



- Remove the wire cable distribution block (4) in the direction of the arrow.
- Detach cable (5).
- Install in the reverse order of work.
- Adjust wire cable
- ➡ See Group 00