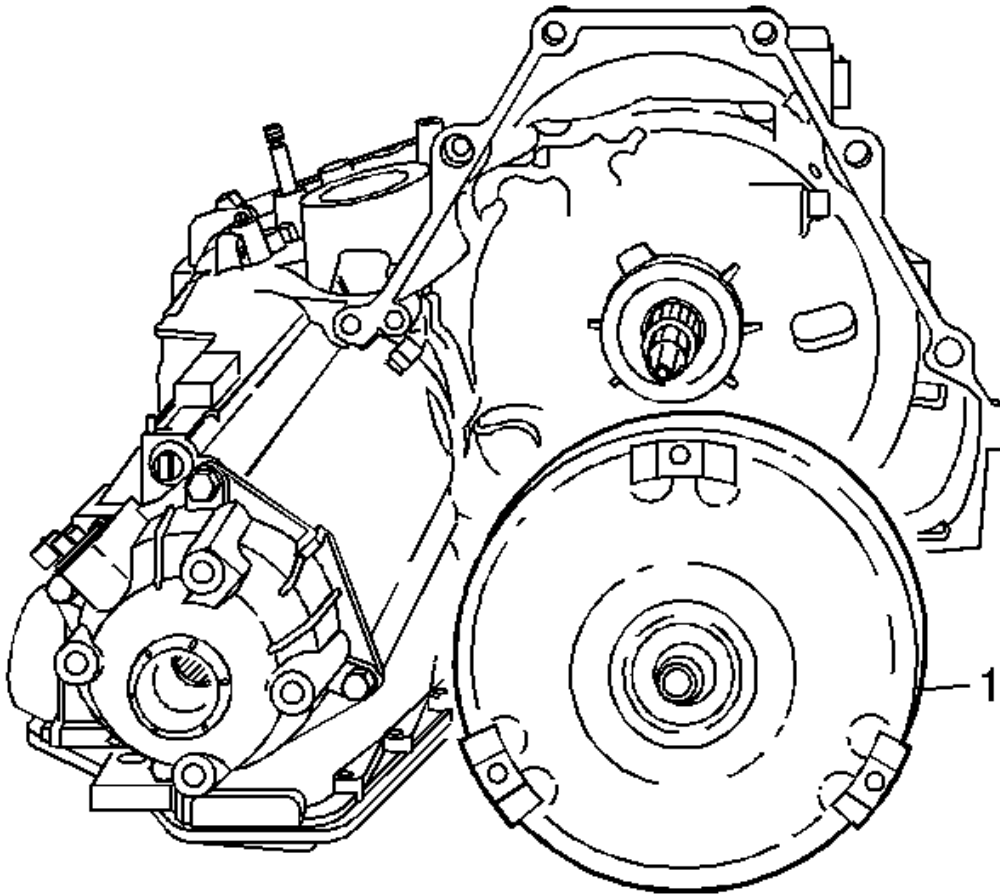


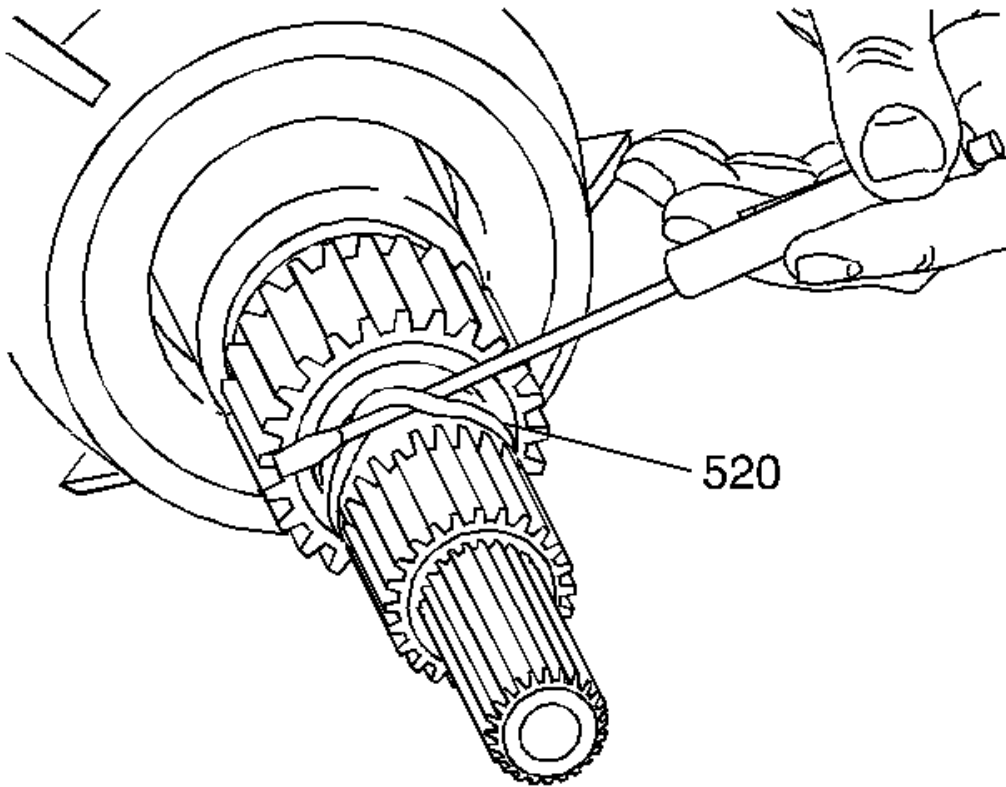
## TORQUE CONVERTER ASSEMBLY REMOVAL



**Fig. 1: View Of Torque Converter Assembly**  
Courtesy of GENERAL MOTORS COMPANY

**WARNING:** The torque converter weighs approximately 35 lbs. Personal injury may result if you lift the torque converter improperly.

1. Remove the torque converter assembly (1).



**Fig. 2: Identifying Turbine Shaft O-Ring Seal**  
Courtesy of GENERAL MOTORS COMPANY

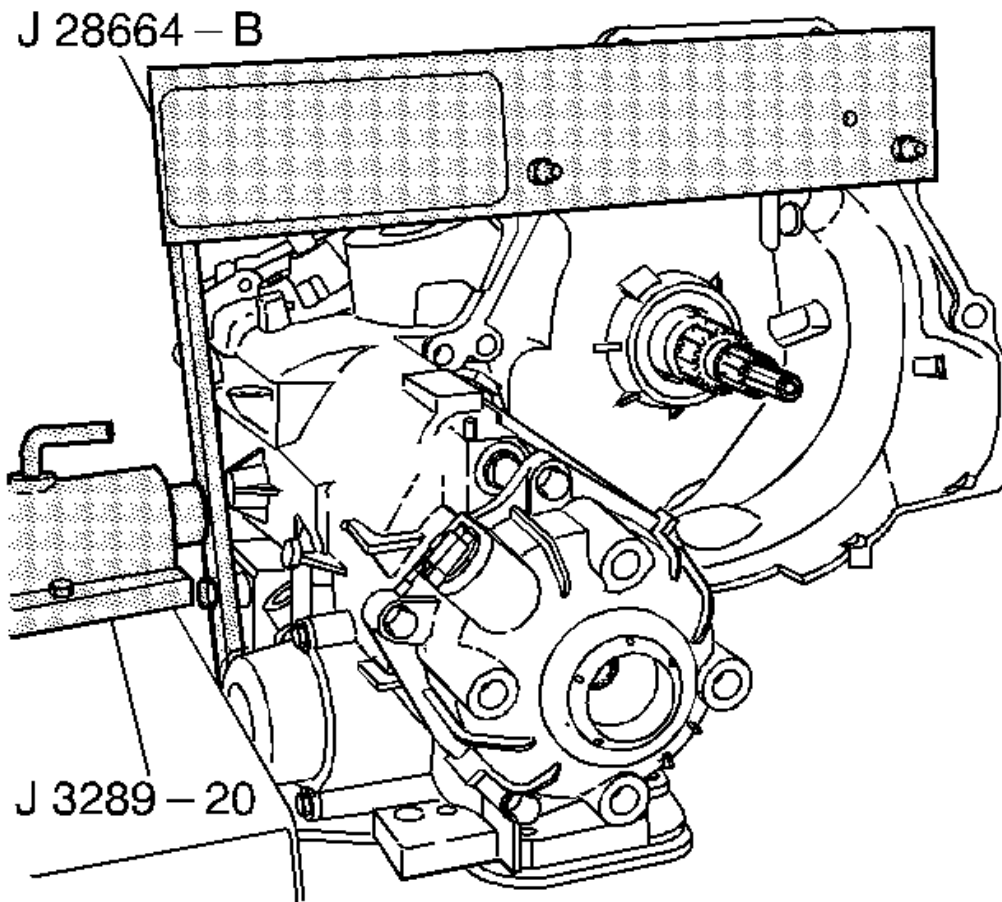
2. Remove the turbine shaft O-ring seal (520).

## TRANSMISSION SUPPORT FIXTURE ASSEMBLE

### Special Tools

- **J 3289-20** Holding Fixture Base
- **J 28664-B** Transmission Holding Fixture
- **J 44465** Holding Fixture Adapter(if required)

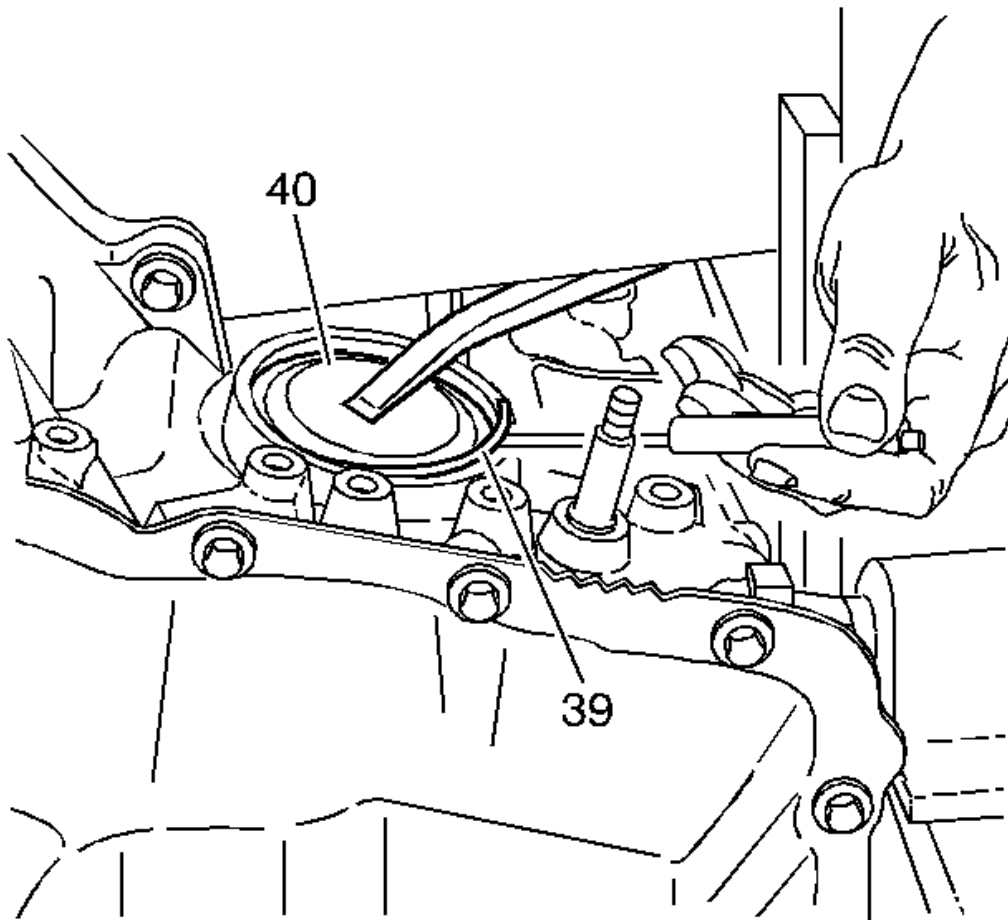
For equivalent regional tools, refer to **Special Tools** .



**Fig. 3: J 28664-B & J 3289-20 Installed Onto Transmission**  
Courtesy of GENERAL MOTORS COMPANY

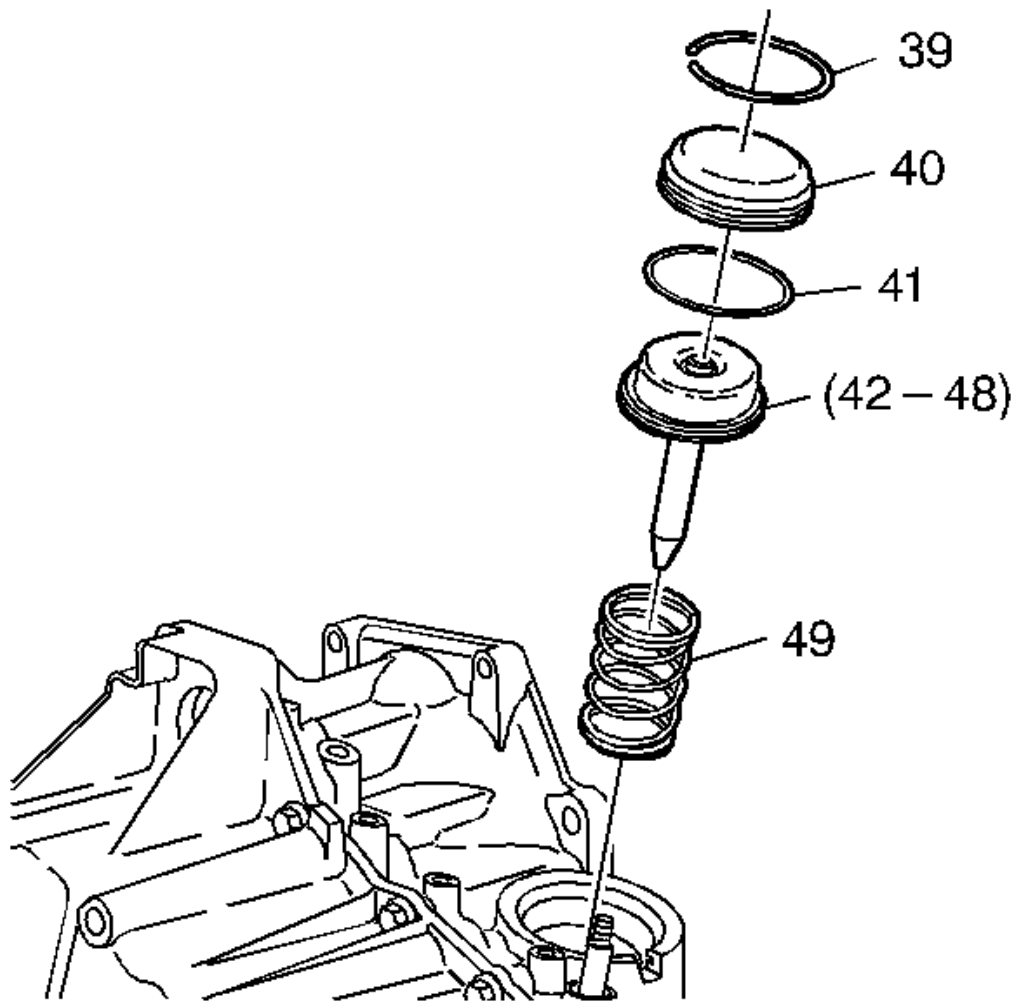
1. Install **J 44465** fixture adapter(if required) onto **J 28664-B** holding fixture.
2. Install **J 28664-B** holding fixture onto the transmission.
3. Install the transmission and holding fixture into **J 3289-20** holding fixture base.
4. Insert the pin into **J 3289-20** holding fixture base in order to hold the transmission in the desired position.

#### **REVERSE SERVO REMOVAL**



**Fig. 4: Identifying Reverse Servo Cover And Snap Ring**  
Courtesy of GENERAL MOTORS COMPANY

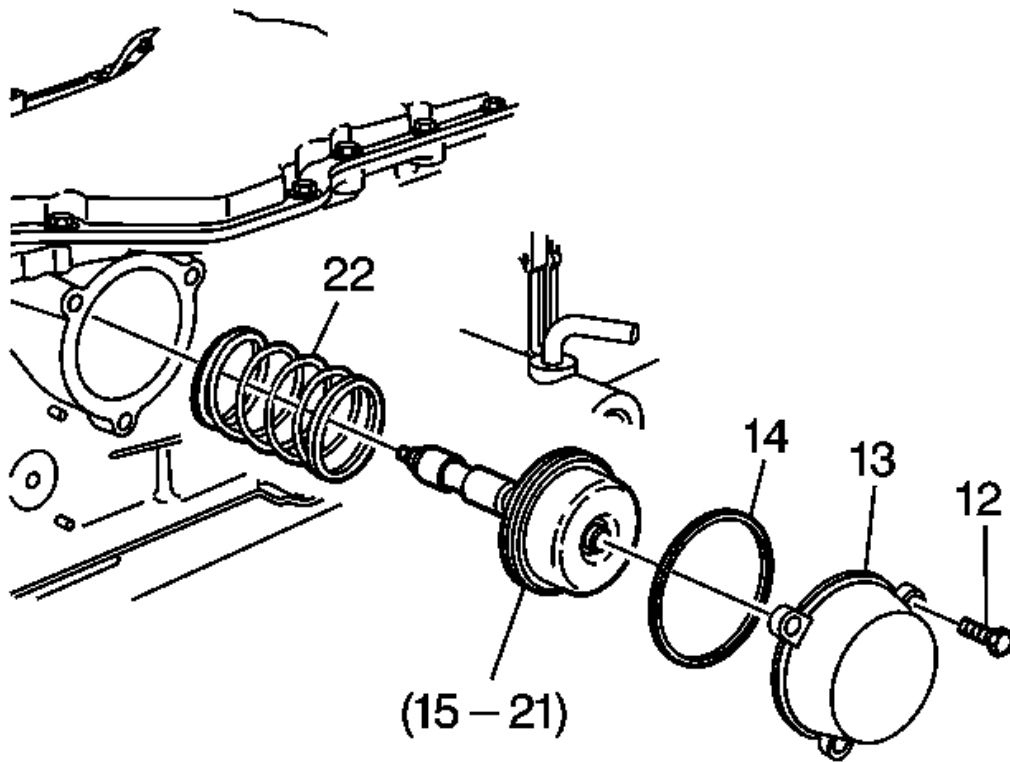
1. Use a long screwdriver in order to depress the reverse band servo cover (40) by prying against the transmission holding fixture.
2. Use a small screwdriver in order to pry out the retaining ring (39) from the reverse band servo cover.



**Fig. 5: Identifying Reverse Servo Assembly Components**  
Courtesy of GENERAL MOTORS COMPANY

3. Remove the long screwdriver. The servo assembly will push the servo cover (40) up.
4. Remove the servo cover (40) and the servo cover O-ring seal (41).
5. Remove the reverse band servo assembly (42-48).
6. Remove the reverse band servo piston spring (49).

#### **FORWARD SERVO REMOVAL**

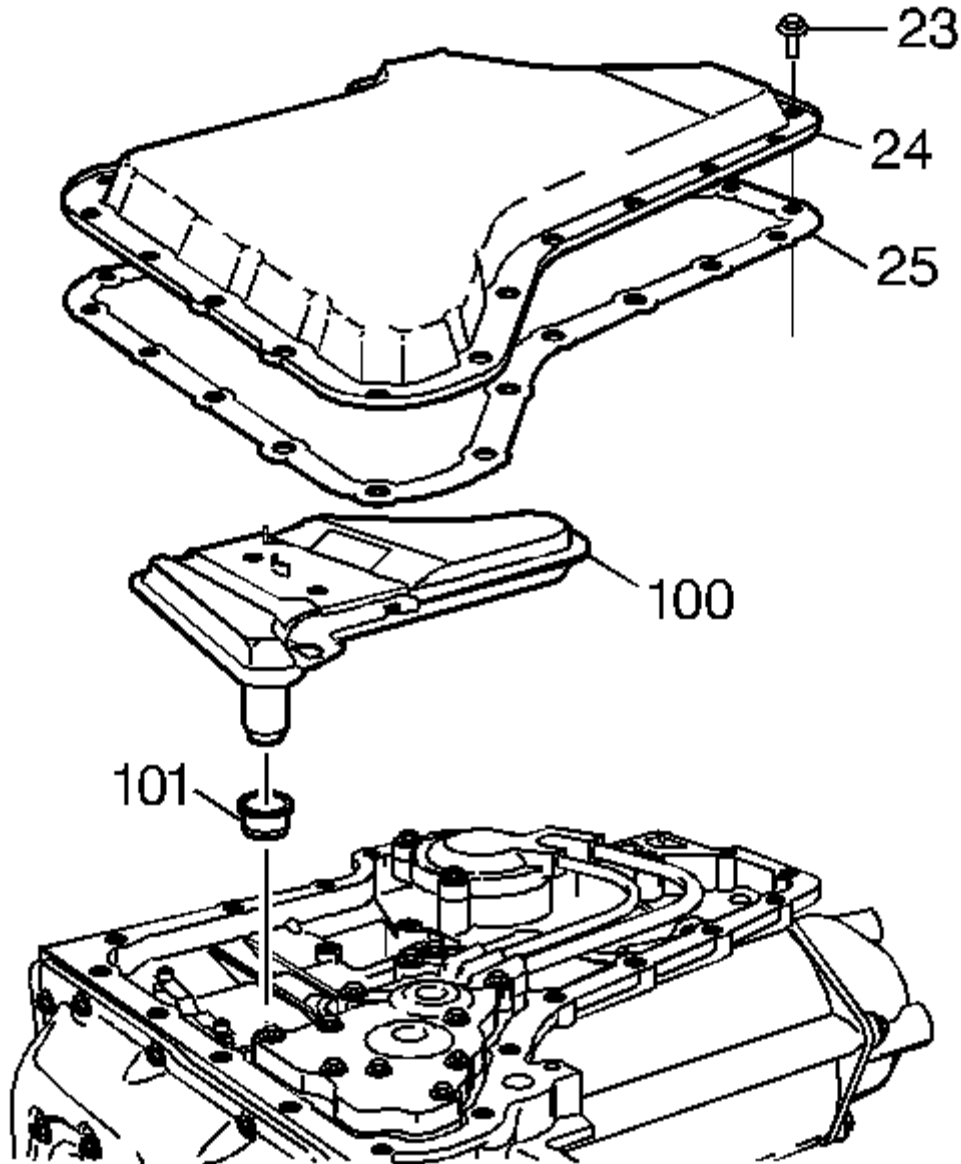


**Fig. 6: View Of Servo Assembly**

Courtesy of GENERAL MOTORS COMPANY

1. Remove the three forward band servo cover bolts (12).
2. The servo assembly will push the servo cover out. If the servo cover does not push out, tap it with a rubber mallet.
3. Remove the servo cover (13) and remove the cover seal (14).
4. Remove the servo assembly (15-21).
5. Remove the piston spring (22) from the forward band servo.

## TRANSMISSION FLUID PAN AND FILTER ASSEMBLY REMOVAL



**Fig. 7: View Of Filter, Oil Pan & Oil Pan Bolts**  
Courtesy of GENERAL MOTORS COMPANY

1. Remove the 20 oil pan bolts (23).
2. Remove the oil pan (24).
3. Remove the oil pan gasket (25).