

2007 Buick Terraza CX

2007 ENGINE Engine Mechanical - 3.9L - Montana SV6 (Canadian), Terraza & Uplander

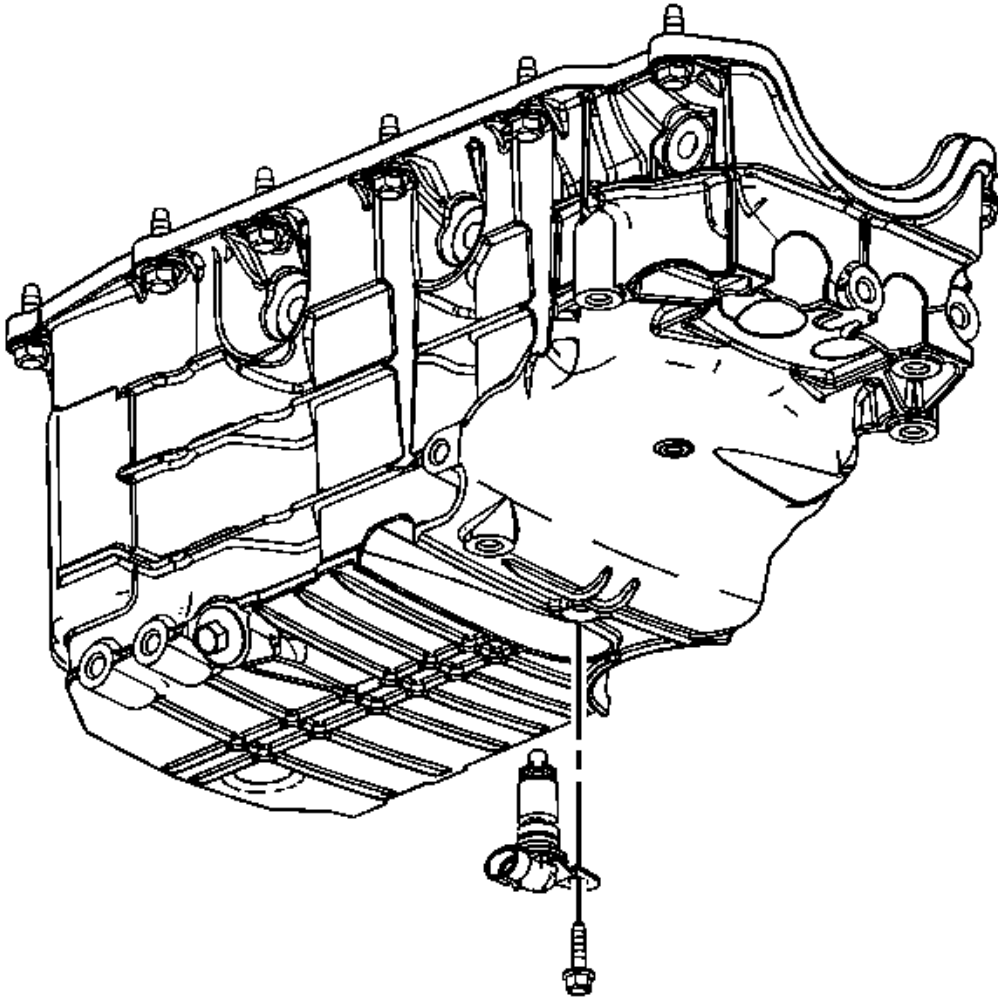


Fig. 189: Identifying Engine Oil Level Sensor Bolt & Sensor
Courtesy of GENERAL MOTORS CORP.

NOTE: Refer to Fastener Notice .

1. Install the engine oil level sensor and bolt.

Tighten: Tighten the bolt to 10 N.m (89 lb in).

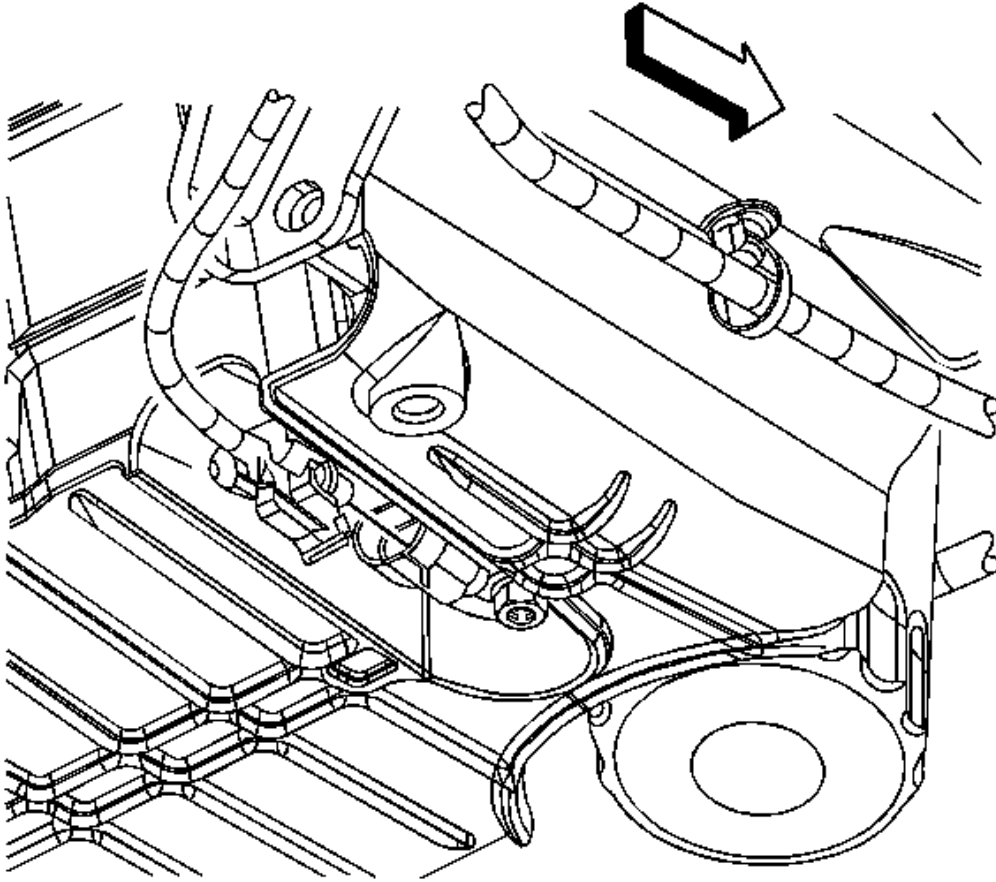


Fig. 190: Identifying Engine Harness & Clips
Courtesy of GENERAL MOTORS CORP.

2. Connect the engine oil level sensor electrical connector.
3. Lower the vehicle.
4. Refill the crankcase with new engine oil.

Oil Pump Replacement

Removal Procedure

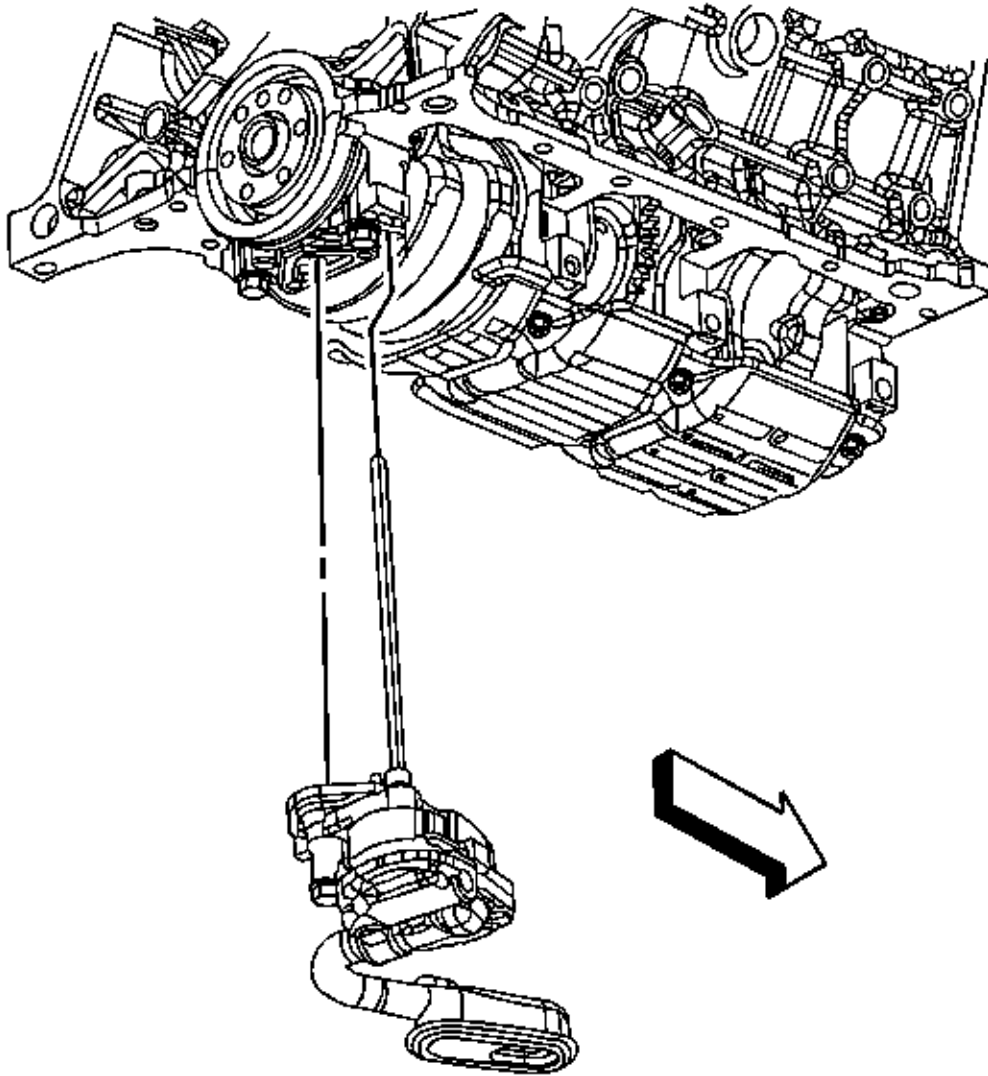


Fig. 191: Identifying Oil Pump & Oil Pump Drive Shaft
Courtesy of GENERAL MOTORS CORP.

1. Remove the oil pan. Refer to **Oil Pan Replacement**.
2. Remove the oil pump bolt.
3. Remove the oil pump and the oil pump drive shaft.

Installation Procedure

2007 Buick Terraza CX

2007 ENGINE Engine Mechanical - 3.9L - Montana SV6 (Canadian), Terraza & Uplander

IMPORTANT: Rotate the oil pump drive shaft as necessary in order to obtain the engagement with the oil pump drive unit.

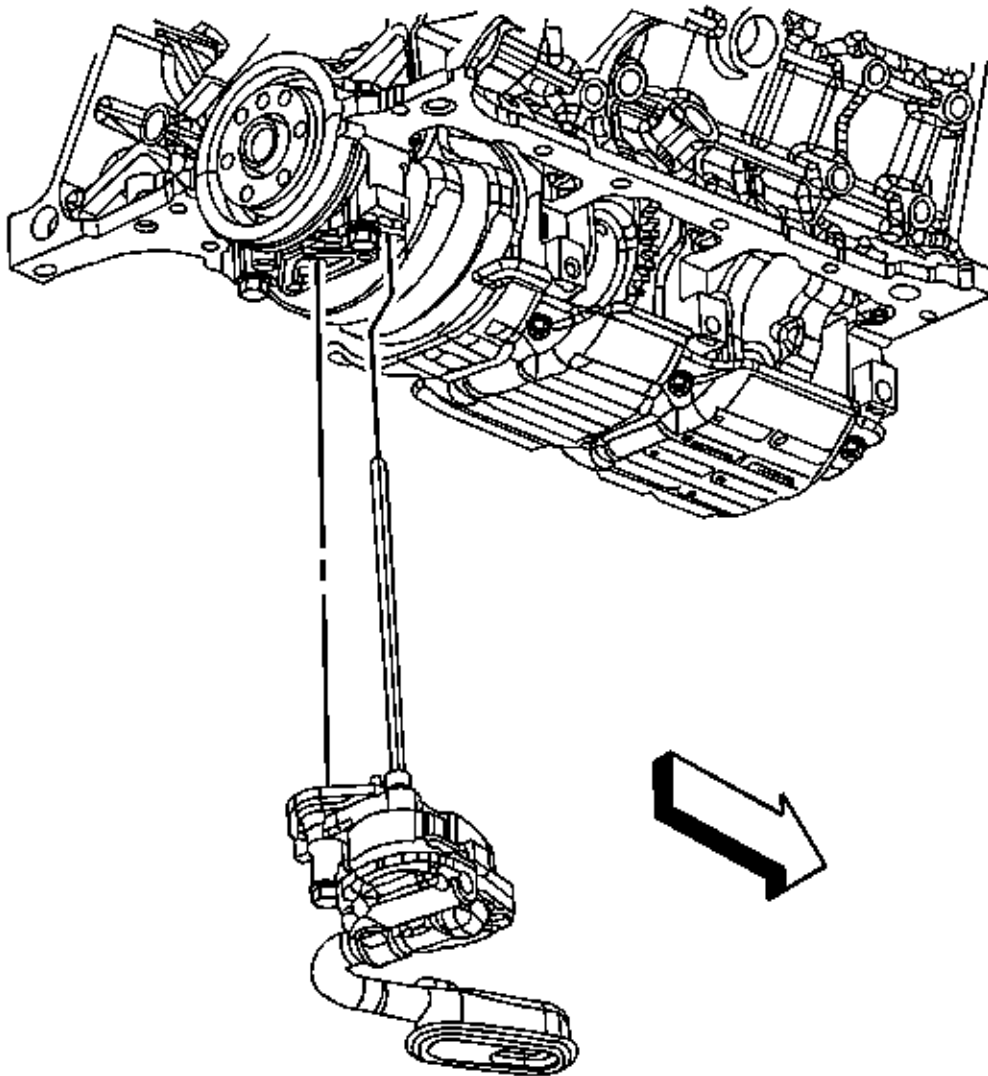


Fig. 192: Identifying Oil Pump & Oil Pump Drive Shaft
Courtesy of GENERAL MOTORS CORP.

NOTE: Refer to Fastener Notice .

2007 Buick Terraza CX

2007 ENGINE Engine Mechanical - 3.9L - Montana SV6 (Canadian), Terraza & Uplander

1. Install the oil pump drive shaft and the oil pump.
2. Install the oil pump bolt.

Tighten: Tighten the bolt to 41 N.m (30 lb ft).

3. Install the oil pan. Refer to **Oil Pan Replacement**.

Oil Pump Drive Replacement

Removal Procedure

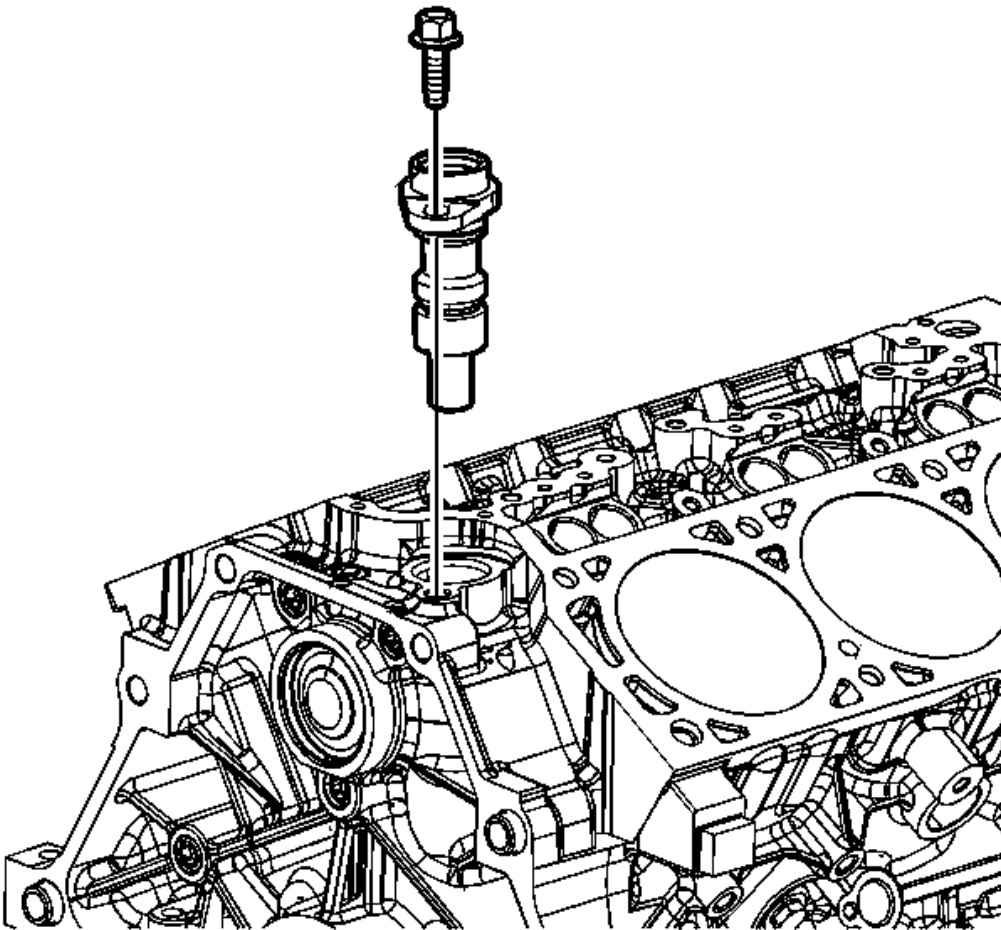


Fig. 193: Identifying Oil Pump Drive
Courtesy of GENERAL MOTORS CORP.