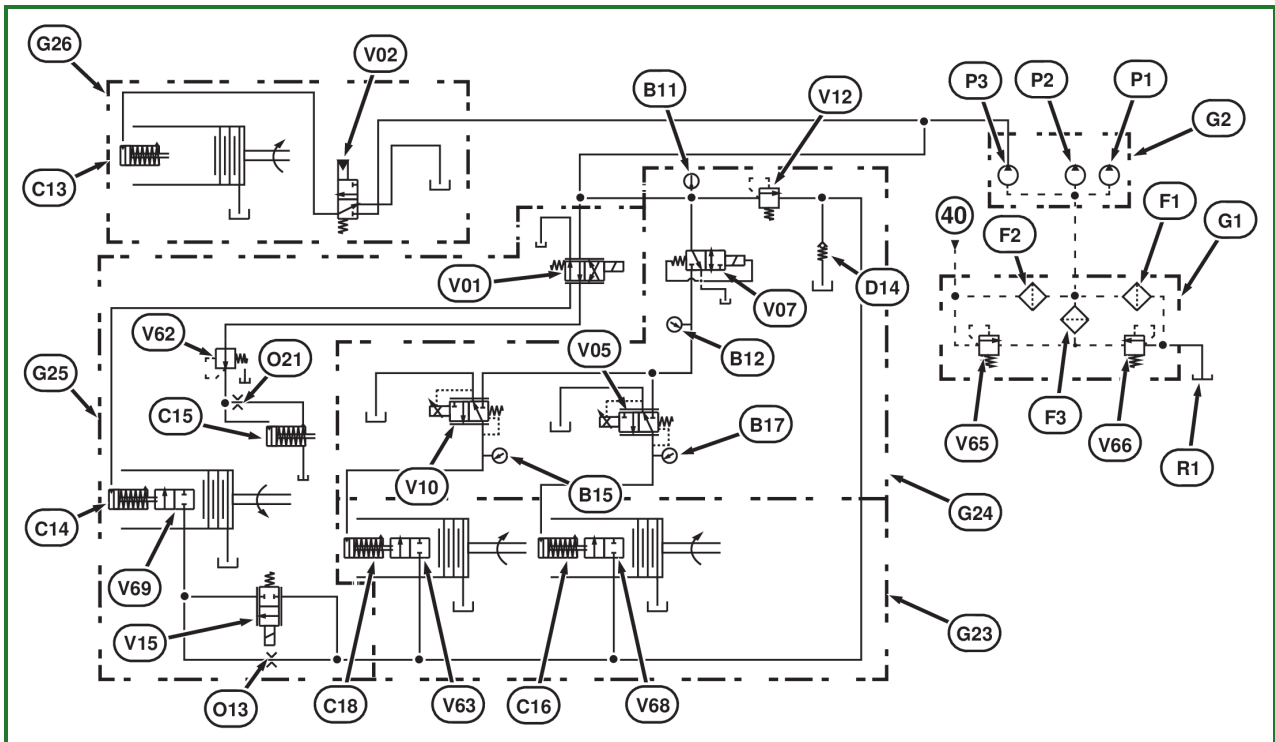


Hydraulic Schematic - 24x8



PY20978-UN: Hydraulic Schematic - 24x8

LEGEND:

- B11 - Transmission Oil Temperature Sensor
- B12 - Enable Pressure Sensor
- B15 - Forward Clutch Pressure Sensor / High Clutch Pressure Sensor
- B17 - Low Clutch Pressure Sensor
- C13 - MFWD Clutch (if equipped)
- C14 - PTO Clutch Piston
- C15 - PTO Brake Piston
- C16 - Transmission Forward (Low) Clutch
- C18 - Transmission Forward (High) Clutch
- D14 - Lube Relief Check Valve
- F1 - Suction Filter
- F2 - Return Filter
- F3 - Return Filter Bypass Screen
- G1 - Hydraulic Filter Assembly
- G2 - Triple Pump Assembly
- G23 - Wet Clutch Transmission Assembly
- G24 - Wet Clutch Transmission Control Valve Assembly
- G25 - EH PTO Assembly
- G26 - EH MFWD Assembly (if equipped)
- O13 - PTO Modulator Spool Valve Bleed Orifice
- O21 - PTO Brake Lube Orifice
- P1 - Steering Pump
- P2 - Implement Pump
- P3 - Transmission Lube Pump
- R1 - Differential Case
- V01 - PTO Solenoid Valve
- V02 - MFWD Solenoid Valve (if equipped)

- V05 - Transmission Forward (Low) Solenoid Valve
- V07 - Transmission Enable Valve
- V10 - Transmission Forward (High) Solenoid Valve
- V12 - Transmission Pressure Regulating Valve
- V15 - PTO Modulator Spool Valve
- V62 - PTO Brake Pressure Reducing Valve
- V63 - Forward (High) Clutch Lube Valve
- V65 - Return Filter Bypass Valve
- V66 - Suction Filter Bypass Valve
- V68 - Forward (Low) Clutch Lube Valve
- V69 - PTO Clutch Lube Valve
- 40 - From Selective Control Valves

Go to [Section_04:Group_165](#)

CP00834,0002551-19-20170907