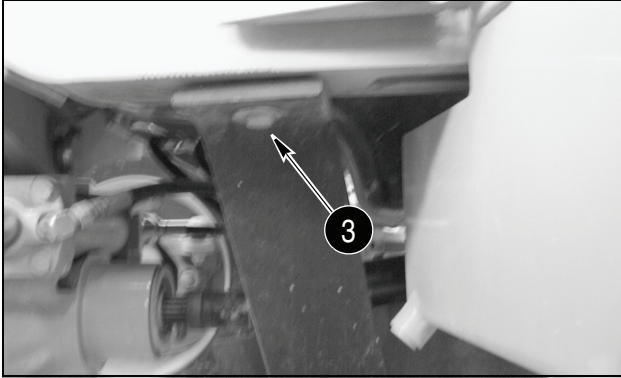


STEP 14

BD01B362

Put a floor jack under the front drive shaft guard that will hold the guard in place when the caps screws are removed. Loosen and remove the cap screws and washers (3) from the remaining mounting brackets on the front drive shaft guard. Remove the front drive shaft guard from the machine.

STEP 15

If equipped, remove the retainer and bolts that fasten the front drive shaft to the transmission output shaft yoke. Remove the front drive shaft from the splined pinion shaft on the front axle.

NOTE: During installation apply Loctite 243 to the bolts for the retainer. Tighten the bolts to 33 to 39 Nm (24 to 29 pound-feet).

STEP 16

Remove the retainer and bolts that fasten the rear drive shaft to the transmission output shaft yoke. Remove the rear drive shaft from the splined pinion shaft on the rear axle.

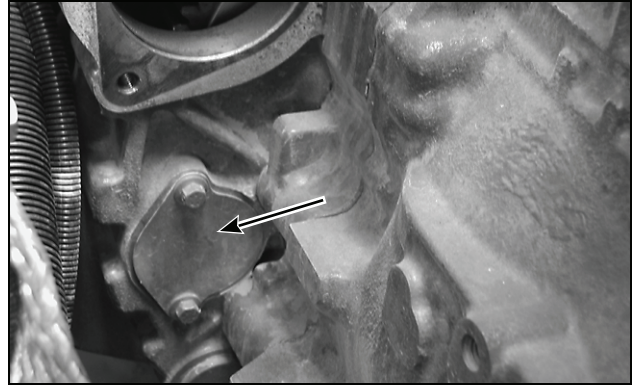
NOTE: During installation Loctite 243 to the bolts for the retainer. Tighten the bolts to 33 to 39 Nm (24 to 29 pound-feet).

STEP 17

Tag and disconnect the transmission cooler inlet and outlet hoses at the transmission. Install caps on the transmission fittings and plugs in the hose ends.

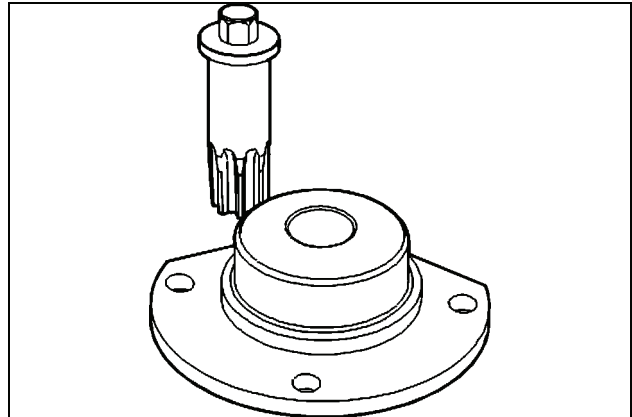
STEP 18

Remove the hydraulic pump, see section 8001.

STEP 19

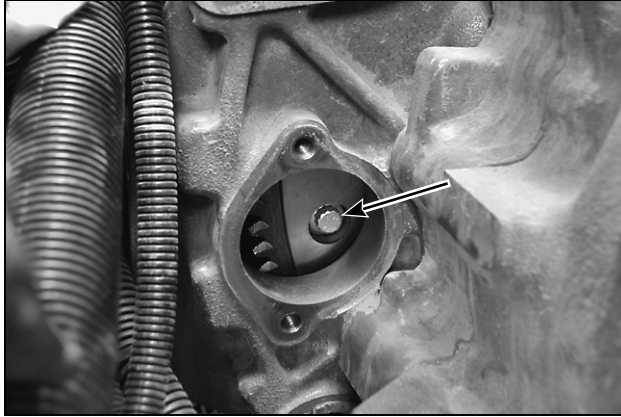
BD03K031

Remove the starter from the engine. Remove the access cover from the bell housing.

STEP 20

BC04A195

Install the engine turning tool, 380000988, to turn the flywheel for access to the cap screws.

STEP 21

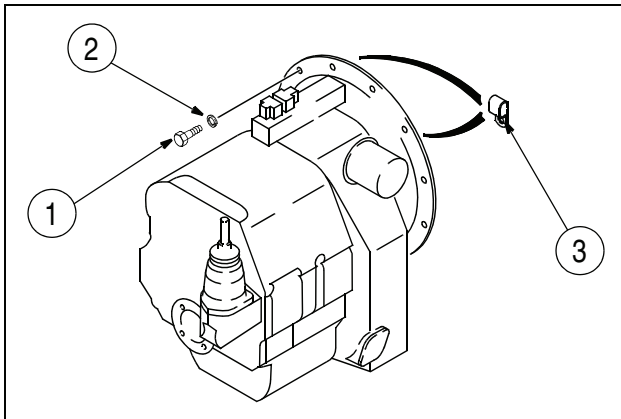
BD03K033

Loosen and remove the four cap screws that fasten the flywheel to the flex plate.

NOTE: During installation make sure that the converter is in the correct position on the transmission shaft. Align the holes in the flex plate with the holes in the fly wheel. Install but do not tighten all four cap screws, then final torque the cap screws to 52 to 57 Nm (38 to 42 pound-feet).

STEP 22

Use acceptable stands or blocks to secure the engine in place.

STEP 23

BT95K029

1. CAP SCREW
2. WASHER

3. HEATER HOSE CLAMP

Loosen and remove the 12 cap screws (1) and flat washers (2) that fasten the transmission to the engine. If equipped, move the heater hose and clamps (3) out of the way.

NOTE: During installation tighten the 12 cap screws to a torque of 52 to 57 Nm (38 to 42 pound-feet)

STEP 24

Install a transmission jack under the transmission and apply light pressure.

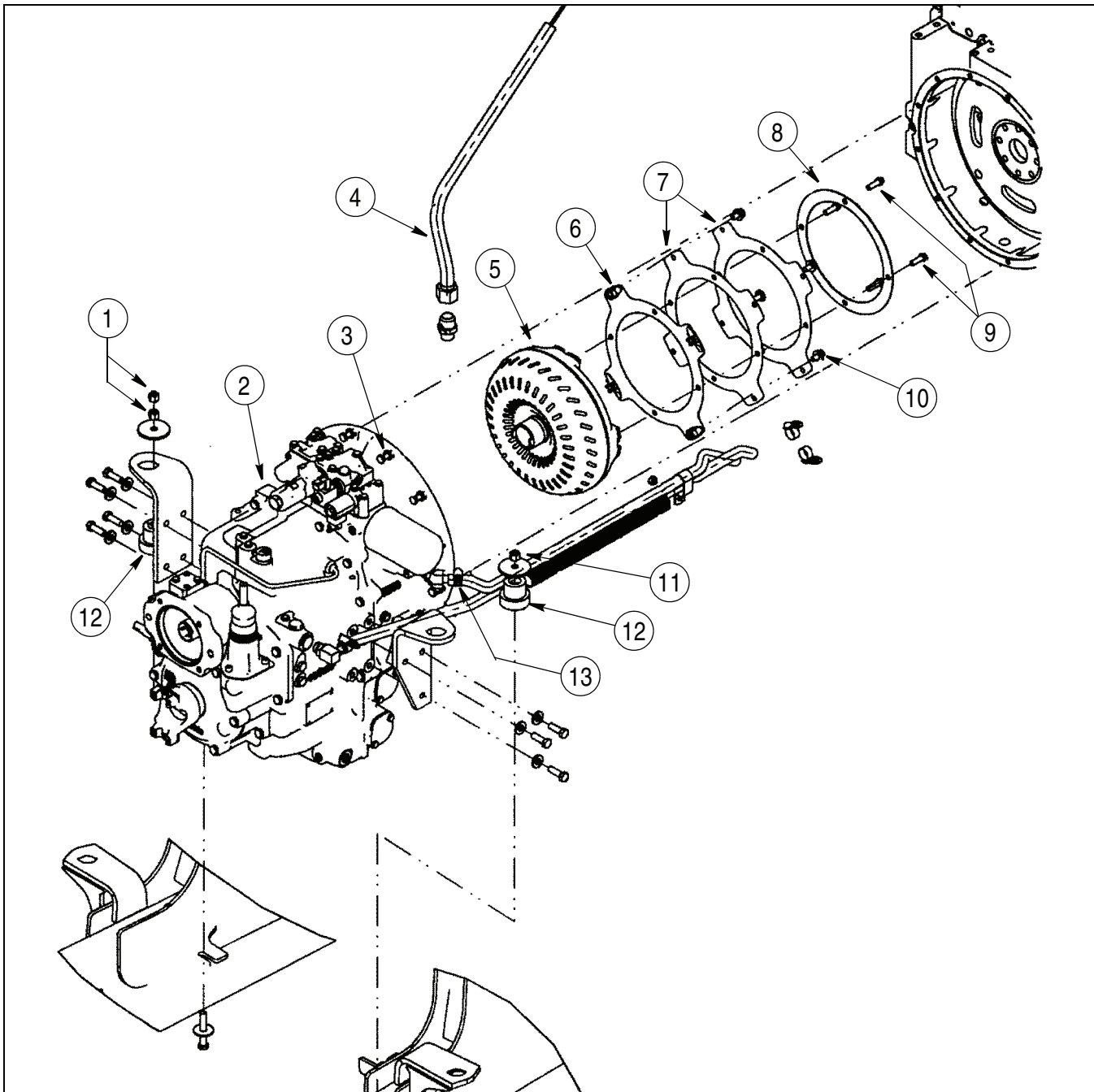
STEP 25

Remove both the left and right transmission mounting cap screw.

NOTE: During installation tighten the transmission mounting cap screws to a torque of 90 to 100 Nm (67 to 73 pound-feet), install two nuts on the left mount.

STEP 26

Carefully slide the transmission away from the engine. Lower to the floor and remove from under the machine.



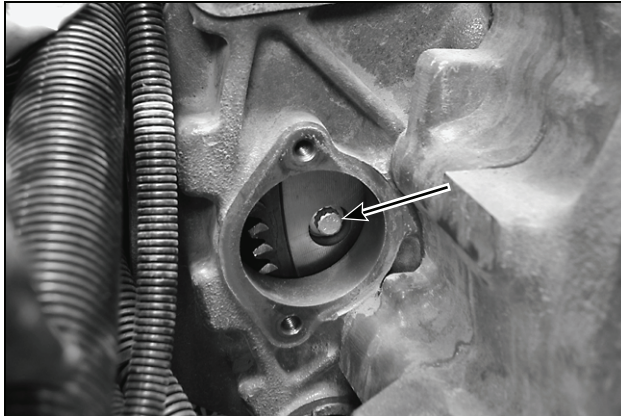
BS08B328

- | | |
|---|--|
| 1. NUT (2) 90 - 100 NM (67 - 73 LB-FT) | 8. BACKING PLATE |
| 2. TRANSMISSION | 9. CAP SCREW (4) 52 - 57 NM (38 - 42 LB-FT) |
| 3. BOLT (12) 52 - 57 NM (67 - 73 LB-FT) | 10. BOLT (4) 52 - 57 NM (38 - 42 LB-FT) |
| 4. DIPSTICK TUBE | 11. NUT 90-100 NM (67 - 73 LB-FT) |
| 5. CONVERTER | 12. RUBBER TRANSMISSION MOUNT (2) |
| 6. FLEX PLATE WITH CAGED NUT | 13. CONSTANT TORQUE CLAMP (4) 5.6 - 7.9 NM (50 - 70 IN-LB) |
| 7. FLEX PLATE | |

Installation

NOTE: Install the transmission is the reverse of removal.

STEP 27



BD03K033

NOTE: Rotate the torque converter through the bottom hole of the bell housing and slide it against the adapter plate. Align the bolt hole with the bosses on the torque converter.

STEP 28

Install and hand tighten all four cap screws that fasten the flywheel to the torque converter.

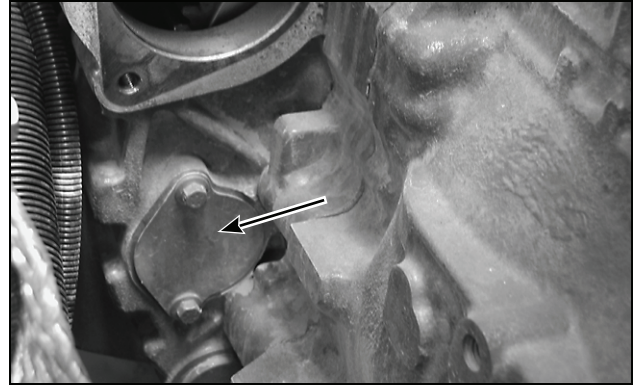
STEP 29

Final torque the cap screws to 52 to 57 Nm (38 to 42 pound-feet).

STEP 30

Remove the engine turning tool.

STEP 31



BD03K031

Install the access cover on the bell housing. Install the starter on the engine.

IMPORTANT: Before starting the engine do the following.

STEP 32

Make sure the transmission drain plug has been installed and tightened.

STEP 33

Fill the transmission, see page 3 for capacities.

NOTE: If removed, Install the rear wheels. See Section 6003 and tighten the rear wheel mounting nuts.

STEP 34

Remove the stands from under the machine and lower the machine to the floor.

STEP 35

With the machine parked on level ground and the engine running at low idle, check the transmission oil level. The oil level must be between the ADD and the FULL marks on the dipstick. If the oil level is at the ADD mark, add oil as required until the oil level is at the FULL mark.