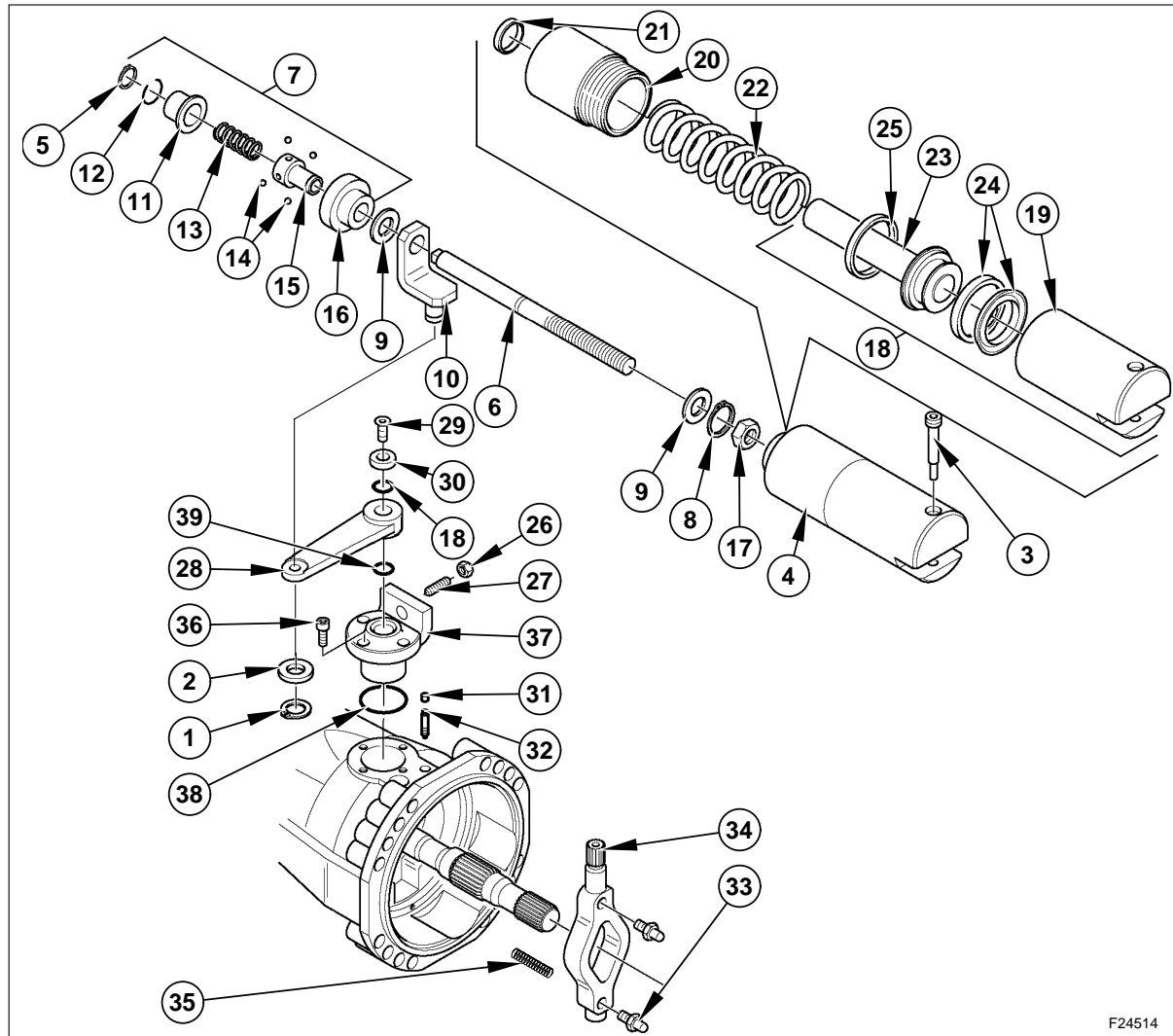


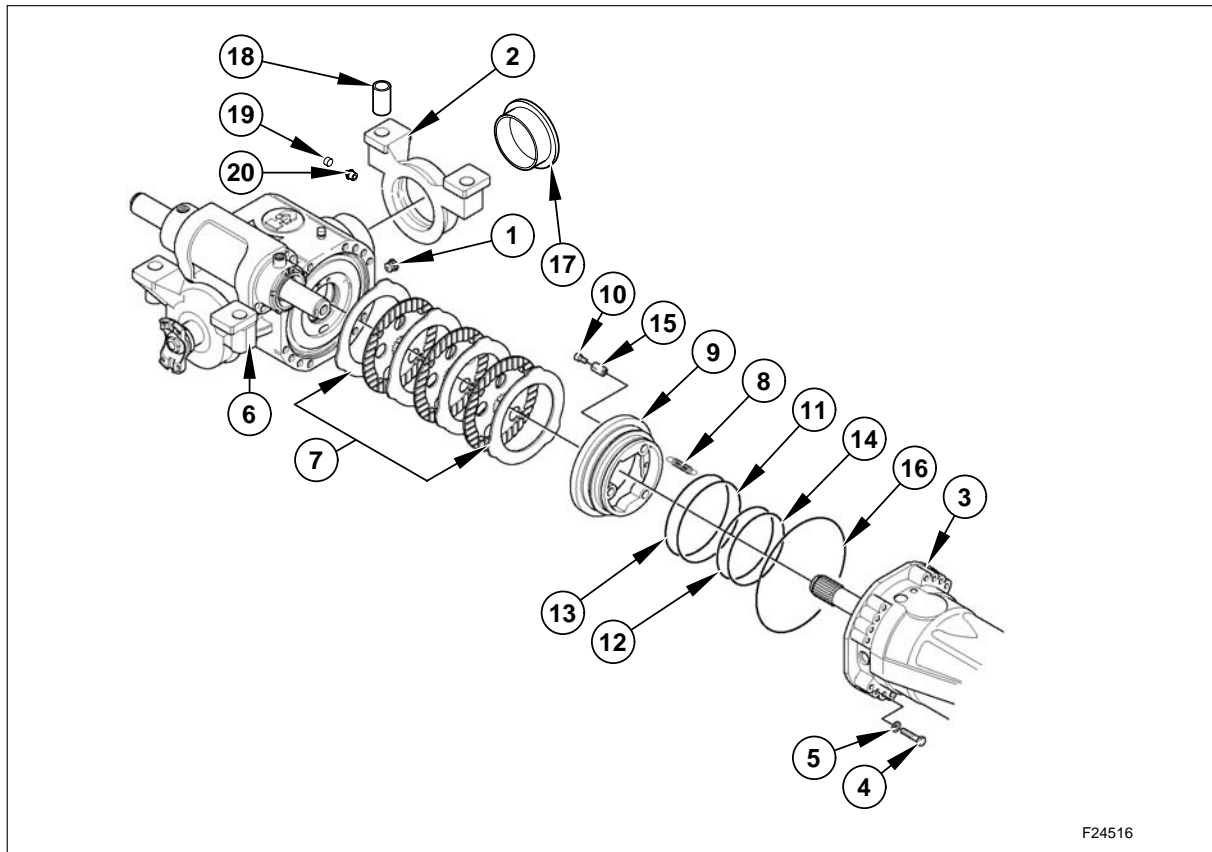
**OUTER NEGATIVE HYDRAULIK BRAKE  
(REAR AXLE ONLY)**

The rear axle is equipped with a braking system acting directly on the steering device.

This system consists of an hydraulic negative brake located outside of the axle body and directly connected to the steering cylinder.

This brake is also equipped with a quick release system.



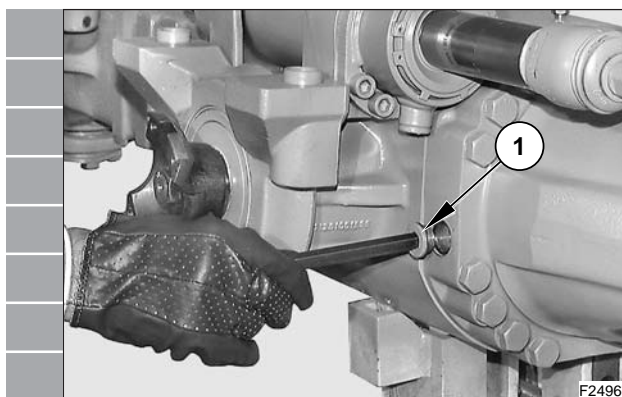
**BRAKING UNIT**

1. Plug
2. Swinging support
3. Side arm
4. Screw
5. Washer
6. Central body
7. Brake discs
8. Spring
9. Piston
10. Pin
11. O-ring
12. O-ring
13. Back-up ring
14. Back-up ring
15. Springs
16. O-ring
17. Bushing
18. Bushing
19. Grease nipple
20. Plug

**Disassembling****WARNING**

*Perform all operation on both arms.*

1. Remove the oil level plug (1).

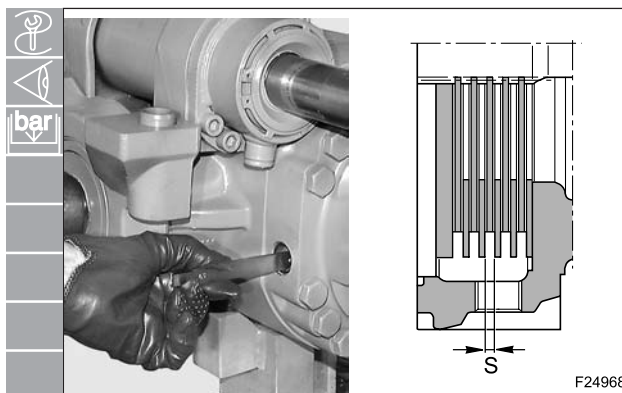


F24967

2. Apply the brakes and, keeping them under pressure, check the linings "S" between the disks using tool 75301741.  
"S" minimum: 4.5 mm

**WARNING**

*Replace the braking discs and the intermediate discs on both sides if necessary.*

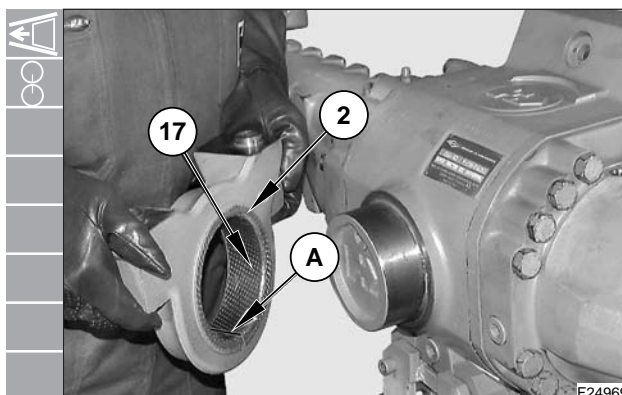


F24968

3. Remove the swinging support (2) on the side opposite the drive.

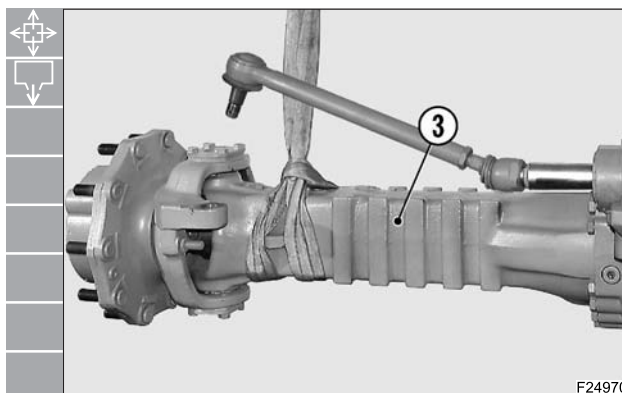
**NOTE:**

*if the bushing (17) is worn and needs replacing, note down the assembly side of the connection notch (A).*



F24969

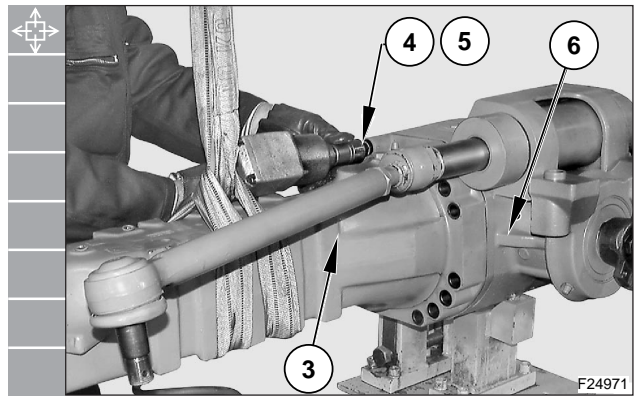
4. Disconnect the pins of the steering bars from the steering case (See "HOW TO REMOVE THE STEERING CYLINDER"). Sling the arm (3) to be removed and put the rod under slight tension.



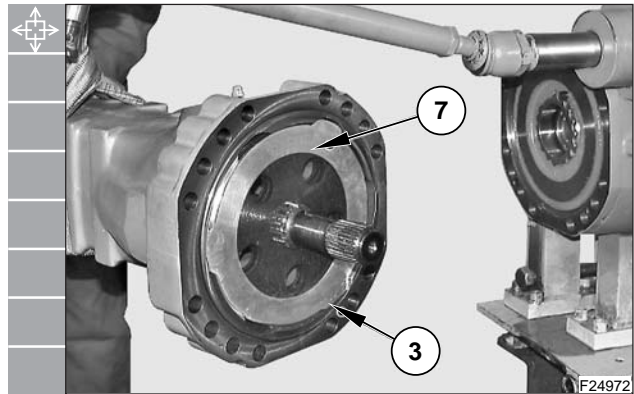
F24970

## AXLES

5. Unloose and remove the screws (4) and the washers (5) that fix the arm (3) to the central body (6).



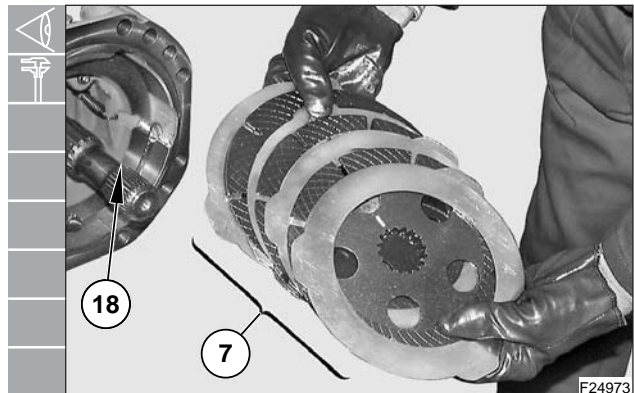
6. Remove the arm (3) together with the pack of braking discs (7). Place the arm on a bench.



7. Remove the braking discs (7) and note down their order of assembly.

**NOTE:**

1. *If the discs do not need replacing, avoid switching their position.*
2. *Extract the u-joint (18).*



8. Remove the springs (8) from the piston (9).

**NOTE:**

*if the springs (8) are weak or deformed they must be replaced.*

