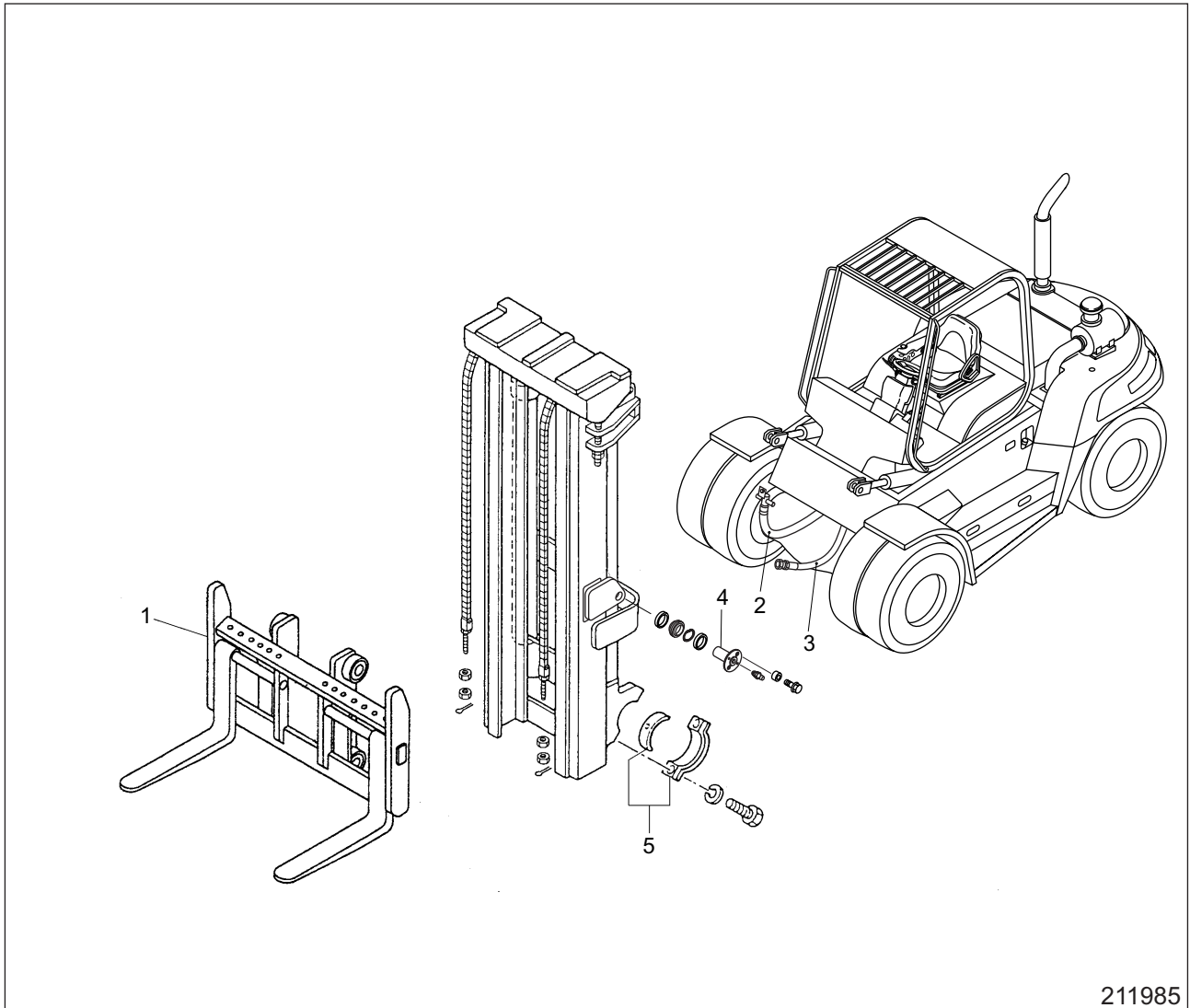


3.2 DP90N Mast and lift bracket assembly



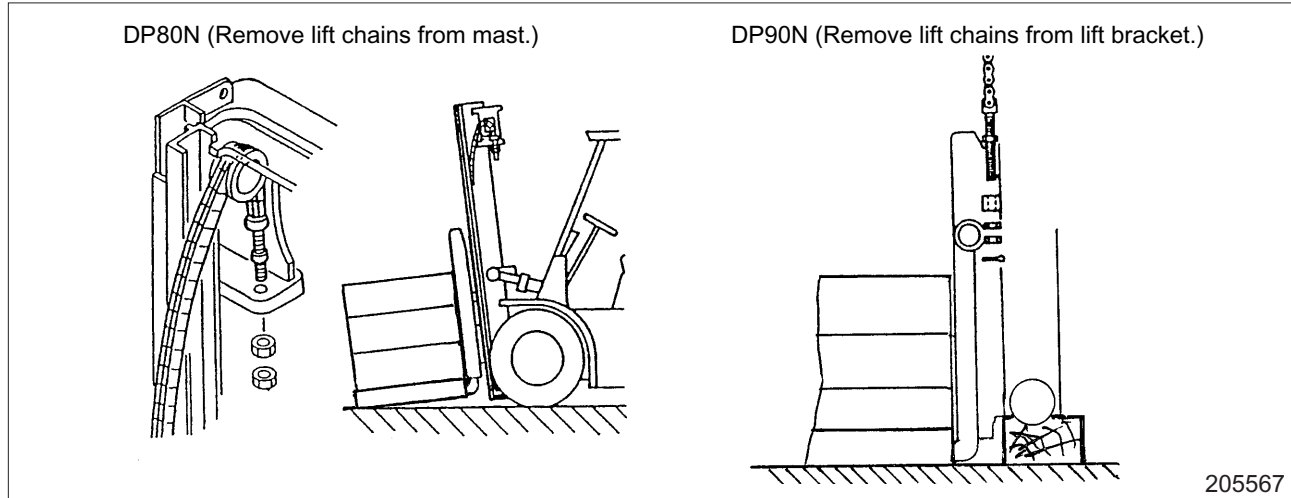
3.3 Removal sequence

- | | |
|--|-------------------------------------|
| 1 Fork, Lift bracket | 4 Tilt cylinder pin |
| 2 Lift cylinder low-pressure return hose | 5 Mast support bearing cap, Bushing |
| 3 Lift cylinder high-pressure hose | |

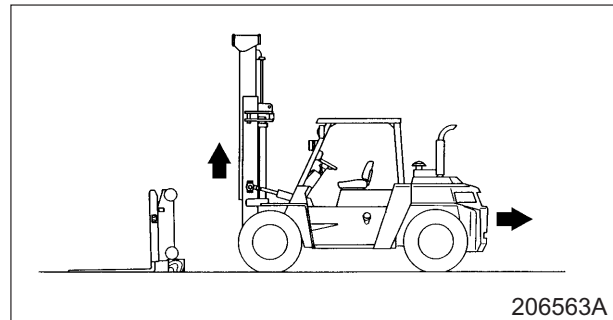
3.4 Suggestions for Removal

1. Removing lift bracket

- (1) Remove the split pins from the lift chain, and remove the anchor nut and lock nut.



- (2) Bind the end of the lift chain with a rope, etc. Leave an approximately 3 m (9.8 ft) long extras at the ends of the rope.
- (3) Start the engine and raise the inner mast up to a position where the main rollers of the lift bracket come off.
- (4) During this step, maintain the lift chain pulled downward.
- (5) Lift the inner mast until it comes to a position where the main rollers of lift bracket can be removed, then reverse the truck to separate the lift bracket from the truck.
- (6) Lower the inner mast and stop the engine.



2. Removing lift cylinder low-pressure return hose

- (1) Start the engine and raise the mast to the highest position. Then, stop the engine and disconnect the hose. Remove the hose at the return connector side.
- (2) Lower the mast.

3. Removing lift cylinder high-pressure hose

- (1) Operate the lift lever to remove the remaining pressure in the lift cylinder hydraulic lines, and disconnect the high-pressure hose from the joint to the flow regulator valve and the elbow of the lift cylinder.

