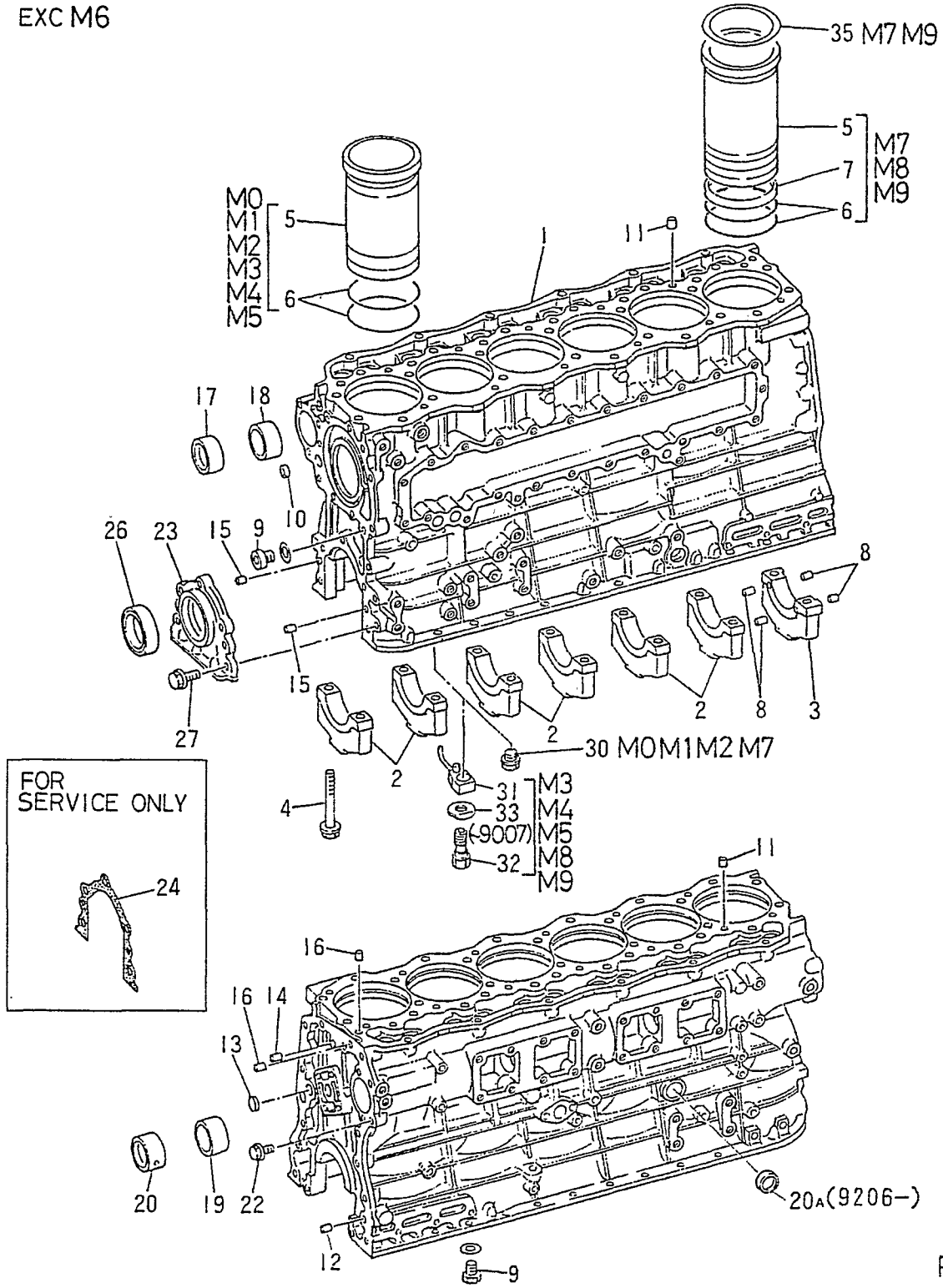


グループ インデックス
GROUP INDEX

WV...Winterize Version

グループ番号 Group No.	グループ名称 Group Name	頁 Page	適用機種一覧表 Table of applicable models			
			E120	E120 WV	E140	E140 WV
050-111A	STARTER (INNER PARTS)	155	M0	M0	M0	M0
050-130D	ALTERNATOR GENERAL	159	M3	M3	M3	M3
050-131D	ALTERNATOR (INNER PARTS)	163	M1	M1	M1	M1
0 9 0 ENGINE SPECIAL EQUIPMENT						
090-200B	INSTRUMENT	167	M2	M2	M2	M2
2 5 0 OTHER ENGINE PARTS						
250-400A	EXHAUST PIPE	171	M0	M0	M0	M0
250-415A	EXHAUST MUFFLER	173	M1	M1	M1	M1
3 9 0 NAME PLATE						
390-700C	NAME PLATE	175	M1	M1	M1	M1
4 5 0 REPAIR PARTS (FOR SERVICE ONLY)						
450-800A	CYLINDER BLOCK REPAIR KIT	177	M1	M1	M1	M1
450-810A	CYLINDER HEAD REPAIR KIT	183	M0	M0	M0	M0
450-880B	LINER & PISTON KIT	187	M0	M0	M0	M0
450-890A	ENGINE GASKET KIT	191	M2	M2	M2	M2
PROD. ENGINE NO. COMBINATION FOR REPLACEABILITY		197				
PARTS NO. INDEX		199				

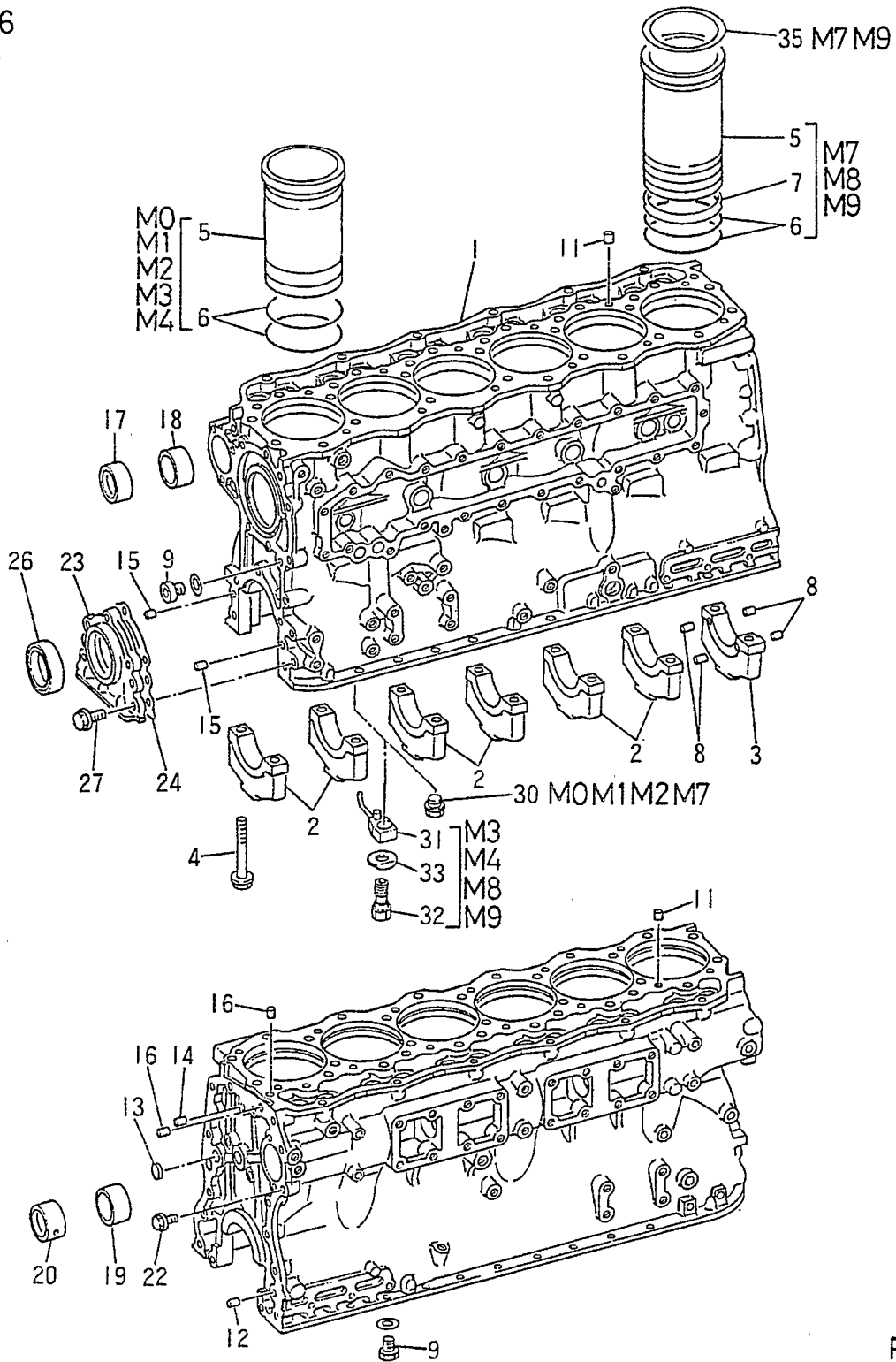
EXC M6



RAA

020-110A

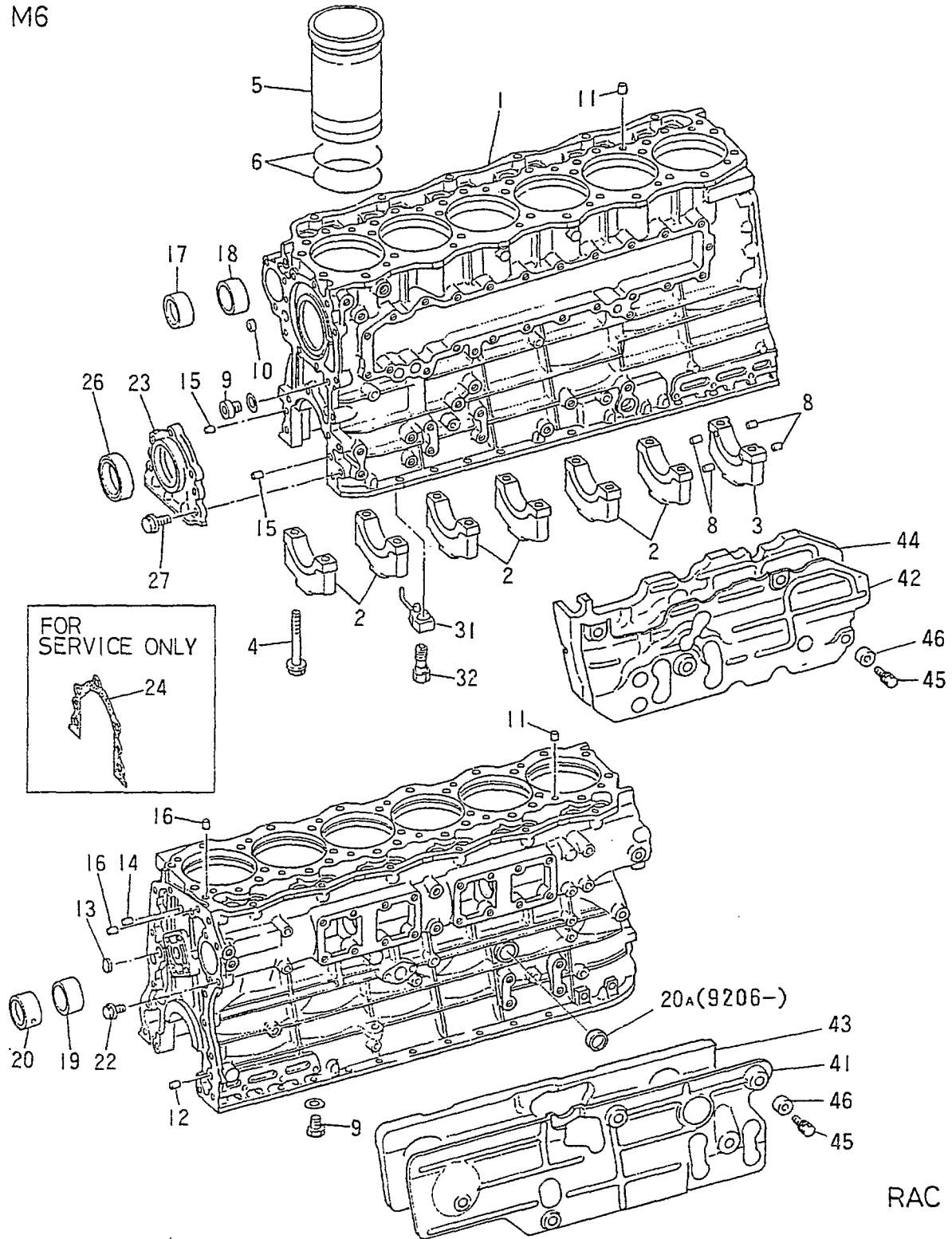
EXC M6
(-8912)



RAB

020-110A

M6



020-110A
CYLINDER BLOCK

M0:E120
E140
M1/M2/M3/M4:Non-Applicable
M5/M6/M7/M8/M9:Non-Applicable

見出番号 Key No.	部品名称および記述 Part Name & Description		変 更 性 C R H P	適用機種および個数 Models & Q'ty									専用 ECL	切換時期および備考 Prod. Date & Remarks		
	パーツ・コードおよび仕様 Part Code & Spec.	部品番号 Part No.		M0	M1	M2	M3	M4	M5	M6	M7	M8			M9	
	6D14Z ALL(EXC JA11,KT75,76)			*												
	6D14Z-JA11				*											
	6D14Z-KT75,76(CIS)					*										
	6D14T ALL						*									
	(EXC PT-JS11,NH13,CT-JS75)							*								
	6D14PT-JS11(JG)								*							
	6D14T-JS75(CIS)									*						
	6D14T-NH13										*					
	6D15Z ALL											*				
	6D15T-YJ11,KT13												*			
	6D15T ALL(EXC YJ11,12,KT13)													*		
1	CRANKCASE	*		1	1	1	1	1	1	1	1	1	1	1	1	CF GN450-800A
2	CAP,BRG,FR & MI	*		6	6	6	6	6	6	6	6	6	6	6	6	CF GN450-800A
3	CAP,BRG,RE	*		1	1	1	1	1	1	1	1	1	1	1	1	CF GN450-800A
4	BOLT,MAIN CAP 14X108			14	14	14	14	14	14	14	14	14	14	14	14	
		ME031865														
5	LINER,CYL															
	A SIZE	ME071198		C	C	C	C		C	C						
	A SIZE	ME070865							C							P (JG)
	A SIZE	ME071063										C		C		
	A SIZE	ME047573											C		P	
	B SIZE	ME071199		6	6	6	6		6	6						
	B SIZE	ME070866						6							P	
	B SIZE	ME071064										6		6		
	B SIZE	ME047574											6		P	
	C SIZE	ME071200		C	C	C	C		C	C						
	C SIZE	ME070867							C							
	C SIZE	ME071065										C		C		
6	O-RING		20	12	12	12	12	12	12	12	12	12	12	12	12	9206-
		MH035633														
		ME031605	1	12	12	12	12	12	12	12	12	12	12	12	12	-9205

020-110A
CYLINDER BLOCK

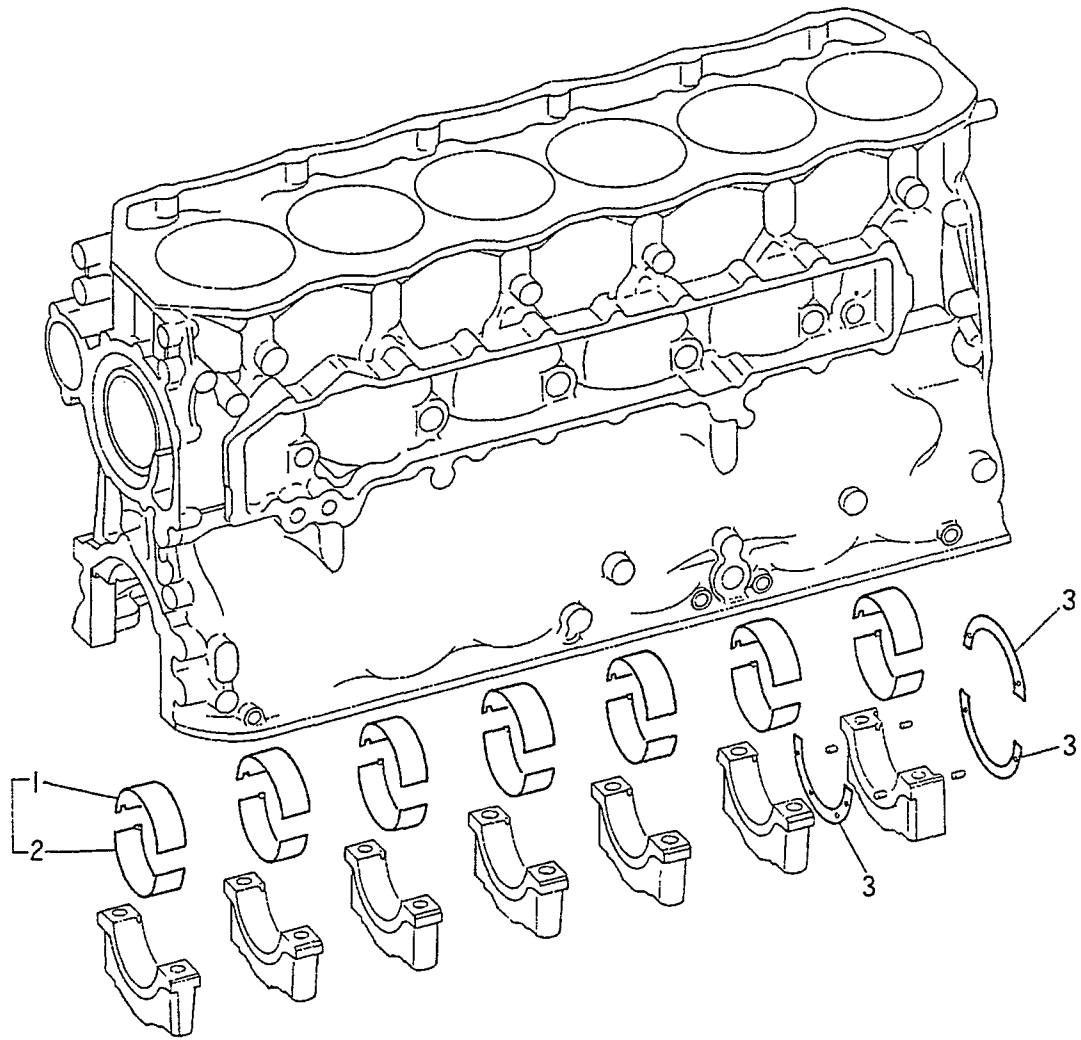
M0:E120
E140
M1/M2/M3/M4:Non-Applicable
M5/M6/M7/M8/M9:Non-Applicable

見出番号 Key No.	部品名称および記述 Part Name & Description		変 更 日 C.R. H.P.	適用機種および個数 Models & Q'ty									切換時期および備考 Prod. Date & Remarks		
	パーツ・コードおよび仕様 Part Code & Spec.	部品番号 Part No.		M0	M1	M2	M3	M4	M5	M6	M7	M8		M9	
		ME031610									1	2	1	2	
7	PACKING	ME071066									6	6	6		
8	PIN,SPG 4X10	MH012041		6	6	6	6	6	6	6	6	6	6		
9	PLUG 20	MH037137		2	2	2	2	2	2	2	2	2	2		
	GASKET 20	MF660068		2	2	2	2	2	2	2	2	2	2		
10	CAP,SEALING 15	MH037760	A	1	1	1	1	1			1	1	1		9001-
		MH037760									1	1			
11	PIN,SPG 10X20	MH012024		2	2	2	2	2	2	2	2	2	2		
12	PIN,DOWEL 12X34	MH007011		1	1	1	1	1	1	1	1	1	1		
13	CAP,SEALING 18	MF665535		1	1	1	1	1	1	1	1	1	1		
14	PIN,DOWEL 12X17	MH007010		1	1	1	1	1	1	1	1	1	1		
15	PIN,DOWEL 8X18	MF472404		2	2	2	2	2	2	2	2	2	2		
16	PLUG 6.5X8	MH037082		2	2	2	2	2	2	2	2	2	2		
17	BUSHING,CAMSHAFT NO.1	ME071141		1	1	1	1	1	1	1	1	1	1		
18	BUSHING,CAMSHAFT NO.2	ME071142		1	1	1	1	1	1	1	1	1	1		
19	BUSHING,CAMSHAFT NO.3	ME071143		1	1	1	1	1	1	1	1	1	1		
20	BUSHING,CAMSHAFT NO.4	ME071862	20	1	1	1	1	1	1	1	1	1	1		9206-
		ME071144	1	1	1	1	1	1	1	1	1	1	1		-9205
20A	CAP,SEALING 30	MF665540	A	1	1	1	1	1	1	1	1	1	1		9206-
22	BOLT,FLANGE 10X20	MH000713		5	5	5	5	5	5	5	5	5	5		
23	COVER,FR	ME031048		1	1	1	1	1	1	1	1	1	1		
24	GASKET,FR COVER	ME031049		1	1	1	1	1	1	1	1	1	1		FOR SERVICE ONLY
	AF	ME071268		1											FOR SERVICE ONLY
26	OILSEAL,FR	ME071269	2#	1		1	1					1			8809-
		ME031543	1	1		1	1					1			-8808
		ME071269		1						1	1				
		ME047530	2#	1										P	8809-

020-110A
CYLINDER BLOCK

M0:E120
E140
M1/M2/M3/M4:Non-Applicable
M5/M6/M7/M8/M9:Non-Applicable

見出番号 Key No.	部品名称および記述 Part Name & Description		変 更 日 C.R D.P	適用機種および個数 Models & Qty									切 替 用 ECL	切替時期および備考 Prod. Date & Remarks	
	パーツ・コードおよび仕様 Part Code & Spec.	部品番号 Part No.		M0	M1	M2	M3	M4	M5	M6	M7	M8			M9
		ME032752	1		1									P	-8808
		ME047530								1				P	
		ME071269	2#								1				8809-
		ME031543	1									1			-8808
27	BOLT, FLANGE 12X25	MH000843		5	5	5	5	5	5	5	5	5	5		
30	PLUG	MH037763		6	6	6						6			
31	BODY, OIL JET	ME071501	2#			6	6	6				6	6		9008-
		ME071069	1			6	6	6				6	6		-9007
		ME071501									6				
32	VALVE, CHECK	ME051712	2#			6	6	6				6	6		9008-
		ME031518	1			6	6	6				6	6		-9007
		ME051712									6				
33	WASHER, LOCK	ME031086	D			6	6	6				6	6		-9007
35	SHIM														
	T=0.05	ME030823										C	C		FOR SERVICE ONLY
	T=0.10	ME030824										C	C		FOR SERVICE ONLY
41	CRANKCASE COVER ASSY														
	RH	ME071800	2Y								1				9206-
	RH	ME071439	1									1			-9205
42	CRANKCASE COVER ASSY														
	LH	ME071807	20									1			9206-
	LH	ME071436	1										1		-9205
43	INSULATOR, RH	ME071700	2Y										1		9206-
		ME071441	1										1		-9205
44	INSULATOR, LH	ME071643	2X										1		9206-
		ME071438	1										1		-9205
45	BOLT, W/WSR 8X25	MF247893											9		
46	SPACER L=9.3	ME013290											9		



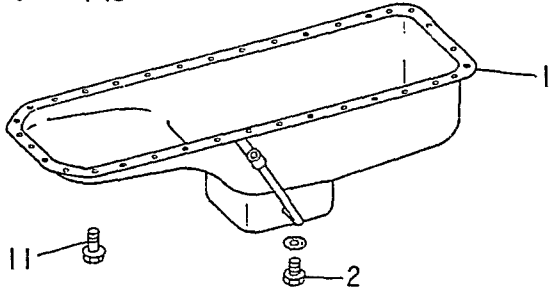
RAA

020-120A
CRANKSHAFT BEARING

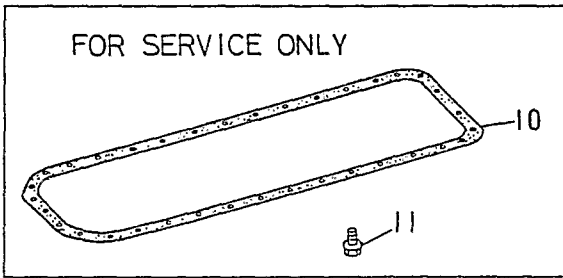
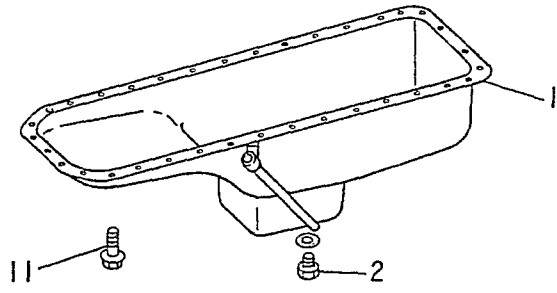
MO:E120
E140

見出番号 Key No.	部品名称および記述 Part Name & Description		変換 更替 C.R. H.P	適用機種および個数 Models & Q'ty					適用 E.C.I	切換時期および備考 Prod. Date & Remarks
	パーツ・コードおよび仕様 Part Code & Spec.	部品番号 Part No.		M	Q					
1-2	ALL			*						
	MAIN BEARING SET, ONE MODEL									
	STD	ME999199		1						
	US 0.25	ME999200		C						
	US 0.50	ME999201		C						
	US 0.75	ME999202		C						
	US 1.00	ME999203		C						
1	BEARING, MAIN UPPER									
	STD	※		7						(ME030903)
2	BEARING, MAIN LOWER									
	STD	※		7						(ME030908)
3	PLATE, THRUST									
	STD	ME071163		3						
	OS 0.15	ME071164		C						
	OS 0.30	ME071165		C						
	OS 0.45	ME071166		C						

M0 M1 M9



M4



RHA

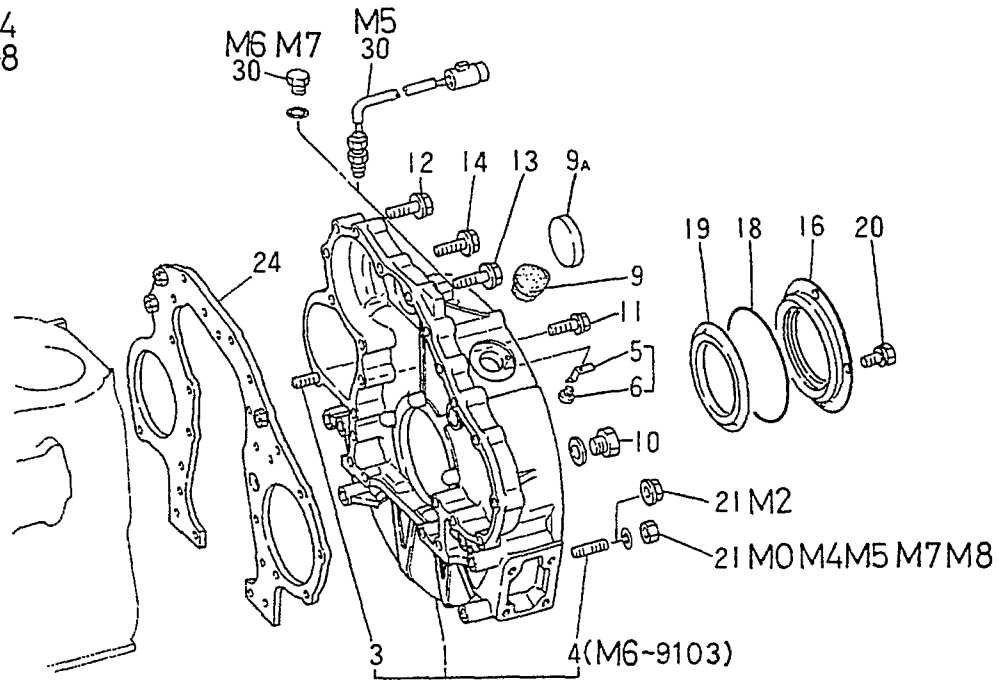
020-150H
OIL PAN

M1:E120
E140
M0/M4/M9:Non-Applicable

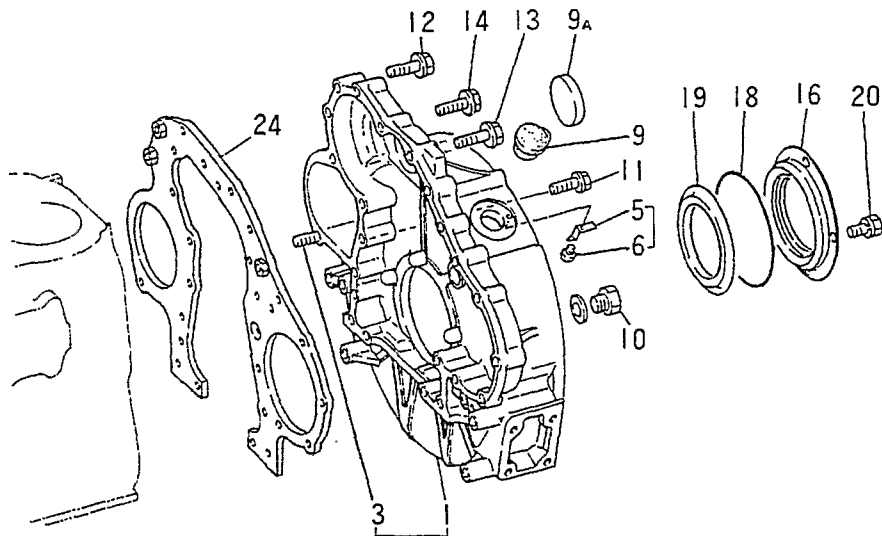
見出番号 Key No.	部品名称および記述 Part Name & Description		変 更 性 C. R. H. P	適用機種および個数 Models & Q'ty					特 用 E.C.I	切換時期および備考 Prod. Date & Remarks
	パーツ・コードおよび仕様 Part Code & Spec.	部品番号 Part No.		M	Q	M	M	M		
	HY,14Z,T-MR			*						
	6D14,14T,15T-CKT			*						
	14T-MY<000>,14T-KS,16T-KS			*						
	14Z-JA15,16			*						
	15Z-TD				*					
	14Z-JA11					*				
1	PAN,OIL	3181392100		1	1	1			P	
		ME032902				1			P	
2	PLUG	MH037126		1	1	1	1			
	GASKET 18	MH035018		1	1	1	1			
10	GASKET,OIL PAN	ME034652		1	1	1				FOR SERVICE ONLY
	AF	ME074103				1				FOR SERVICE ONLY
11	BOLT,FLANGE 8X18	MF140224		35	35	35	35			
	BOLT,FLANGE 8X20	MF140225		35	35	35	35			FOR SERVICE ONLY
	** AVAILABLE IN SET WITH			*	*	*	*			
	ME034652,MF140225			*	*	*	*			
	ME074103,MF140225 **			*	*	*	*			

020-160A

M0 M1 M2 M4
M5 M6 M7 M8



M3



RAA

020-160A
FLYWHEEL HOUSING

M1:E120
E140
M0/M2/M3/M4:Non-Applicable
M5/M6/M7/M8:Non-Applicable

見出番号 Key No.	部品名称および記述 Part Name & Description		変力 換 更 性 C.R. H.P.	適用機種および個数 Models & Q'ty								切 替 ECL	切換時期および備考 Prod. Date & Remarks
	パーツ・コードおよび仕様 Part Code & Spec.	部品番号 Part No.		M0	M1	M2	M3	M4	M5	M6	M7		
	14Z-KT, 14T-KS, MY, 15T-KS12 14Z, T-NH11, 12(8811-), 15Z-TD 14T-NH13(-9201), OT, 14Z-HE 15T-YJ01<511>, 14PT-JS12<000> 14T-UH, ED, 14Z, T, 16Z-WK			*	*	*	*	*	*	*	*		
	JA 14Z, T, 16Z-ST, TM, SP, MR, BE 14Z, T-NH11, 12(-8810), 15Z-KT AR, NM 14Z, T-NS, 14T-SJ, HE, WKT 16Z-DY(-9101) 15Z-JS11, 16Z-JS11			*	*	*	*	*	*	*	*		
	14Z, T-ES 14PT-JS11, 16Z-JS01, 16CT-JS12 15T-YJ11, 12, KS11, 14CT, 15CT-KT 15T-YJ01<000, 111, 512> 16Z-DY(9102-) 14T-NH13(9202-)			*	*	*	*	*	*	*	*		
	14T-TD			*	*	*	*	*	*	*	*		
1-6	FLYWHEEL HOUSING ASSY												
	M10X1.5	ME047617	3X	1	1	1						P	9103-
	M10X1.5	ME070723	20	1	1	1						P	8806-9102
	M10X1.5	ME070945	1	1	1	1						P	-8805
	M10X1.5	ME047618	3X			1						P	9103-
	M10X1.5	ME070724	20			1						P	8806-9102
	M10X1.5	ME070946	1			1						P	-8805
	M10X1.5	ME047619	3X			1						P	9103-
	M10X1.5	ME070725	20			1						P	8806-9102
	M10X1.5	ME070947	1			1						P	-8805
	M10X1.5	ME047622	3X			1						P	9103-

020-160A
FLYWHEEL HOUSING

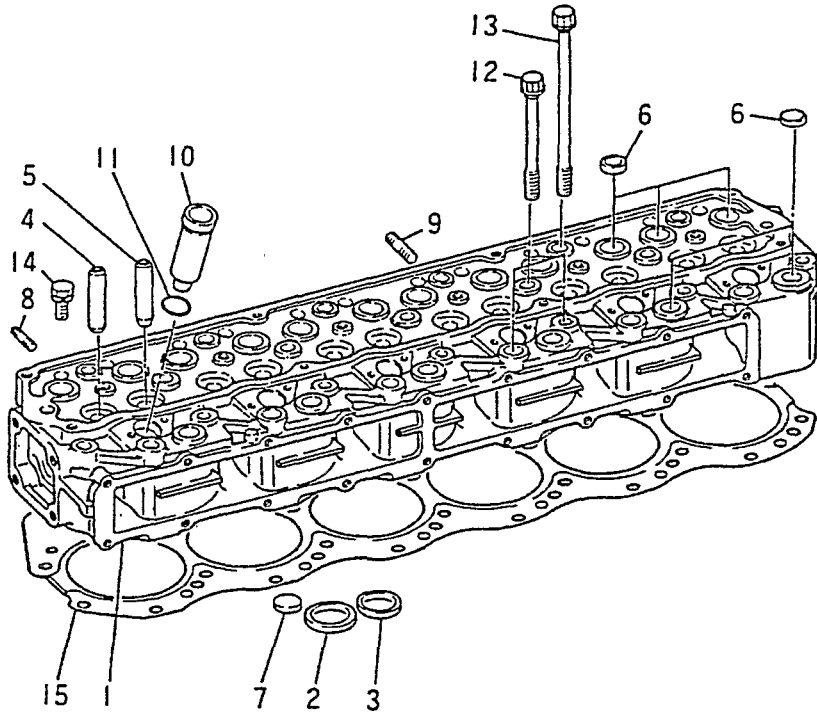
M1:E120
E140
M0/M2/M3/M4:Non-Applicable
M5/M6/M7/M8:Non-Applicable

見出番号 Key No.	部品名称および記述 Part Name & Description		変 更 性 C.R. H.P.	適用機種および個数 Models & Qty								切 替 時 期 E.C.I.	切換時期および備考 Prod. Date & Remarks	
	パーツ・コードおよび仕様 Part Code & Spec.	部品番号 Part No.		M0	M1	M2	M3	M4	M5	M6	M7			M8
	M10X1.5	ME070726	20							1			P	8806-9102
	M10X1.5	ME070948	1							1			P	-8805
	M10X1.5	ME047649	30							1			P	9104-
	M10X1.5	ME047622	2X							1			P	9103-9103
	M10X1.5	ME070726	1							1			P	-9102
1-3	FLYWHEEL HOUSING ASSY													
	M10X1.5	ME047622								1			P	
1-6	FLYWHEEL HOUSING ASSY													
	M10X1.5	ME047791	4Y								1		P	9206-
	M10X1.5	※	3X								1		P	9103-9205 (ME047617)
	M10X1.5	ME070723	20								1		P	8806-9102
	M10X1.5	ME070945	1								1		P	-8805
1	HOUSING, FLYWHEEL	※		1	1	1	1	1	1	1	1	1		
3	STUD, FOR STARTER 12X45	MF404578		1	1	1	1	1	1	1	1	1		
4	STUD 10X30	MF404548		12	12	12			12	12	12			
	STUD 10X40	MF404552						12						
	STUD 10X30	MF404548	D						12					-9103
5	POINTER	ME034823	2Y	1	1	1	1	1	1	1	1	1		8806-
		ME031062	1	1	1	1	1	1	1	1	1	1		-8805
		ME034823								1	1			
6	SCREW, W/WSR 5X10	MF350047		1	1	1	1	1	1	1	1	1		
9	PLUG, DUST	ME020359		1	1	1	1	1	1	1	1	1		
9A	CAP, SEALING	ME030870		1	1	1	1	1	1	1	1	1		
10	PLUG 20	MF665007		1	1	1	1	1	1	1	1	1		
	GASKET 20	MF660068		1	1	1	1	1	1	1	1	1		
11	BOLT, FLANGE 10X70	MH000723		8	8	8	8	8	8	8	8	8		
12	BOLT, FLANGE 10X55	MH000716		5	5	5	5	5	5	5	5	5		
13	BOLT, FLANGE 10X65	MH000712		1	1	1	1	1	1	1	1	1		
14	BOLT, FLANGE 10X50	MH000709		1	1	1	1	1	1	1	1	1		

020-160A
FLYWHEEL HOUSING

M1:E120
E140
M0/M2/M3/M4:Non-Applicable
M5/M6/M7/M8:Non-Applicable

見出番号 Key No.	部品名称および記述 Part Name & Description		変力 増 更 削 C R H P	適用機種および個数 Models & Q'ty								適用 ECL	切替時期および備考 Prod. Date & Remarks	
	パーツ・コードおよび仕様 Part Code & Spec.	部品番号 Part No.		M0	M1	M2	M3	M4	M5	M6	M7			M8
16	OILSEAL, RE	ME034976		1	1	1	1	1	1	1	1	1		
18	PACKING, RUBBER	3110702401		1	1	1	1	1	1	1	1	1		
19	SLINGER, OILSEAL RE	ME030857		1	1	1	1	1	1	1	1	1		
20	BOLT, W/WSR 8X16	MF241251		5	5	5	5	5	5	5	5	5		
21	NUT, FLANGE 10	MF434105				12								
	NUT 10	MF430006		12				12	12		12	12		
	WASHER, SPG 10	MF450406		12				12	12		12	12		
24	PLATE, RE D=136.5	ME071270	20	1	1	1	1	1	1	1	1	1		8909-
	D=136.5	ME071093	1	1	1	1	1	1	1	1	1	1		-8908
30	SENSOR, SPEED	MC845235							1					
	PLUG 16	M0001300								1	1			
	GASKET 16	MF660066								1	1			



020-200A
CYLINDER HEAD

M0:E120
E140

M1/M2/M3/M5/M6/M7/M9: Non-Applicable

見出番号 Key No.	部品名称および記述 Part Name & Description		変 更 種 別 C R H P	適用機種および個数 Models & Q'ty							専用 ECL	切換時期および備考 Prod. Date & Remarks		
	パーツ・コードおよび仕様 Part Code & Spec.	部品番号 Part No.		M0	M1	M2	M3	M5	M6	M7			M9	
	'88 6D14Z ALL(EXC JA11)			*										
	'88 6D14T ALL				*									
	6D15Z ALL					*								
	'88 6D15T ALL(EXC YJ11)						*							
	'88 6D16Z ALL							*						
	'88 6D16T ALL								*					
	6D15T-YJ11(-89MY)									*				
	6D14Z-JA11(-89MY)										*			
1	HEAD,CYLINDER	*			1	1	1	1	1	1	1	1	1	CF GN450-810A
2	INSERT,VALVE SEAT INLET				6	6	6	6	6	6	6	6	6	
	ME071109													
	ME071002					6								
	ME071111							6						
	SEMI SIZE ME071110				C	C	C	C	C	C	C	C	C	
	SEMI SIZE ME071003						C							
	SEMI SIZE ME071112							C						
3	INSERT,VALVE SEAT EXH				6	6	6	6	6	6	6	6	6	9001-
	ME071303		2Y		6	6	6	6	6	6	6	6	6	
	ME071218		1		6	6	6	6	6	6	6	6	6	-8912
	ME031933						6							
	ME071307		2Y					6						9001-
	ME071216		1					6						-8912
	SEMI SIZE ME071302		2Y		C	C	C	C	C	C	C	C	C	9001-
	SEMI SIZE ME071219		1		C	C	C	C	C	C	C	C	C	-8912
	SEMI SIZE ME031934						C							
	SEMI SIZE ME071306		2Y					C						9001-
	SEMI SIZE ME071217		1					C						-8912
4	GUIDE,VALVE INLET	ME031886			6	6	6	6	6	6	6	6	6	
5	GUIDE,VALVE EXH	ME031888			6	6	6	6	6	6	6	6	6	
6	CAP,SEALING 25	MS666137			18	18	18	18	18	18	18	18	18	

020-200A
CYLINDER HEAD

M0:E120
E140

M1/M2/M3/M5/M6/M7/M9:Non-Applicable

見出番号 Key No.	部品名称および記述 Part Name & Description		変 更 C R I P	適用機種および個数 Models & Q'ty							時期 ECL	切替時期および備考 Prod. Date & Remarks
	パーツ・コードおよび仕様 Part Code & Spec.	部品番号 Part No.		M0	M1	M2	M3	M5	M6	M7		
7	CAP, SEALING 22	MS666136		5	5	5	5	5	5	5		
8	STUD 8X20	MH002111		1	1	1	1	1	1	1		
9	STUD 10X33	MH002175	2Y	12	12	12	12	12				8902-
		MH002169	1	12	12	12	12	12				-8901
		MH002175						12	12			
10	TUBE, NOZZLE	ME030855		6	6	6	6	6	6	6		
11	O-RING, TUBE	MH035157		6	6	6	6	6	6	6		
12	BOLT, CYL HEAD 14X139	ME031606		20	20	20		20	20			
		14X129						20	20			
13	BOLT, CYL HEAD 14X198	ME031607		6	6	6		6	6			
		14X192						6	6			
14	BOLT, W/WSR 10X32	MF300846		6	6	6	6	6	6	6		
15	GASKET, CYL HEAD	ME071326	2Y	1	1							9001-
		ME071232	1	1	1							-8912
		ME030913			1	1						
		ME071328	3Y					1				9001-
		ME071285	20					1				8903-8912
		ME071212	1					1				-8902
		ME071286	20					1				8903-
		ME071234	1					1				-8902
		ME047571						1			P	
	AF	ME071299						1				