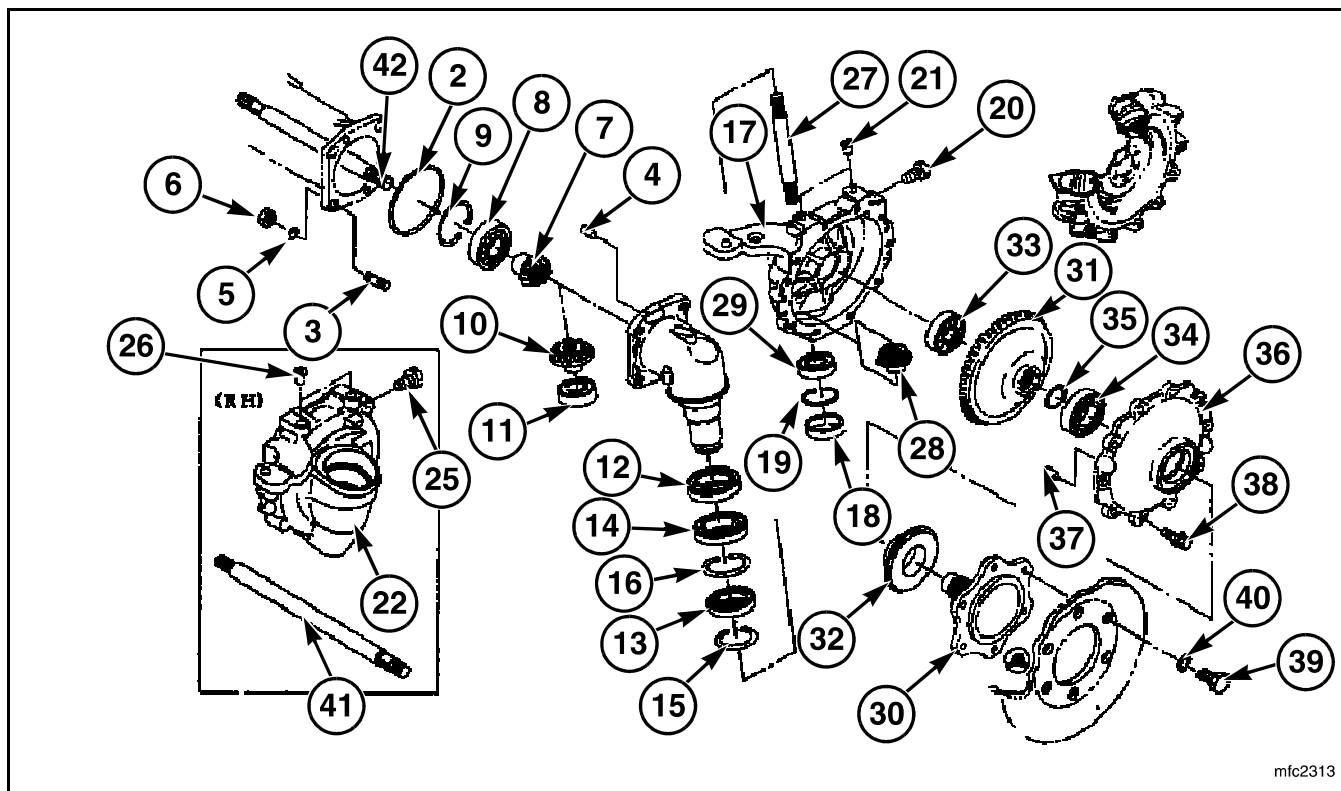


Front Axle



mfc2313

FIG. 4

FIG. 4: Final gear case system (F Type).

- | | |
|-------------------------------|----------------------|
| (1) Final Case | (22) RH Final Case |
| (2) O-Ring | (23) Seal |
| (3) Stud Bolt | (24) Snap Ring |
| (4) Pin | (25) Seal Plug Screw |
| (5) Lock washer | (26) Cap |
| (6) Nut | (27) Shaft |
| (7) Bevel Gear 12T | (28) Bevel Gear 10T |
| (8) Bearing | (29) Ball Bearing |
| (9) Snap Ring | (30) Wheel Shaft |
| (10) Bevel Gear 17T | (31) Bevel Gear 48T |
| (11) Ball Bearing | (32) Water Seal |
| (12) Oil Seal Assembly | (33) Bearing |
| (13) Bearing | (34) Bearing |
| (14) Bearing | (35) Snap Ring |
| (15) Snap Ring | (36) Wheel Cover |
| (16) Snap Ring | (37) Pin |
| (17) LH Final Case | (38) Bolt |
| (18) Seal | (39) Bolt |
| (19) Snap Ring | (40) Lock Washer |
| (20) Plug, Screw, Seal 1/4 PT | (41) Shaft |
| (21) Cap | (42) Shaft |

DISASSEMBLY

Final case and related parts.

Remove the tire on the side of which final case is to be disassembled.

NOTE: Support the tractor front with a garage jack.

Remove the final case from the axle end.



CAUTION: Take care not to damage the O-ring. Never attempt to insert the blade of a screwdriver between the contact surfaces of the final case and axle end.

FIG. 5: Separate the wheel cover from the final case.

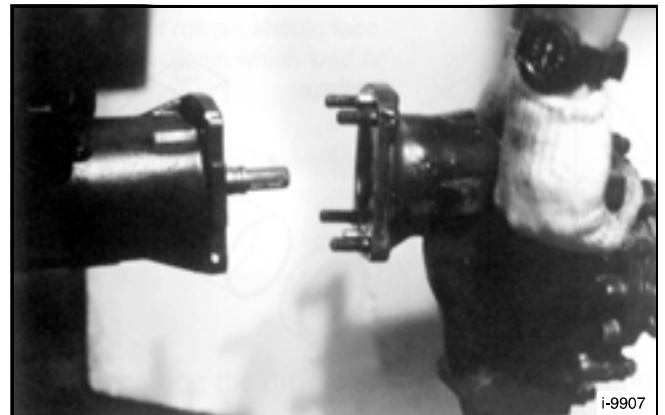


FIG. 5

FIG. 6: Remove the cap and snap ring.

Divide the final case assembly into the final case (A) and final case (B).

Remove the wheel gear bearing using a puller.

Remove the snap ring and drive out the wheel shaft with a plastic hammer.

In this stage, the wheel shaft oil seal can be checked.

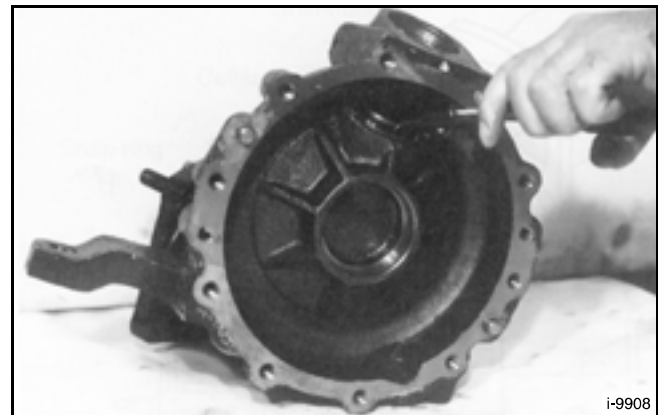


FIG. 6

Differential and Related Parts

Separate the front axle from the front axle bracket referring to chapter two.

Pull off the right and left shafts.

Remove the oil seal for the input shaft.