

TECHNICAL DATA

0

DIAGNOSTICS

1

CHASSIS

2

SHOCK ABSORBERS

3

STABILISERS AND TORQUE RODS

4

LEAF SUSPENSION

5

CONTENTS

	Page	Date
1. CHASSIS.....	1-1.....	200735
1.1 General	1-1.....	200735
2. SHOCK ABSORBERS, STABILISERS, TORQUE RODS AND SUSPENSION	2-1.....	200735
2.1 General	2-1.....	200735
2.2 Tightening torques.....	2-4.....	200735

1. CHASSIS

1.1 GENERAL

Chassis materials

Type	Chassis type	Material
LF	All	KF 450

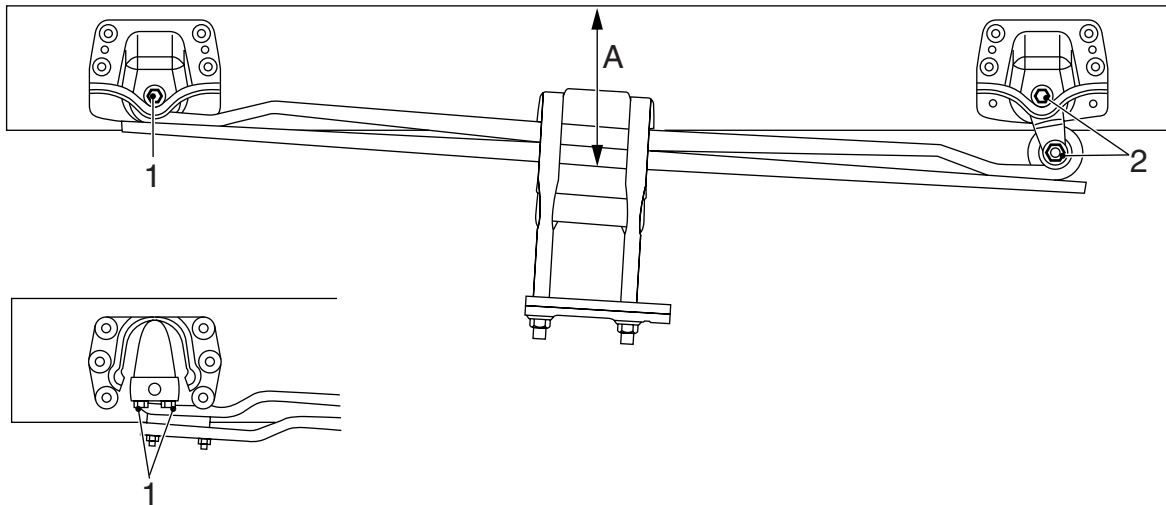
Note:
KF 450 is a 'High-Tensile Strength' steel grade.

2. SHOCK ABSORBERS, STABILISERS, TORQUE RODS AND SUSPENSION

2.1 GENERAL

Fixing the attachment bolts for the leaf spring

When fixing the attachment bolts for the leaf spring, ensure that the leaf spring is at the specified distance (A). Distance (A) is to be measured above the axle, between the top edge of the chassis cross member and the underside of the spring leaf.



C9 00 409

Front axle

MODEL	DISTANCE (A)	
	frontmost attachment point (1)	rearmost attachment point (2)
LF45 all models	404 mm	459 mm
LF45 all models	502 mm	566 mm

Rear axle

MODEL	DISTANCE (A)
LF45 7.5 tonnes GVW	295 mm
LF45 7.5 tonnes GVW Asymmetric	295 mm
LF45 10-12 tonnes GVW	327 mm
LF45 10-12 tonnes GVW Asymmetric	295 mm
LF55 13 -15 tonnes GVW	391 mm
LF45 13-15 tonnes GVW Asymmetric	362 mm
LF55 16 -18 tonnes GVW	414 mm
LF55 16-18 tonnes GVW Tipper version	391 mm
LF45 16-18 tonnes GVW Asymmetric	362 mm

Shock absorbers, stabilisers, torque rods and suspension

LF45/55 series

0

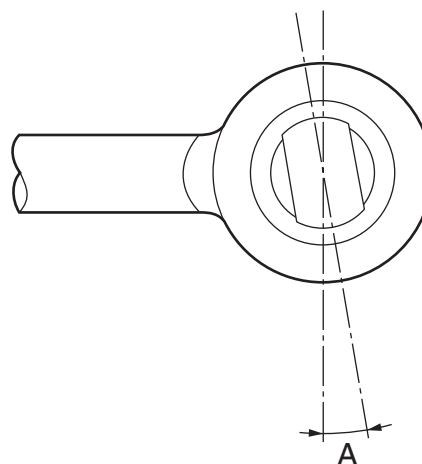
Note:

For the rear axle, height (A) applies to both the frontmost (1) and the rearmost (2) attachment point of the leaf spring.

Transverse guide torque rod of air-suspended rear axle LF45

Fitting angle (A) for mounting rubber on rear axle side

8 - 12 °

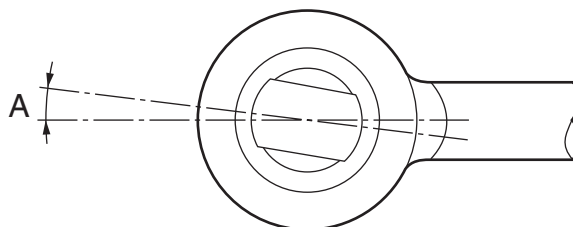


C9 00 408

Stabiliser bar of leaf-sprung rear axle

Fitting angle (A) for silentblock

7 °



C900584

Torque rod stabiliser length (A)

A is the centre-to-centre distance between the attachment points.

Front axle

LF45 all models

342 - 344 mm

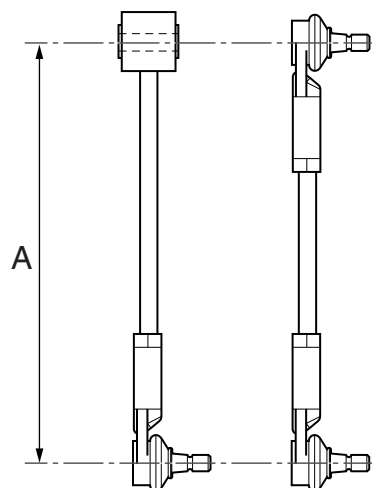
LF45 all models

348 - 352 mm

Rear axle

LF55 FAN steered rear axle

598 - 602 mm



C9 00 413

Shock absorbers, stabilisers, torque rods
and suspension

LF45/55 series

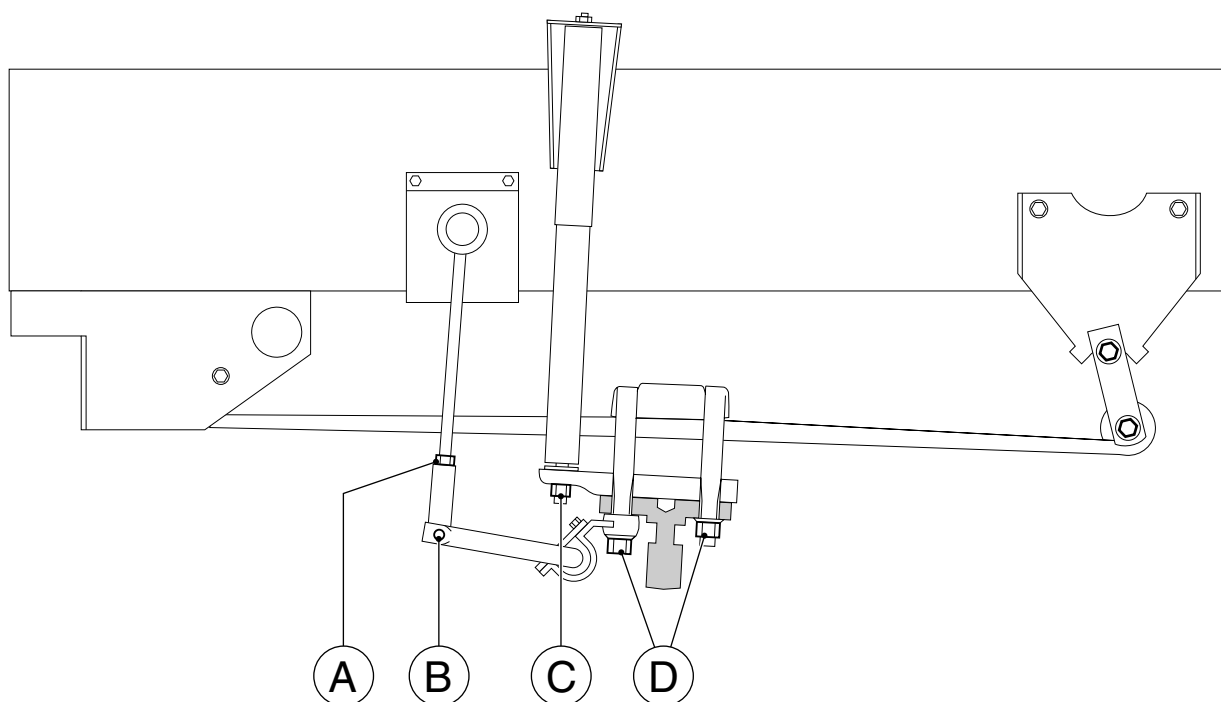
0

2.2 TIGHTENING TORQUES

The tightening torques stated in this section are different from the standard tightening torques stated in the overview of the standard tightening torques. The other threaded connections not specified must therefore be tightened to the torque stated in the overview of standard tightening torques.

Unless stated otherwise, when attachment bolts and nuts are replaced, it is important that these bolts and nuts are of exactly the same length and property class as those removed.

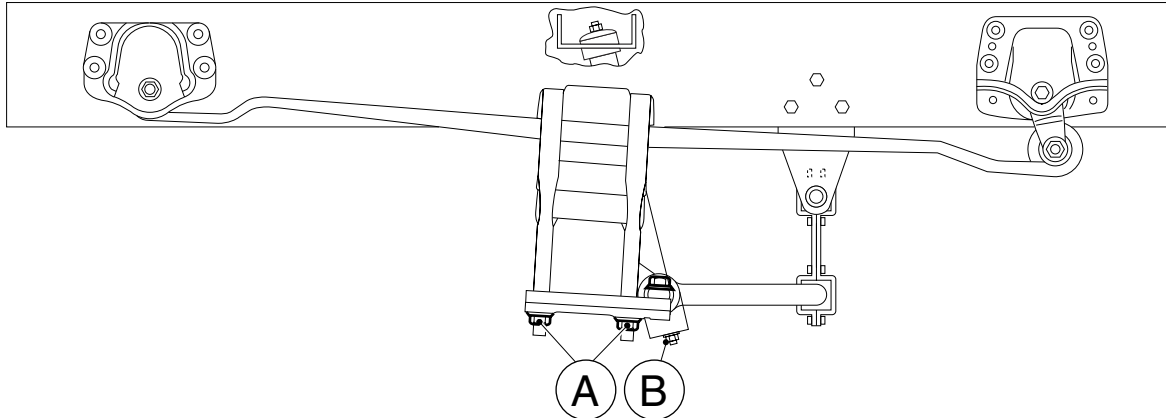
Front axle, leaf-sprung, LF45



C900588

A	Torque rod lock nut	135 Nm
B	Stabiliser lock nut	80 Nm
C	Shock absorber self-locking nut M14 x 2	52 Nm
D	U-bolt nut	215 Nm ⁽¹⁾

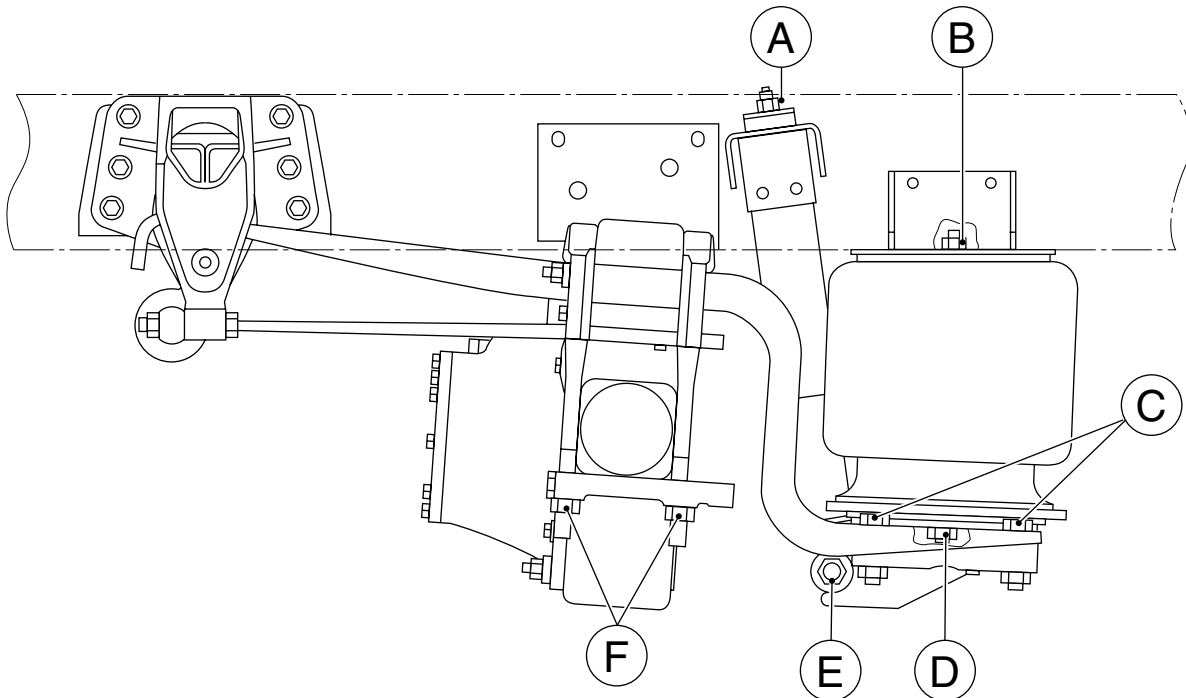
(1) Evenly tighten the two U-bolt nuts alternately.

LF45/55 series**Shock absorbers, stabilisers, torque rods
and suspension****Rear axle, leaf-sprung, LF45**

C900627

A	U-bolt nut	468 Nm ⁽¹⁾
B	Shock absorber lock nut	55 Nm

(1) Evenly tighten the two U-bolt nuts alternately.

Rear axle, air suspension, LF45

C900323-2

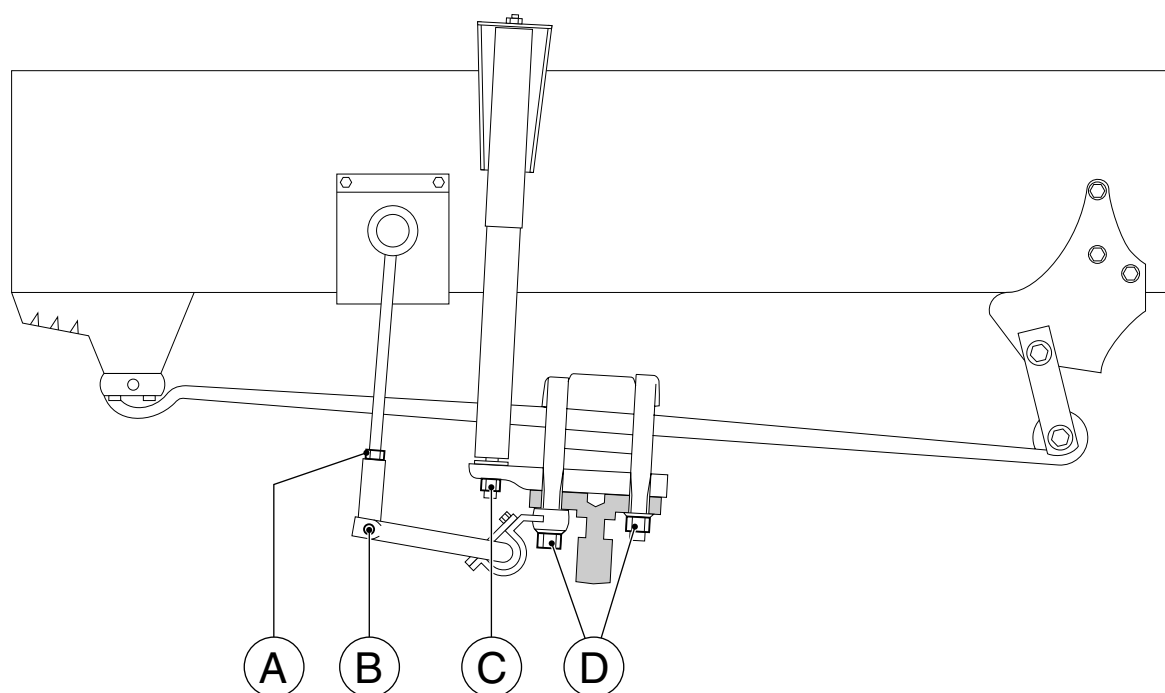
A	M14 attachment nut, shock absorber	52 Nm
B	Attachment nut M12, bellows	31 Nm
C	M20 attachment bolt	395 Nm
D	Attachment nut M12, air bellows	60 Nm
E	M20 shock absorber attachment bolt, property class 10.9	525 Nm
F	U-bolt nut	468 Nm ⁽¹⁾

(1) Evenly tighten the two U-bolt nuts alternately.

Shock absorbers, stabilisers, torque rods
and suspension

LF45/55 series

Front axle, leaf-sprung, LF55



C900587

A	Torque rod lock nut	80 Nm
B	Stabiliser lock nut	95 Nm
C	Shock absorber lock nut	55 Nm
D	U-bolt nut	

- if version 13-15 tonnes GVW

468 Nm ⁽¹⁾

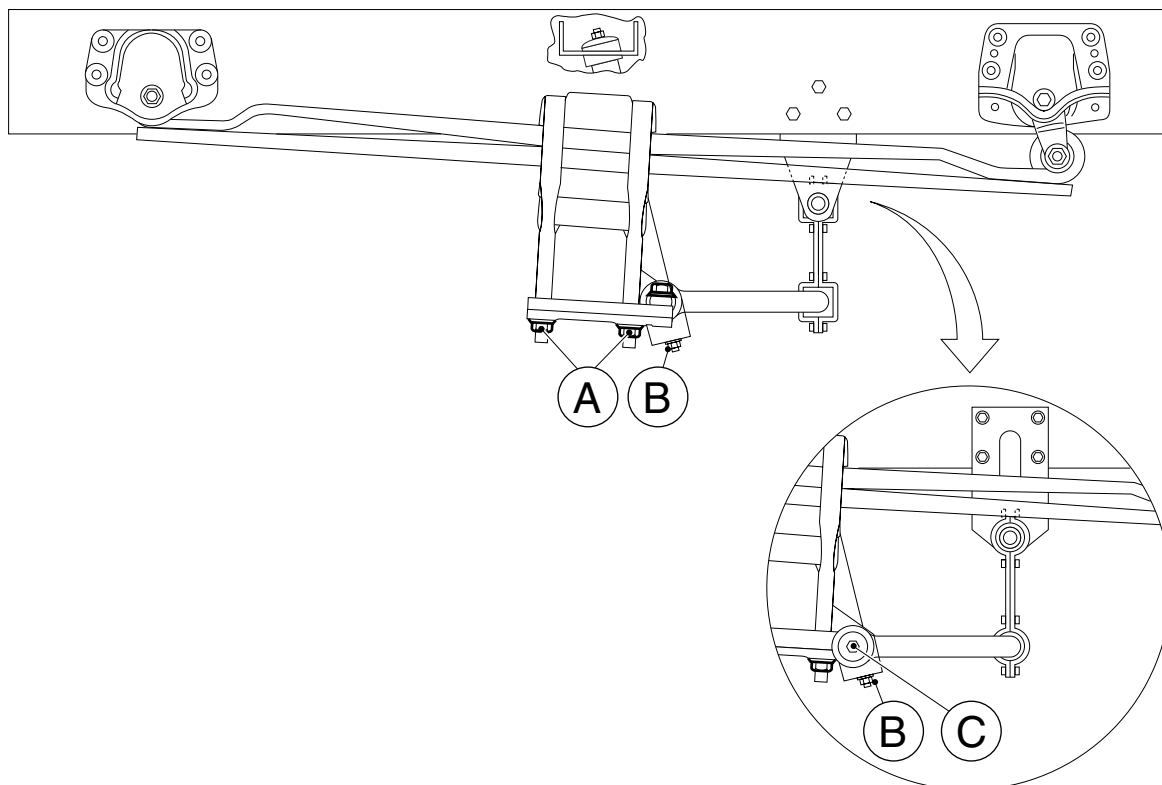
- if version 16-18 tonnes GVW

537 Nm ⁽¹⁾

(1) Evenly tighten the two U-bolt nuts alternately.

Rear axle, leaf-sprung, LF55

0



C900628

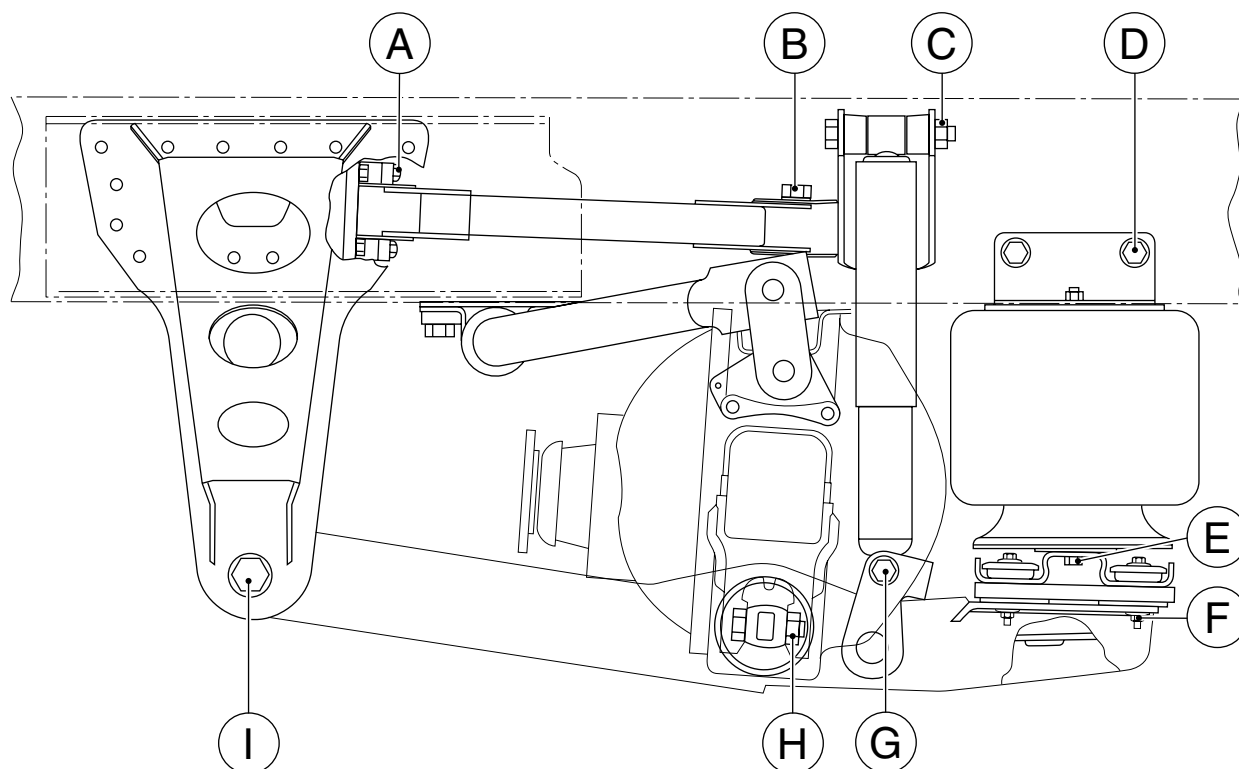
- | | | |
|---|--|-----------------------|
| A | U-bolt nut | |
| - | if version 13-15 tonnes GVW | 468 Nm ⁽¹⁾ |
| - | if version 16-18 tonnes GVW | 534 Nm ⁽¹⁾ |
| B | Shock absorber lock nut | 90 Nm |
| C | Stabiliser mounting bolt for 1132 axle, 16-18 tonnes GVW | 395 Nm |

(1) Evenly tighten the two U-bolt nuts alternately.

Shock absorbers, stabilisers, torque rods
and suspension

LF45/55 series

Rear axle, air suspension, LF55 13-15 tonnes
GVW



C900629

A	M20 attachment bolt, triangular link	395 Nm
B	M22 attachment nut, triangular link on differential	235 Nm
C	M20 attachment bolt, shock absorber	395 Nm
D	M20 attachment bolt, air bellows support	395 Nm
E	M20 attachment bolt, air bellows	31 Nm
F	M16 attachment bolt	285 Nm
G	M20 attachment bolt, shock absorber	395 Nm
H	Attachment bolt	385 Nm
I	Attachment bolt	
	- if M22 attachment bolt with break nut, nut break point	± 750 Nm
	- if M22 attachment bolt with nut	590 Nm