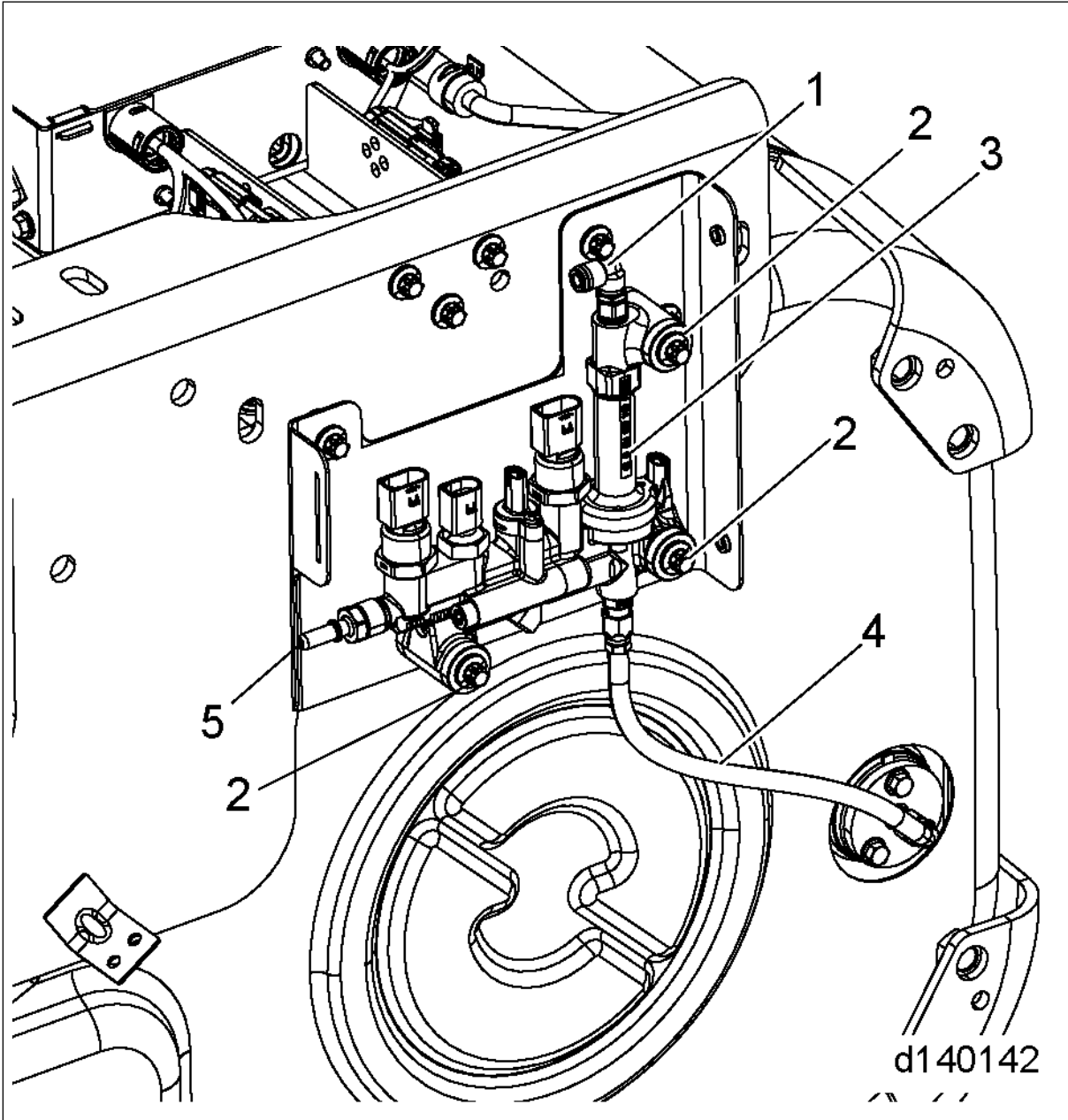


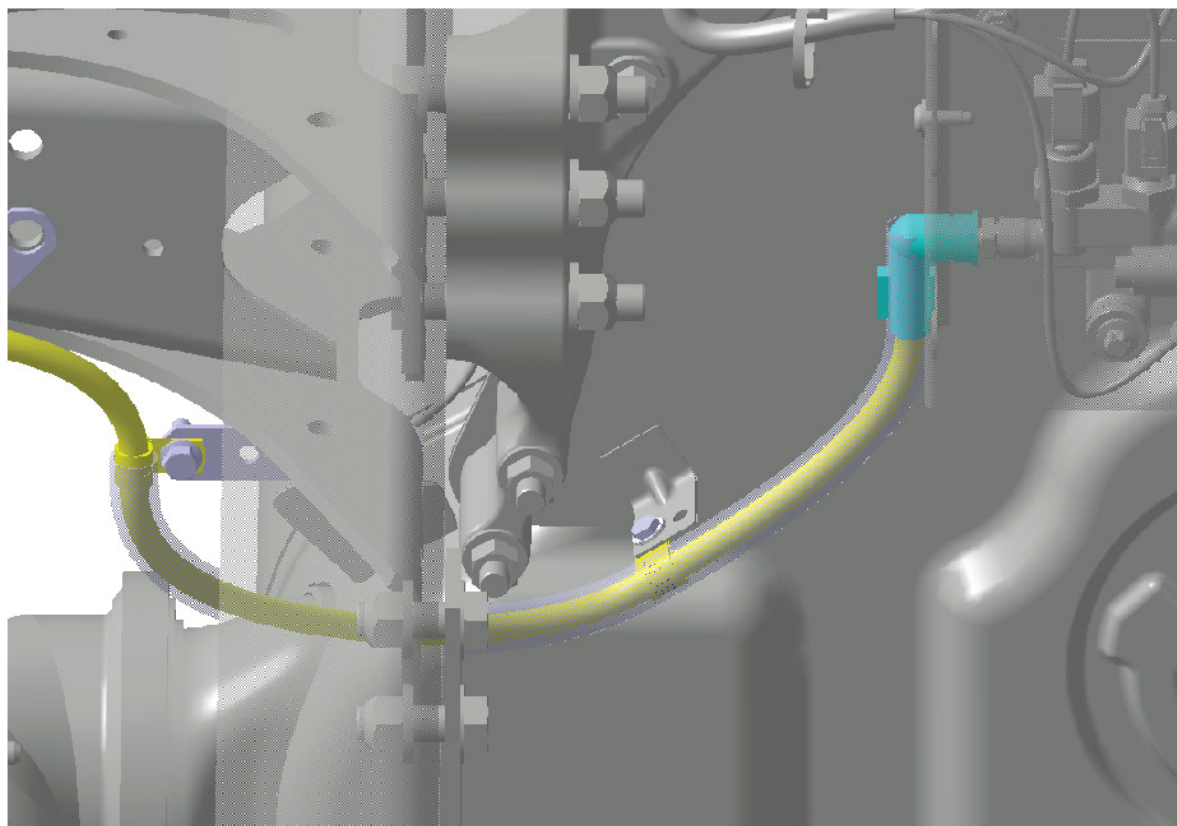
45.4 Installation of the Diesel Exhaust Fluid Metering Unit

Install as follows:

1. Install the Diesel Exhaust Fluid (DEF) metering unit to the mounting plate by installing the three bolts (2). Torque to 31-34 N·m (22-25 lb·ft).
2. Connect the DEF nozzle supply hose (4) to the DEF metering unit. Torque line nut to 15-17 N·m (11-12 lb·ft).



3. Connect the DEF feed line (5) to the DEF metering unit and to the mounting clip on the 1-BOX.
4. Ensure that the DEF feed line is routed correctly under the frame rail of the vehicle and is connected to the tab on the 1-BOX.



d140215

5. Connect the compressed air line connection (1) to the DEF metering unit by pushing it into the “quick-connect” connection.
6. Connect the six electrical harness connectors (1 - 6) to the DEF metering unit.