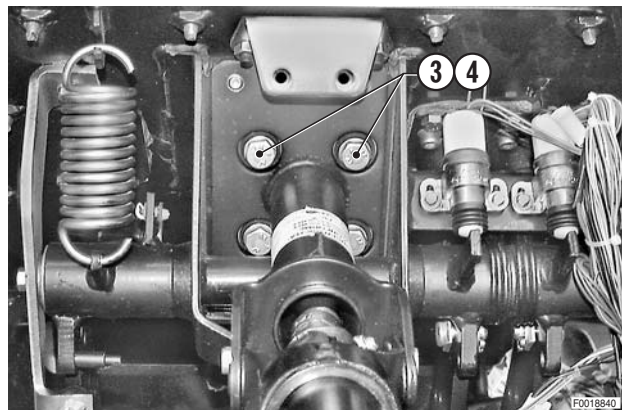


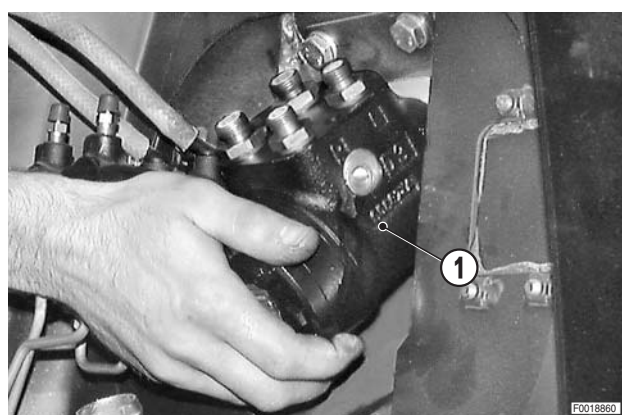
3 - Unscrew the retaining bolts (3) and washers (4).



4 - Remove the power steering unit (1).

- ★ If necessary, reposition the plate (5) with the relative bushes (6).

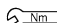
✖ 2



REFITTING THE POWER STEERING UNIT

- Refitting is the reverse of removal.

✖ 1

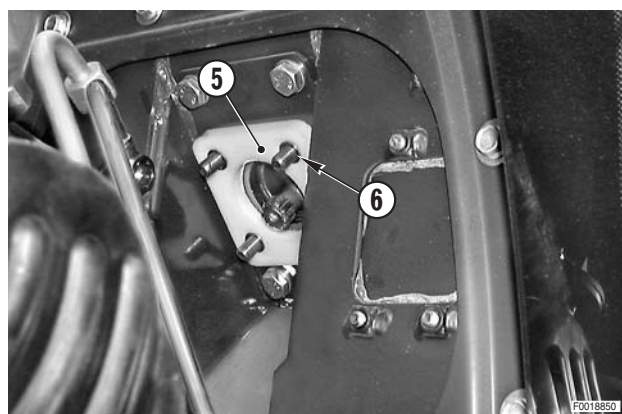
 Nm Pipe fittings: 60 Nm (44.2 lb.ft.)
Eye fitting: 29 Nm (21.4 lb.ft.)

✖ 2

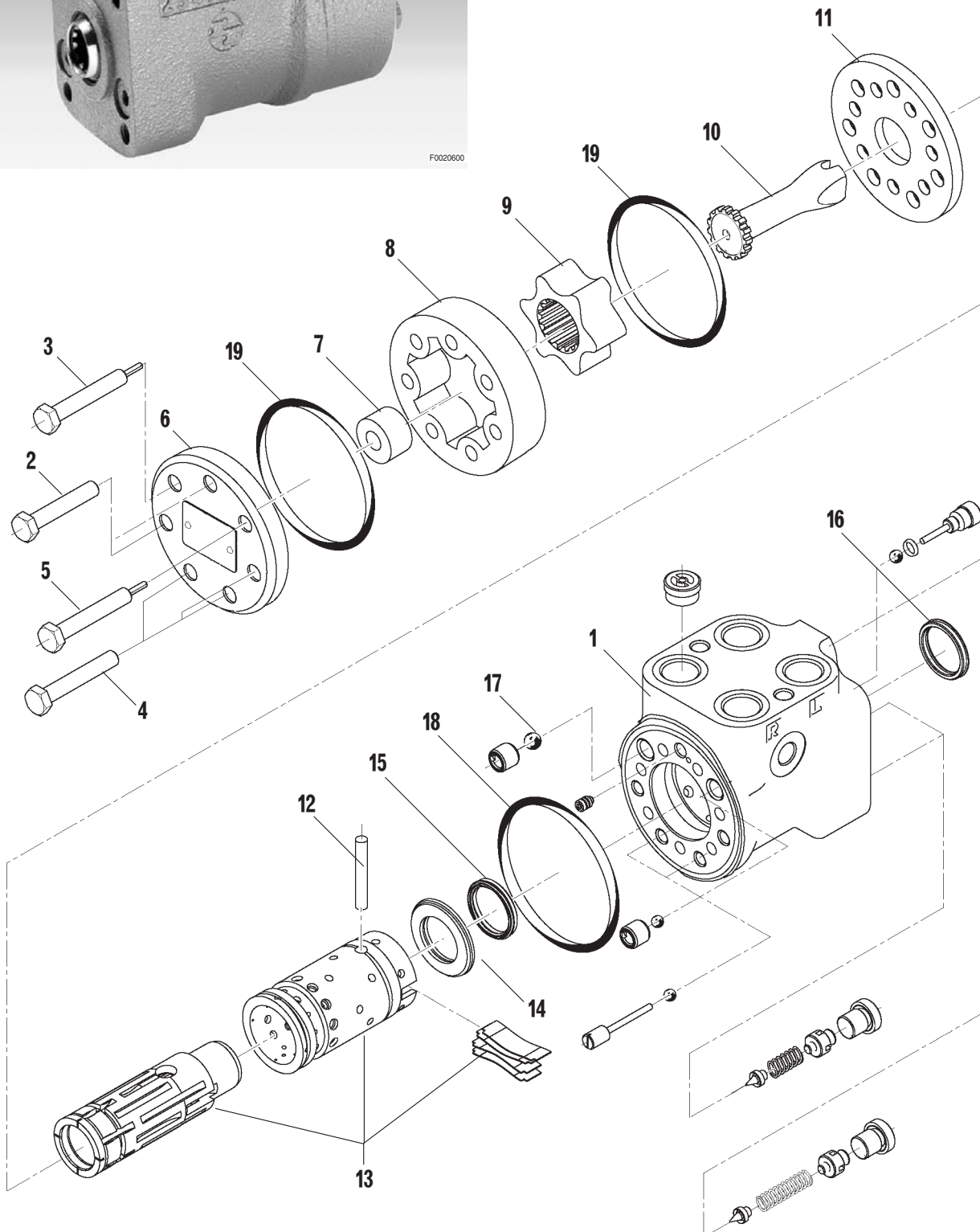
- ★ If the power steering fittings have been undone, renew the gaskets and tighten the fittings to a torque of 70 Nm (51.6 lb.ft.).

1 - Start the engine and turn the steering wheel repeatedly in both directions to eliminate any air from the power steering system.

2 - Check the fittings for leaks.



REMOVAL AND RENEWAL OF POWER STEERING UNIT SEALS



D0004350