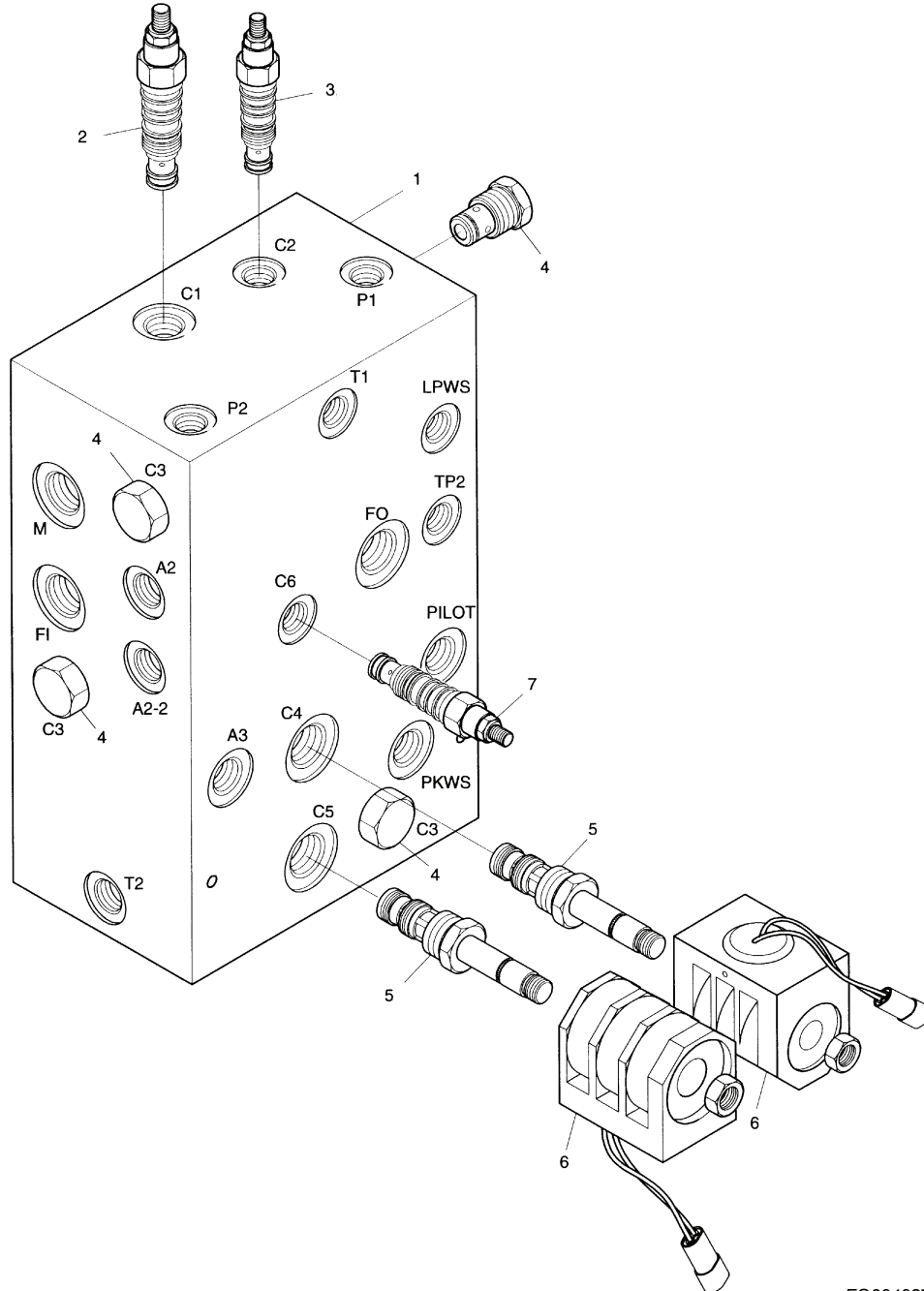


# BRAKE, PILOT AND FAN MOTOR SUPPLY VALVE

This valve controls oil flow to the brake pedal valve for braking, to the pilot controller for operation of bucket and boom, and to the fan motor.

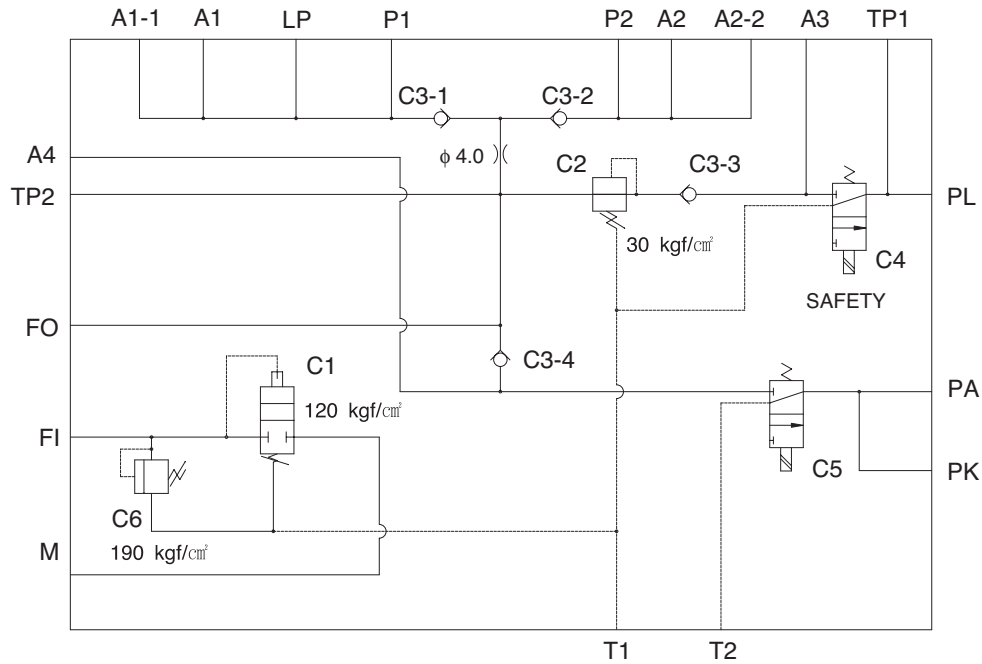


FG004087

Figure 1

Reference Number	Description
1	Body (200*120*79)
2	Sequence (C1)
3	Reducing (C2)
4	Check (C3)

Reference Number	Description
5	Solenoid (C4 and C5)
6	Coil (C4 and C5)
7	Relief Valve (C6)



FG004516

Figure 2 Hydraulic Circuit

## Specifications

Item		Specifications
Max. Operating Pressure		210.0 kg/cm <sup>2</sup> (3,000 psi)
Max. Flow		57 l/min (15 U.S. gpm)
System Pressure		120.0 kg/cm <sup>2</sup> (1,710 psi)
Setting Pressure	C1	120 ±2 kg/cm <sup>2</sup> at 53 l/min (1710 ±28 psi at 14 U.S. gpm)
	C2	30 kg/cm <sup>2</sup> at 20 l/min (427 psi at 5.3 U.S. gpm)
	C3 Cracking Pressure	2.40 kg/cm <sup>2</sup> (34.1 psi)
	C6	190.0 kg/cm <sup>2</sup> (2,700 psi)
Port Size	FO, F1, M	PF 1/2 O-ring
	TP1, TP2, T2	PF 1/4 O-ring
	LP, PK	§30 PF 1/4 BSP
	All other ports	PF 3/8 O-ring

# Parking Brake

Edition 1

---

**MEMO**

---

# Table of Contents

## Parking Brake

Safety Precautions.....	5
Applicable Models.....	5
General Description .....	6
Functional Characteristics and Maintenance Instructions	
for Spring Loaded Sliding Caliper Brakes.....	8
1. Functional Characteristics of Spring Loaded Sliding Caliper Brakes.....	8
2. Mounting and Basic Setting Regulations.....	10
3. Adjusting Regulations.....	11
4. Emergency Release of Parking Brake .....	11
5. Maintenance and Repair Work.....	12
Maintenance and Exchange of Brake Pads.....	12
Changing the Seal.....	13
6. General.....	14

---

**MEMO**

---

# SAFETY PRECAUTIONS

---



## CAUTION!

---

Follow all safety recommendations and safe shop practices outlined in the front of this manual or those contained within this section.

Always use tools and equipment that are in good working order.

Use lifting and hoisting equipment capable of safely handling load.

Remember, that ultimately safety is your own personal responsibility.

---

## APPLICABLE MODELS

The contents of this section apply to the following models and serial number ranges.

MODEL	SERIAL NUMBER RANGE
DL400	5001 and Up
DL500	5001 and Up