

MODEL CODING SYSTEM

Equipment Model Code

Equipment name	Model description	Code description
Engine	<p>4 D 3 4 - 0 A T2</p>	<p>With turbocharger Stands for automobile Remodeling sequence Version number Series number Stands for diesel engine No. of cylinders (4 : Four cylinders)</p> <p>} These are omitted in the Service Manual</p>
Clutch	<p>C 4 W 30</p>	<p>Disc outer diameter Facing material (W : Woven) Loading capacity of major type (tonnage) Stands for clutch</p>
Transmission	<p>M 035 S 5</p>	<p>No. of forward speeds Meshing (S : Synchronesh A : Automatic) Loading capacity of major type (tonnage) Stands for transmission</p>
Propeller shaft	<p>P 3</p>	<p>Loading capacity of major type (tonnage) Stands for propeller shaft</p>
Reduction and differential	<p>D 033 H</p>	<p>Teeth shape (H : hypoid gear) Loading capacity of major type (tonnage) Stands for reduction and differential</p>

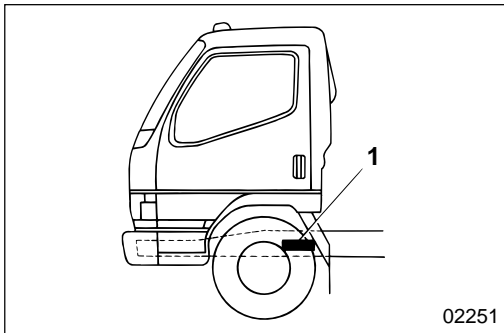
POWER TRAIN TABLE/CHASSIS NUMBER AND ENGINE NUMBER 00

POWER TRAIN TABLE

Model	Engine model	Clutch model	Transmission model	Propeller shaft	Rear axle model	Final reduction and gear ratio
FE639C, E, F G.V.W. 5260 kg {11600 lb}	4D34T3 135 HP/3000 rpm 253 lbf.ft/1800 rpm (SAE, Gross)	C4W30	M035S5 5.380/0.722	P3	R033T	D033H 5.714
		Torque converter	M030A4 3.028/0.724			
FE639C, E, F G.V.W. 6120 kg {13500 lb}	4D34T3 135 HP/3000 rpm 253 lbf.ft/1800 rpm (SAE, Gross)	C4W30	M035S5 5.380/0.722			
		Torque converter	M030A4 3.028/0.724			
FE649C, E, F G.V.W. 6580 kg {14500 lb}	4D34T3 145 HP/2900 rpm 275 lbf.ft/1600 rpm (SAE, Gross)	C4W30	M035S5 5.380/0.722			
		Torque converter	M030A4 2.784/0.694			

CHASSIS NUMBER AND ENGINE NUMBER

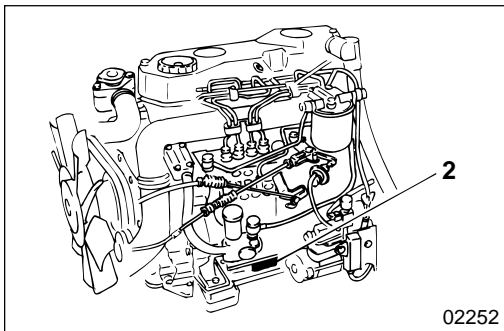
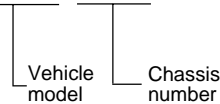
The serial numbers for chassis and engines are assigned to the respective vehicles and engines in manufacturing sequence: every vehicle and engine has its own numbers. These numbers are required for registration and incidental inspection of the vehicle. Please do not fail to mention these numbers to the dealers when ordering spare parts.



Chassis number

Chassis number 1 is punch-marked on the frame by the left-side front wheel.

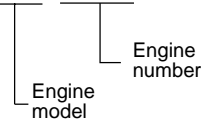
Example : FE639C-□□□□□□



Engine number

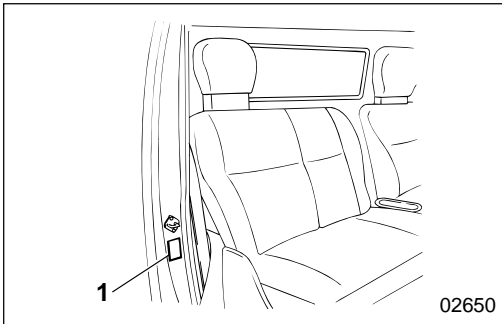
Engine number 2 is punch-marked on the left of the crankcase.

Example : 4D34-□□□□□□



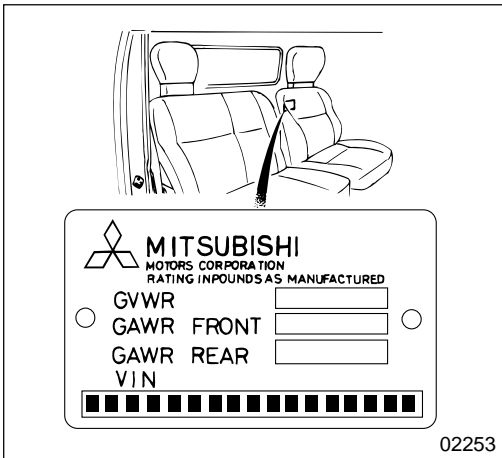
POWER TRAIN LABEL/VEHICLE IDENTIFICATION NUMBER

POWER TRAIN LABEL



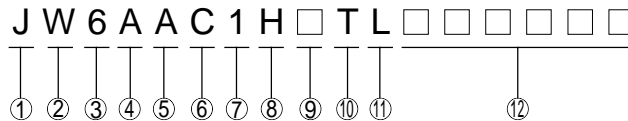
Power train label 1 located in the position illustrated indicates the vehicle model, chassis number and information relevant to the vehicle's power transmission components.

VEHICLE IDENTIFICATION NUMBER



The vehicle identification number is punch-marked on the plate, which is attached in the position as illustrated.

The vehicle identification number consists of a 17-digit set of alphanumeric characters. Each digit represents the following specifications.



- | | |
|---|---|
| <ul style="list-style-type: none"> ① Country ② Make ③ Vehicle type ④ Gross vehicle weight/Brake system ⑤ Line ⑥ Series (Wheelbase) ⑦ Cab chassis type ⑧ Engine ⑨ Check digit ⑩ Model year ⑪ Plant ⑫ Plant sequential number | <ul style="list-style-type: none"> J : Japan W : Mitsubishi Fuso 6 : Incomplete Vehicle A : 4536 to 6350 kg {10001 to 14000 lbs}/Hydraulic B : 6351 to 7258 kg {14001 to 16000 lbs}/Hydraulic A : FE639 B : FE649 C : 2.6 to 2.9 m {8.6 to 9.5 ft.} E : 3.2 to 3.5 m {10.5 to 11.5 ft.} F : 3.5 to 3.8 m {11.5 to 12.5 ft.} 1 : Chassis cab H : 238 CID Diesel turbocharged and charge air cooled T : 1996 L : Kawasaki-2 |
|---|---|