

Bushes connecting swinging arms to chassis

Suspension arms are connected to chassis forks by means of new-type Flanblock flexible bushings, with free rotation.

If, during disassembly, the bushing proves excessively worn, strained, or if it has a too high rotation torque (< 2 kgm), replace the whole bushing.

Refit the suspension arms in the static load position so that Flanblock bushings are not twisted too much under normal working conditions.

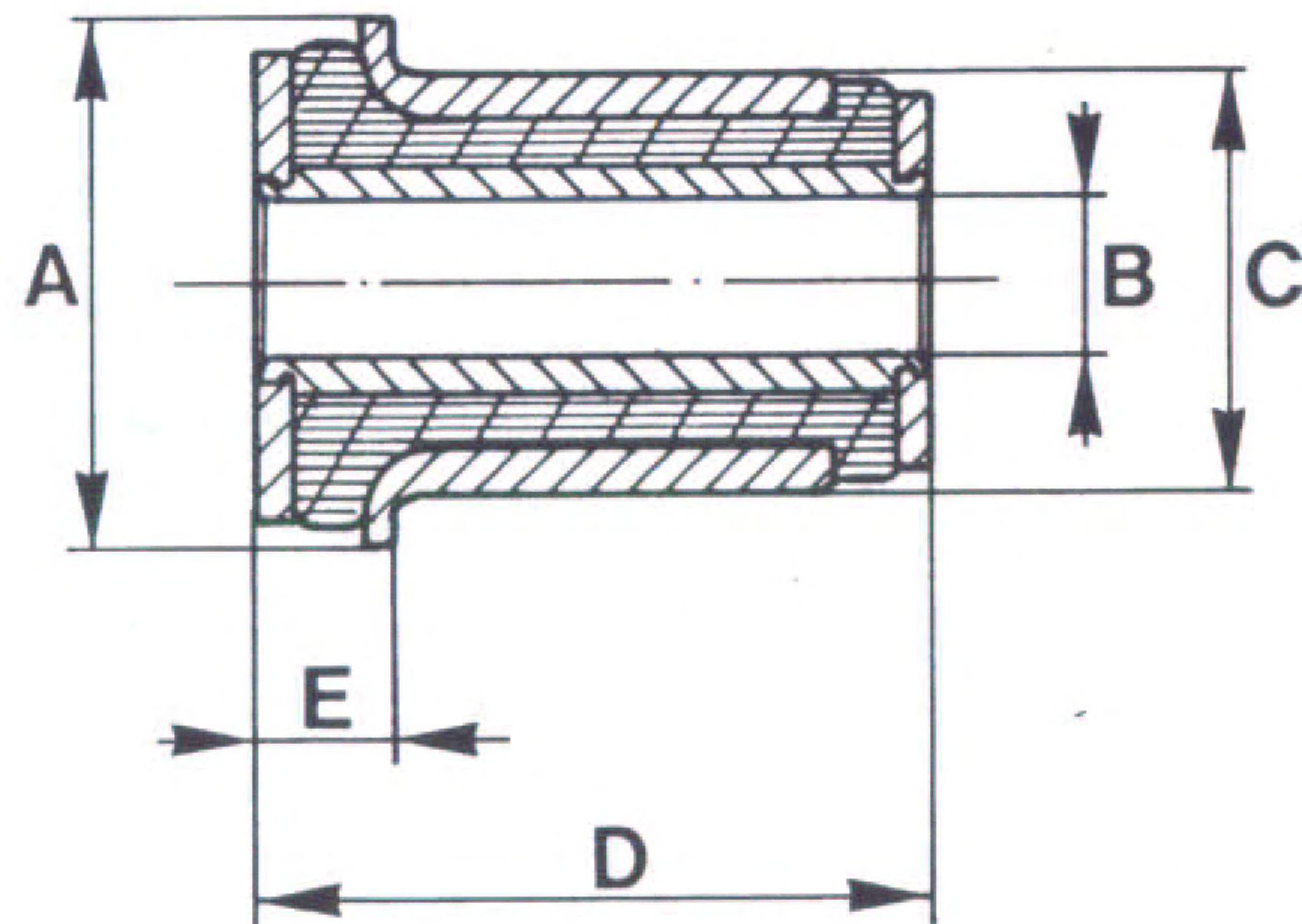


Fig. 3 - Flanblock for suspension arms.

	① Part. No. 163038	② Part. No. 161571	③ Part. No. 161572	④ Part. No. 161573
Ø A	38 ± 0,2	38 ± 0,2	43 ± 0,2	43 ± 0,2
Ø B	12,05 ÷ 12,15	12,05 ÷ 12,15	14,05 ÷ 14,15	14,05 ÷ 14,15
Ø C	29,5 ± 0,1	29,5 ± 0,1	33,5 ± 0,1	33,5 ± 0,1
D	47 ± 0,1	47 ± 0,1	49 ± 0,5	56 ± 0,1
E	9,3 ± 0,5	9,3 ± 0,5	13 ± 0,5	12,5 ± 0,5
Shore	65 ÷ 69	70 ÷ 74	70 ÷ 74	70 ÷ 74