

Fig. 148: Locating Flexplate Access Cover Retainers
Courtesy of FORD MOTOR CO.

13. Remove and discard the 6 torque converter nuts.

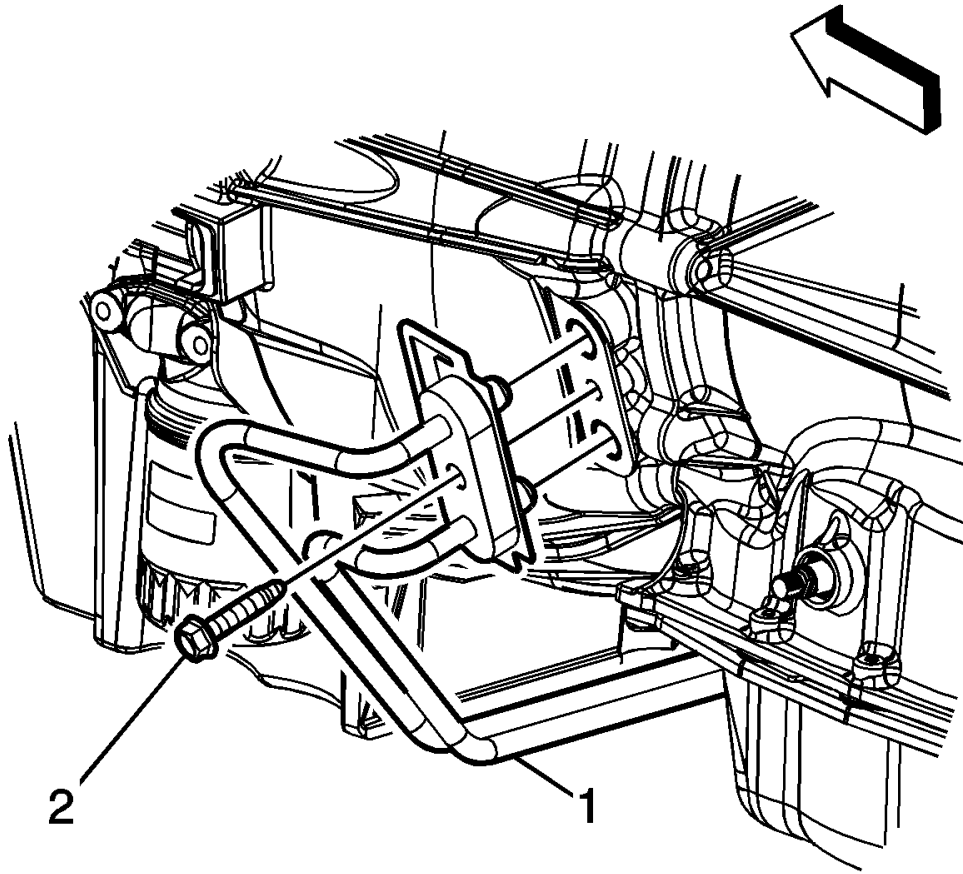


Fig. 149: Locating Torque Converter Nuts
Courtesy of FORD MOTOR CO.

14. Remove the engine wiring harness bracket bolt and the ground wire bolt.

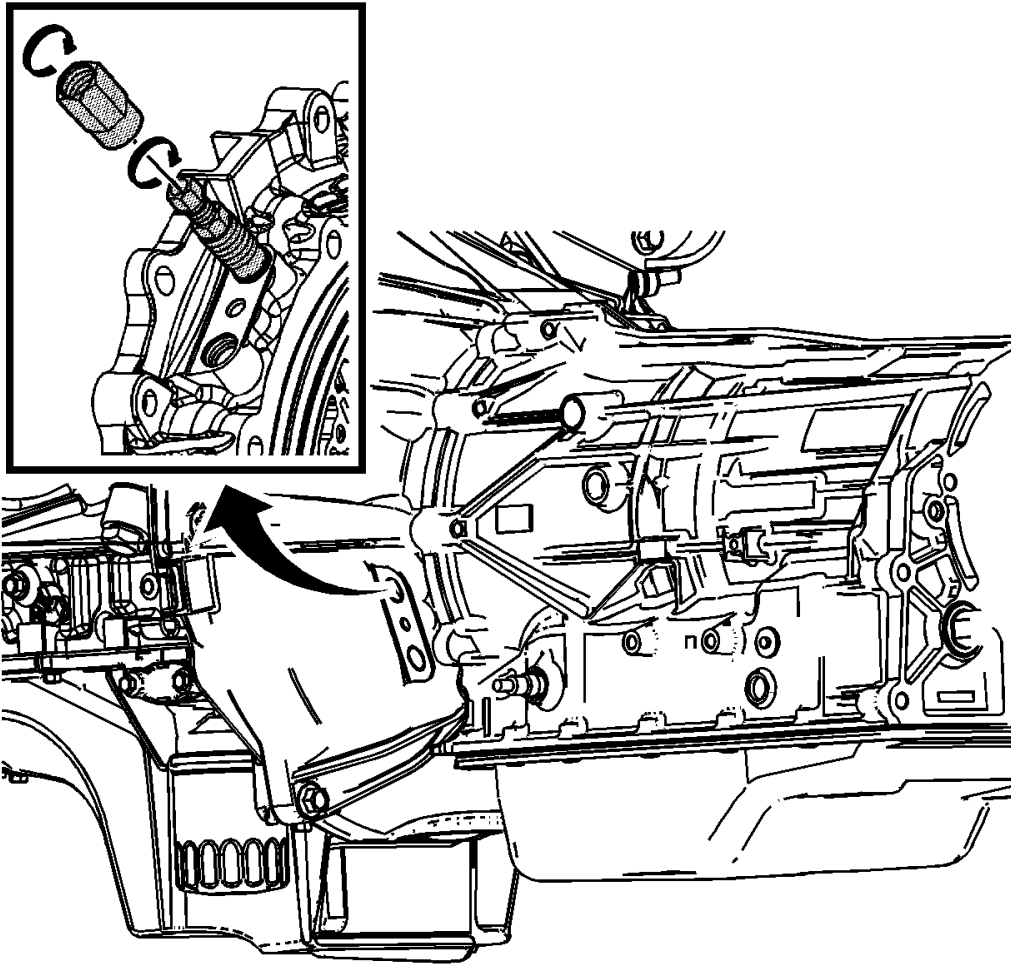


Fig. 150: Locating Engine Wiring Harness Bracket Bolt And Ground Wire Bolt
Courtesy of FORD MOTOR CO.

15. Remove the 4 nuts and the cooling fan stator.

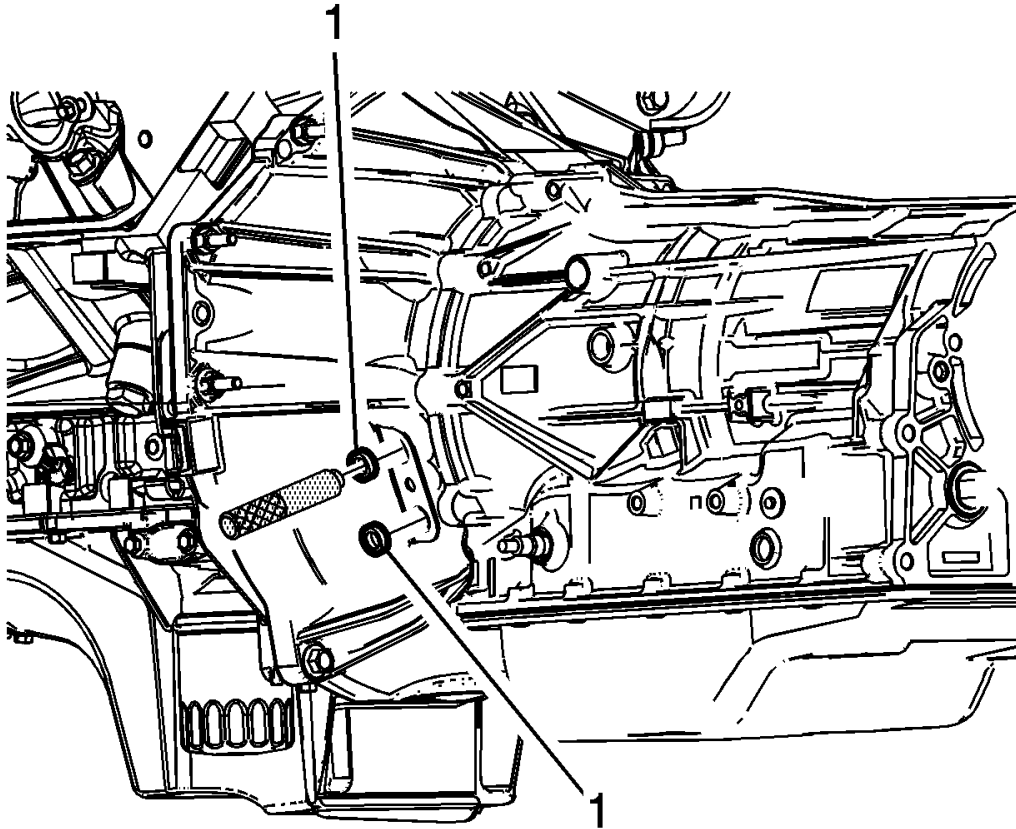


Fig. 151: Locating Cooling Fan Stator Nuts
Courtesy of FORD MOTOR CO.

16. Remove the transmission cooler line bracket nut from the RH side of the engine and position the transmission cooler lines aside.

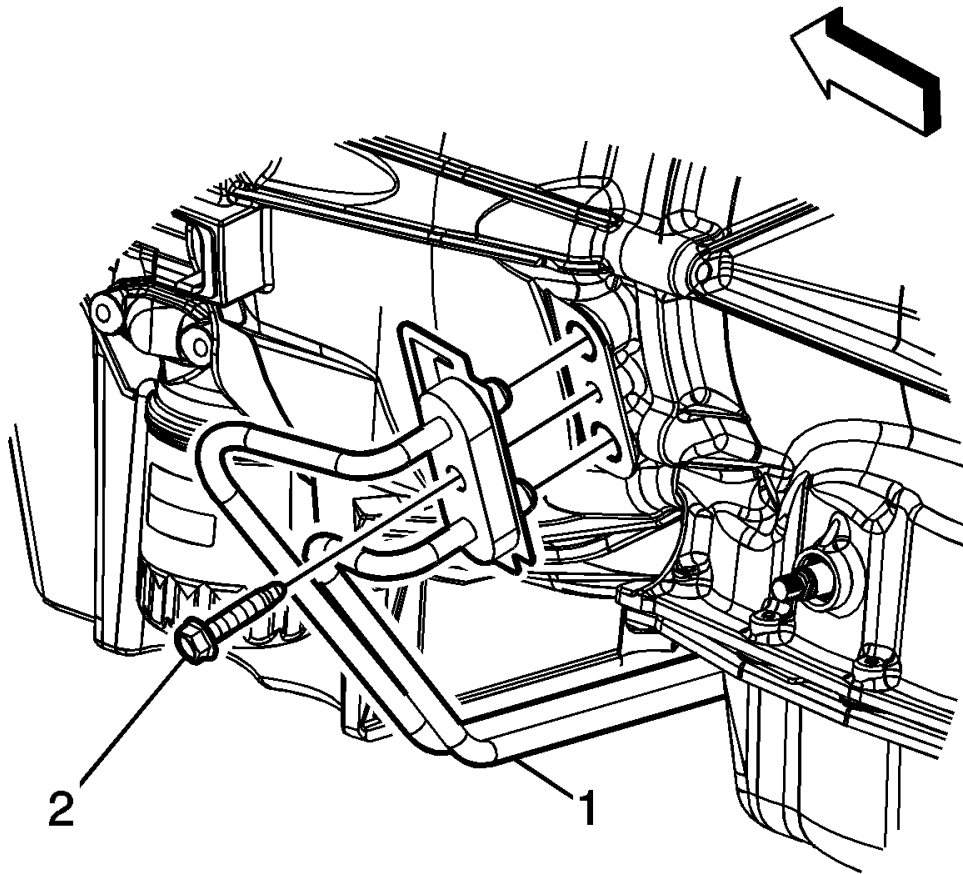


Fig. 152: Locating Transmission Cooler Tube Bracket Nut
Courtesy of FORD MOTOR CO.

NOTE: Fuel injection equipment is manufactured to very precise tolerances and fine clearances. To prevent fuel system damage, it is essential that absolute cleanliness is observed when working with these components.

17.

Disconnect the fuel supply tube quick connect coupling from the secondary fuel filter and position aside. For additional information, refer to **FUEL SYSTEM - GENERAL INFORMATION - GASOLINE AND DIESEL** .

- Disconnect the fuel return tube quick connect coupling from the fuel injection pump return tube. For additional information, refer to **FUEL SYSTEM - GENERAL INFORMATION - GASOLINE AND DIESEL** .

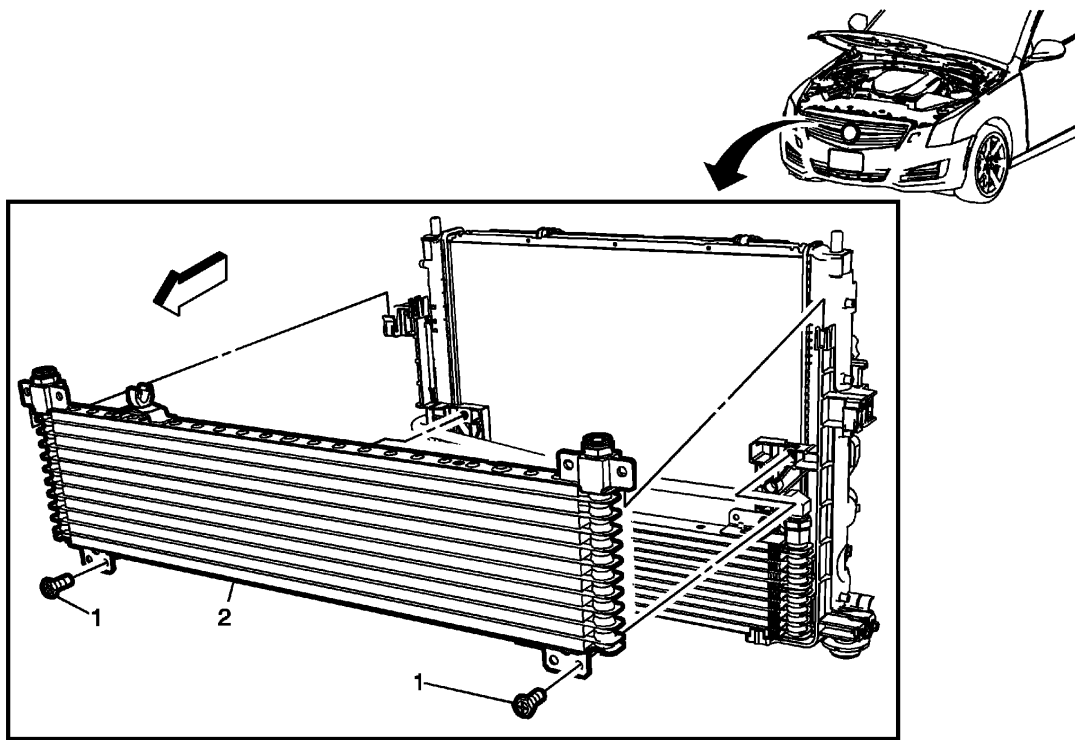


Fig. 153: Locating Fuel Return Tube Quick Connect Coupling And Fuel Injection Pump Return Tube
Courtesy of FORD MOTOR CO.

18. Remove the 2 fuel line bracket bolts from the transmission bellhousing.

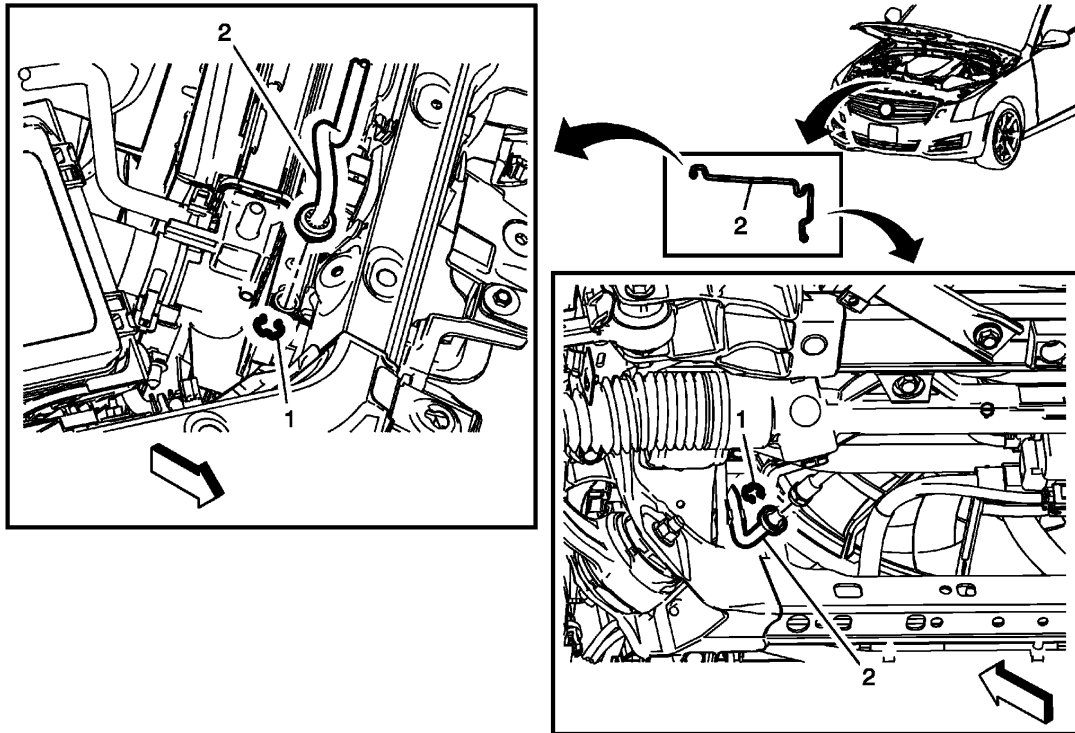


Fig. 154: Locating Fuel Line Bracket Bolts
Courtesy of FORD MOTOR CO.

19. Remove the 2 fuel line bracket bolts from the left side of the transmission and position the fuel lines aside.