

tm2313 - 655C and 755C 655C Series II and 755C Series II CrawlerLoaders Operation and Tests Fuel Injection Pump Timing—655C

Fuel Injection Pump Timing—655C

-: Specifications

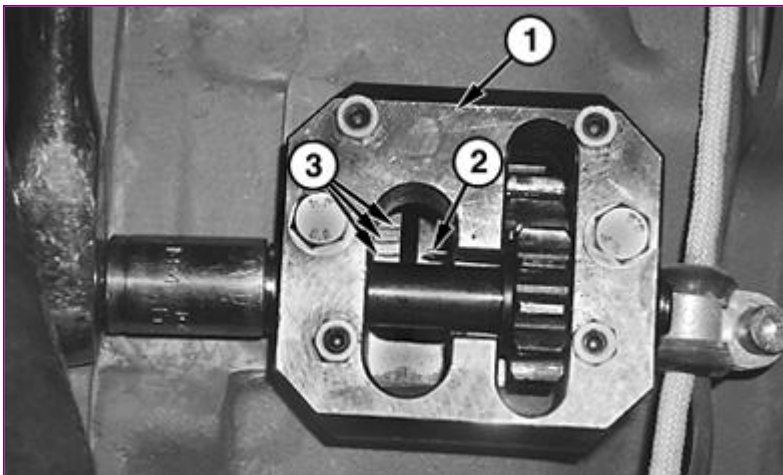
SPECIFICATIONS	
Injection Pump Drive Capscrews Adjustment Torque	30 N.m 22 lb-ft
Pump Drive Shaft Lock Screw Torque	15 N.m 11 lb-ft
Injection Pump Drive Capscrews Final Torque	110 N.m 81 lb-ft

-: Essential Tools

ESSENTIAL TOOLS
JDG0524045 Engine Turning Tool
JDG7022418 Dial Indicator
JDG7022420 Adaptor Extension

IMPORTANT:

In this procedure, the engine is rotated back 30 degrees before top dead center (TDC), is done to remove any gear lash.



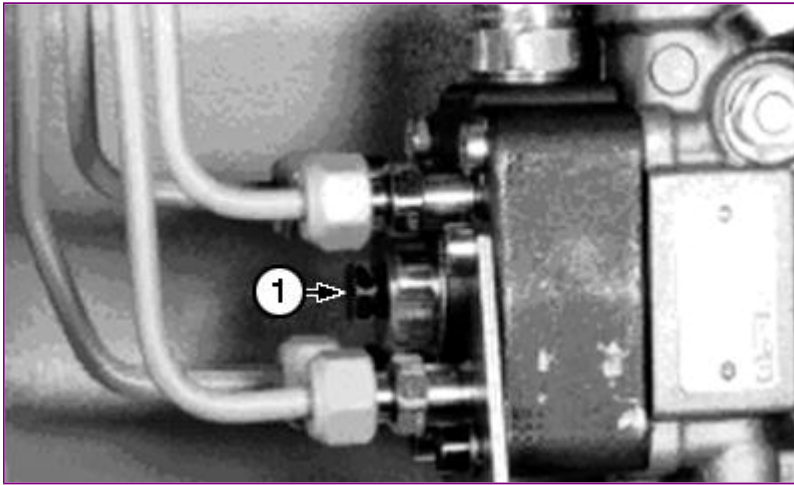
T214082A-UN: Fuel System Timing

LEGEND:

- 1 - JDG0524045 Engine Turning Tool
- 2 - Timing Pointer
- 3 - Degree Marks

Timing Check

1. Remove the cover from the flywheel housing to gain access to the timing degree marks (3) on the flywheel.
2. Insert the JDG0524045 Engine Turning Tool (1) onto the flywheel, and rotate engine until the No. 1 cylinder is top dead center (TDC) on the compression stroke. The No. 1 cylinder is the cylinder closest to the flywheel.

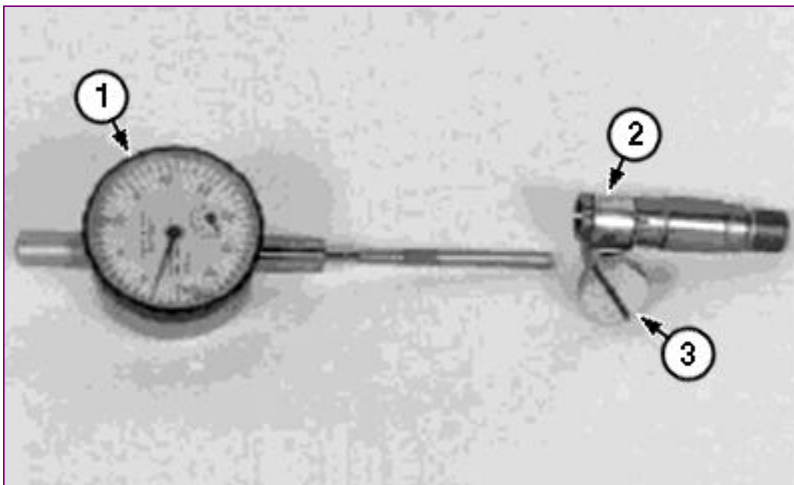


3. TX1009500A-UN: Injection Pump

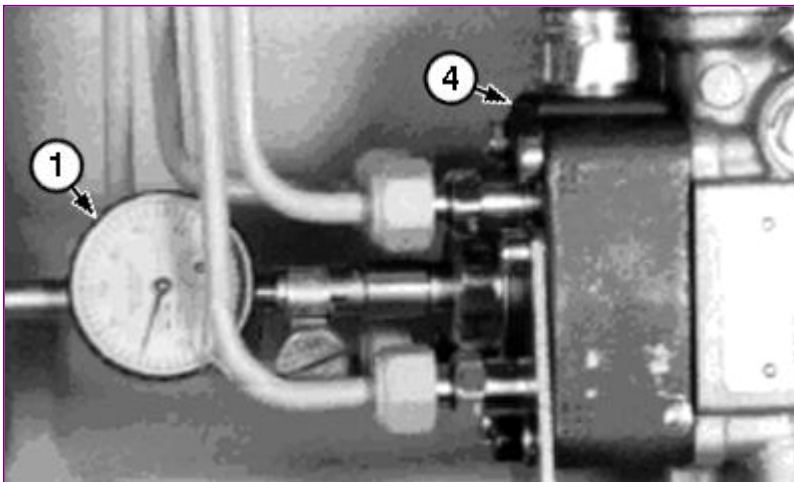
LEGEND:

1 - Access Plug

Remove the access plug (1) on the injection pump.



4. TX1009501A-UN: Dial Indicator



TX1009502A-UN: Indicator Installed

LEGEND: