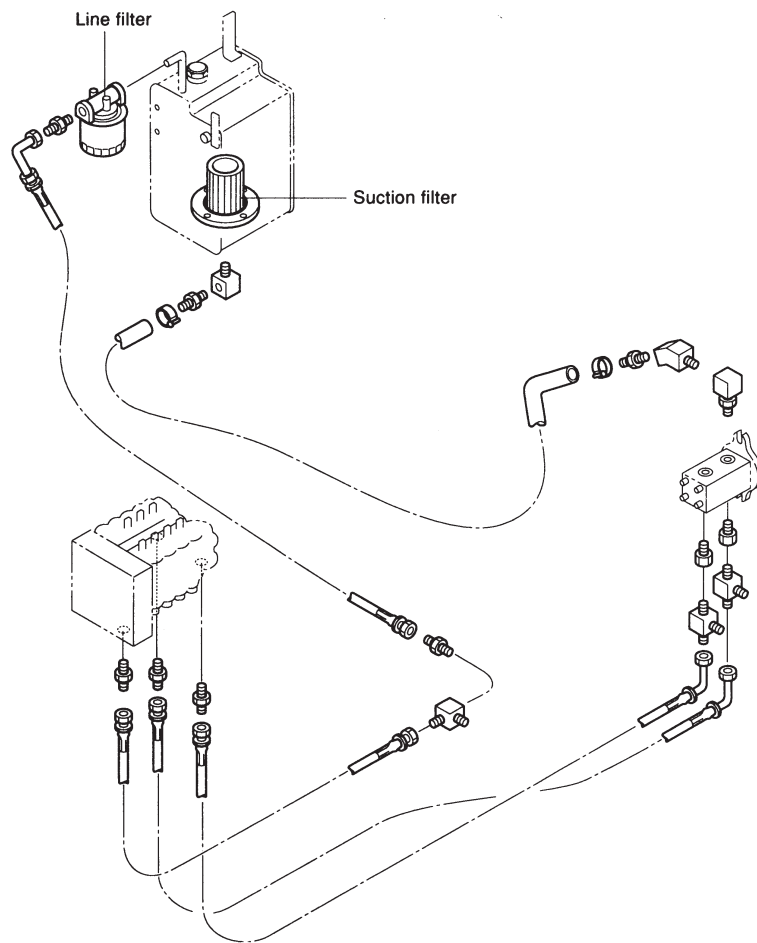
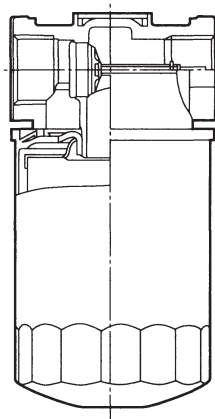


## 6-1 Installation



## 6-2 Hydraulic oil filter

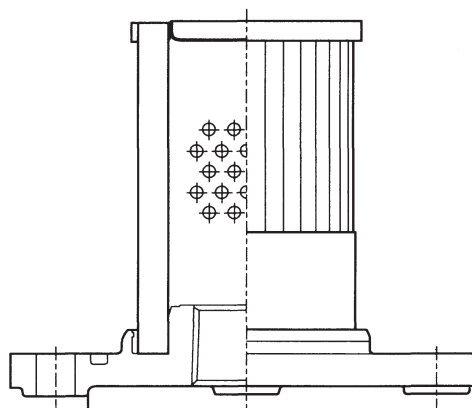
### 6-2-1 Line filter (SP08)



Filtration accuracy	10μ
Filtration capacity	15r(3.30 gal, 3.96 U.S. gal, 915 in³)
Opening pressure of bypass valve	1.5 MPa (21.3 psi)
Proof pressure	71.4 MPa(99.6 psi)
Oil temperature	-10°C~120°C

2-PT1  
Tightening torque  
19.6Nm(2kgf/m)

### 6-2-2 Suction filter



Grain size	100 mesh
Oil temperature	-25°C~100°C